



— SCHEMATIC DRAWINGS —

装配示意图

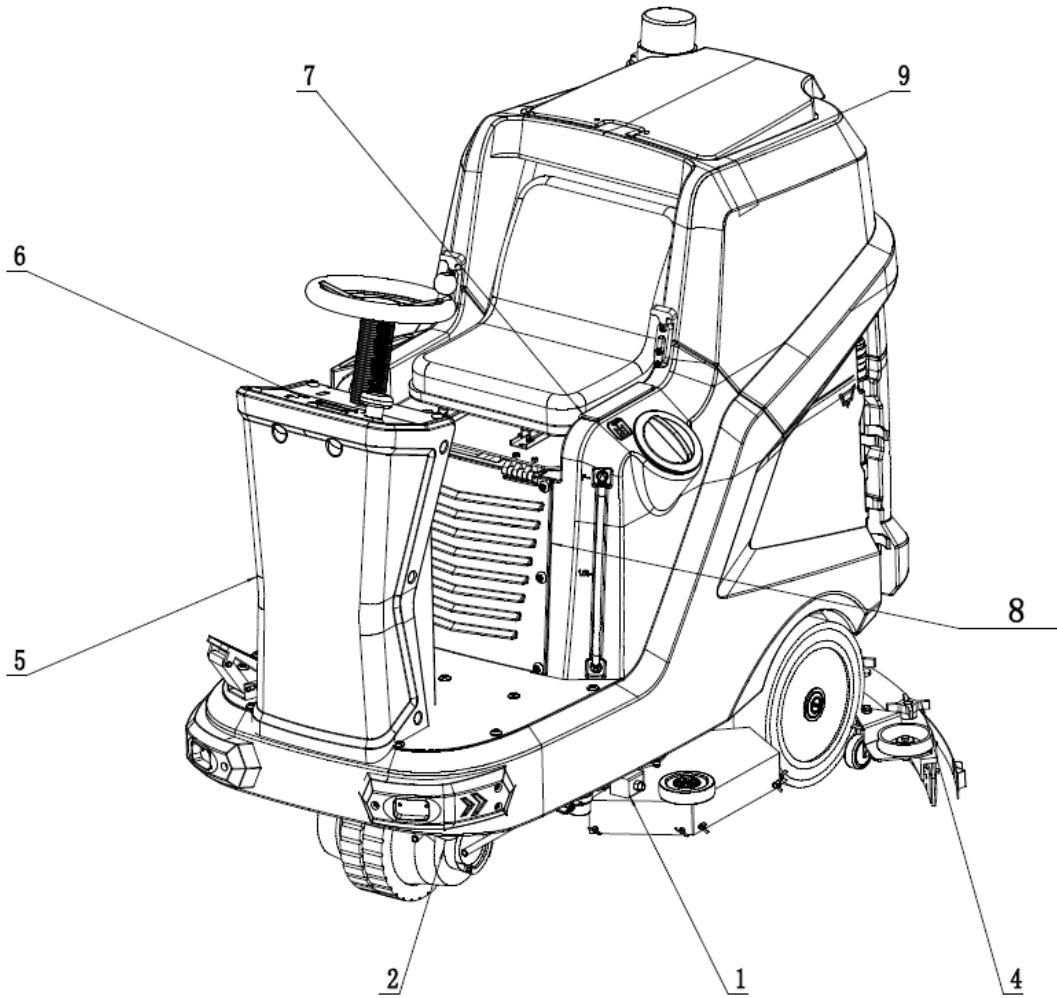


驾驶式洗地机 T130

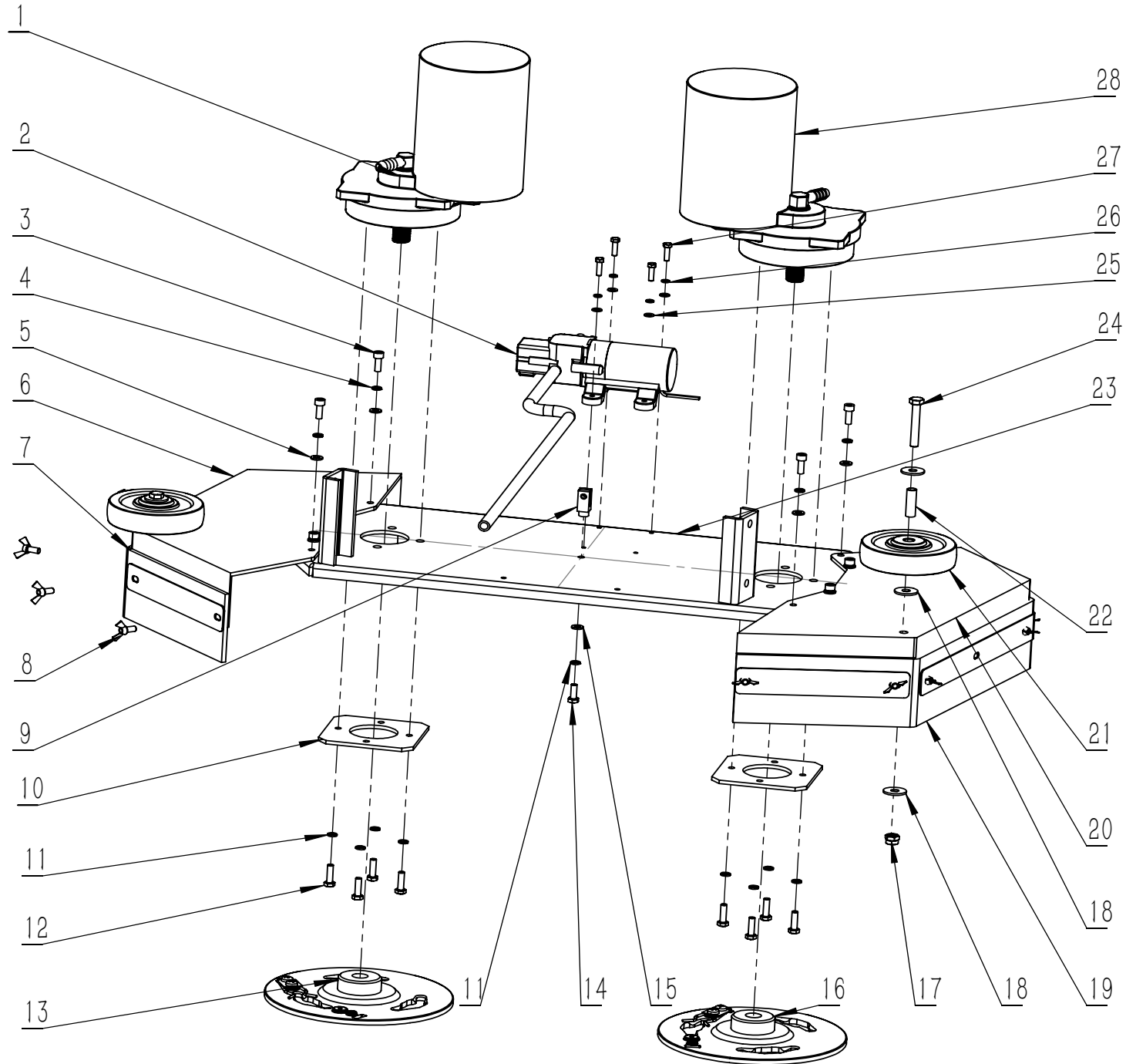
Scrubber Dryer T130



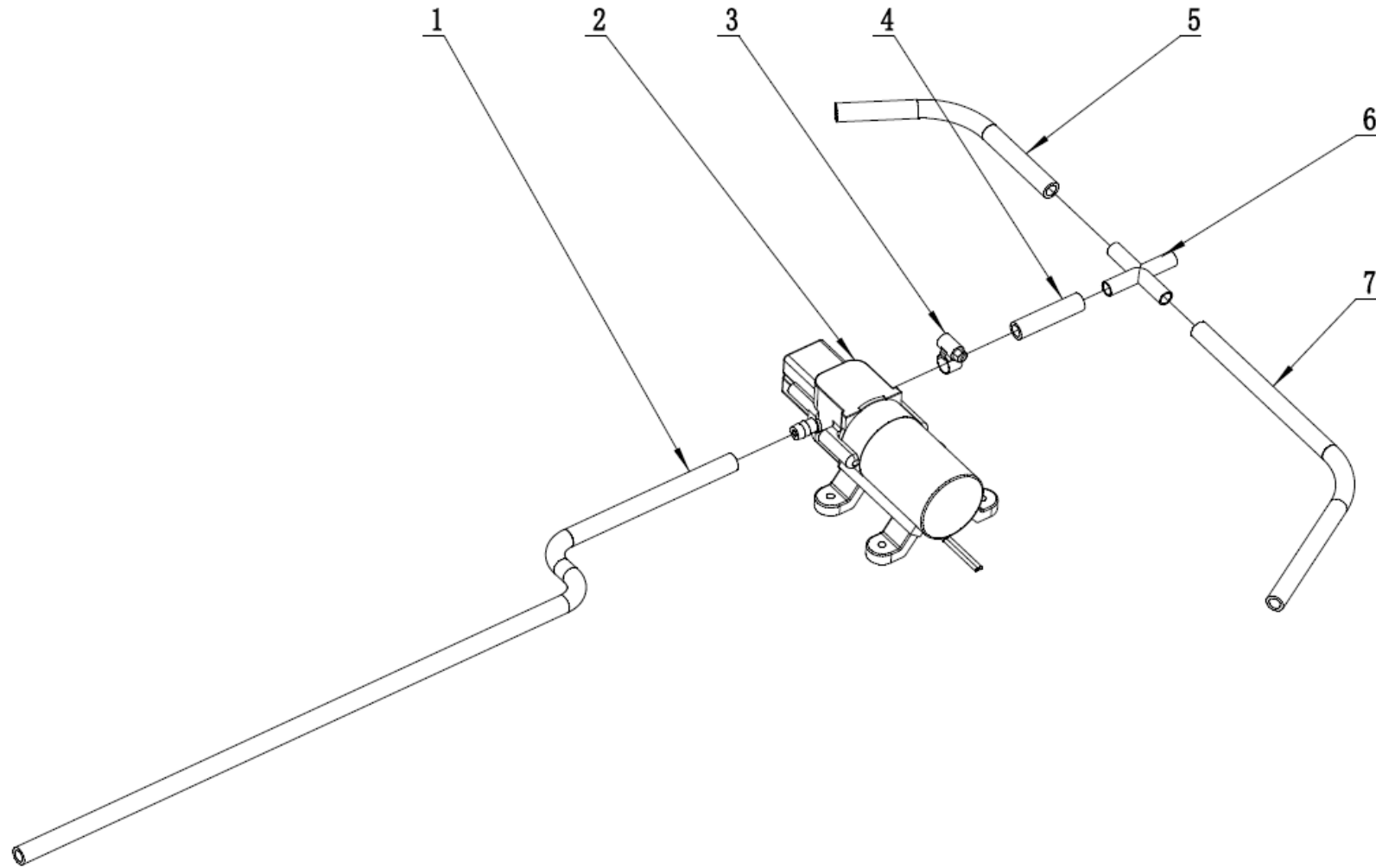
目 录



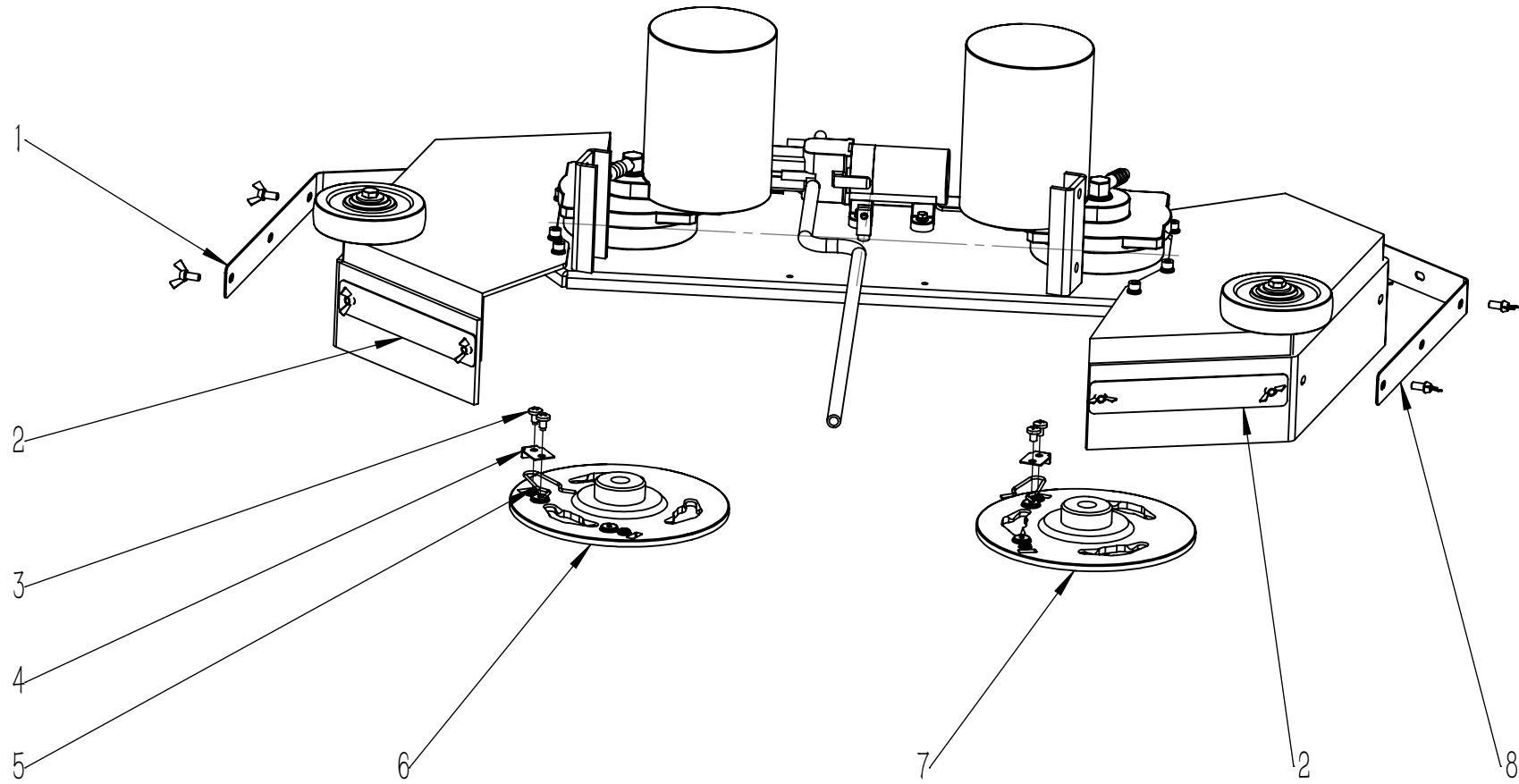
1. 机头组件	1—6
NOSE ASSEMBLY	
2. 底座架组件	7—20
FRAME ASSEMBLY	
3. 扒头支架组件	21—22
SQUEEGEE CONTROL ASSEMBLY	
4. 扒头组件	23—24
SQUEEGEE ASSEMBLY	
5. 转向组件	25—28
DIVERSION ASSEMBLY	
6. 控制面板组件	29—30
CONTROL PANEL ASSEMBLY	
7. 水箱体组件	31—38
WATER TANK ASSEMBLY	
8. 电器组件	39—40
CONTROLLER ASSEMBLY	
9. 污水箱组件	41—44
RECOVERY TANK ASSEMBLY	
10. 附件	45—47
ACCESSORIES	



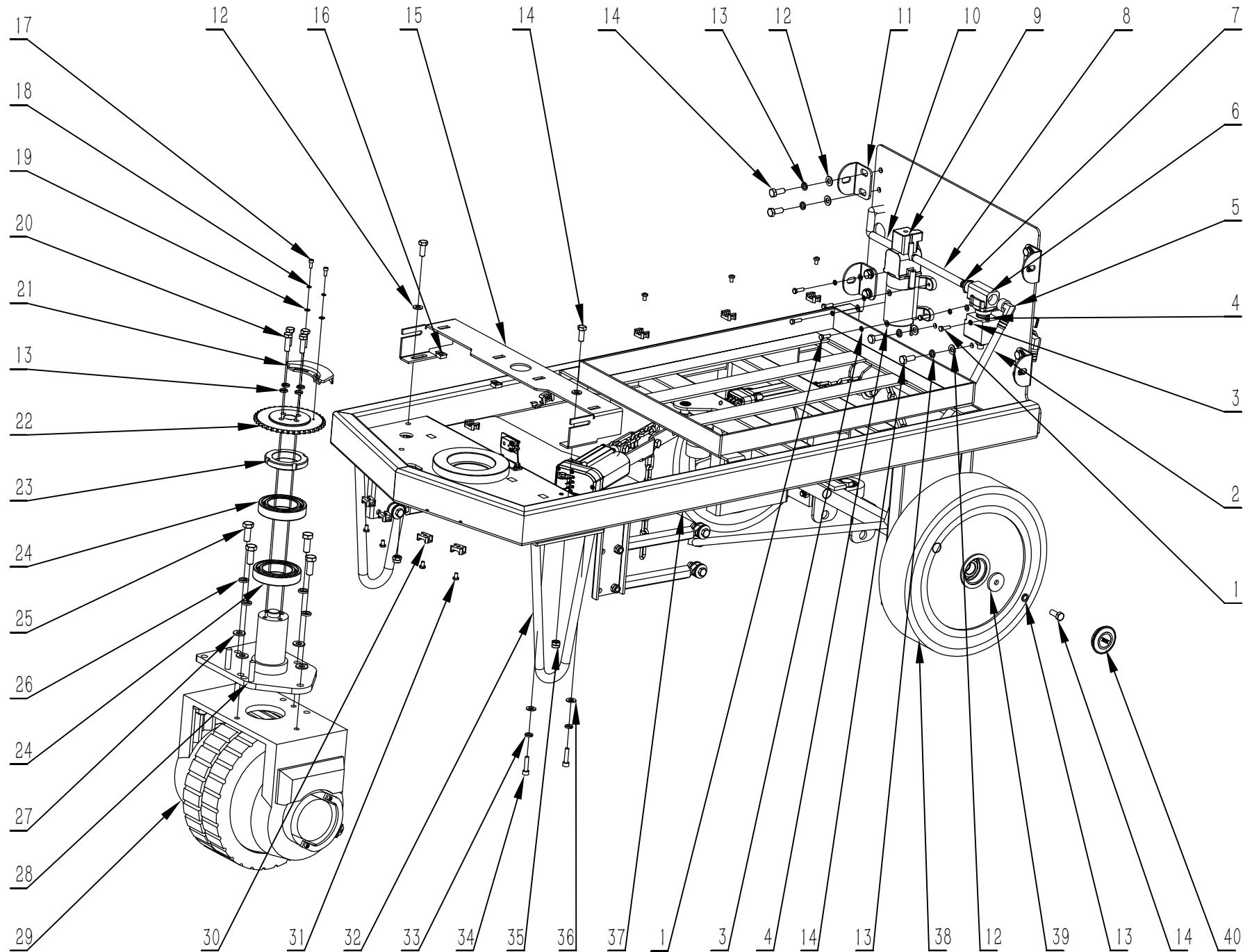
项目号 ITEM	零件号 P/N	名称 NAME	数量 QTY	英文名称 DESCRIPTION
1	W020265	右刷盘电机 24V 400W	1	RIGHT MOTOR 24V 400W
2	W020084	水路组件 T130	1	WATER ASSEMBLY T130
3	N010222	内六角圆柱头 M6×16 不锈钢	7	SCREW M6x16 A2
4	N040011	弹垫 M6 不锈钢	7	LOCK WASHER M6 A2
5	N030024	平垫 6×12×1.6 不锈钢	7	WASHER 6x12x1.6 A2
6	A040075	机头外罩右	1	HEAD COVER RIGHT T130
7	C030058	刷盘防溅条右	1	RUBBER SKIRT RIGHT
8	N010183	翼型螺栓-M6x16-黄色	13	BUTTERFLY PLASTIC HEAD M6x16 YELLOW
9	N060006	夹片式 Y型接头 Y-16	1	Y-CONNECTOR Y-16
10	A040065	电机固定板	2	MOTOR PLATE
11	N040001	弹垫 M6 镀锌	9	LOCK WASHER M6 ZINC
12	N010006	外六角 M6X20 镀锌	8	SCREW M6x20 ZINC
13	W020077	刷盘锁紧器组件-左	1	LOCKER ASSEMBLY-LEFT
14	N010005	外六角 M6x16 镀锌	1	SCREW M6x16 ZINC
15	N030007	平垫 6×12×1.6 镀锌	1	WASHER 6x12x1.6 ZINC
16	W020078	刷盘锁紧器组件-右	1	LOCKER ASSEMBLY-RIGHT
17	N020024	自锁螺母 M8 不锈钢	2	LOCK NUT M8 A2
18	N030028	平垫 8x24x2 不锈钢	6	WASHER 8x24x2 A2
19	C030057	刷盘防溅条左	1	RUBBER SKIRT LEFE
20	A040074	机头左护罩 T120	1	HEAD COVER LEFT T130
21	N110019	防撞轮Φ100x29.5	2	WHEEL Φ100x29.5
22	B020027	防撞轮铜套 8x10x31	2	BUSHING 8x10x31
23	A040073	电机座	1	MOTOR SUPPORT T130
24	N010144	外六角 M8×50 不锈钢	2	SCREW M8x50 A2
25	N030016	平垫 5x10x1 不锈钢	4	WASHER 5x10x1 A2
26	N040023	弹垫 M5 不锈钢	4	LOCK WASHER M5 A2
27	N010029	外六角 M5x16 不锈钢	4	SCREW M5x16 A2
28	W020266	左刷盘电机 24V 400W	1	LEFT MOTOR 24V 400W



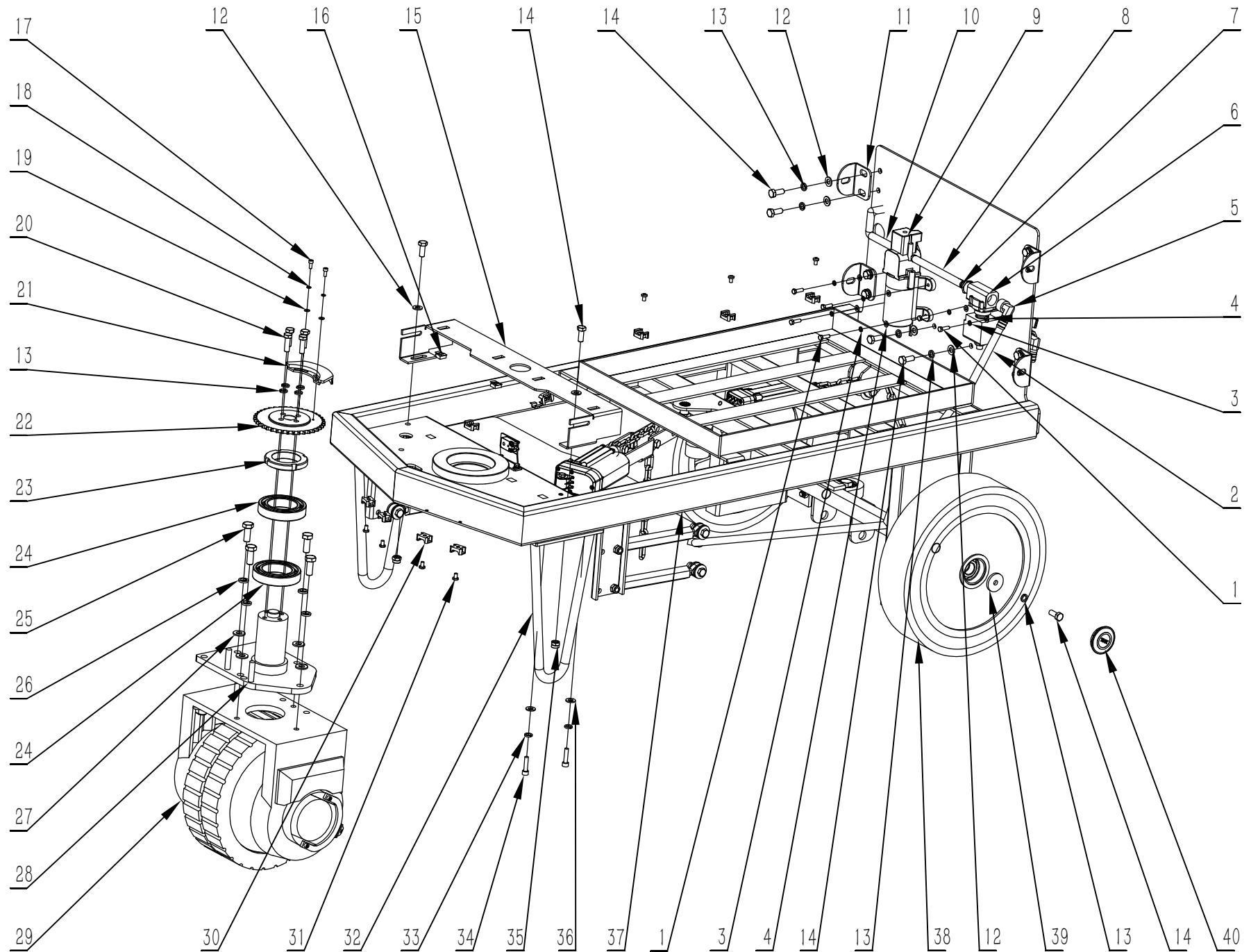
项目号 ITEM	零件号 P/N	名称 NAME	数量 QTY	英文名称 DESCRIPTION
1	F050088.9	水管 D=12 d=8 L=600	1	WATER PIPE D=12 d=8 L=600
2	W020272	微型水泵 24V	1	MICRO WATER PUMP 24V
3	F050007	卡箍 ϕ 8-12	1	SCREW CLAMP ϕ 8-12
4	F050099.8	水管 D=12 d=8 L=50	1	WATER PIPE D=12 d=8 L=50
5	F050088.10	水管-D=12-d=8-L=250	1	WATER PIPE D=12 d=8 L=250
6	F030062	四通铜接头 D=10 d=8	1	FOUR WAY COPPER JOINT D=10 d=8
7	F050088.6	水管 D=12 d=8 L=310	1	WATER PIPE D=12 d=8 L=310



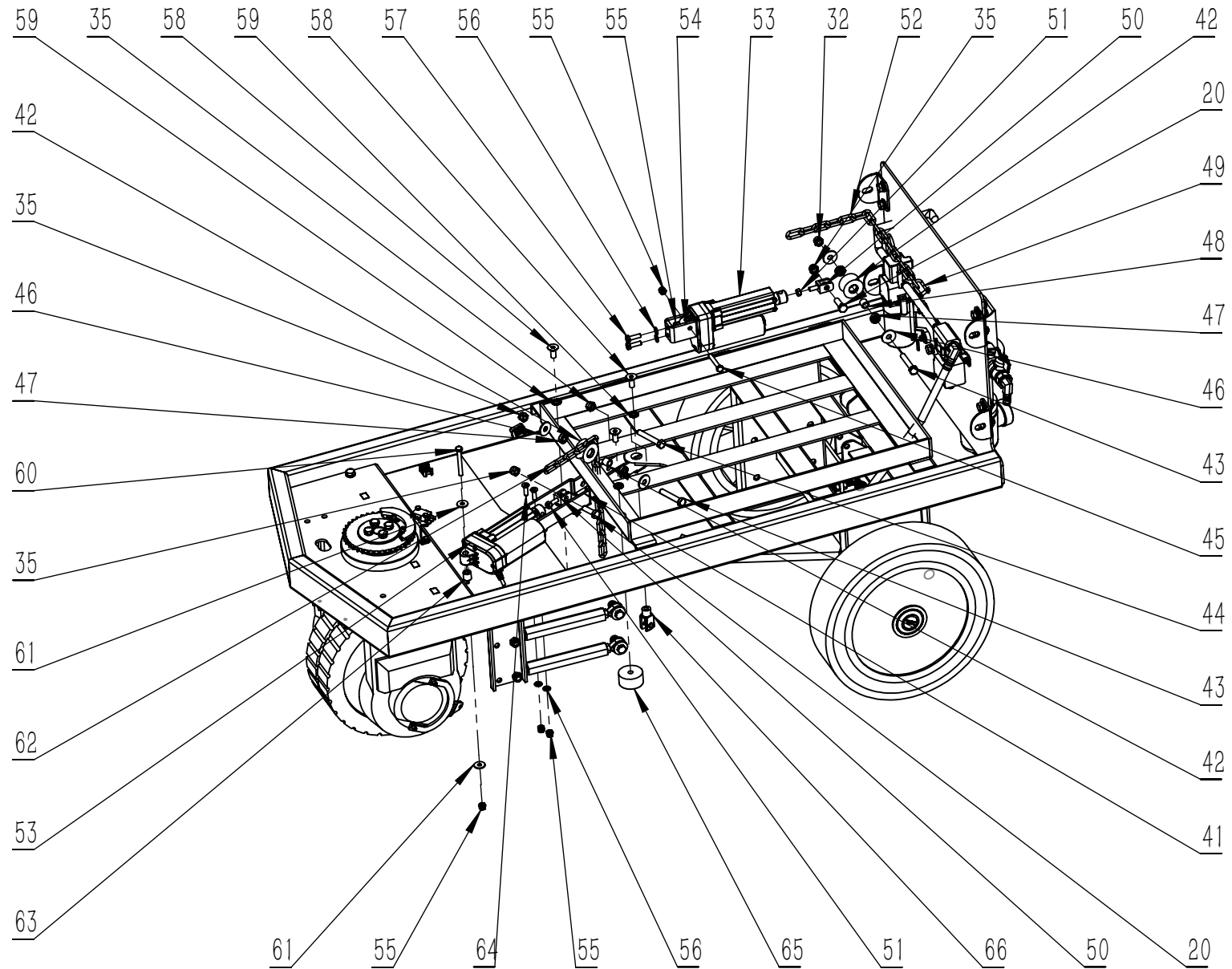
项目号 ITEM	零件号 P/N	名称 NAME	数量 QTY	英文名称 DESCRIPTION
1	A040081	机头压条 右	1	RIGHT-SIDE PRESS STRIP OF NOSE
2	A040092	机头前压条 T130	2	HEAD BEAD T130
3	N010179	十字盘头 M5*8 不锈钢	4	SCREW M5x8 A2
4	A040060	弹簧锁紧板	2	SPRING LOCKING PLATE
5	B060122	刷盘锁紧器弹簧Φ2	2	LOCKING SPRING Φ2
6	D010024	刷盘锁紧器-左	1	BRUSH PLATE-LEFT
7	D010025	刷盘锁紧器-右	1	BRUSH PLATE-RIGHT
8	A040082	机头压条 左	1	LEFT-SIDE PRESS STRIP OF NOSE



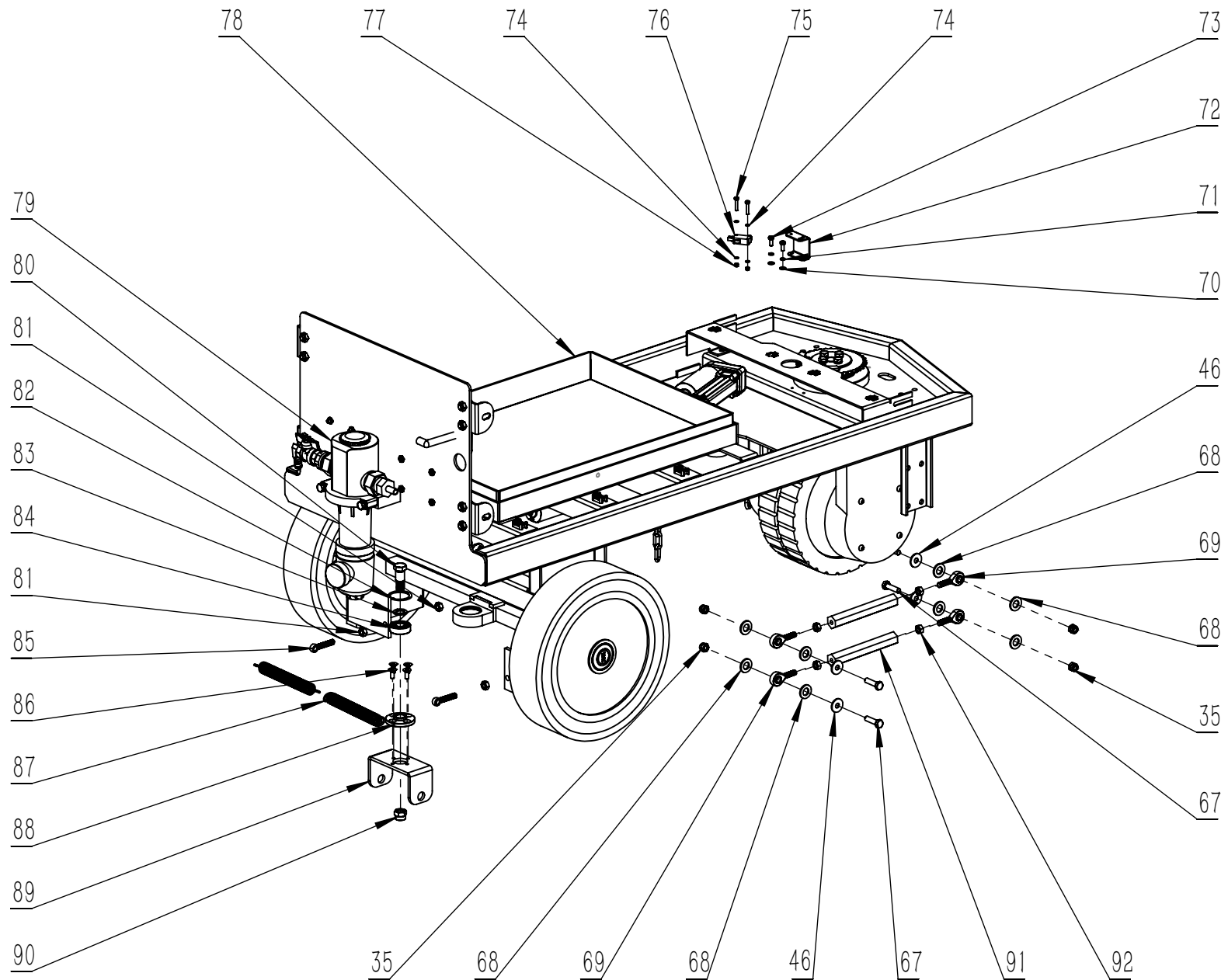
项目号 ITEM	零件号 P/N	名称	数量 QTY	DESCRIPTION
1	N010029	外六角-M5x16-不锈钢	6	SCREW M5x16 A2
2	F050065.2	硅胶水管 D=14 d=9 L=710	1	SILICONE HOSE D=14 d=9 L=710
3	N040023	弹垫 -5-不锈钢	6	LOCK WASHER M5
4	N030016	平垫-5×10×1-不锈钢	6	WASHER 5x10x1
5	F020004	快速弯头 1/2	1	CONNECTOR BEND 1/2
6	W020256	电磁阀组件 T55-70BT	1	SOLENOID VALVE ASSEMBLY T55/70BT
7	F020002	快速接头 1/2	1	CONNECTOR 1/2
8	F050065.3	硅胶水管 D=14 d=9 L=165	1	SILICONE HOSE D=14 d=9 L=165
9	W020272	微型水泵 24V	1	MICRO WATER PUMP 24V
10	F050088.11	硅胶水管 D=12 d=8 L=300	1	SILICONE HOSE D=12 d=8 L=300
11	A060031	清水箱固定座	4	SOLUTION TANK FIXED SEAT
12	N030016	平垫-8x16x1.6-镀锌	12	WASHER 8x16x1.6 ZINC
13	N040023	弹垫-M8-镀锌	16	LOCK WASHER M8 ZINC
14	N010034	外六角-M8x20-镀锌	14	SCREW M8x20 ZINC
15	A020035	脚踏板支架 T130	1	SUPPORT
16	N020015	悬挂方螺母-M5-镀锌	4	NUT M5 ZINC
17	N010199	内六角圆柱螺丝-HM4x10-不锈钢	2	SCREW HM4x10 A2
18	N040019	弹垫-M4-不锈钢	2	LOCK WASHER M4
19	N030053	平垫-4x9x1-不锈钢	2	WAHSE 4x9x1 A2
20	N010007	外六角-M8x25-镀锌	6	SCREW M8x25 ZINC
21	B050061A	链轮开关 T130	1	CAM T130
22	B060149	转向大齿轮 T130	1	PINION T130
23	N020059	四槽螺母 M50x1.5	1	NUT M50x1.5
24	N070006	轴承 6010	2	BEARING 6010
25	N010060	外六角-M10x25-镀锌	4	SCREW M10x25 ZINC
26	N040003	弹垫-M10-镀锌	4	LOCK WASHER M10 ZINC
27	N030004	平垫-10x20x2-镀锌	4	WAHSER 10x20x2 ZINC
28	B060150	电机定位轴 T130	1	MOTOR POSITIONING SHAFT T130
29	W020276	驱动电机 AMER-24V 760W-130	1	DRIVE MOTOR AMER 24V 760W 130



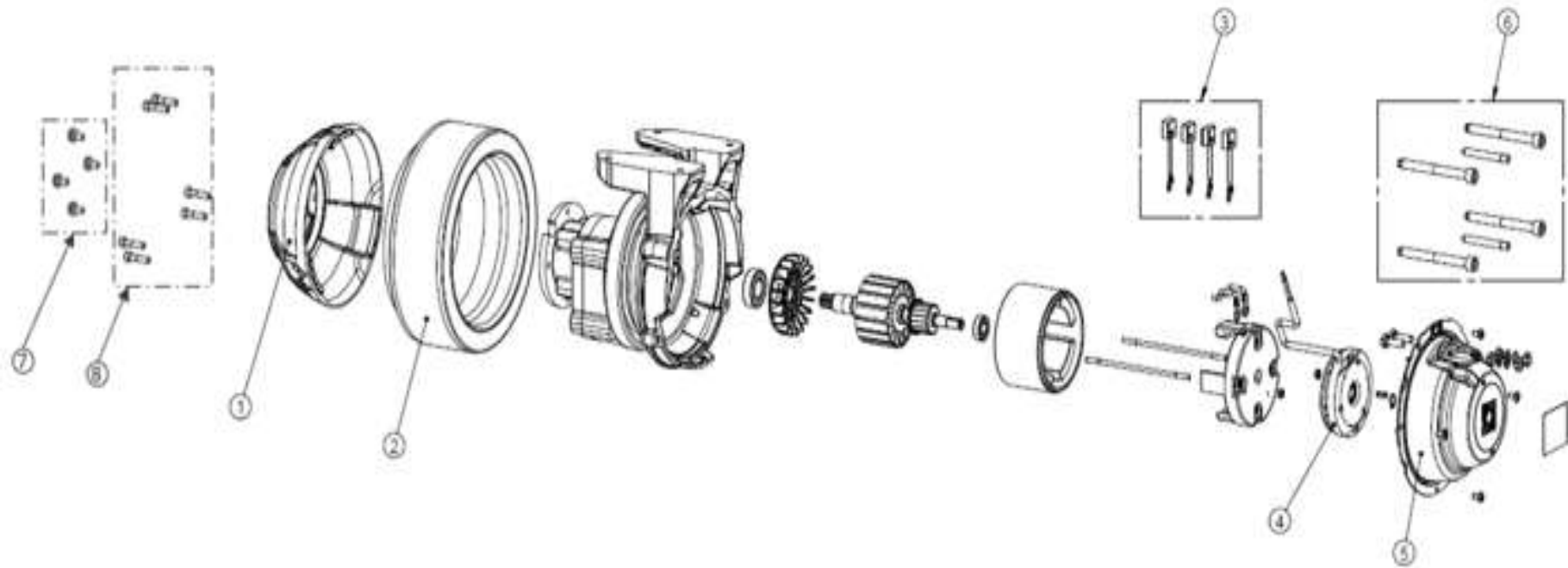
项目号 ITEM	零件号 P/N	名称	数量 QTY	DESCRIPTION
30	N090002	轧带固定座 23x16	10	SUPPORT 23x1
31	N010112	十字盘头-M5x16-不锈钢	10	SCREW M5x16 A2
32	A260026	防侧翻支架 T130	2	ANTI-ROLLOVER BRACKET T130
33	N040017	弹垫-M8-不锈钢	4	LOCK WASHER M8 A2
34	N010283	内六角圆柱头 M8×25 不锈钢	4	SCREW M6x20 A2
35	N020001	自锁螺母-M8-镀锌	15	LOCK NUT M8 ZINC
36	N030010	平垫 8×16×1.6 不锈钢	4	WASHER 8x16x1.6 A2
37	A030087	底座架 T130	1	BASE FRAM T130
38	C020030A	轮子 D300x70-YL	2	WHEEL D300x70-YL
39	B060069	平垫-8.5x30x4-镀锌	2	WASHER 8.5x30x4 ZINC
40	C020458	脚轮盖 D52-YL	2	COVER D52-YL



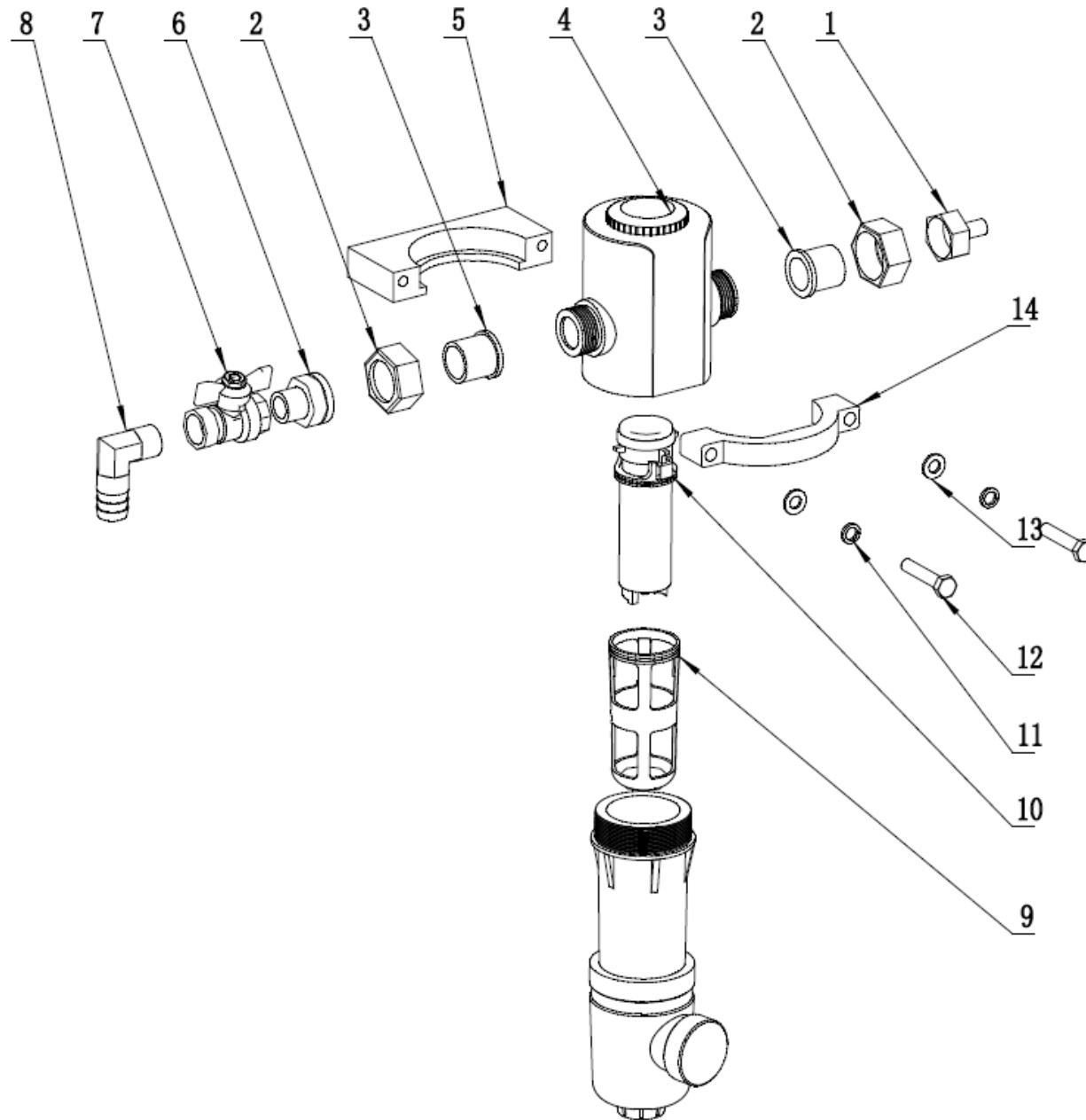
项目号 ITEM	零件号 P/N	名称	数量 QTY	DESCRIPTION
41	A030089	推杆电机导轨 T130	1	PUSH ROD MOTOR GUIDE T130
42	B050010	滑轮 D35x20	2	ROLLER D35x20
43	N010003	外六角-M8x45-镀锌	2	SCREW M8x45 ZINC
44	N010010	外六角-M8x50-镀锌	1	SCREW M8x50 ZINC
45	N010205	外六角-M6x40-镀锌	1	SCREW M6x40 ZINC
46	N030027	平垫-8x24x2-镀锌	12	WASHER 8x24x2 ZINC
47	N070003	小轴承 688ZZ	4	BEARING 688 ZZ
48	B020019	铜套 8x12x11	2	BUSHING 8x12x11
49	N060009	U型销 M5	2	SPLIT PIN M5
50	B060151	转拉线支架	2	STAY WIRE BRACKET
51	N020022	螺母-M6-镀锌	2	NUT M6 ZINC
52	N100015	链条 263	1	CHAIN 263
53	W020277	推杆电机 行程 60mm	2	MOTOR STROKE 60mm
54	A030079	推杆电机安装支架	1	PUSH ROD MOTOR MOUNTING BRACKET
55	N020012	自锁螺母-M6-镀锌	6	LOCK NUT M6 ZINC
56	N030007	平垫-6x12x1.6-镀锌	4	WASHER 6x12x1.6 ZINC
57	N010006	外六角-M6x20-镀锌	2	SCREW M6x20 ZINC
58	N010019	沉头内六角-M8x18-镀锌	3	SCREW M8x18 ZINC
59	N040012	锁紧垫片-M8x13-镀锌	3	LOCK WASHER M8x13 ZINC
60	N010021	外六角-M6x50-镀锌-全牙	1	SCREW M6x50 ZINC
61	N030008	平垫-6x18x1.6-镀锌	2	WASHER 6x18x1.6 ZINC
62	N100016	链条 255	1	CHAIN 255
63	B020034	机头推杆垫块	1	HEAD PUSHER PAD
64	N010206	沉头内六角-M6x20-镀锌	2	SCREW M6x20 ZINC
65	C020082	橡胶减震垫 T130	2	RUBBER SHOCK PAD T130
66	N060003	螺纹支架 M8x18	1	FORK M8x18



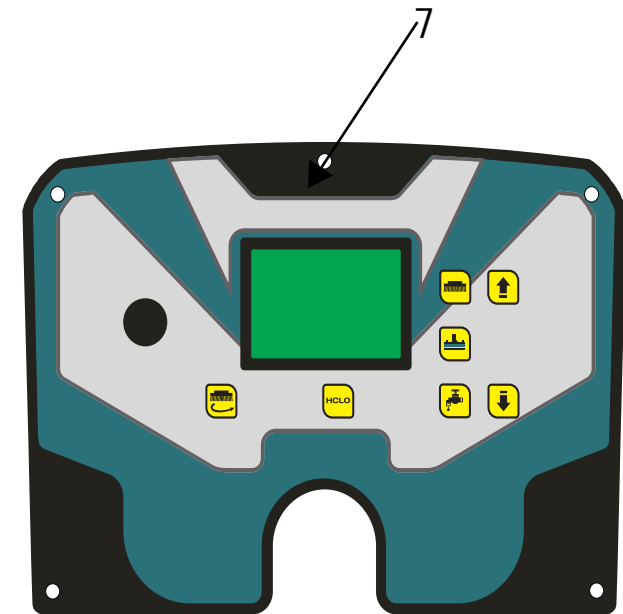
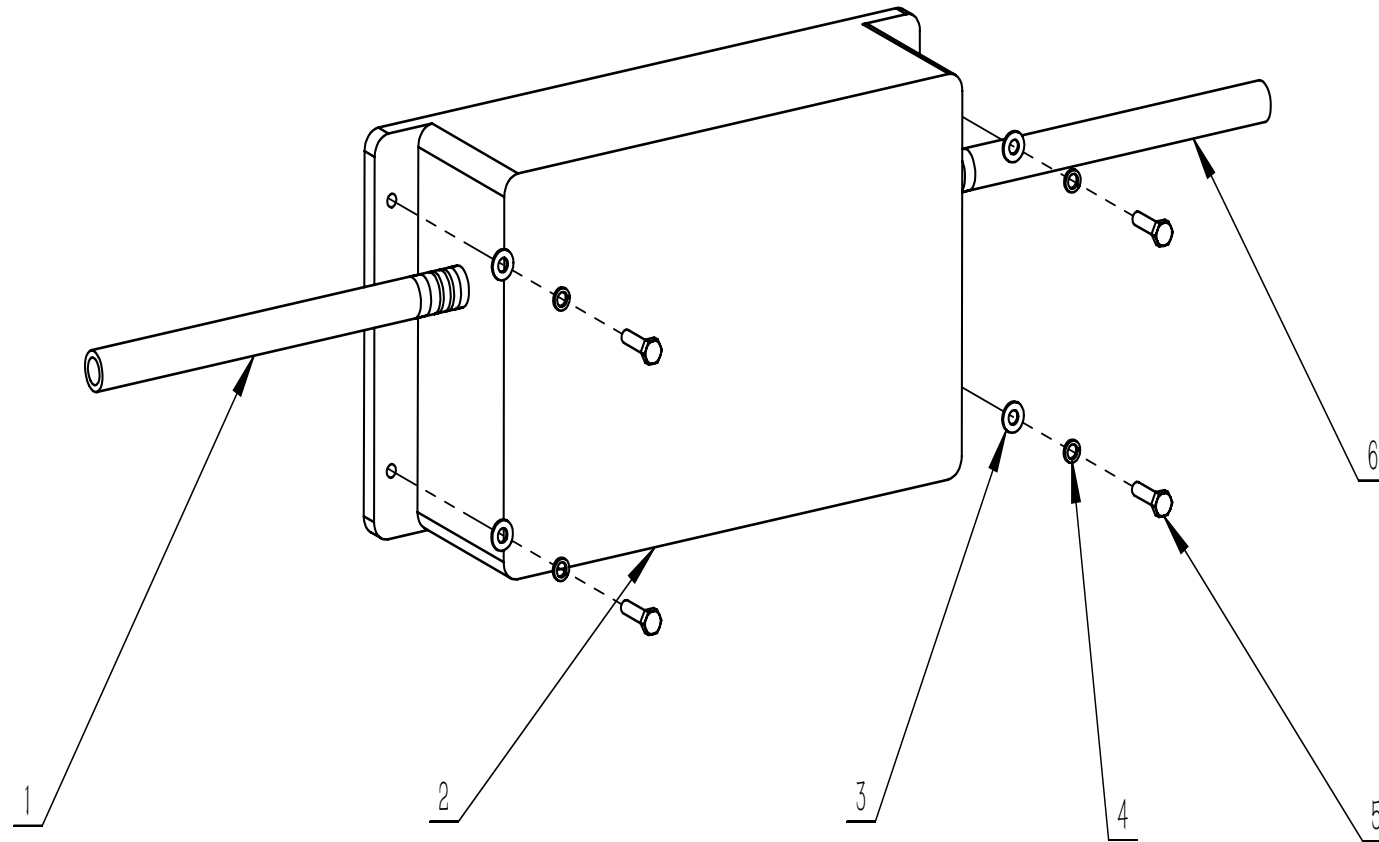
项目号 ITEM	零件号 P/N	名称	数量 QTY	DESCRIPTION
67	N010002	外六角-M8x30-镀锌	8	SCREW M8x30 ZINC
68	N030011	平垫-12x24x2.5-镀锌	16	WASHER 12x24x2.5 ZINC
69	N070023	鱼眼轴承 SA8T	8	FISHEYE JOINT BEARING SA8T
70	N030031	平垫-5x10x1-镀锌	2	WASHER 5x10x1 ZINC
71	N040007	弹垫-M5-镀锌	2	LOCK WASHER M5 ZINC
72	A020036	微动开关支架	1	MICRO SWITCH BRACKET
73	N010024	外六角-M5x12-镀锌	2	SCREW M5x12 ZINC
74	N030019	平垫-3x7x0.5-不锈钢	4	WASHER 3x7x0.5
75	N010027	外六角-M3x20-不锈钢	2	SCREW M3x20 A2
76	W020370	防水微动开关组件3常闭	1	MICROSWITCH ASSEMBLY NORMALLY SWITCH OFF
77	N020045	自锁螺母-M3-不锈钢	2	LOCK NUT M3 A2
78	A030088	电池盒 T130	1	BATTERY BASE T130
79	W020090	三级过滤器组件 T130	1	TERTIARY FILTER ASSEMBLY T130
80	B060120	扒头支架轴肩螺栓	1	SUPPORT SHOULDER BOLT
81	N020054	螺母-M8-镀黑锌	4	NUT M8 BLACK ZINC
82	N080019	卡簧 D35	1	CIRCLIP D35
83	B050056	垫片 D15xD23x2	1	WASHER D15xD23x2
84	N070019	轴承-6202ZZ-不锈钢	1	BEARING 6202ZZ
85	N100006	吊环活节螺栓 M8x35	2	SWING BOLT M8x35
86	N010154	沉头内六角-M6x12-不锈钢	4	SCREW M6x12 A2
87	B070054	拉簧 2.5×19.5×165.5	2	SPRING 2.5×19.5×165.5
88	B050057	轴承座法兰	1	BEARING SUPPORT FLANGE
89	A050061	扒头支架连接板	1	SUPPORT CONNECTING PLATE
90	N020003	自锁螺母-M12x1.75-镀锌	1	LOCK NUT M12x1.75 ZINC
91	B060152	拉臂 L=140	4	ARM L=140
92	N020018	螺母-M8-镀锌	8	NUT M8 ZINC



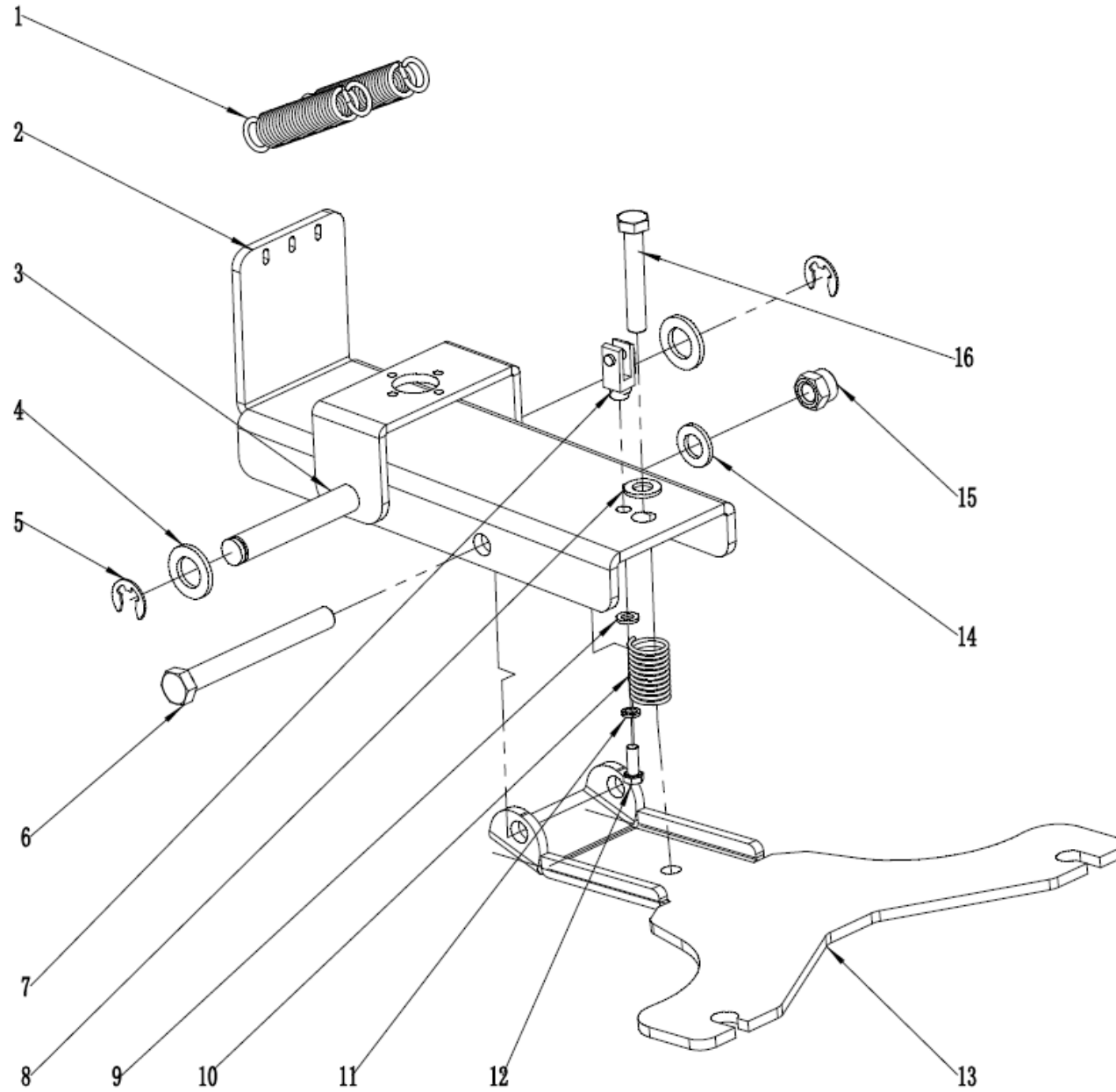
项目号 ITEM	零件号 P/N	名称	数量 QTY	DESCRIPTION
1	N110074	AMER 驱动电机轮毂 T130	1	HUB T130
2	N110075	灰色轮毂电机轮胎 250X80 T130	1	GREY MOTORWHEEL TYRE 250X80 T130
3	E040282	碳刷 T130	1	BRUSH KIT (4 Pcs) T130
4	W020356	电磁刹车 24VDC 5Nm L=700 T130	1	ELECTROBRAKE 24VDC 5Nm L=700 T130
5	N050002	套筒 MTR11xMP80 T130	1	SLEEVE MTR11 X MP80 T130
6	N050003	轮胎脉冲器套件 T130	1	TIRE PULLER KIT T130
7	N050004	中心 INBUS 螺丝 T130	1	HUB INBUS SCREW T130
8	N050005	中心 TCEI 螺丝 T130	1	HUB TCEI SCREW T130



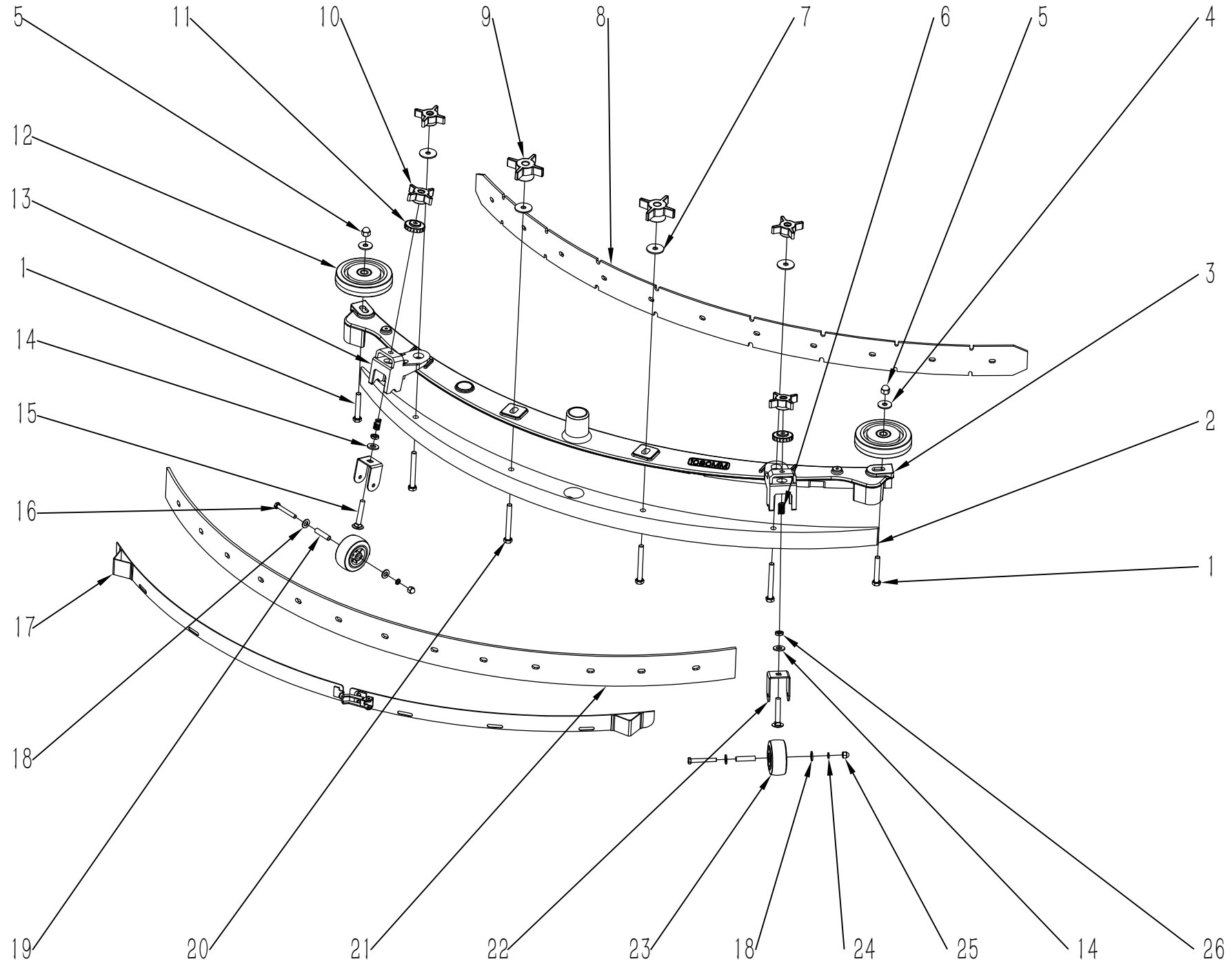
项目号 ITEM	零件号 P/N	名称 NAME	数量 QTY	英文名称 DESCRIPTION
1	F020032	铜接头 内丝 3/4 D=10 d=8	1	COPPER JOINT INNER FILAMENT3/4 D=10 d=8
2	F030065	铜螺母 1 寸 (反冲洗)	2	COPPER NUT 1 INCH BACKWASH
3	F020034	铜外丝接头 3/4 (反冲洗)	2	COPPER OUTER WIRE JOINT 3/4 BACKWASH T130
4	W020092	反冲洗过滤器 T130	1	BACKWASH FILTER T130
5	A010181	安装座底座 T130	1	INSTALLATION BASE T130
6	F020031	铜接头 外丝 1/2 转内丝 3/4	1	COPPER JOINT OUTER FILAMENT 1/2TO INNER FILAMENT3/4
7	F010001	蝶形球阀-1/2-	1	BALL VALVE 1/2 D=10
8	F020033	直角弯头 1/2 D=19 d=16	1	RIGHT ANGLE ELBOW 1/2 D=19 d=16
9	F030066	过滤桶刮筒-反冲洗-T1	1	FILTER BARREL SCRAPER BACKWASH T130
10	F030067	过滤桶-反冲洗-T130	1	FILTER BUCKET BACKWASH T130
11	N040013	弹垫-M8-镀锌	2	LOCK WASHER M8 ZINC
12	N010043	外六角-M8x40-镀锌	2	SCREW M8x40 ZINC
13	N030006	平垫-8x16x1.6-镀锌	2	WASHER 8x16x1.6 ZINC
14	A040087	安装座卡箍 T130	1	INSTALLATION SEAT CLAMP T130



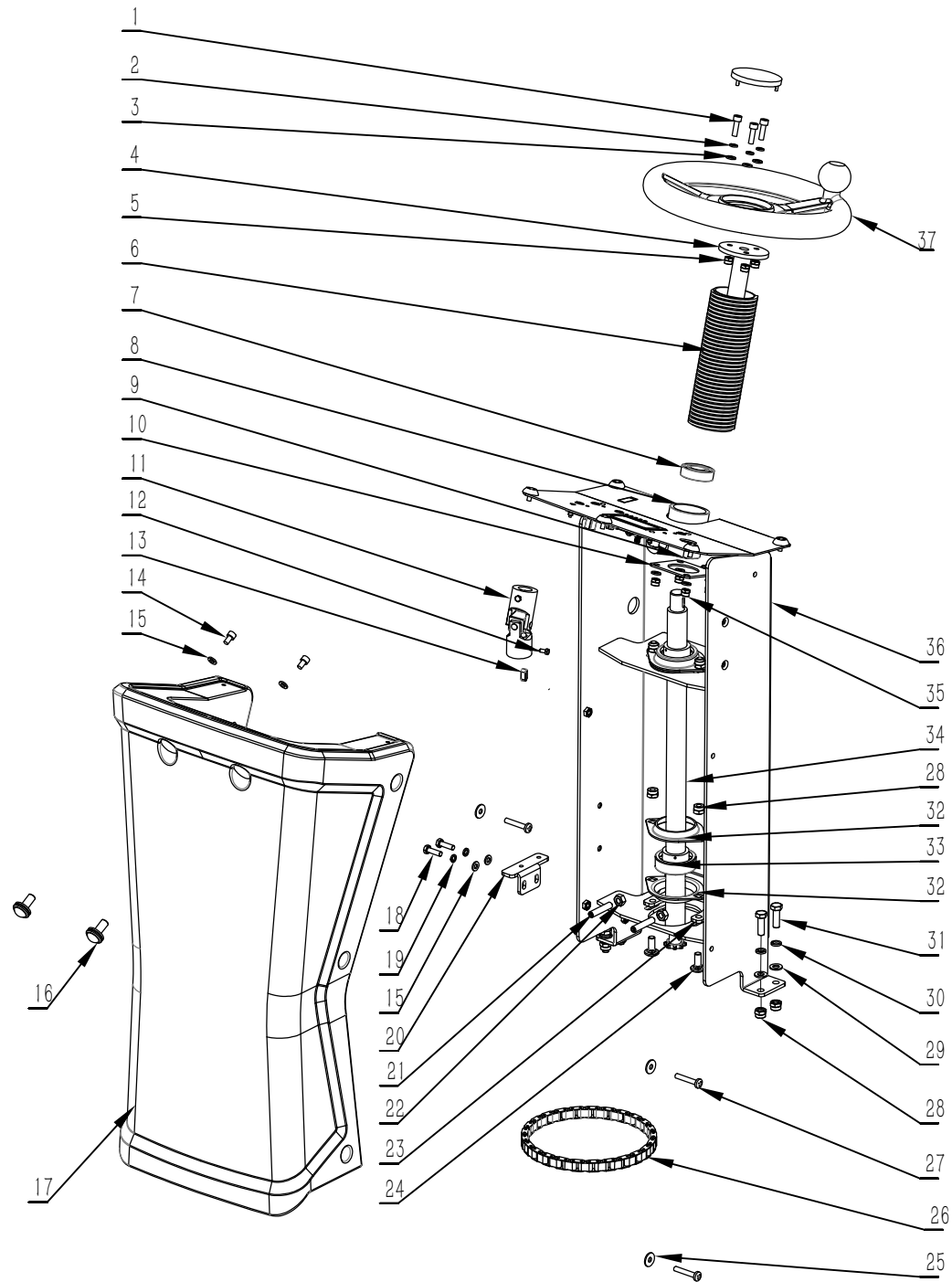
项目号 ITEM	零件号 P/N	名称	数量 QTY	DESCRIPTION
1	F050088.14	硅胶水管 D=12 d=8 L=1200	1	SILICONE HOSE D=12 d=8 L=1200
2	W020211	次氯酸组件	1	HYPOCHLOROUS ACID ASSEMBLY
3	N030053	平垫-4x9x1-不锈钢	4	WAHSE 4x9x1 ZINC
4	N040019	弹垫-M4-不锈钢	4	LOCK WASHER M4
5	N010028	外六角-M4x16-不锈钢	4	SCREW M4x16 A2
6	F050088.15	硅胶水管 D=12 d=8 L=1100	1	SILICONE HOSE D=12 d=8 L=1100
7	C040484A	控制面板标贴-T130HCLO	1	CONTROL PANEL LABEL T130HCLO



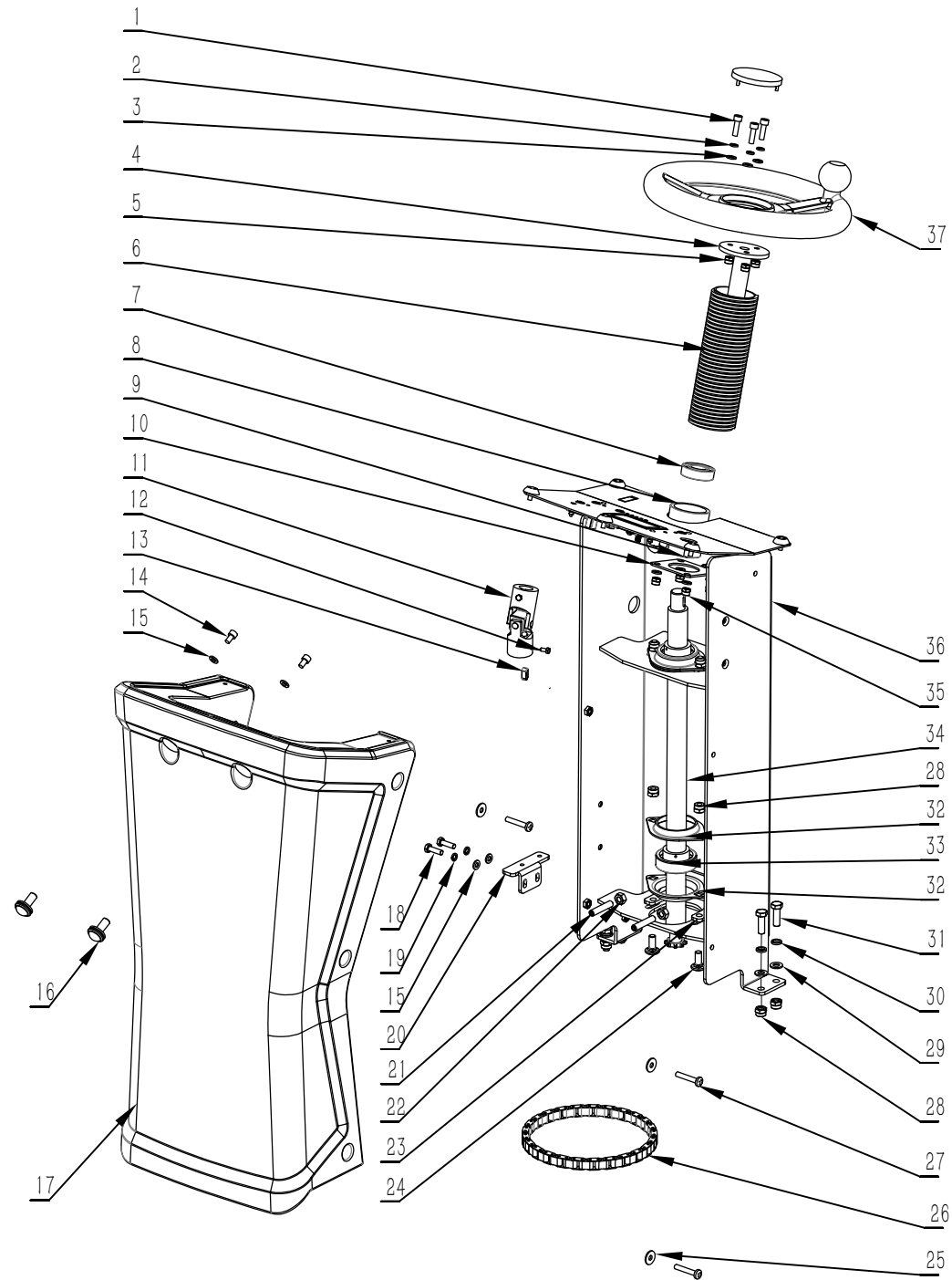
项目号 ITEM	零件号 P/N	名称 NAME	数量 QTY	英文名称 DESCRIPTION
1	B070008	拉簧 2.8x20x109	2	SPRING 2.8x20x109
2	A050060	扒头上支架 T150 随摆	1	SUPPORT
3	B060100	传动轴 $\Phi 15 \times 124$	1	AXIS OF ROTATION $\Phi 15 \times 124$
4	N030029	平垫-14x28x2.5-不锈钢	2	WASHER 14x28x2.5 ZINC
5	N080010	卡簧 $\Phi 12$	2	CIRCLIP $\Phi 12$
6	N010158	外六角 M12x110 不锈钢	1	SCREW M12x110 A2
7	N060006	夹片式 Y 型接头 Y-16	1	Y-CONNECTOR Y-16
8	N030051	平垫 10*20*2 不锈钢	1	WASHER 10x20x2 ZINC
9	N030007	平垫 6x12x1.6 镀锌	1	WASHER 6x12x1.6 ZINC
10	B070025	矩形弹簧 $\Phi 10.5 \times \Phi 20 \times 50$	1	RECTANGULAR SPRING
11	N040001	弹垫 M6 镀锌	1	LOCK WASHER M6 ZINC
12	N010005	外六角 M6x16 镀锌	1	SCREW M6x16 ZINC
13	A050068	扒头下支架 T130	1	SUPPORT DOWN T130
14	N030052	平垫 12*24*2.5 不锈钢	1	WAHSE 12x24x2.5 A2
15	N020060	自锁螺母 M12 不锈钢	1	LOCK NUT M12 A2
16	N010089	外六角 M10x60 不锈钢	1	SCREW M10x60 A2 WHOLE TOOTH



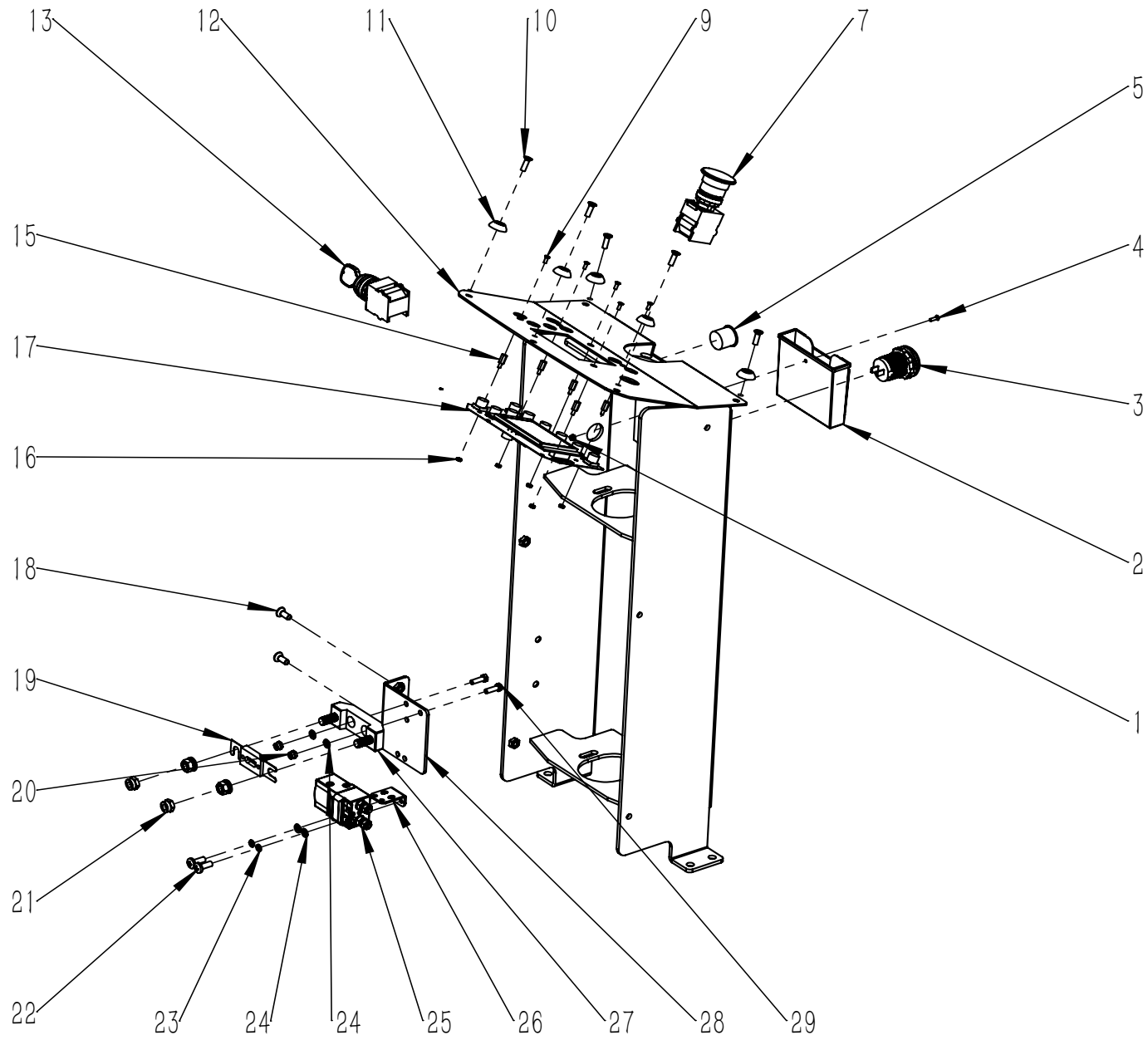
项目号 ITEM	零件号 P/N	名称	数量 QTY	DESCRIPTION
1	N010144	外六角-M8x50-不锈钢	2	SCREW M8x50 A2
2	B080034	半月板-1100-YS	1	PLATE 1100 YS
3	D010060	扒头主体-1100-YS	1	SQUEEGEE BODY 1100 YS
4	N030028	平垫 8x24x2 不锈钢	2	WASHER 8x24x2 A2
5	N020082	圆头盖型螺母-M8-不锈钢	2	ROUND HEAD CAP NUT M8 A2
6	B090020	压簧 D12XD10X19	2	SPRINGD12XD10X19
7	N030090	大平垫-8x30x2-不锈钢	4	WASHER 8x30x2 A2
8	C030166	前刮条-T130-YS	1	FRONT SQUEEGE BLADE RUBBER T130 YS
9	N020084	四星螺母-M8X69-黄色 YS	2	NUT M8x69(YELLOW) YS
10	N020083	四星螺母-M8x58-黄色-YS	4	NUT M8x58(YELLOW) YS
11	N020085	花型螺母-M8x36-黄色	2	NUT M8X36 YELLOW YS
12	R030024	防撞轮 D100x22	2	WHEEL D100x22
13	A250013	定向轮上支架	2	WHEEL SUPPORTUP
14	N030051	平垫 10x20x2 不锈钢	2	WASHER 10x20x2 A2
15	N010415	大圆头方颈螺栓-M8x50-不锈钢	2	SQUARE NECK BOLT M8x50 A2
16	N010114	外六角-M6x45-镀锌	2	SCREW M6x45 A2
17	A300011	扒头后钢条-1100-YS	1	BLADE REAR 1100 YS
18	N030010	平垫-8x16x1.6-不锈钢	10	WASHER 8x16x1.6 A2
19	B010108	定向轮轴套 D8xD6.5x33.5	2	SPACERD8XD6.5X33.5
20	N010127	外六角-M8x70-不锈钢-全牙	4	SCREWM8x70 A2
21	C030167	后刮条-T130-YS	1	BEAR SQUEEGE BLADE RUBBER TA130 YS
22	A250011	定向轮下支架	2	WHEEL SUPPORT DOWN
23	R030006	定向轮 D62x31	2	WHEEL D62X31
24	N040001	弹垫-M6-镀锌	2	LOCKWASHER M6 ZINC
25	N020013	圆头螺母-M6-不锈钢	2	ROUND HEAD CAP NUT M6 A2
26	N020043	薄螺母-M8-不锈钢	2	NUT M8 A2



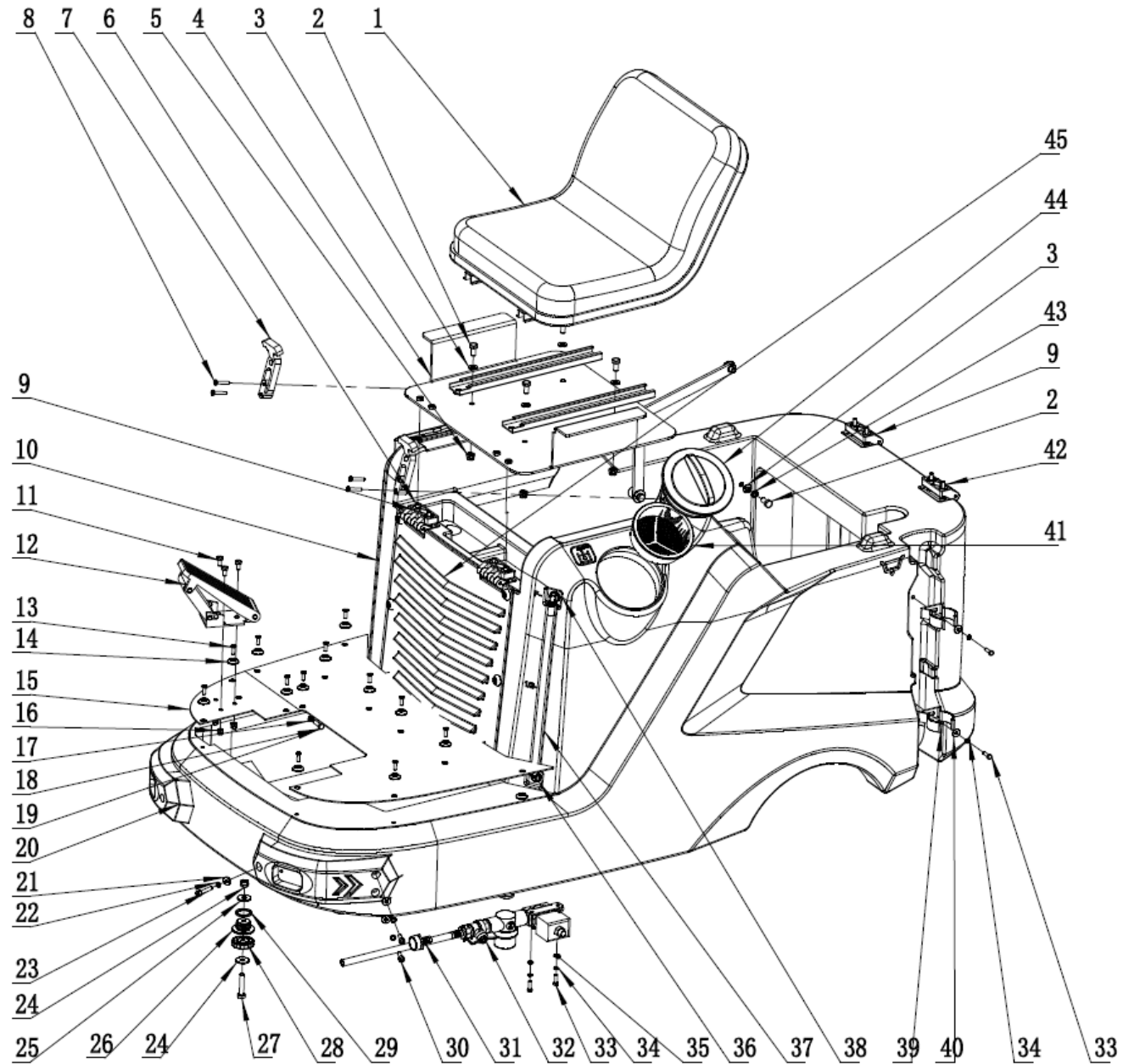
项目号 ITEM	零件号 P/N	名称	数量 QTY	DESCRIPTION
1	N010057	内六角圆柱头 M6x20 不锈钢	3	SCREW M6x20 A2
2	N040011	弹簧垫片 M6 不锈钢	3	LOCK WASHER M6 A2
3	N030024	平垫 6x12x1.6 不锈钢	3	WASHER 6x12x1.6 A2
4	B060153	方向盘固定轴 T130	1	SHAFT T130
5	N020006	自锁螺母 M6 不锈钢	3	LOCK NUT M6 A2
6	N090056	波纹管轴套 Φ50x176	1	SPACER Φ50x176
7	N070001	6004 轴承	2	BEARING 6004
8	D010010	轴承座	1	BEARING SUPPORT Φ70
9	N010223	沉头内六角 M6x30 镀锌	4	SCREW M6x30 ZINC
10	A020021	轴承座固定板 64x64	1	PLAQUE 64x64
11	N060014	万向节 18x32x85	1	UNIVERSAL JOINT 18x32x85
12	N010184	外六角 M6x8 (发黑)	2	SCREW M6x8 (BLACKENING)
13	N060020	平键 5.8x5.8x15.8	2	KEY 5.8x5.8x15.8
14	N010237	内六角圆柱头 M6×10 镀锌	2	HEXAGON SCREW M6x10 A2
15	N030007	平垫 6x12x1.6 镀锌	8	WASHER 6x12x1.6 ZINC
16	W020488	蓝色鹰眼灯	2	BLUE LIGHT
17	C010078	转向器外罩 T130 绿色	1	COVER T130 GREEN
18	N010006	外六角 M6x20 镀锌	2	SCREW M6x20 ZINC
19	N040001	弹垫 M6 镀锌	2	LOCK WASHER M6 ZINC
20	A020043	脚踏支架 T130	1	PEDAL BRACKER T130
21	N010140	内六角紧定螺钉 M8x40 不锈钢	2	SCREW M8x40 A2
22	N020010	螺母 M8x5 不锈钢	2	NUT M8 A2
23	A020020	轴承座固定支座 76	1	SUPPORT 76
24	N010091	圆头方颈螺栓 M8X20 镀锌	4	SCREW M8x20 ZINC
25	N030022	平垫 6x18x1.6 不锈钢	4	WASHER 6x18x1.6 A2
26	N100018	链条 06B-23/45	1	CHAIN 06B-23/45
27	N010224	盘头十字-M6x35-8.8 发黑	6	SELF TAPPING SCREW M6x35 BLACK8.8
28	N020001	自锁螺母 M8 镀锌	8	LOCK NUT M8 ZINC
29	N030006	平垫 8x16x1.6 镀锌	4	WASHER 8x16x1.6 ZINC



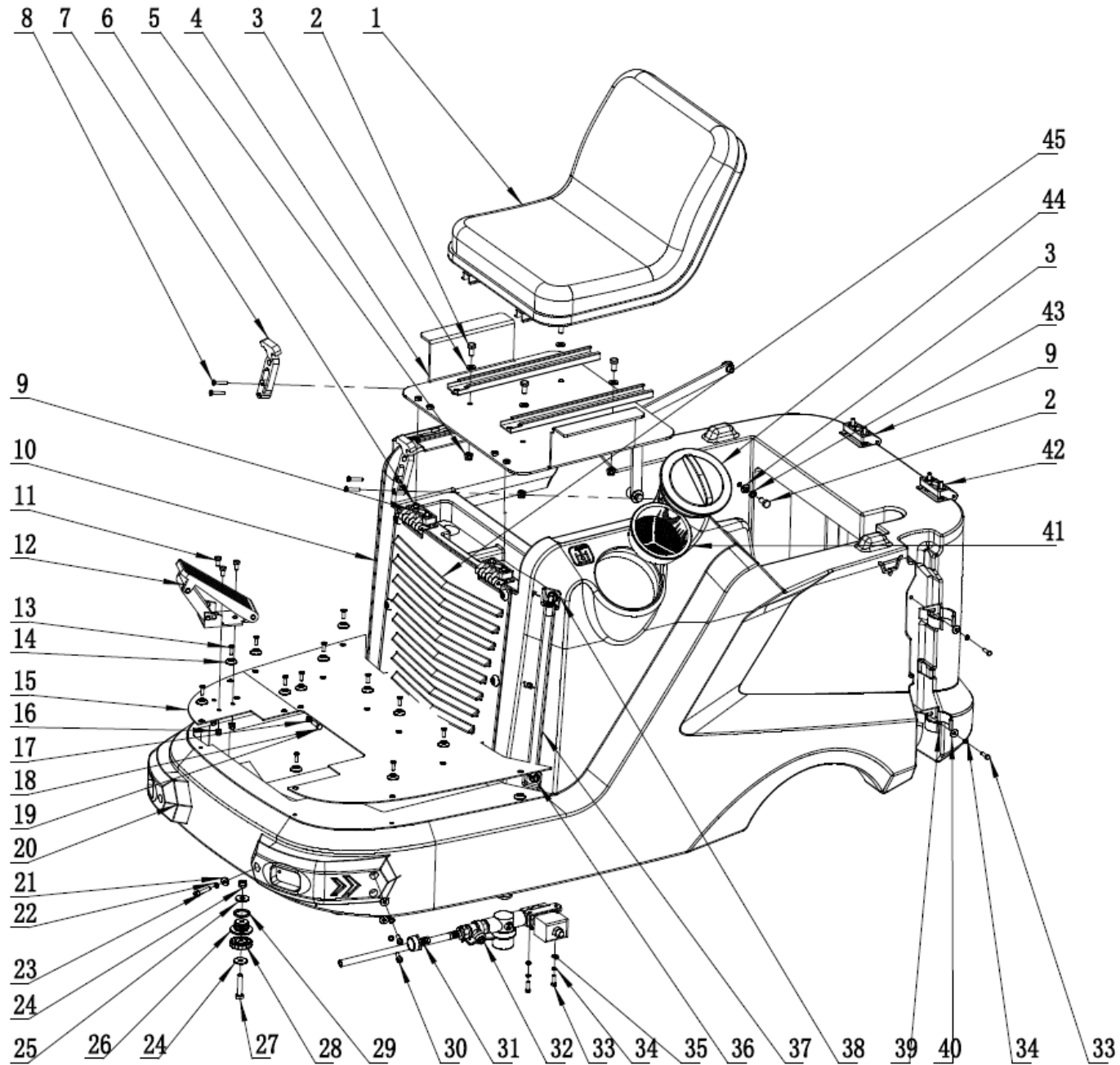
项目号 ITEM	零件号 P/N	名称	数量 QTY	DESCRIPTION
30	N040013	弹垫 M8 镀锌	4	LOCK WASHER M8 ZINC
31	N010007	外六角 M8x25 镀锌	4	SCREW M8x25 ZINC
32	N070004	SBPFL 205 轴承座	4	BEARING SUPPORT SBPFL 205
33	N070005	SBPFL 205 轴承	2	BEARING SBPFL 205
34	B060154	转向轴 T130	1	STEERING SHAFT T130
35	N020012	自锁螺母 M6 镀锌	4	LOCK NUT M6 ZINC
36	A020037	转向器支架 T130	1	SUPPORT T130
37	N110036	方向盘-带助力球-T150	1	STEERING WHEEL BOOSTER BALL T150



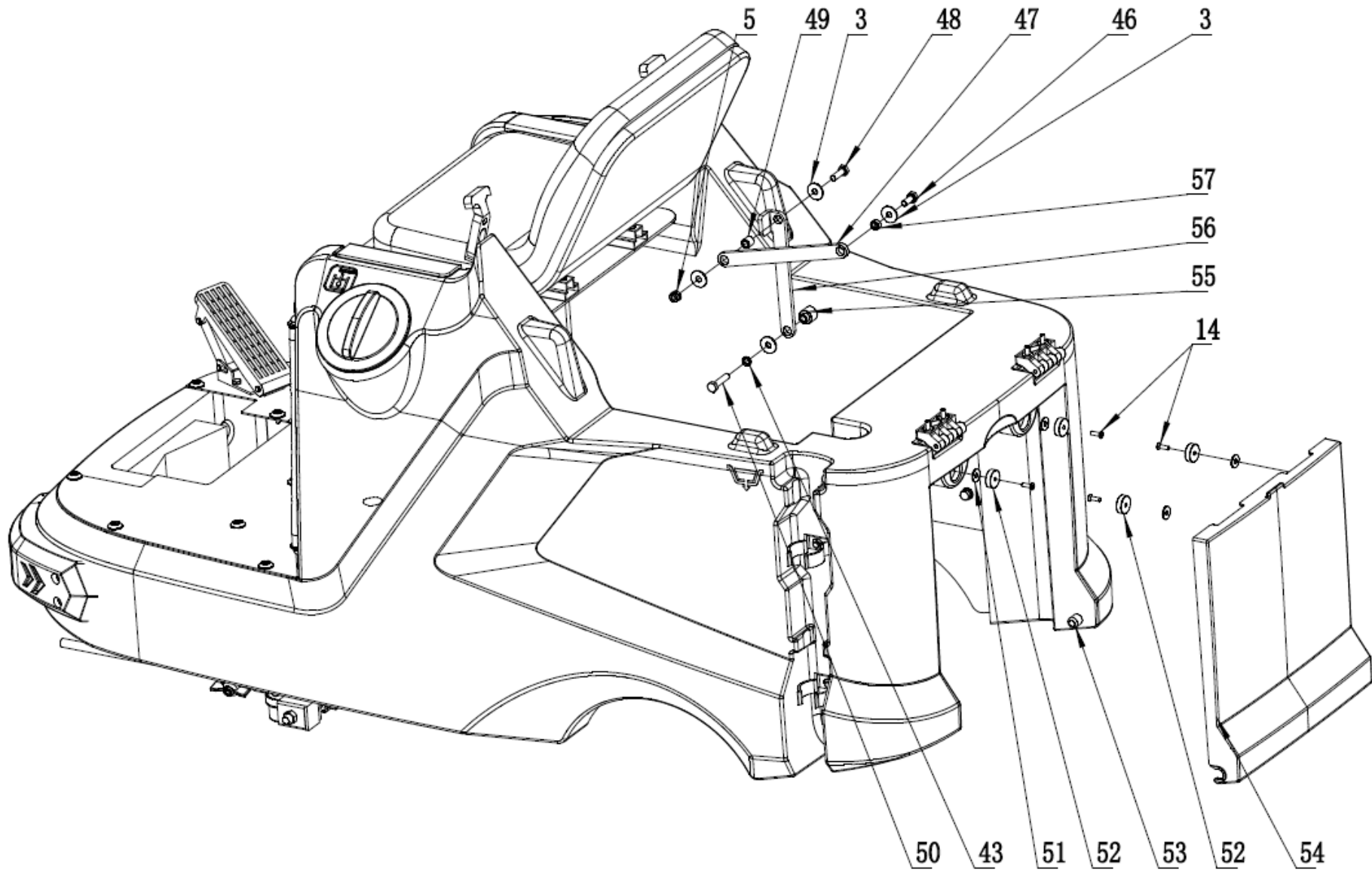
项目号 ITEM	零件号 P/N	名称	数量 QTY	DESCRIPTION
1	N020045	自锁螺母-M3-不锈钢	1	LOCK NUT M3 A2
2	C020079	手机盒 T130	1	MOBILE PHONE BOX T130
3	E020057	双USB 接口带灯-15W-T130	1	DUAL USB INTERFACE WITH LIGHT 15W T130
4	N010227	沉头十字-M3x10-8.8 镀黑锌	1	SUNK CROSS SCREW M3x10 8.8 BLACK ZINC
5	W020284	喇叭按钮组件 TS1300	1	HORN BUTTON ASSEMBLY TS1300
7	E020092	急停开关 双常闭	1	EMERGENCY STOP SWITCH DOUBLE NORMALLY CLOSED
9	N010103	十字沉头-M3x8-不锈钢	5	SCREW M3x8 A2
10	N010230	沉头十字-M5x16-镀黑锌	5	SCREW M5x16 BLACK ZINC PLATING
11	C020028	异形垫片 D5	5	WASHER D5
12	A020038A	控制面板 T130	1	CONTROL PANEL
	A020047A	控制面板-T130-不带水循环	1	CONTROL PANEL T130 WITHOUT WATER CIRCULATION
	A290006	控制面板 T130 次氯酸	1	CONTROL PANEL HYPOCHLOROUS ACID
13	W020013	钥匙开关组件 双开	1	KEY SWITCH ASSEMBLY
15	B020043	尼龙螺柱 M3x10+6	5	NYLON STUD M3x10+6
16	B060165	尼龙螺母 M3	5	NYLON NUT M3
17	W020424	控制面板组件-大能-T130	1	CONTROL PANEL ASSEMBLY DALA T130
	W020425	控制面板组件-大能-T130C	1	CONTROL PANEL ASSEMBLY DALA T130C
	W020426	控制面板组件-大能-T130D	1	CONTROL PANEL ASSEMBLY DALA T130D
18	N010365	沉头内六角-M6X16-镀黑锌	2	SCREW M6X16 BLACK ZINC
19	E050005	保险 80A	1	FUSE 80A
20	N020016	自锁螺母-M5-镀锌	2	LOCK NUT M5 ZINC
21	N020024	自锁螺母-M8-不锈钢	2	LOCK NUT M8 A2
22	N010073	圆头十字螺丝-M5x16-镀锌	2	SCREW M5x16 ZINC
23	N040007	弹垫-M5-镀锌	2	LOCK WASHER M5 ZINC
24	N030031	平垫-5x10x1-镀锌	4	WASHER 5x10x1 ZINC
25	E050095	直流接触器-24V-100A	1	RELAY 24V 100A
26	A030010	直流接触器支架 16x24x33	1	SUPPORT
27	E050004	保险座 80A	1	FUSE HOLDER 80A
28	A060039	安装支架 80X90	1	MOUNTING BRACKETS 80X90
29	N010025	外六角-M5x16-镀锌	2	SCREW M5x16 ZINC



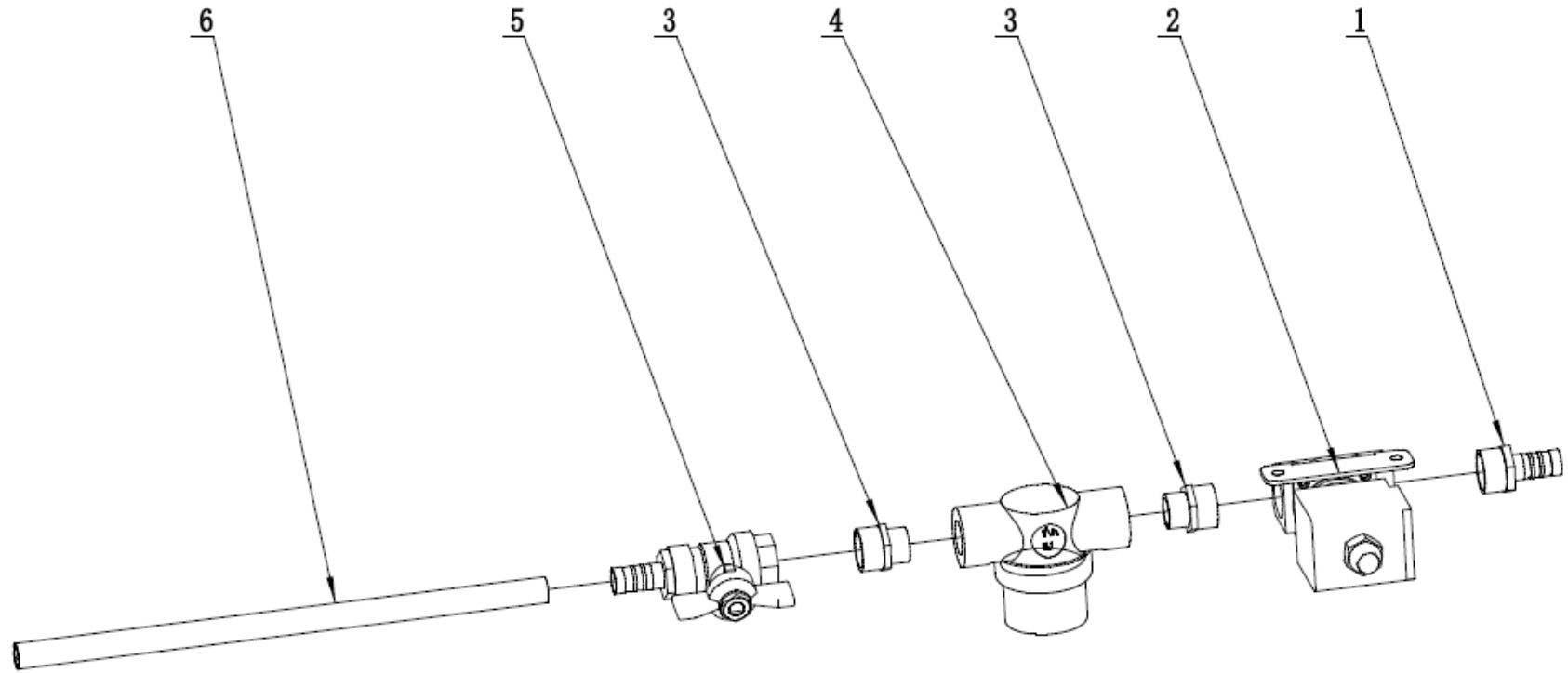
项目号 ITEM	零件号 P/N	名称 NAME	数量 QTY	英文名称 DESCRIPTION
1	C020080	安全座椅 T130	1	SAFETY SEAT T130
2	N010121	外六角 M8*16 镀锌	4	SCREW M8x16 ZINC
3	N030006	平垫 8x16x1.6 镀锌	8	WASHER 8x16x1.6 ZINC
4	A040077	座椅安装支架 T130	1	SEAT MOUNTING BRACKET T130
5	N020001	自锁螺母 M8 镀锌	8	LOCK NUT M8 ZINC
6	N010017	沉头内六角-M6x25-发黑	8	SCREW M6x25 BLACK
7	N090057	水箱搭扣 T130	2	RUBBER HASP T130
8	N010201	沉头十字 M5*30 不锈钢	4	SCREW M5x30 A2
9	C020110	合页 T130	4	HINGE T130
10	C010079	清水箱 135L 绿色	1	SOLUTION TANK 135L GREEN
11	N010007	外六角-M8x25-镀锌	2	SCREW M8x25 ZINC
12	E020096	脚踏开关 MSD129005	1	TOOT SWITCH MSD129005
13	C020028	异形垫片 Φ5	13	WASHER Φ5
14	N010134	沉头十字螺栓 M5x16 不锈钢	17	SCREW M5x16 A2
15	A030090A	脚踏垫	1	FOOT PAD T130
16	N020001	自锁螺母-M8-镀锌	2	LOCK NUT M8 ZINC
17	N030008	平垫-6x18x1.6-镀锌	2	WASHER 6x18x1.6 ZINC
18	N040001	弹垫-M6-镀锌	2	LOCK WASHER M6 ZINC
19	N010006	外六角-M6x20-镀锌	2	SCREW M6x20 ZINC
20	W020278	防撞灯 T130	2	ANTI-COLLISION LAMP T130
21	N030061	平垫-15x6.5x3-不锈钢	6	WASHER 15x6.3x3 A2
22	N040011	弹垫 M6 不锈钢	6	LOCK WASHER M6 A2
23	N010163	内六角螺杆-M6x30-不锈钢	2	SCREW M6x30 A2
24	N020024	自锁螺母 M8 不锈钢	1	LOCK NUT M8 A2
25	N030028	平垫 8x24x2 不锈钢	2	WASHER 8x24x2 A2
26	B020006	堵头 3/4"	1	PLUG 3/4"
27	N010068	外六角 M8X40 不锈钢	1	SCREW M8x40 A2
28	N020009	花型螺母 M8	1	NUT M8



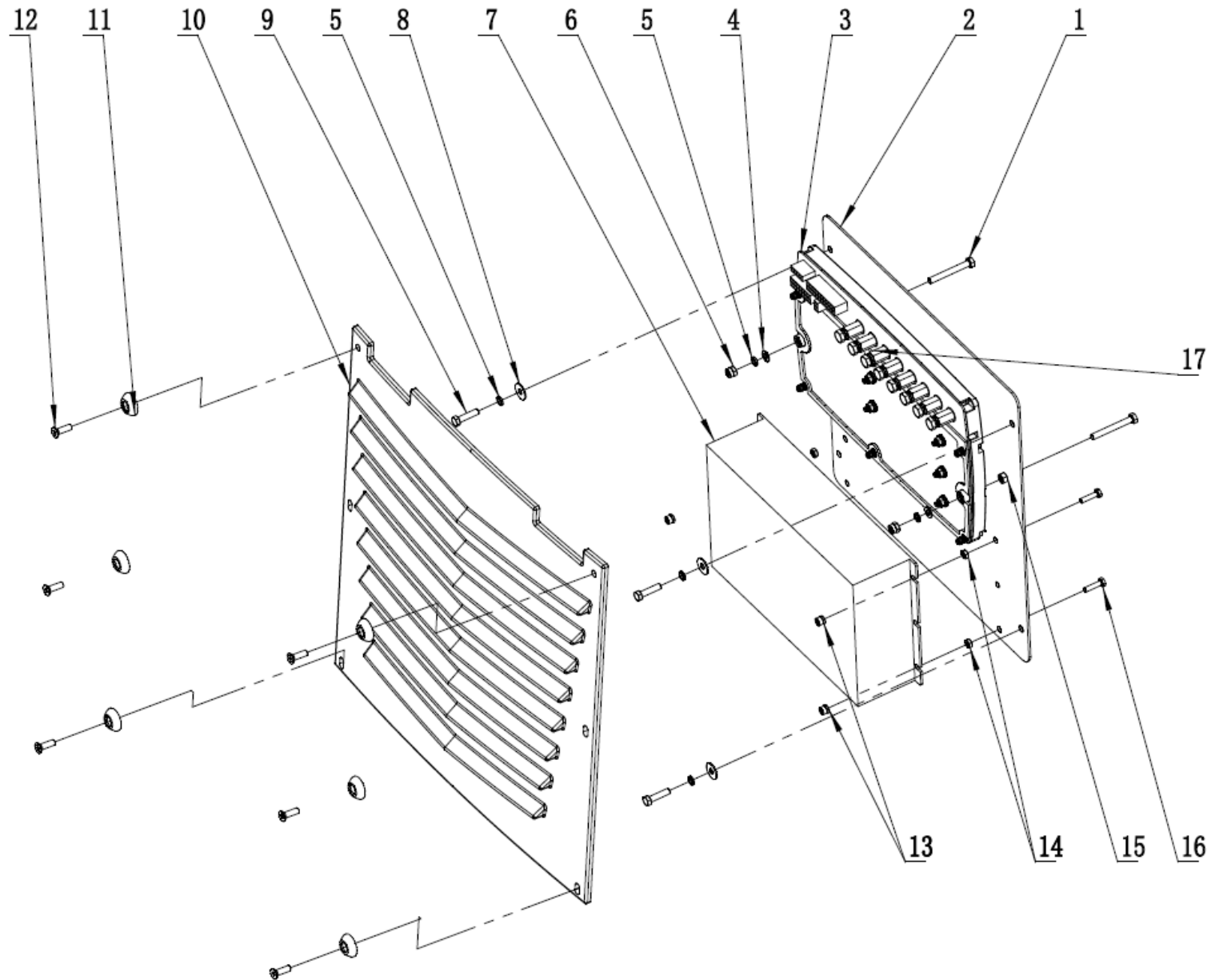
项目号 ITEM	零件号 P/N	名称 NAME	数量 QTY	英文名称 DESCRIPTION
29	N090079	O 型密封圈 $\Phi 34$ (内径) $\times \Phi 5$ (线径)	1	O RING $\Phi 34 \times \Phi 5$
30	N010057	内六角圆柱头 M6x20 不锈钢	4	SCREW M6x20 A2
31	F020014	快速接头 3/4 D=12 d=10	1	CONNECTOR 3/4 D=12 d=10
32	W020080	电磁阀过滤器组件 T130	1	SOLENOID VALVES AND FILTER ASSEMBLIES T130
33	N010029	外六角 M5x16 不锈钢	4	SCREW M5x16 A2
34	N040023	弹垫 M5 不锈钢	4	LOCK WASHER M5 A2
35	N030016	平垫 5x10x1 不锈钢	2	WASHER 5x10x1 A2
36	F020001	快速接头 $\Phi(8-6) \times 30$	2	CONNECTOR $\Phi(8-6) \times 30$
37	F050042.3	PU水管 D=12 d=8 L=338	1	PU TUBE D=12 d=8 L=338
38	C030013	密封垫 $\Phi 8$	2	GASKET $\Phi 8$
39	C020014	管托 $\Phi 43$	1	SCREW CLAMP $\Phi 43$
40	N030040	平垫-5x15x1.2-不锈钢	2	WASHER 5x15x1.2 A2
41	C020006	清水箱注水口滤网 D110	1	FILTER $\Phi 110$
42	N010017	沉头内六角 M6x25 发黑	8	SCREW M6x25
43	N040013	弹垫 M8 镀锌	6	LOCK WASHER M8 ZINC
44	C020005	清水箱注水口盖子 $\Phi 115$	1	THREADED COVER $\Phi 115$
45	W020081	电器组件 T130	1	ELECTRICAL ASSEMBLY T130



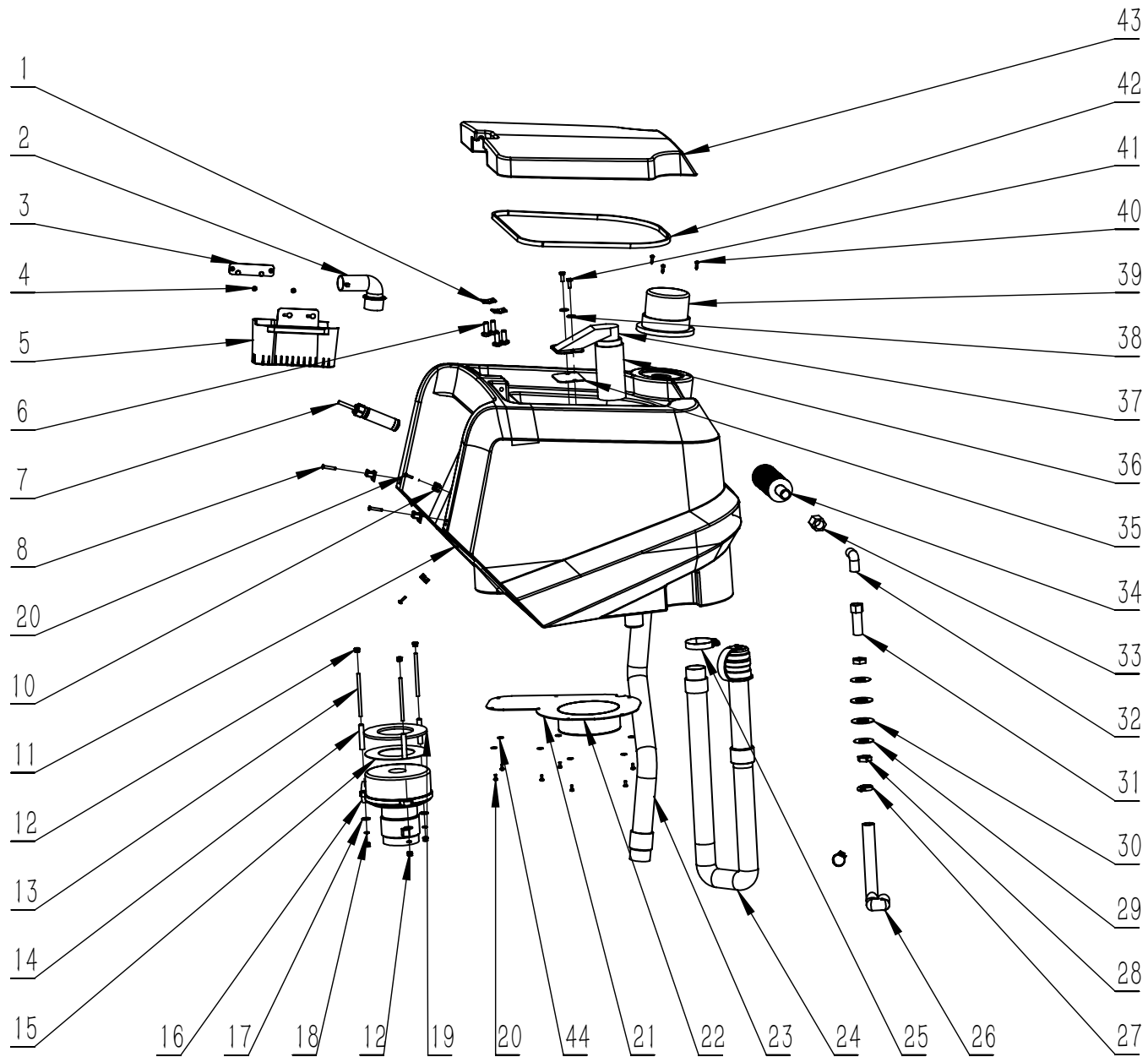
项目号 ITEM	零件号 P/N	名称	数量 QTY	DESCRIPTION
46	N010034	外六角-M8x20-镀锌	1	SCREW M8x20 ZINC
47	A020039	撑杆上支架 T130	1	BRACKET ON SUPPORT ROD
48	N010007	外六角 M8x25 镀锌	1	SCREW M8x25 ZINC
49	B020031	铜套 8.2x13x12.5	1	BUSHING 8.2x13x12.5
50	N010008	外六角 M8x35 镀锌	1	SCREW M8x35 ZINC
51	N030022	平垫 6x18x1.6 不锈钢	4	WASHER 6x18x1.6 A2
52	N060007	磁铁 $\Phi 25 \times \Phi 5 \times 8$ -17KG	4	MAGNET $\Phi 25 \times \Phi 5 \times 8$ -17KG
53	B010054	后盖板滑柱	2	SLIDING COLUMN
54	C010082	水箱后盖板	1	BACK COVER PLATE OF WATER TANK T130
55	B020032	铜套 8.2x20x16.5	1	BUSHING 8.2x20x16.5
56	A020040	撑杆下支架 T130	1	BRACKET UNDER SUPPORT ROD
57	B020033	铜套 8.2x13x6.5	1	BUSHING 8.2x13x6.5



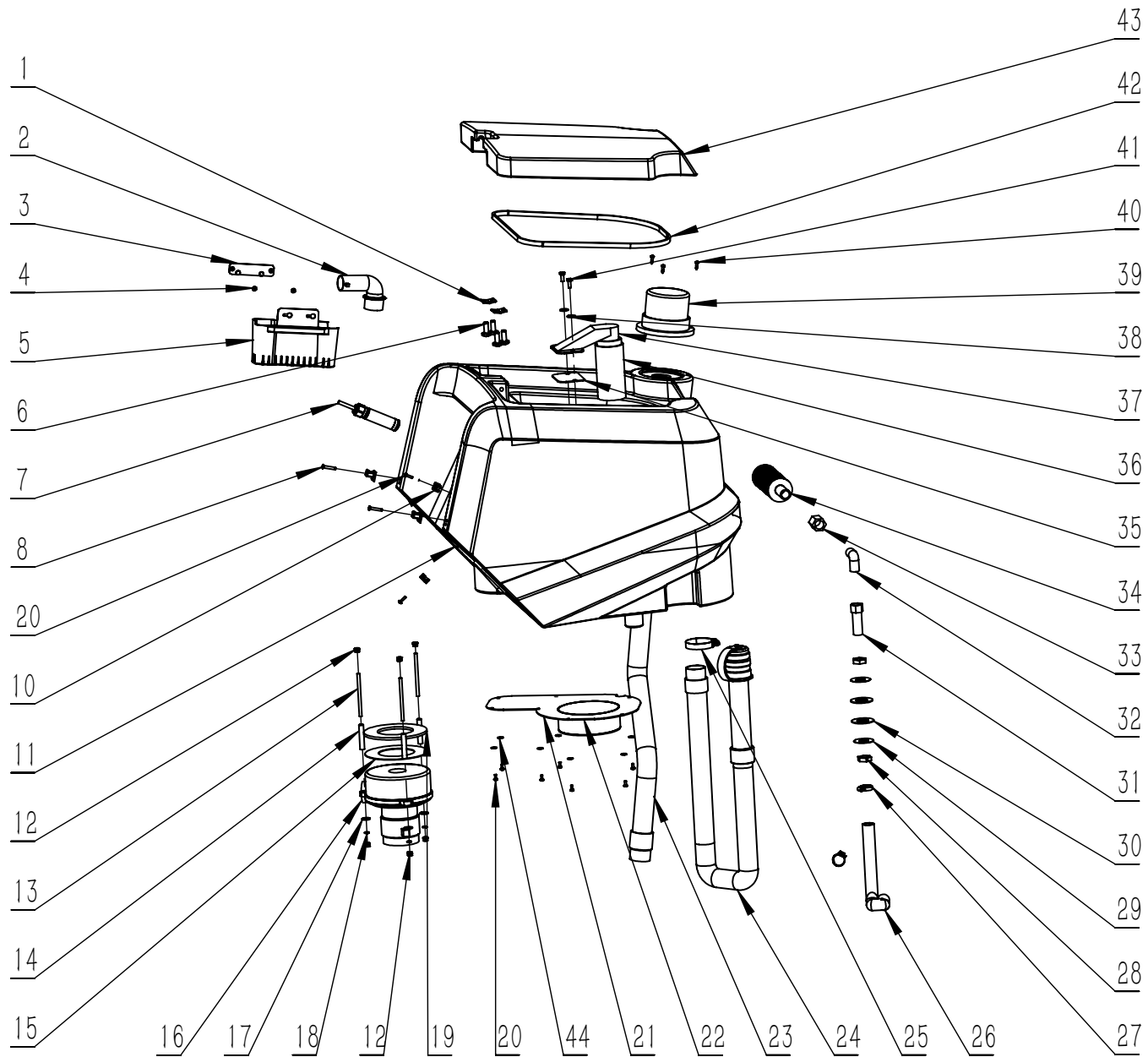
项目号 ITEM	零件号 P/N	名称 NAME	数量 QTY	英文名称 DESCRIPTION
1	F020002	快速接头 1/2	1	CONNECTOR 1/2
2	W020256	电磁阀组件 T55/70BT	1	SOLENOID VALVE ASSEMBLY T55/70BT
3	F020019	外丝接头 1/2-3/8 不锈钢	2	CONNECTOR 1/2-3/8 A2
4	F010004	过滤器 3/8	1	FILTER 3/8
5	F010006	蝶形球阀-1/2-直接头 D=10	1	BALL VALVE 1/2 CONNECTION STRAIGHT D=10
6	F050088.6	水管-D=12-d=8-L=310	1	WATER PIPE D=12 d=8 L=310



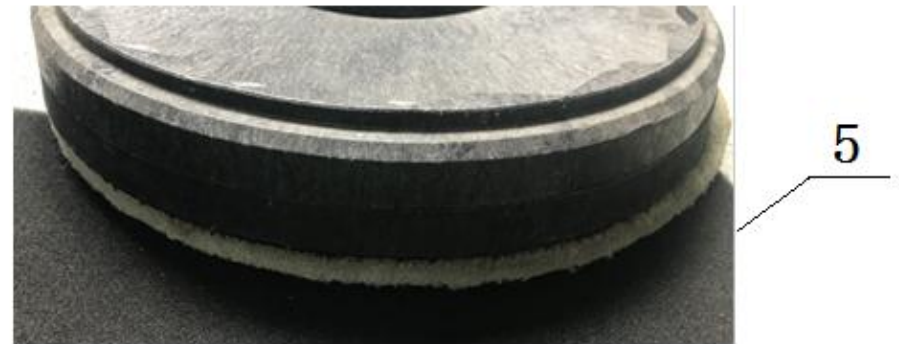
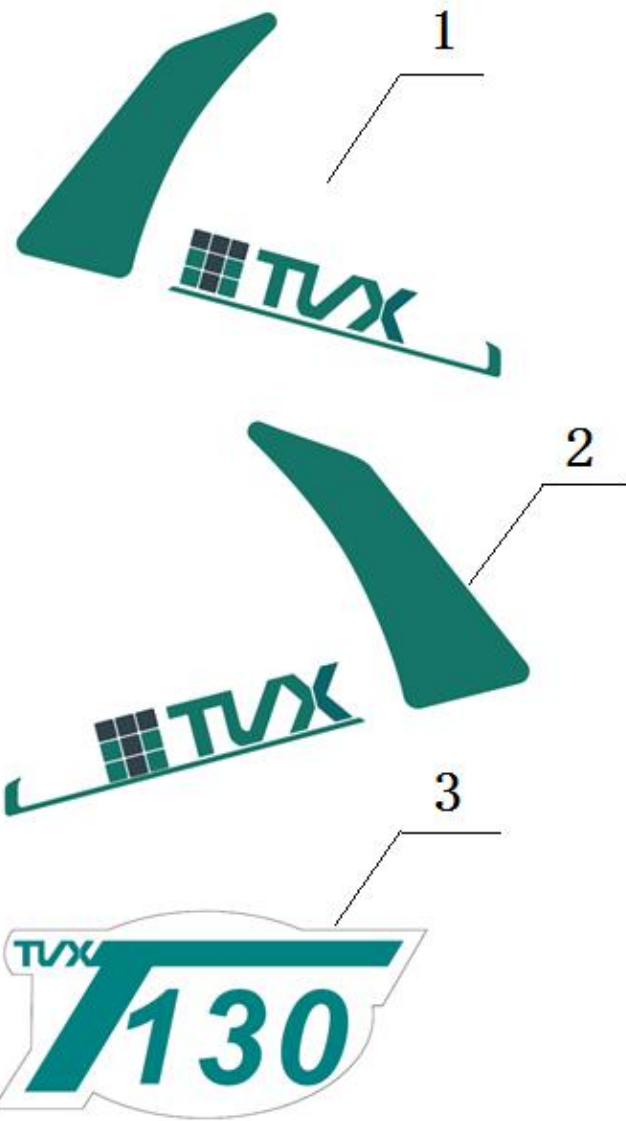
项目号 ITEM	零件号 P/N	名称 NAME	数量 QTY	英文名称 DESCRIPTION
1	N010079	外六角 M5x40 不锈钢	2	SCREW M5x40 A2
2	A020041	电器安装板 T130	1	ELECTRICAL INSTALLATION PLATE T130
3	W020402	控制器组件-大能-T130	1	CONTROLLER ASSEMBLY DALA T130
4	N030016	平垫 5x10x1 不锈钢	2	WASHER 5x10x1 A2
5	N040023	弹垫-M5-不锈钢	6	LOCK WASHER M5 A2
6	N020037	自锁螺母 M5 不锈钢	2	LOCK NUT M5 A2
7	E040123	充电器组件-24V-20A-带灯-超威	1	CHARGER-LIGHT-24V 20A CW
8	N030040	平垫-5x15x1.2-不锈钢	4	WASHER 5x15x1 A2
9	N010135	外六角-M5x20-不锈钢	4	SCREW M5x20 A2
10	A020042	电器盖板 T130	1	ELECTRICAL COVER PLATE T130
11	C020028	异形垫片 ϕ 5	6	WASHER Φ 5
12	N010134	沉头十字螺栓 M5x16 不锈钢	6	SCREW M5x16 A2
13	N020042	自锁螺母-M4-不锈钢	4	LOCK NUT M4 A2
14	N020061	螺母-M4-不锈钢	4	NUT M4 A2
15	N020046	螺母-M5-不锈钢	2	NUT M5 A2
16	N010028	外六角-M4x16-不锈钢	4	SCREW M4x16 A2
17	E080192	线束组件 T130	1	WIRE HARNESS T130



项目号 ITEM	零件号 P/N	名称	数量 QTY	DESCRIPTION
1	A010001	箱盖固定板 34x30	2	PLAQUE 34x30
2	C020008	污水进水口弯头 D.38	1	CONNECTOR BEND D.38
3	A040107	过滤篮固定座 100x25x3	1	FILTER BASKET HOLDER 100x25x3
4	N010097	沉头十字自攻螺栓-M4.2x13-不锈钢	2	SELF TAPPING SCREW M4.2x13 A2
5	C020087	一级过滤器 T130	1	PRIMARY FILTER T130
6	N010011	圆头十字自攻螺丝 4.8x13	4	SELF TAPPING SCREW 4.8x13
7	W020280	鸭嘴式液位开关 T130	1	DUCK BILLED LEVEL SWITCH T130
8	N010201	十字沉头-M5x30-不锈钢	2	SCREW M5x30 A2
10	N090002	扎带固定座 23x16	4	SUPPORT 23x16
11	C010081	污水箱-130L-绿色	1	RECOVERY TANK 130L GREEN
12	N020012	自锁螺母-M6-镀锌	6	LOCK NUT M6 ZINC
13	N100008	螺杆 M6x100	3	SCREW M6x100mm
14	B050029	支撑套管 55	3	SLEEVING 55
15	F040005	背胶-D(140-70)-3M	1	3M ADHESIVES GUM ϕ (140-70)
16	W020283	吸水电机-24V-500W-T130	1	VACUUM MOTOR 24V 500W T130
17	N030008	平垫-6x18x1.6-镀锌	3	WASHER 6x18x1.6 ZINC
18	N040001	弹垫-M6-镀锌	3	LOCK WASHER M6 ZINC
19	F040001	吸水电机消音垫 D140x5	1	SPONGE ϕ 140x5
20	N010225	盘头十字-M4x10-不锈钢	11	SELF TAPPING SCREW M4x10 A2
21	A040086	消音盖板 T130	1	MUFFLER COVER T130
22	C020086	隔音棉 T130	1	SOUNDPROOF COTTON T130
23	F060020	吸污管-D.38x650-PU+PVC	1	SUCTION HOSE D.38x650 PU+PVC
24	F060015	排污管 D38x1200	1	DRAINAGE PIPE ϕ 38x1200
25	F050006	卡箍 D33-57	1	SCREW CLAMP ϕ 33-57
26	F050021.2	钢丝水管-D=25-d=20 L=670	1	STEEL PIPE D=26 d=20 L=670
27	F050004	卡箍 D18-32	2	SCREW CLAMP ϕ 18-32
28	F030063	螺母 G1/2 不锈钢	2	NUT G1/2 STAINLESS STEEL



项目号 ITEM	零件号 P/N	名称	数量 QTY	DESCRIPTION
29	N030060	平垫-φ44×φ21×1-不锈钢	2	WASHER φ44×φ21×1 A2
30	F040012	硅胶垫 D47xD21x3	2	SILICONE PAD D47xD21x3
31	F020025	内丝接头 G1/2 转外丝接头 G1/2	1	INNER CONNECTION G1/2 TO OUTER CONNECTION G1/2
32	F020027	直角接头 G1/2	1	RIGHT ANGLE JOINT G1/2
33	F020026	直通接头 G1/2	1	DIRECT JOINT G1/2
34	C020103	二级过滤器 T130	1	SECONDARY FILTER T130
35	C030040	吸水口密封垫 T35	1	SUCTION GASKET T35
36	F040010	吸水口浮球 T35	1	SEWAGE TANK FLOAT FILTER
37	C020049	吸水口主体 T35	1	SUCTION BODY T35
38	N030022	平垫-6x18x1.6-不锈钢	2	WASHER 6x18x1.6 A2
39	W020281	警示灯 T150	1	WARING LIGHT T150
40	N010052	圆头十字自攻螺丝-M4.2x16-不锈钢	3	SELF TAPPING SCREW M4.2x16 A2
41	N010226	外六角-M6x16-黑色 PP	2	SCREW M6x16 BLACK PP
42	N090010.3	密封胶条 19.5x9.5x9 L=1250	1	RUBBER 19.5x9.5x9 L=1250
43	C010080	污水箱盖板 T130	1	RECOVERY TANK COVER T130
44	N030059	平垫-4x12x1.1-不锈钢	7	WASHER 4x12x1.1 A2



项目号 ITEM	零件号 P/N	名称	数量 QTY	DESCRIPTION
1	C040167	左侧标签 T130 绿色	1	LEFT LABEL T130
2	C040168	右侧标签 T130 绿色	1	RIGHT LABEL T130
3	C040169	标识标签 T130	1	DECAL T130
4	N150003	刷盘-16 英寸-PP0.6	2	16" BRUSH PP 0.6
	N150010	刷盘-16 英寸-PP0.28	2	16" BRUSH PP 0.28
5	N150011	针盘 16 英寸	2	16" PAD HOLDER
6	N150044	锁水刷盘-16 英寸	2	16" BRUSH WATER LOCK
7	C030168	刷盘防溅条左-无痕-灰色-T130	1	LEFT RUBBER SKIRT T130
8	C030175	刷盘防溅条右-无痕-灰色-T130	1	RIGHT RUBBER SKIRT T130
9	C030166PU	前刮条-耐油-T130	1	FRONT SQUEEGE BLADE RUBBER PU T130
10	C030167PU	后刮条-耐油-T130	1	REAR SQUEEGE BLADE RUBBER PU T130