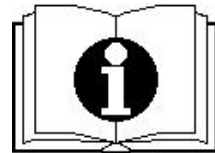




— SCHEMATIC DRAWINGS —

装配示意图



驾驶式洗地机 T150PRO

Scrubber Dryer T150PRO

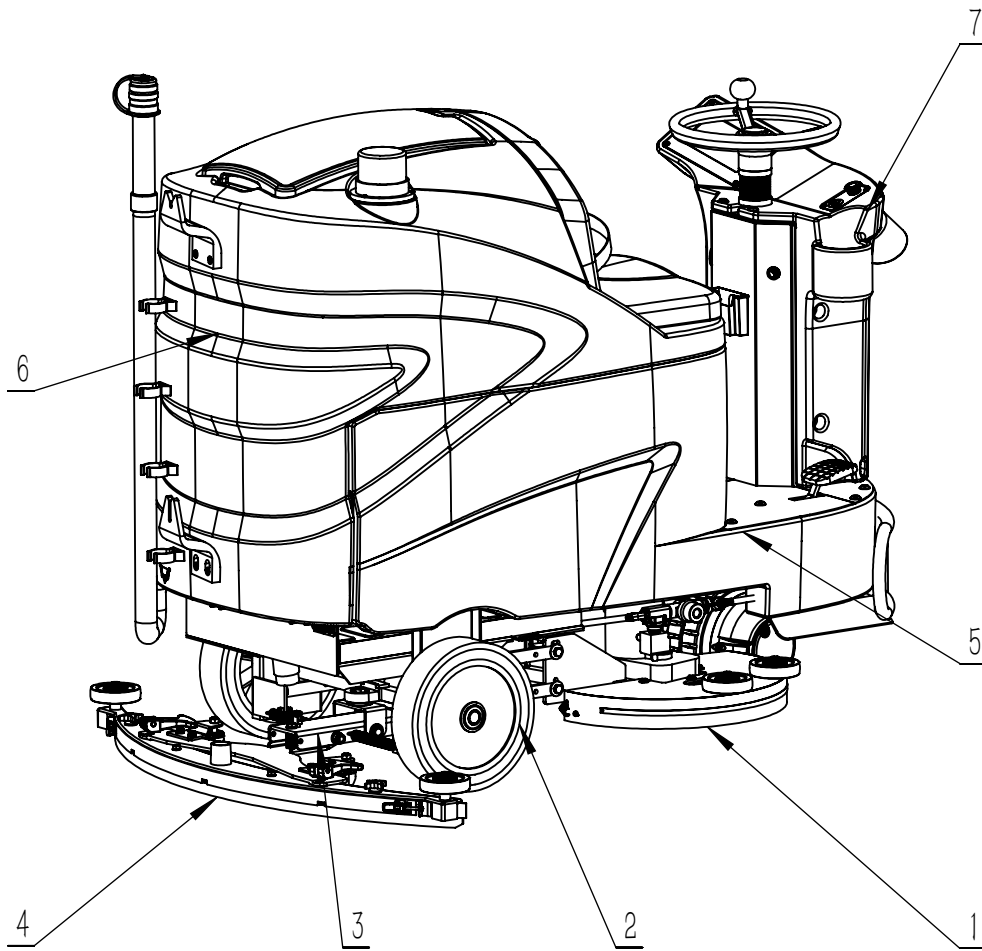
Issued in Aug. 2023

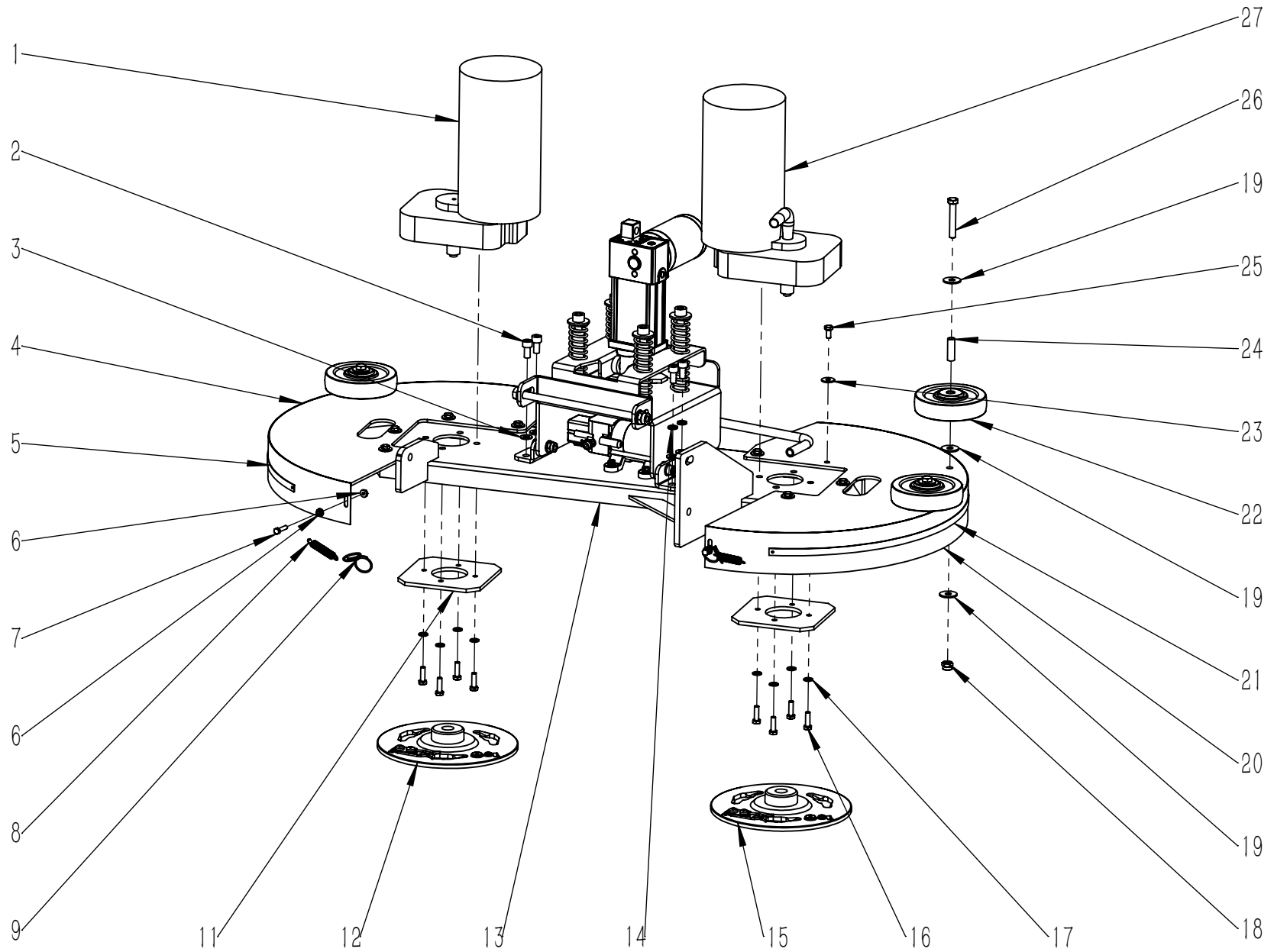
V06



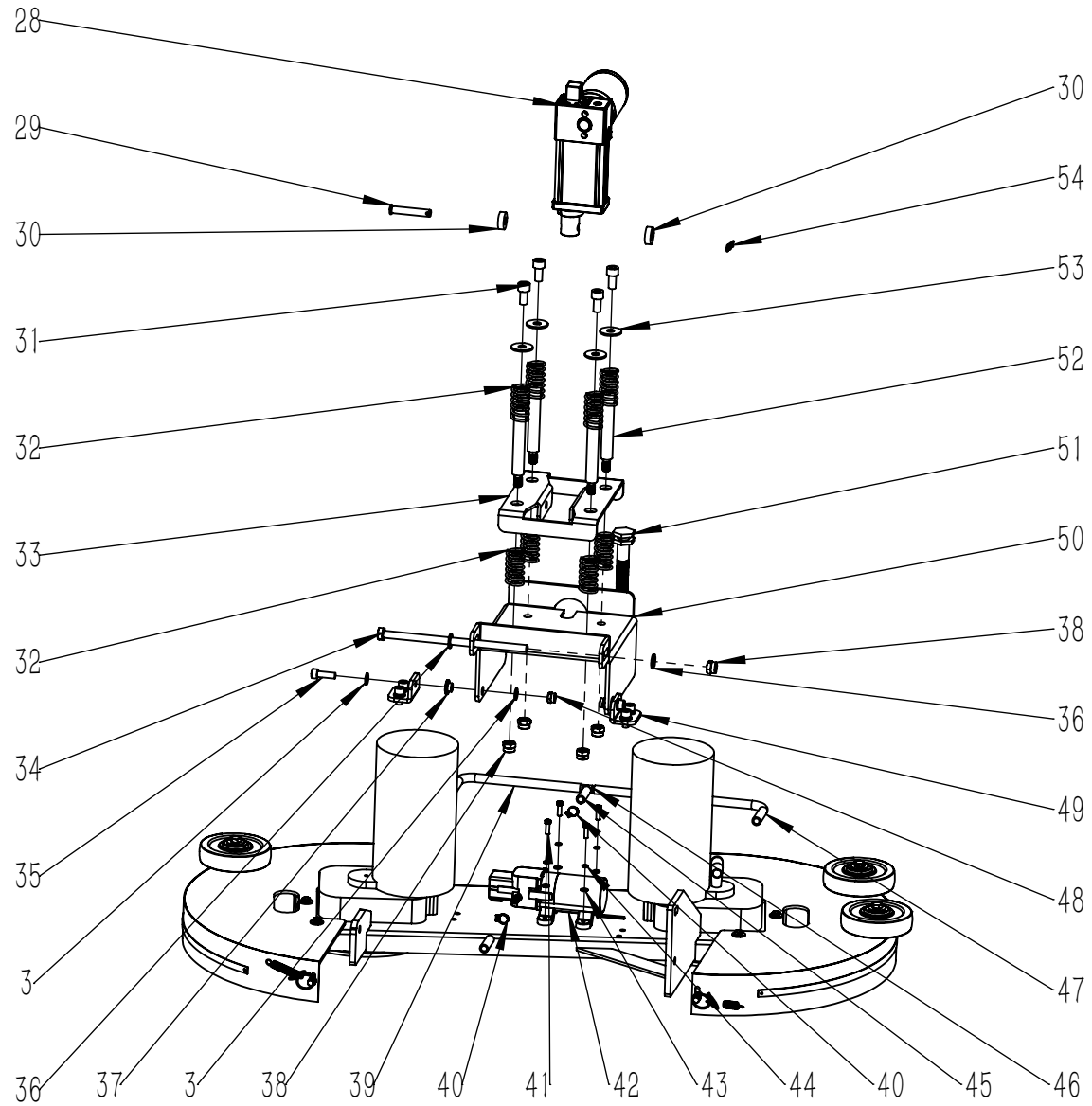
# 目 录

1. 机头组件·····	1—4
NOSE ASSEMBLY	
2. 底座架组件·····	5—14
FRAME ASSEMBLY	
3. 扒头支架组件·····	15—16
SQUEEGEE SUPPORT ASSEMBLY	
4. 扒头组件·····	17—18
SQUEEGEE ASSEMBLY	
5. 清水箱组件·····	19—24
SOLUTION TANK ASSEMBLY	
6. 污水箱组件·····	25—30
RECOVERY TANK ASSEMBLY	
7. 转向组件·····	31—36
DIVERSION ASSEMBLY	
8. 包装组件·····	37
PACKAGING ASSEMBLY	

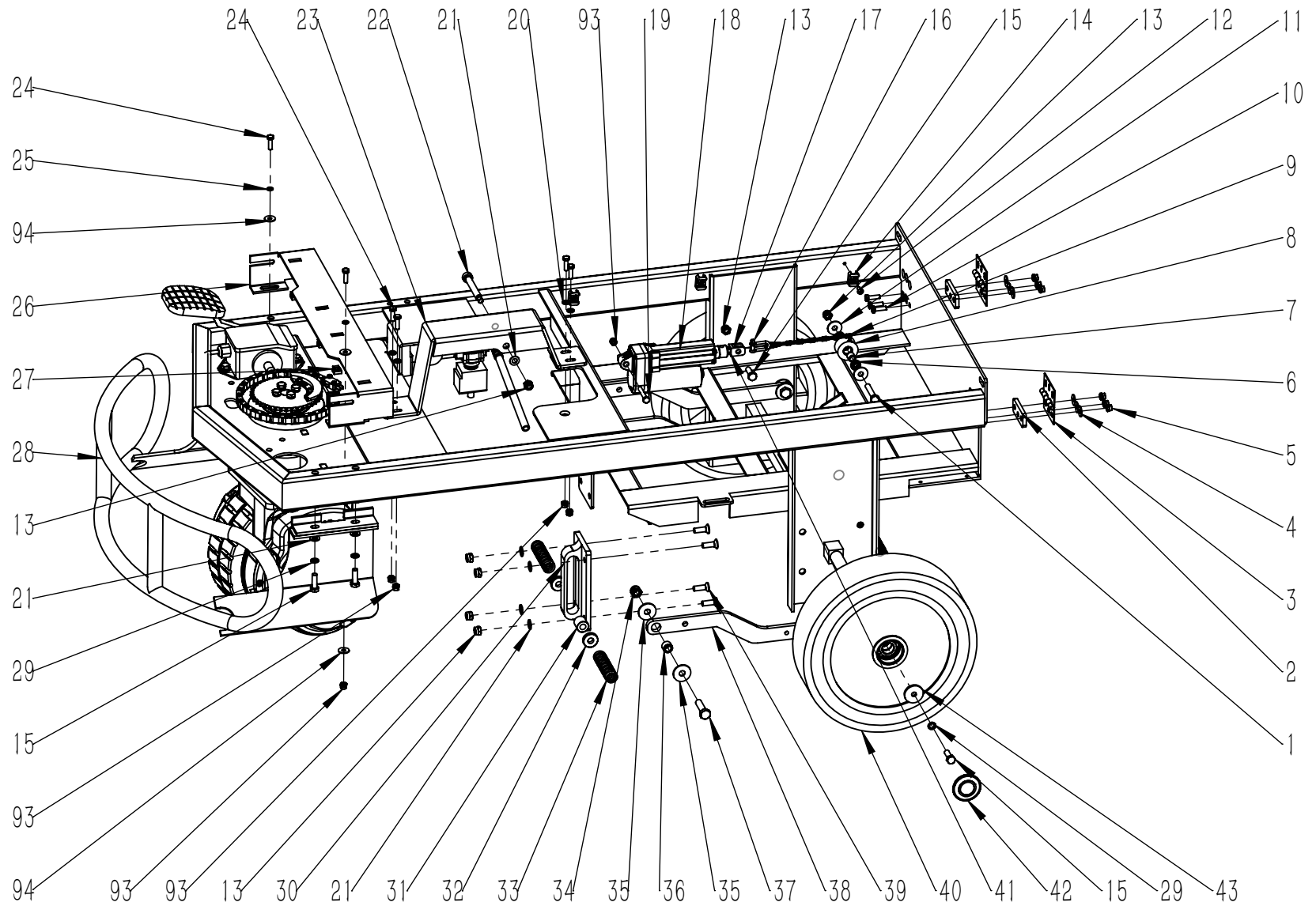




项目号 ITEM	零件号 P/N	数量 QTY	名称	DESCRIPTION
1	W020299	1	左刷盘电机组件 36V 550W	LEFT BRUSH PLATE MOTOR ASSEMBLY 36V 550W
2	N010041	4	内六角圆柱头螺栓-M8x16-镀锌	SCREW M8x16 ZINC
3	N030006	8	平垫-8x16x1.6-镀锌	WASHER 8x16x1.6 ZINC
4	A040048	1	机头右护罩 D500	HEAD COVER RIGHT $\Phi$ 500
5	A040053	1	防溅条紧固钢条 10x690	BLADE 10x690
6	N020049	8	法兰面螺母-M5-不锈钢	NUT M5 A2
7	N010135	4	外六角-M5x20-不锈钢	SCREW M5x20 A2
8	B060012	2	钢条拉簧 1.1x10x55	SPRING 1.1x10x55
9	B070010	2	异型套圈 2x26	RING 2x26
11	A040026	2	电机固定板 120x120	PLAQUE 120x120
12	W020078	1	刷盘锁紧器组件-右	LOCKER ASSEMBLY-RIGHT
13	A040122	1	电机座	MOTOR SUPPORT
14	N040013	4	弹垫-M8-镀锌	LOCK WASHER M8 ZINC
15	W020077	1	刷盘锁紧器组件-左	LOCKER ASSEMBLY-LEFT
16	N010006	8	外六角-M6x20-镀锌	SCREW M6x20 ZINC
17	N040001	8	弹垫-M6-镀锌	LOCK WASHER M6 ZINC
18	N020024	3	自锁螺母-M8-不锈钢	LOCK NUT M8 A2
19	N030028	9	平垫-8x24x2-不锈钢	WASHER 8x24x2 A2
20	A040123	1	机头左护罩	LEFT HEAD GUARD
21	A040124	1	左防溅条紧固钢条	LEFT SPLASH BAR FASTENING STEEL BAR
22	N110019	3	防撞轮 D100x29.5	WHEEL $\Phi$ 100x29.5
23	N030022	8	平垫-6x18x1.6-不锈钢	WASHER 6x18x1.6 A2
24	B020027	3	防撞轮铜套 8x10x31	BUSHING 8x10x31
25	N010145	8	外六角-M6x12-不锈钢	SCREW M6x12 A2
26	N010144	3	外六角-M8x50-不锈钢	SCREW M8x50 A2
27	W020298	1	右刷盘电机组件 36V 550W	RIGHT BRUSH PLATE MOTOR ASSEMBLY 36V 550W

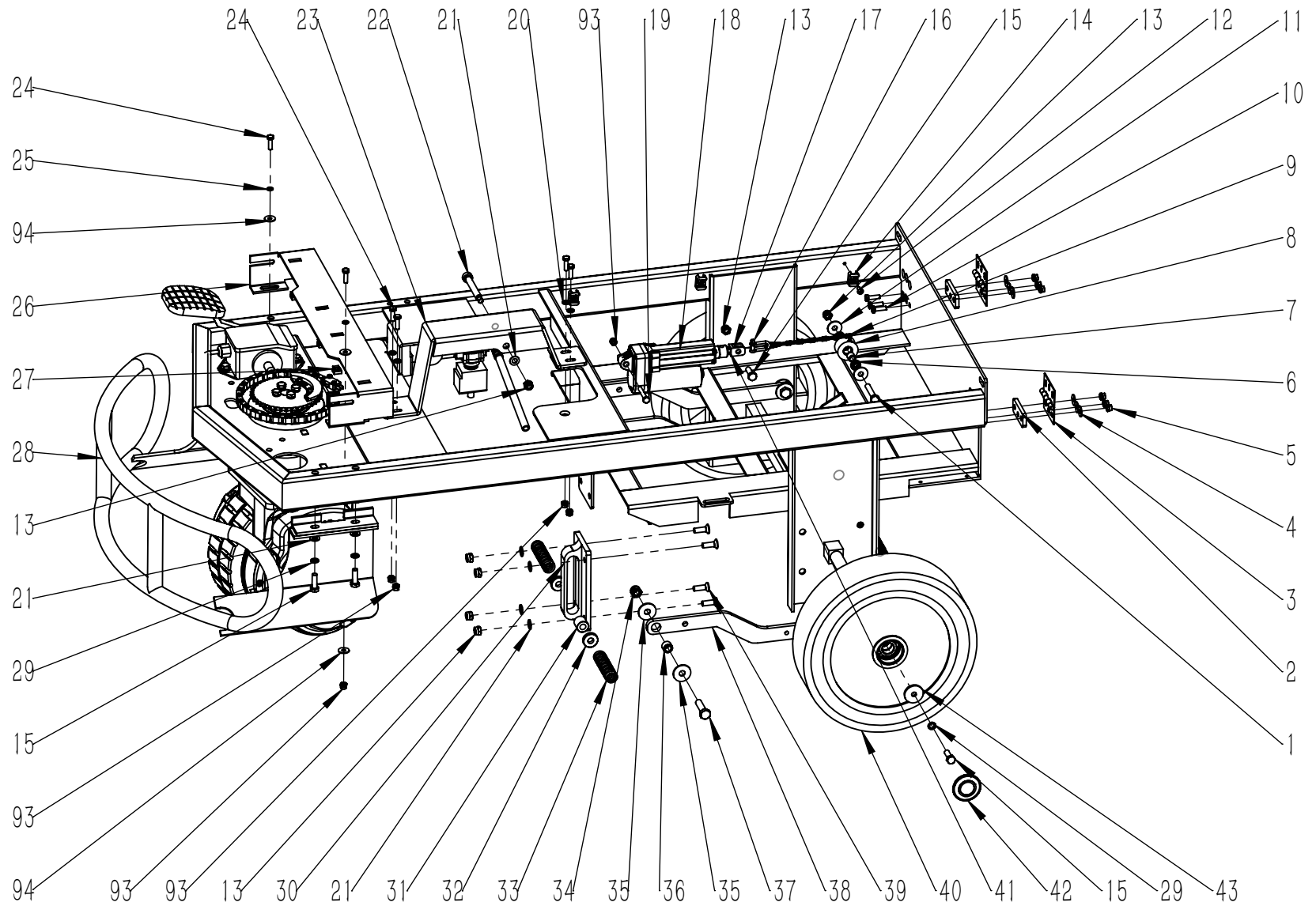


项目号 ITEM	零件号 P/N	数量 QTY	名称	DESCRIPTION
28	W020300	1	推杆电机组件-36V-L=70MM-HT63P04	MOTOR ASSEMBLY STROKE 36V-L=70MM-HT63P04
29	N010345	1	平头带孔销 镀锌	FLAT HEAD PIN WITH HOLE
30	B050078	2	尼龙垫片	NYLON GASKET
31	N010107	4	内六角圆柱头-M10x20-镀锌	SCREW M10x20 ZINC
32	B070051	8	压簧	COMPRESSION SPRING
33	A060036	1	压力调节上支架	PRESSURE ADJUSTMENT UPPER BRACKET
34	N010343	1	外六角螺栓-半牙-镀锌	SCREW ZINC
35	N010344	2	内六角圆柱头 镀锌	SCREW ZINC
36	N030004	2	平垫-10x20x2-镀锌	WASHER 10x20x2 ZINC
37	B020048	2	铜套	BUSHING
38	N020002	5	自锁螺母-M10-镀锌	LOCK NUT M10 ZINC
39	F050088.1	1	硅胶水管 D=12 d=8 L=315	SILICONE HOSE D=12 d=8 L=315
40	F050003	2	卡箍 D10-16	SCREW CLAMP D10-16
41	N010029	4	外六角-M5x16-不锈钢	SCREW M5x16 A2
42	W020272	1	微型水泵组件 24V	MICRO WATER PUMP ASSEMBLY 24V
43	N030016	4	平垫-5x10x1-不锈钢	WASHER 5x10x1
44	N040023	4	弹垫-M5-不锈钢	LOCK WASHER M5
45	F050088.2	1	硅胶水管 D=12 d=8 L=110	SILICONE HOSE D=12 d=8 L=110
46	F020012	1	三通宝塔接头-D=10-d=8	CONNECTOR D=10 d=8
47	F050088.3	1	硅胶水管 D=12 d=8 L=305	SILICONE HOSE D=12 d=8 L=305
48	N020001	2	自锁螺母-M8-镀锌	LOCK NUT M8 ZINC
49	A060038	2	安装支架	MOUNTING BRACKETS
50	A060037	1	压力调节下支架	PRESSURE ADJUSTMENT LOWER BRACKET
51	B060185	1	调节螺杆	ADJUSTING SCREW
52	B020047	4	压力调节支撑柱	PRESSURE ADJUSTMENT SUPPORT COLUMN
53	N030041	4	平垫-10x30x2.5-镀锌	WASHER 10x30x2.5 ZINC
54	N100035	1	R型弹簧插销 D2x40	BOLT TYPE R

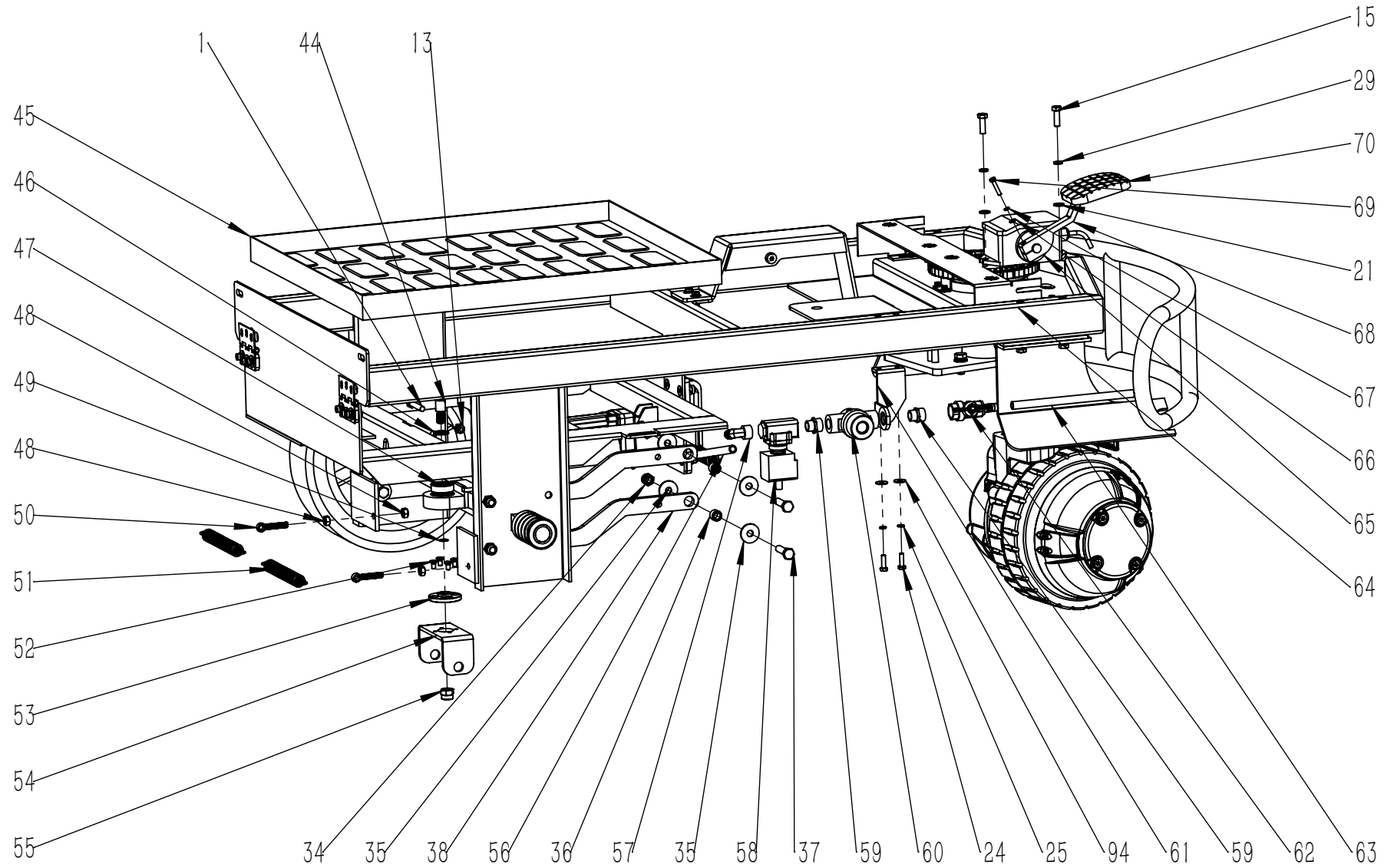


项目号 ITEM	零件号 P/N	数量 QTY	名称	DESCRIPTION
1	N010003	2	外六角-M8x45-镀锌	SCREW M8x45 ZINC
2	A030014	2	折页固定板 64x25	PLAQUE
3	N080004	2	折页 64x64	HINGE 64x64
4	N030077	6	平垫 6x18x1.6 镀黑锌	WASHER 6x18x1.6 BLACK ZINC
5	N020071	6	自锁螺母 M6 镀黑锌	LOCK NUT M6 BLACK ZINC
6	N070003	2	小轴承 688ZZ	BEARING 688 ZZ
7	B020019	1	铜套 8x12x11	BUSHING 8x12x11
8	B050010	1	滑轮 D35x20	ROLLER D35x20
9	N100016	1	链条 255	CHAIN 255
10	N010347	6	外六角 M6X20 镀黑锌	SCREW M6X20 BLACK ZINC
11	N030027	2	平垫-8x24x2-镀锌	WASHER 8x24x2 ZINC
12	N010112	3	十字盘头-M5x16-不锈钢	SCREW M5x16 A2
13	N020001	10	自锁螺母-M8-镀锌	LOCK NUT M8 ZINC
14	N090002	3	扎带固定座 23x16	SUPPORT 23x1
15	N010007	13	外六角-M8x25-镀锌	SCREW M8x25 ZINC
16	N060009	1	U型销 M5	SPLIT PIN M5
17	B060151	1	转拉线支架	STAY WIRE BRACKET
18	W020303	1	推杆电机组件2 行程60mm	MOTOR ASSEMBLY STROKE 60mm
19	N010205	1	外六角-M6x40-镀锌	SCREW M6x40 ZINC
20	N030007	4	平垫-6x12x1.6-镀锌	WASHER 6x12x1.6 ZINC
21	N030006	13	平垫-8x16x1.6-镀锌	WASHER 8x16x1.6 ZINC
22	N010342	1	轴肩螺栓 D10X70XM8	SHOULDER BOLT D10X70XM8
23	A040121	1	机头推杆安装支架	HEAD PUSH ROD MOUNTING BRACKET
24	N010006	8	外六角-M6x20-镀锌	SCREW M6x20 ZINC
25	N040001	4	弹垫-M6-镀锌	LOCK WASHER M6 ZINC
26	A020013	1	加宽脚踏板支架 518x60	SUPPORT
27	N020015	4	悬挂方螺母-M5-镀锌	NUT M5 ZINC
28	A030117	1	前防撞梁	FRONT ANTI COLLISION BEAM
29	N040013	12	弹垫-M8-镀锌	LOCK WASHER M8 ZINC
30	A040120	1	压力调节导轨	PRESSURE ADJUSTMENT RAIL

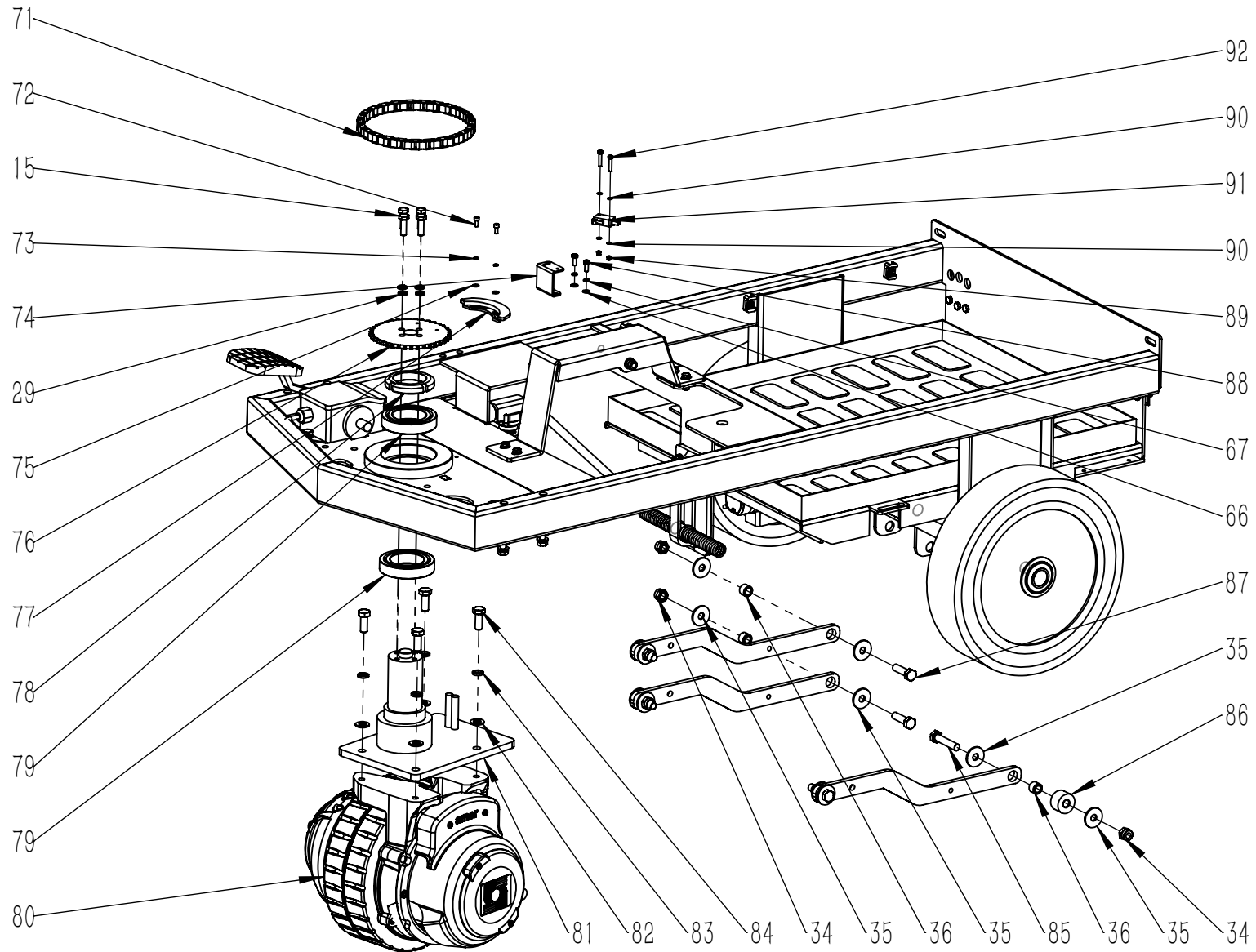




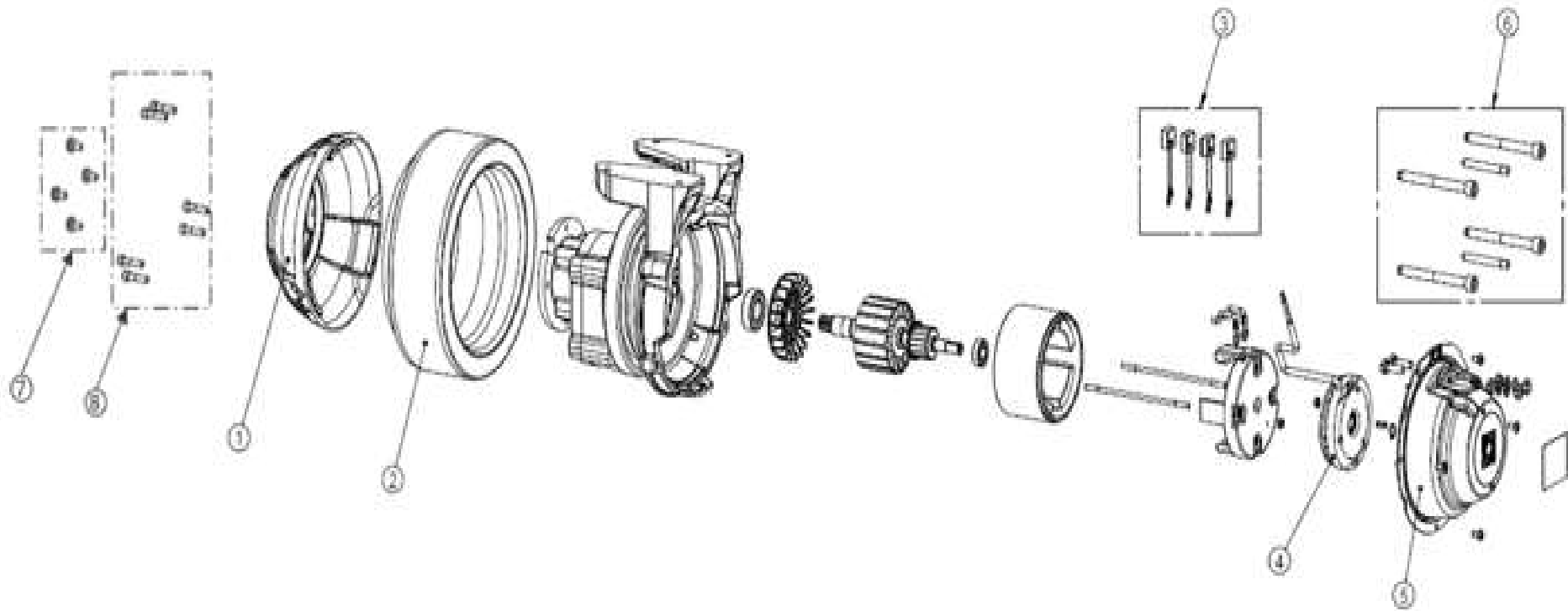
项目号 ITEM	零件号 P/N	数量 QTY	名称	DESCRIPTION
31	B020045	1	尼龙套 D10. 2XD20X20	NYLON SLEEVE D10. 2XD20X20
32	B020046	2	铜隔套 D10. 2XD25X6	COPPER SPACER D10. 2XD25X6
33	B070050	2	压簧 D20XD2. 5X84	COMPRESSION SPRING D20XD2. 5X84
34	N020002	6	自锁螺母-M10-镀锌	LOCK NUT M10 ZINC
35	N030041	12	平垫-10x30x2. 5-镀锌	WASHER 10x30x2. 5 ZINC
36	B020016	6	铜套 10x16x11. 5	BUSHING 10x16x11. 5
37	N010026	3	外六角-M10x40-镀锌	SCREW M10x40 ZINC
38	A040023	3	拉臂 366	ARM 366
39	N010216	4	沉头内六角-M8x25-镀锌	SCREW-M8x25-ZINC
40	C020030A	2	轮子 D300x70-YL	WHEEL D300x70
41	N020022	1	螺母-M6-镀锌	NUT M6 ZINC
42	C020458	2	脚轮盖 D52-YL	COVER D52-YL
43	B060069	2	平垫-8. 5x30x4-镀锌	WASHER 8. 5x30x4 ZINC
93	N020012	7	自锁螺母-M6-镀锌	LOCK NUT M6 ZINC
94	N030008	7	平垫-6x18x1. 6-镀锌	WASHER 6x18x1. 6 ZINC



项目号 ITEM	零件号 P/N	数量 QTY	名称	DESCRIPTION
44	B060120	1	扒头支架轴肩螺栓	SUPPORT SHOULDER BOLT
45	C020024	1	电池座 595x492	BATTERY BASE 595x492
46	B050056	1	垫片 D15xD23x2	WASHER D15xD23x2
47	N070019	1	轴承-6202ZZ-不锈钢	BEARING 6202ZZ
48	N020054	4	螺母-M8-镀黑锌	NUT M8 BLACK ZINC
49	N080019	1	卡簧 D35	CIRCLIP D35
50	N100006	2	吊环活节螺栓 M8x35	SWING BOLT M8x35
51	B070054	2	拉簧 2.5×19.5×165.5	SPRING 2.5×19.5×165.5
52	N010154	4	沉头内六角-M6x12-不锈钢	SCREW M6x12 A2
53	B050057	1	轴承座法兰	BEARING SUPPORT FLANGE
54	A050061	1	扒头支架连接板	SUPPORT CONNECTING PLATE
55	N020003	1	自锁螺母-M12x1.75-镀锌	LOCK NUT M12x1.75 ZINC
56	F050088.4	1	硅胶水管 D=12 d=8 L=400	SILICONE HOSE D=12 d=8 L=400
57	F020022	1	快速弯头-1/2-D=10-d=8	CONNECTOR 1/2 D=10 d=8
58	W020256	1	电磁阀组件2-T55-70BT	SOLENOID VALVE ASSEMBLY T55/70BT
59	F020019	2	外丝接头-1/2-3/8-不锈钢	CONNECTOR 1/2-3/8 A2
60	F010004	1	过滤器 78x36x60	FILTER 78x36x60
61	A020007	1	过滤器支架 65x35	SUPPORT
62	F010006	1	蝶形球阀-1/2-直接头 D=10	BALL VALVE 1/2 CONNECTION STRAIGHT D=10
63	F050088.5	1	硅胶水管 D=12 d=8 L=850	SILICONE HOSE D=12 d=8 L=850
64	A030116	1	底座架	BASE FRAME
65	E020005A	1	霍尔电子油门踏板	HALL ACCELERATOR
66	N030031	3	平垫-5x10x1-镀锌	WASHER 5x10x1 ZINC
67	N040007	3	弹垫-M5-镀锌	LOCK WASHER M5 ZINC
68	A050059	1	脚踏 T150	PEDAL T150
69	N010009	1	外六角-M5x25-镀锌	SCREW-M5x25-ZINC
70	C030006	1	脚踏垫 98x80	RUBBER PAD 98x80

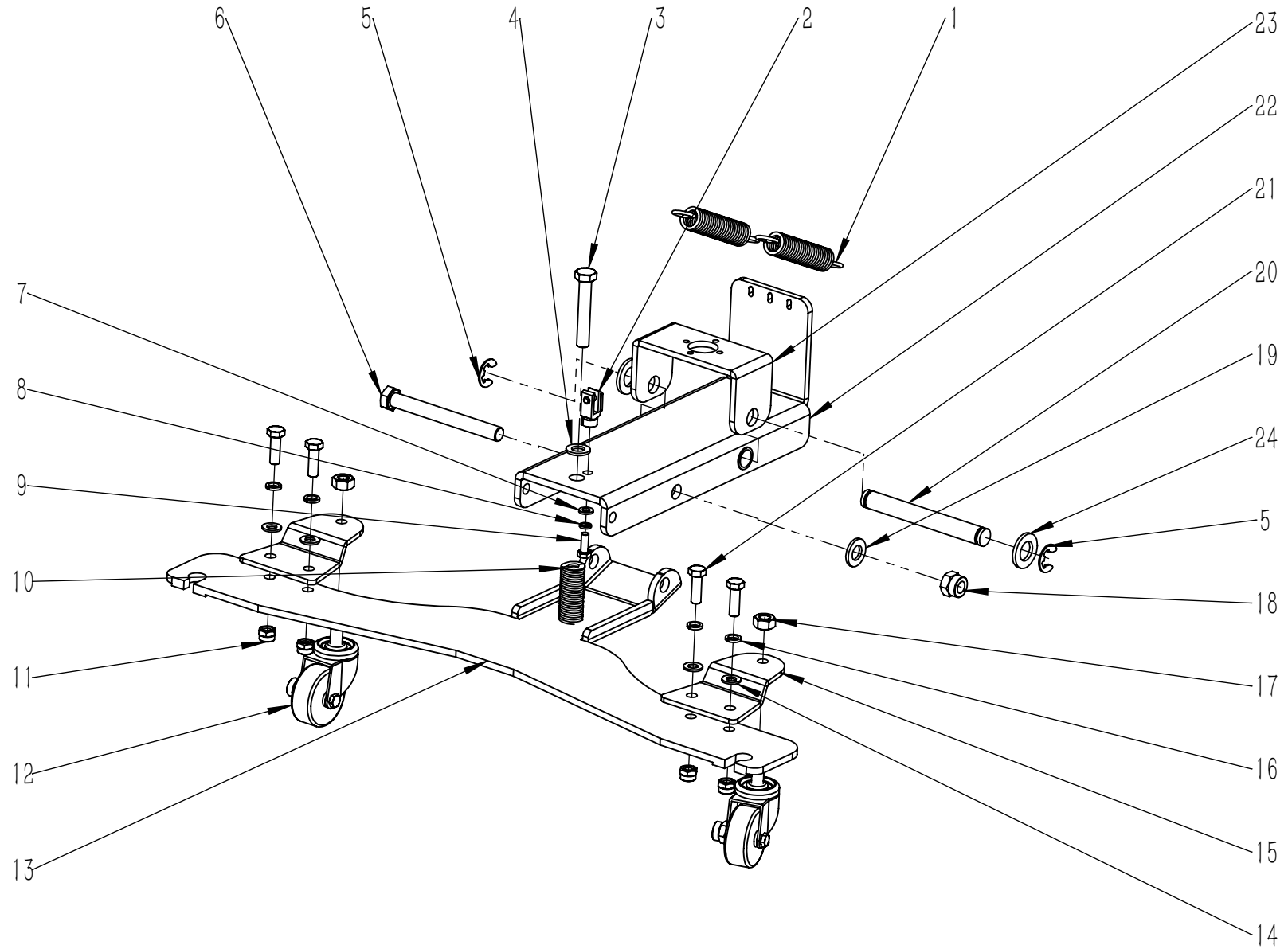


项目号 ITEM	零件号 P/N	数量 QTY	名称	DESCRIPTION
71	N100018	1	链条 06B-23/45	CHAIN 06B-23/45
72	N010199	2	内六角圆柱螺丝-HM4x10-不锈钢	SCREW HM4x10 A2
73	N040019	2	弹垫-M4-不锈钢	LOCK WASHER M4
74	A020036	1	微动开关支架	MICRO SWITCH BRACKET
75	N030053	2	平垫-4x9x1-不锈钢	WASHER 4x9x1 ZINC
76	B060149	1	转向大齿轮 T130	PINION T130
77	B050061	1	链轮开关 T130	CAM T130
78	N020059	1	四槽螺母 M50x1.5	NUT M50x1.5
79	N070006	2	轴承 6010	BEARING 6010
80	E040219	1	前驱电机 36V 800W	FRONT DRIVE MOTOR 36V 800W
81	B060184	1	电机定位轴	MOTOR POSITIONING SHAFT
82	N030004	4	平垫-10x20x2-镀锌	WASHER 10x20x2 ZINC
83	N040003	4	弹垫-M10-镀锌	LOCK WASHER M10 ZINC
84	N010060	4	外六角-M10x25-镀锌	SCREW M10x25 ZINC
85	N010083	1	外六角-M10x50-镀锌	SCREW M10x50 ZINC
86	B060053	1	垫圈 10.5x30x18.5	WASHER 10.5x30x18.5
87	N010081	2	外六角-M10x35-镀锌	SCREW M10x35 ZINC
88	N010024	2	外六角-M5x12-镀锌	SCREW M5x12 ZINC
89	N020045	2	自锁螺母-M3-不锈钢	LOCK NUT M3 A2
90	N030019	4	平垫-3x7x0.5-不锈钢	WASHER 3x7x0.5
91	W020262	1	防水微动开关组件-250V-16A-常开	MICROSWITCH ASSEMBLY 250V 16A NORMALLY SWITCH ON
92	N010027	2	外六角-M3x20-不锈钢	SCREW M3x20 A2

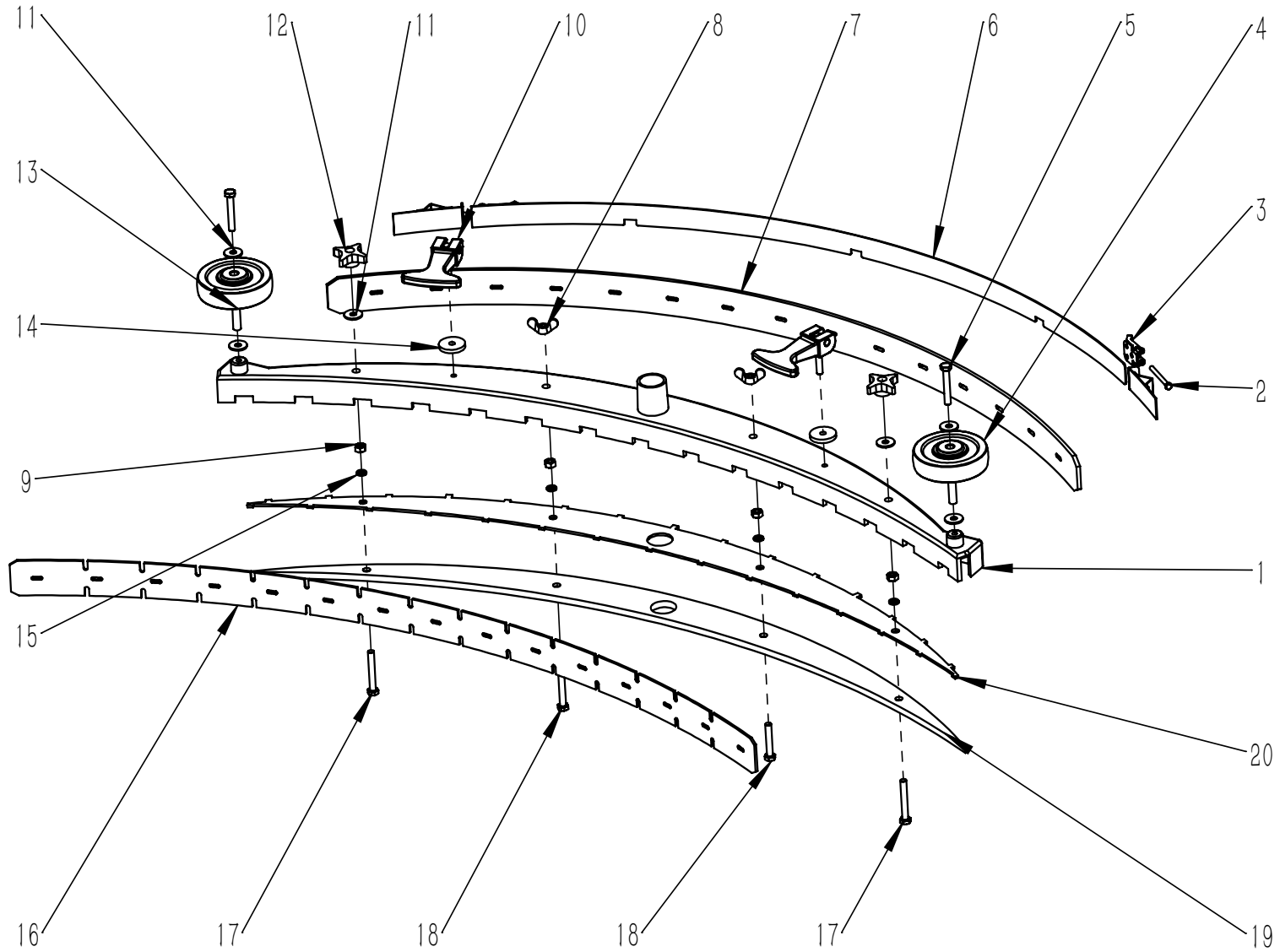


项目号 ITEM	零件号 P/N	名称	数量 QTY	DESCRIPTION
1	N110076	AMER 驱动电机轮毂 T150PRO	1	HUB T150PRO
2	N110077	红色轮毂电机轮胎 250X80 T150PRO	1	RED MOTORWHEEL TYRE 250X80 T150PRO
3	E040283	电机 MP100 T150PRO	1	MOTOR MP100 T150PRO
4	E040221	碳刷 T150PRO	1	BRUSH KIT (4 Pcs) T150PRO
5	C020409	盖板 H37 MTR11 T150PRO	1	BOARD COVER H37 MTR11 T150PRO
6	E020088	电磁刹车 36VDC 8Nm T150PRO	1	ELECTROBRAKE 36VDC 8Nm T150PRO
7	N050006	套筒 MTR11 X MP100 T150PRO	1	SLEEVE MTR11 X MP100 WITH SLOT T150PRO
8	N050007	轮胎脉冲器套件 T150PRO	1	TIRE PULLER KIT T150PRO

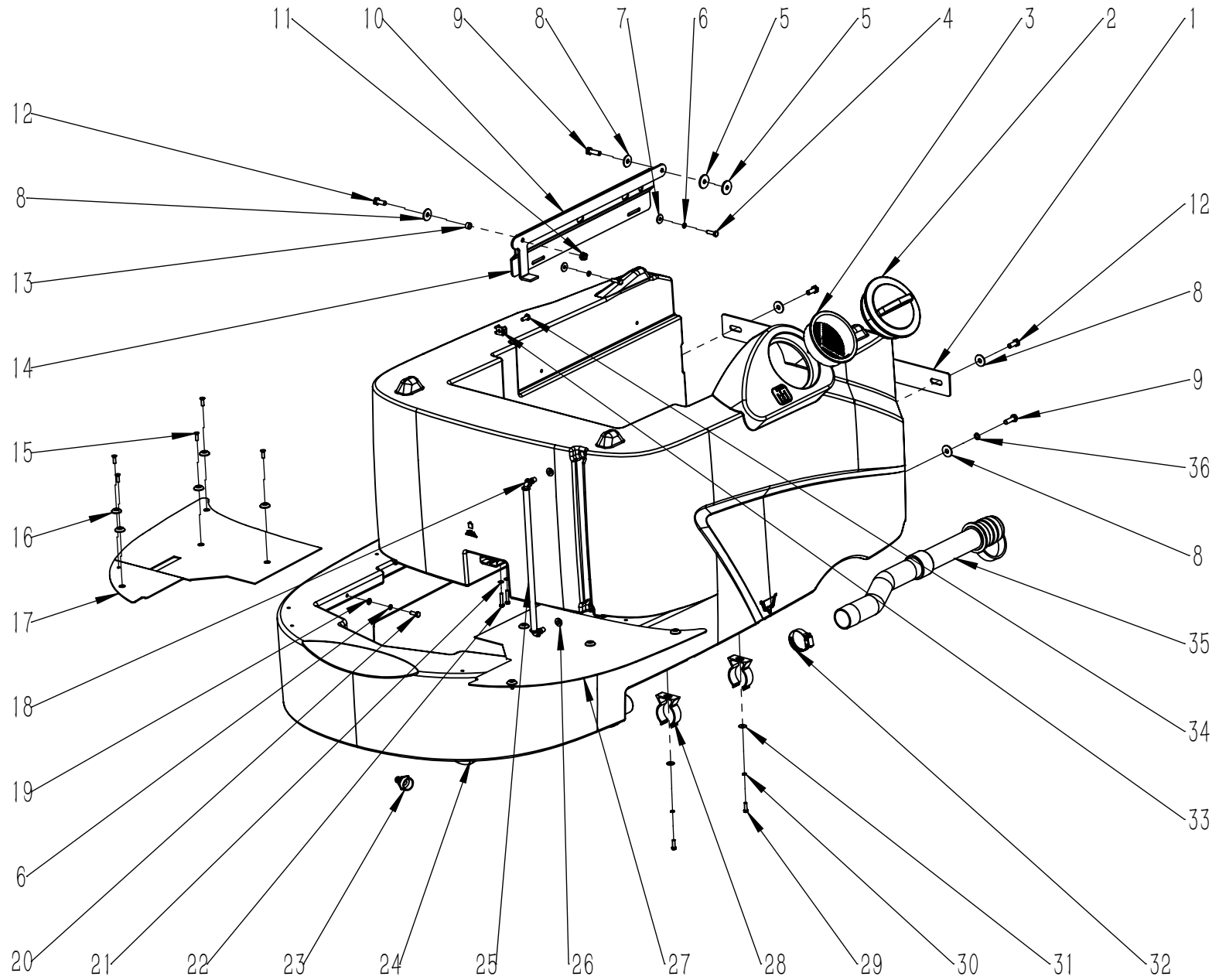




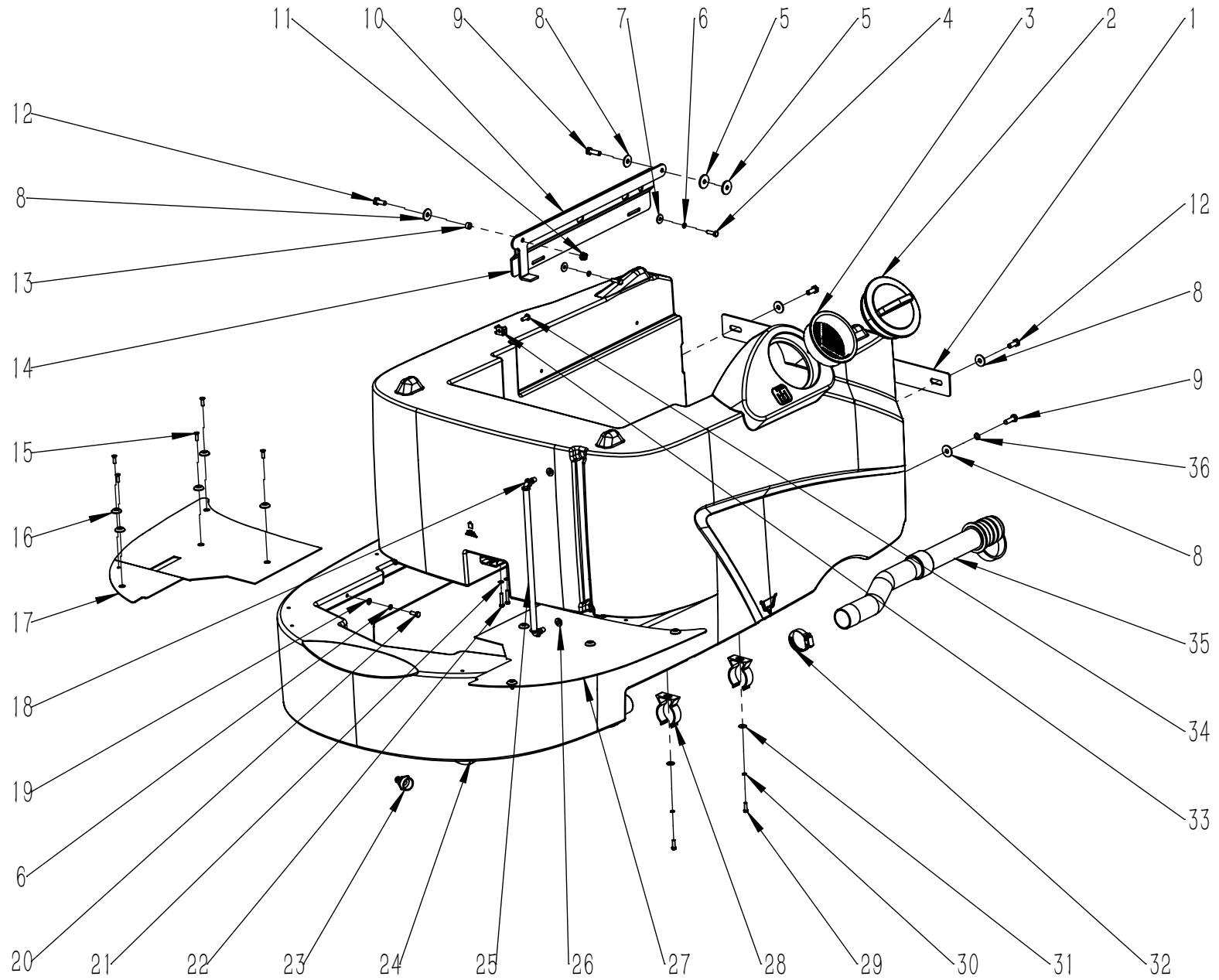
项目号 ITEM	零件号 P/N	数量 QTY	名称	DESCRIPTION
1	B070008	2	拉簧 2.8x20x109	SPRING 2.8x20x109
2	N060006	1	夹片式-Y型接头-Y-16	Y-CONNECTOR Y-16
3	N010089	1	外六角-M10x60-不锈钢-全牙	SCREW M10x60 A2 WHOLE TOOTH
4	N030004	1	平垫-10x20x2-镀锌	WASHER 10x20x2 ZINC
5	N080010	2	卡簧 D12	CIRCLIP Φ12
6	N010158	1	外六角 M12x110	SCREW M12x110 A2
7	N030024	1	平垫-6x12x1.6-不锈钢	WASHER 6x12x1.6 A2
8	N040011	1	弹垫-M6-不锈钢	LOCK WASHER M6 A2
9	N010182	1	外六角-M6x16-不锈钢	SCREW M6x16 A2
10	B070025	1	矩形弹簧-D10.5xD20x50-黄色	RECTANGULAR SPRING
11	N020024	4	自锁螺母-M8-不锈钢	LOCK NUT M8 A2
12	N110048	2	M10 螺杆万向轮Φ50	M10 SCREW UNIVERSAL WHEEL Φ50
13	A050055	1	扒头下支架 T150	SUPPORT T150
14	N030010	4	平垫-8x16x1.6-不锈钢	WASHER 8x16x1.6 A2
15	A030065	2	万向轮支架-T150-随摆	SUPPORT
16	N040017	4	弹垫-M8-不锈钢	LOCK WASHER M8
17	N020062	2	螺母-M10-不锈钢	NUT M4 A2
18	N020003	1	自锁螺母-M12x1.75-镀锌	LOCK NUT M12x1.75 ZINC
19	N030011	1	平垫-12x24x2.5-镀锌	WASHER 12x24x2.5 ZINC
20	B060100	1	转动轴 D15x124	AXIS OF ROTATION Φ15x124
21	N010094	4	外六角-M8x25-不锈钢	SCREW M8x25 A2
22	A050060	1	扒头上支架-T150-随摆	SUPPORT
23	A050061	1	扒头支架连接板	SUPPORT CONNECTING PLATE
24	N030033	2	平垫-16x30x3-不锈钢	WASHER 16x30x3 A2



项目号 ITEM	零件号 P/N	数量 QTY	名称	DESCRIPTION
1	D010047	1	扒头主体 黑色	SQUEEGEE BODY BLACK
2	N010146	2	外六角-M5x55-不锈钢	SCREW M5x55 A2
3	N080009	2	不锈钢搭扣 M5	HASP M5 A2
4	N110019	2	防撞轮 D100x29.5	WHEEL Φ100x29.5
5	N010144	2	外六角-M8x50-不锈钢	SCREW M8x50 A2
6	A030048	1	扒头后固定钢板 1250	BLADE 1250
7	C030033LTX	1	后橡皮刮条 1290x54x5	REAR SQUEEGE BLADE RUBBER LINATEX 1290x54x5
8	N020073	2	蝶形螺母-M8-不锈钢发黑	WING NUT M8 A2 BLACK
9	N020010	4	螺母-M8-不锈钢	NUT M8 A2
10	C020113	2	扒头快装把手 T150	QUICK INSTALL HANDLE T150
11	N030028	6	平垫-8x24x2-不锈钢	WASHER 8x24x2 A2
12	N100047	2	四星螺帽 M8 黄	NUT M8 (YELLOW)
13	B020027	2	防撞轮铜套 8x10x31	BUSHING 8x10x31
14	N030064	2	尼龙垫片 D35xD8x5	WASHER D35xD8x5 NYLON
15	N040017	4	弹垫-M8-不锈钢	LOCK WASHER M8
16	C030032LTX	1	前橡皮刮条 3x50x1217	FRONT SQUEEGE BLADE RUBBER LINATEX 3x50x1217
17	N010131	2	外六角-M8x55-不锈钢	SCREW M8x55 A2
18	N010050	2	外六角-M8x45-不锈钢	SCREW M8x45 A2
19	B050023	1	半月板 1090	PLATE 1090
20	A030047	1	刮条固定板 1090	FIXED PLATE 1090

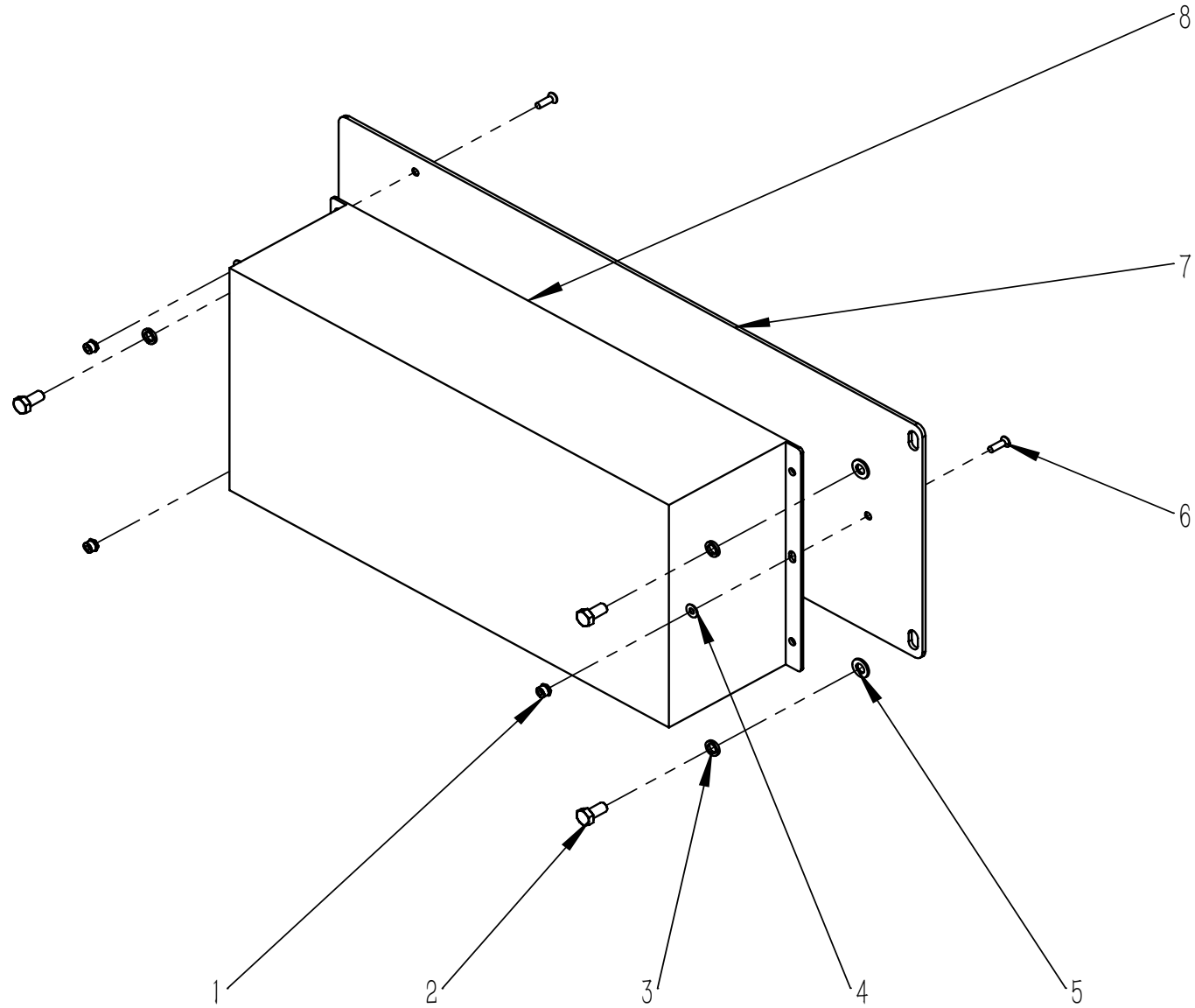


项目号 ITEM	零件号 P/N	数量 QTY	名称	DESCRIPTION
1	A020012	1	加宽支架 600x50	SUPPORT
2	C020005	1	清水箱注水口盖子 D115	THREADED COVER D115
3	C020006	1	清水箱注水口滤网 D110	FILTER D110
4	N010006	2	外六角-M6x20-镀锌	SCREW M6x20 ZINC
5	N030034	2	平垫-8x28x3-尼龙	WASHER 8x28x3 NYLON
6	N040001	4	弹垫-M6-镀锌	LOCK WASHER M6 ZINC
7	N030077	2	平垫 6x18x1.6 镀黑锌	WASHER 6x18x1.6 BLACK ZINC
8	N030027	6	平垫-8x24x2-镀锌	WASHER 8x24x2 ZINC
9	N010007	3	外六角-M8x25-镀锌	SCREW M8x25 ZINC
10	A020011	1	加长支撑杆 500x95	PROP
11	N020001	1	自锁螺母-M8-镀锌	LOCK NUT M8 ZINC
12	N010034	3	外六角-M8x20-镀锌	SCREW M8x20 ZINC
13	B020011	1	铜套 8x12x6.5	BUSHING 8x12x6.5
14	A020010	1	加长侧支架 450x92	SUPPORT
15	N010230	9	沉头十字-M5x16-镀黑锌	SCREW M5x16 BLACK ZINC PLATING
16	C020028	9	异形垫片 D5	WASHER D5
17	A050030-A	1	右脚垫 R480-A	BOTTOM PLATE RIGHT R480-A
18	F020001	2	快速接头 D(8-6)x30	CONNECTOR $\Phi$ (8-6)x30
19	N030007	2	平垫-6x12x1.6-镀锌	WASHER 6x12x1.6 ZINC
20	N010005	2	外六角-M6x16-镀锌	SCREW M6x16 ZINC
21	N030031	2	平垫-5x10x1-镀锌	WASHER 5x10x1 ZINC
22	N010362	2	内六角圆柱头-M5x25-镀锌	SCREW M5x25 ZINC
23	F020014	1	快速接头-3/4-D=12-d=10	CONNECTOR 3/4 D=12 d=10
24	C010014	1	清水箱 T150	SOLUTION TANK T150
25	F050042.1	1	PU水管 D=12 d=8 L=320	PU WATER PIPE D=12 d=8 L=320
26	C030013	2	密封垫 D8	GASKET D8
27	A050031-A	1	左脚垫 R480-A	BOTTOM PLATE LEFT R480-A
28	B060103	2	钢管托 D43	PIPE HOLDER D43
29	N010029	2	外六角-M5x16-不锈钢	SCREW M5x16 A2
30	N040023	2	弹垫-M5-不锈钢	LOCK WASHER M5

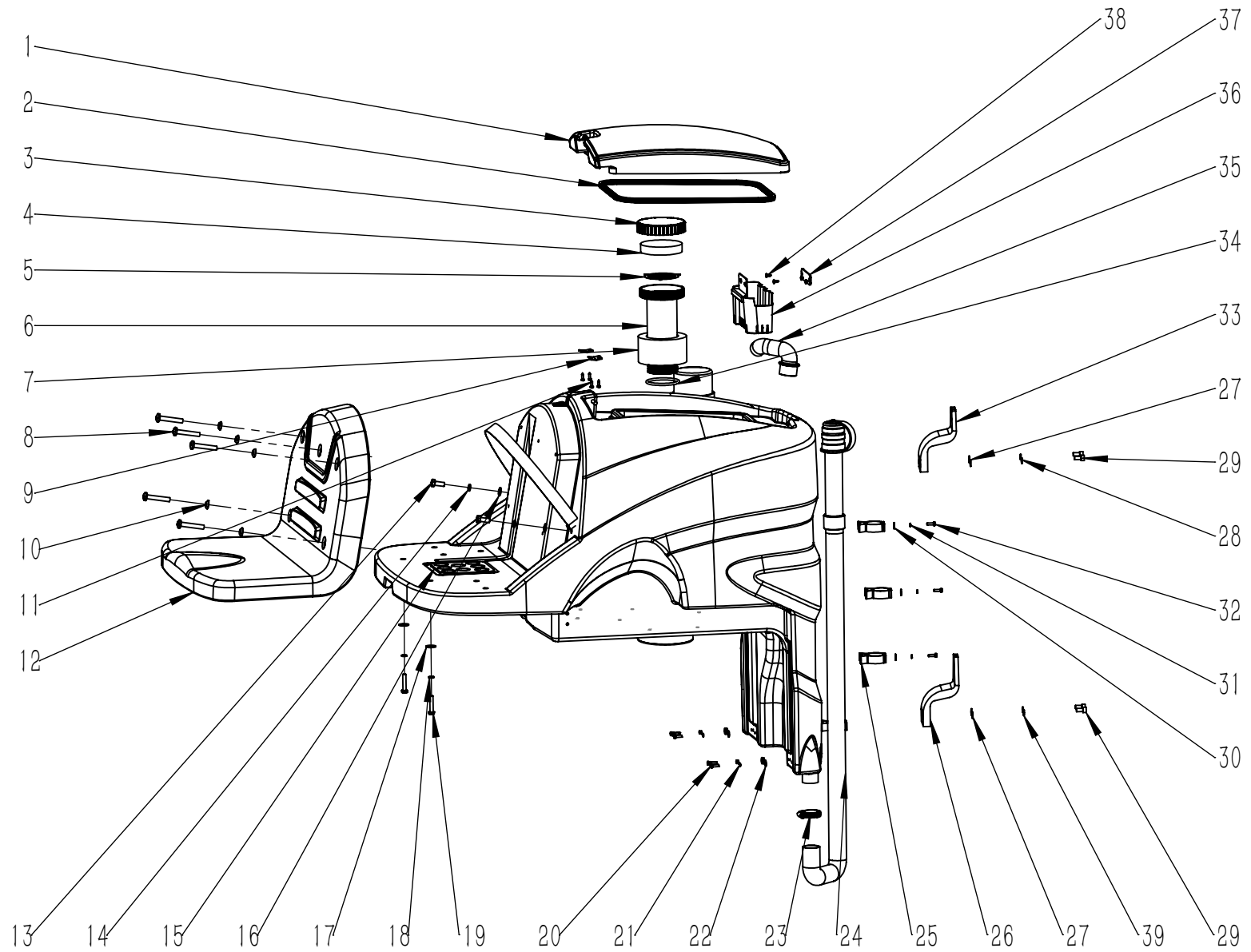


项目号 ITEM	零件号 P/N	数量 QTY	名称	DESCRIPTION
31	N030040	2	平垫-5x15x1.2-不锈钢	WASHER 5x15x1.2
32	F050006	1	卡箍 D33-57	SCREW CLAMP D33-57
33	N090002	1	扎带固定座 23x16	SUPPORT 23x1
34	N010112	1	十字盘头-M5x16-不锈钢	SCREW M5x16 A2
35	F060014	1	排水管 D. 38x510	DRAINAGE PIPE D. 38x510
36	N040013	2	弹垫-M8-镀锌	LOCK WASHER M8 ZINC

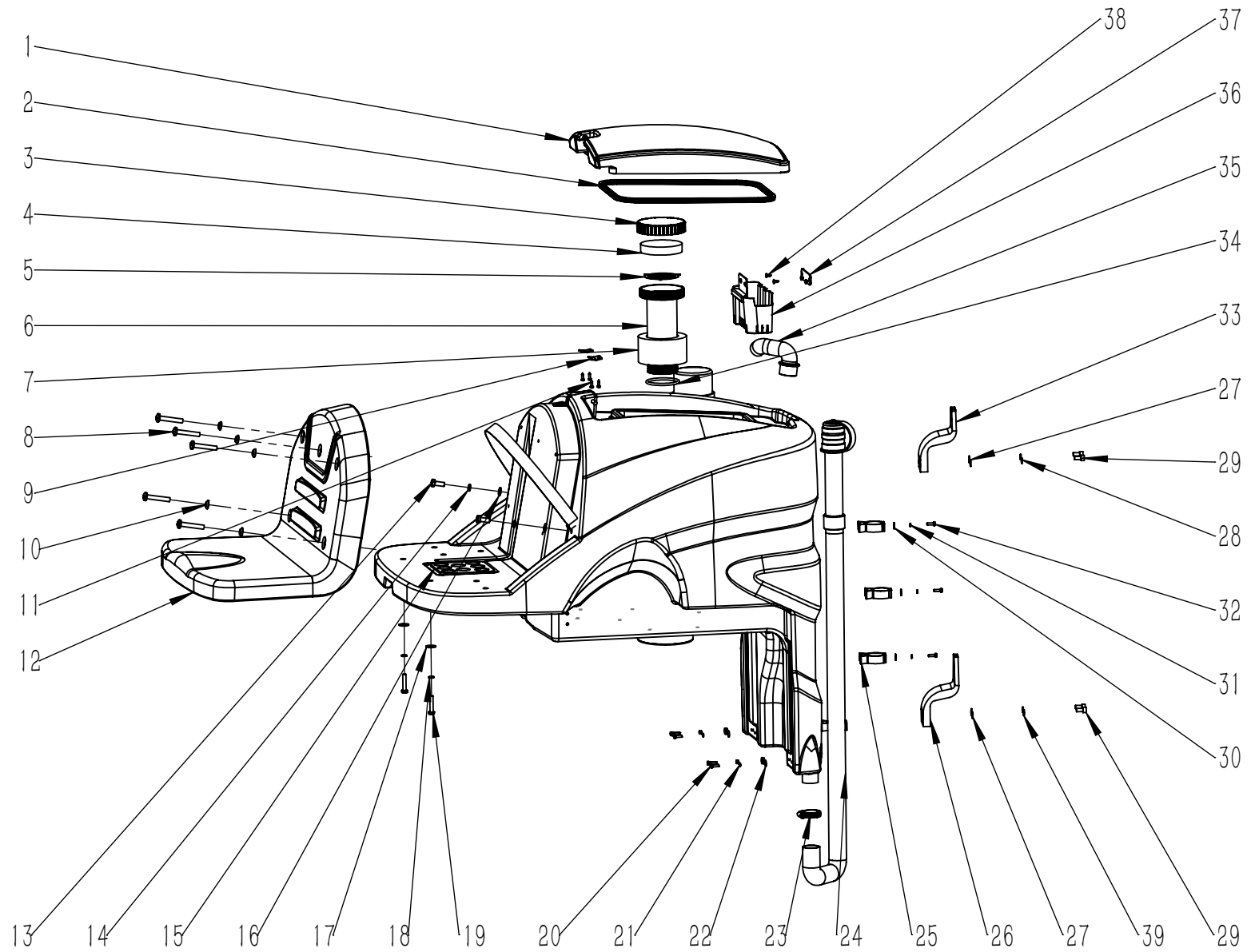




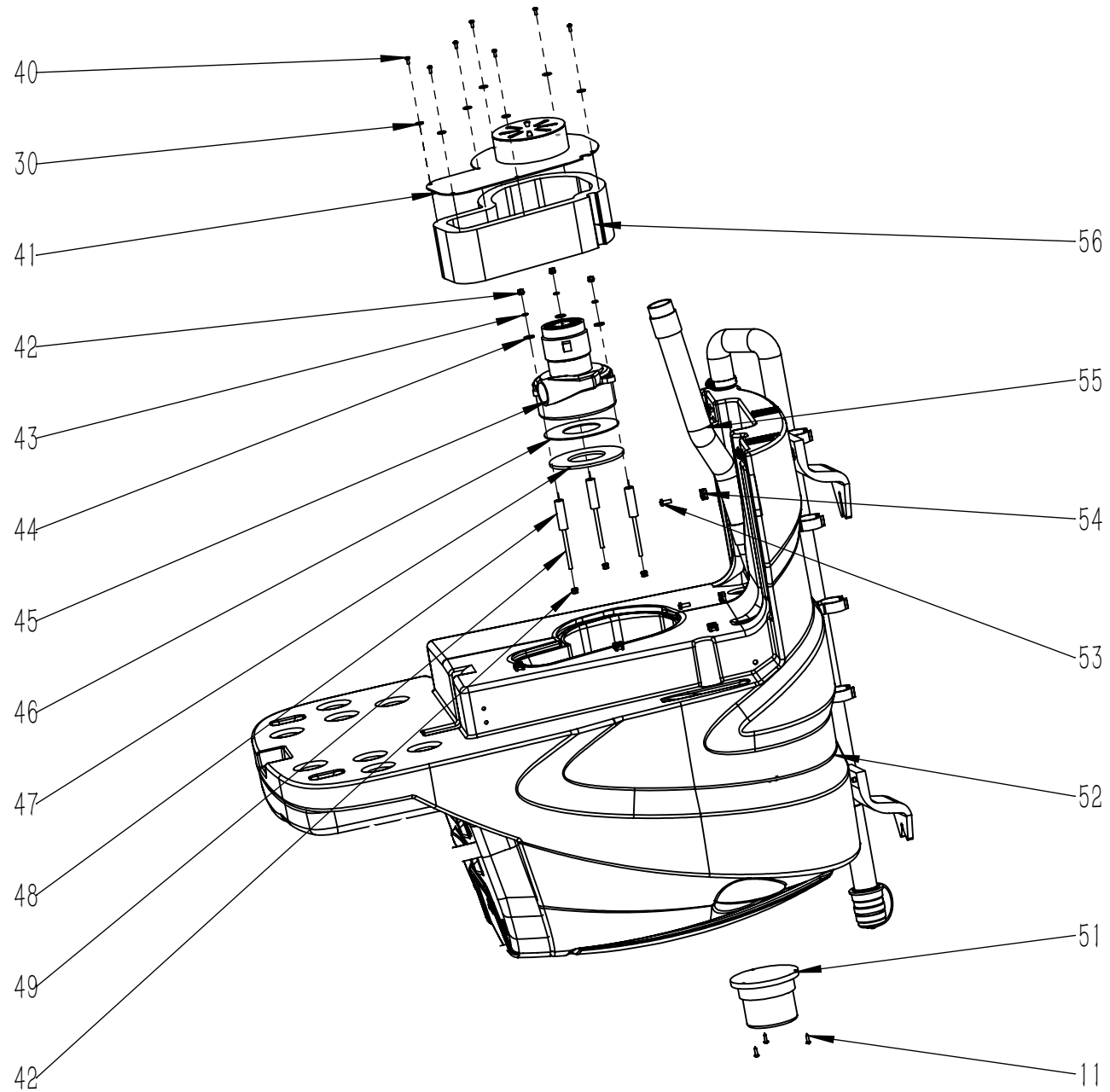
项目号 ITEM	零件号 P/N	数量 QTY	名称	DESCRIPTION
1	N020045	3	自锁螺母-M3-不锈钢	LOCK NUT M3 A2
2	N010048	3	外六角-M5x10-镀锌	SCREW M5x10 ZINC
3	N040007	3	弹垫-M5-镀锌	LOCK WASHER M5 ZINC
4	N030019	3	平垫-3x7x0.5-不锈钢	WASHER 3x7x0.5
5	N030031	3	平垫-5x10x1-镀锌	WASHER 5x10x1 ZINC
6	N010150	3	沉头十字螺栓-M3x10-不锈钢	SCREW M3x10 A2
7	A050120	1	内置充电器安装板 T150	CHARGER MOUNTING BRACKET T150
8	E040236	1	充电器国标分体式组件 36V 23A	CHARGER SB SPLIT TYPE ASSEMBLY
	E040236-A	1	充电器美标分体式组件 36V 23A	CHARGER ANSI SPLIT TYPE ASSEMBLY
	E040236-B	1	充电器欧标分体式组件 36V 23A	CHARGER EN SPLIT TYPE ASSEMBLY
	E040236-C	1	充电器英标分体式组件 36V 23A	CHARGER BS SPLIT TYPE ASSEMBLY
	E040236-D	1	充电器澳标分体式组件 36V 23A	CHARGER AS SPLIT TYPE ASSEMBLY



项目号 ITEM	零件号 P/N	数量 QTY	名称	DESCRIPTION
1	C010003	1	污水箱盖板	RECOVERY TANK COVER
2	N090010.1	1	密封胶条 19.5x9.5x9 L=1280	RUBBER 19.5x9.5x9L=1280
3	C020019	1	吸水口盖子 D118x24	COVER D118x24
4	F040002	1	吸水口消音海绵 D103x20	SPONGE D103x20
5	A030063	1	吸水口挡板	BAFFLE
6	C020018	1	吸水口主体 D74x210	SUCTION BODY D74x210
7	F040004	1	浮球 D80x64	FLOATER D80x64
8	N010172	5	圆头十字-M6x20-镀黑锌	SCREW M6x20 BLACK ZINC
9	A010001	2	箱盖固定板 34x30	PLAQUE
10	C020028	5	异形垫片 D5	WASHER D5
11	N010052	7	圆头十字自攻螺丝-M4.2x16-不锈钢	SELF TAPPING SCREW M4.2x16 A2
12	C010018	1	坐垫 T150	SEAT T150
13	N010060	2	外六角-M10x25-镀锌	SCREW M10x25 ZINC
14	N040003	2	弹垫-M10-镀锌	LOCK WASHER M10 ZINC
15	E020007	2	压力开关-150x135x5-常开	PRESSURE SWITCH 150x135x5 N.O.
16	N030004	2	平垫-10x20x2-镀锌	WASHER 10x20x2 ZINC
17	N030027	2	平垫-8x24x2-镀锌	WASHER 8x24x2 ZINC
18	N040013	2	弹垫-M8-镀锌	LOCK WASHER M8 ZINC
19	N010043	2	外六角-M8x40-镀锌	SCREW M8x40 ZINC
20	N010025	6	外六角-M5x16-镀锌	SCREW M5x16 ZINC
21	N040007	6	弹垫-M5-镀锌	LOCK WASHER M5 ZINC
22	N030013	6	平垫-5x15x1.2-镀锌	WASHER 5x15x1.2 ZINC
23	F050006	1	卡箍 D33-57	SCREW CLAMP D33-57
24	F060015	1	排污管 D38x1200	DRAINAGE PIPE D38x1200
25	C020265	4	加强管托 D43	REINFORCED TUBE SUPPORT D43
26	C020115	1	扒头下挂钩 T150	SQUEEGEE UNDER HOOK T150
27	N030076	4	平垫 不锈钢发黑	WASHER A2 BLACK
28	N040017	2	弹垫-M8-不锈钢	LOCK WASHER M8
29	N010346	4	内六角圆柱头 不锈钢发黑	SCREW A2 BLACK
30	N030040	11	平垫-5x15x1.2-不锈钢	WASHER 5x15x1.2

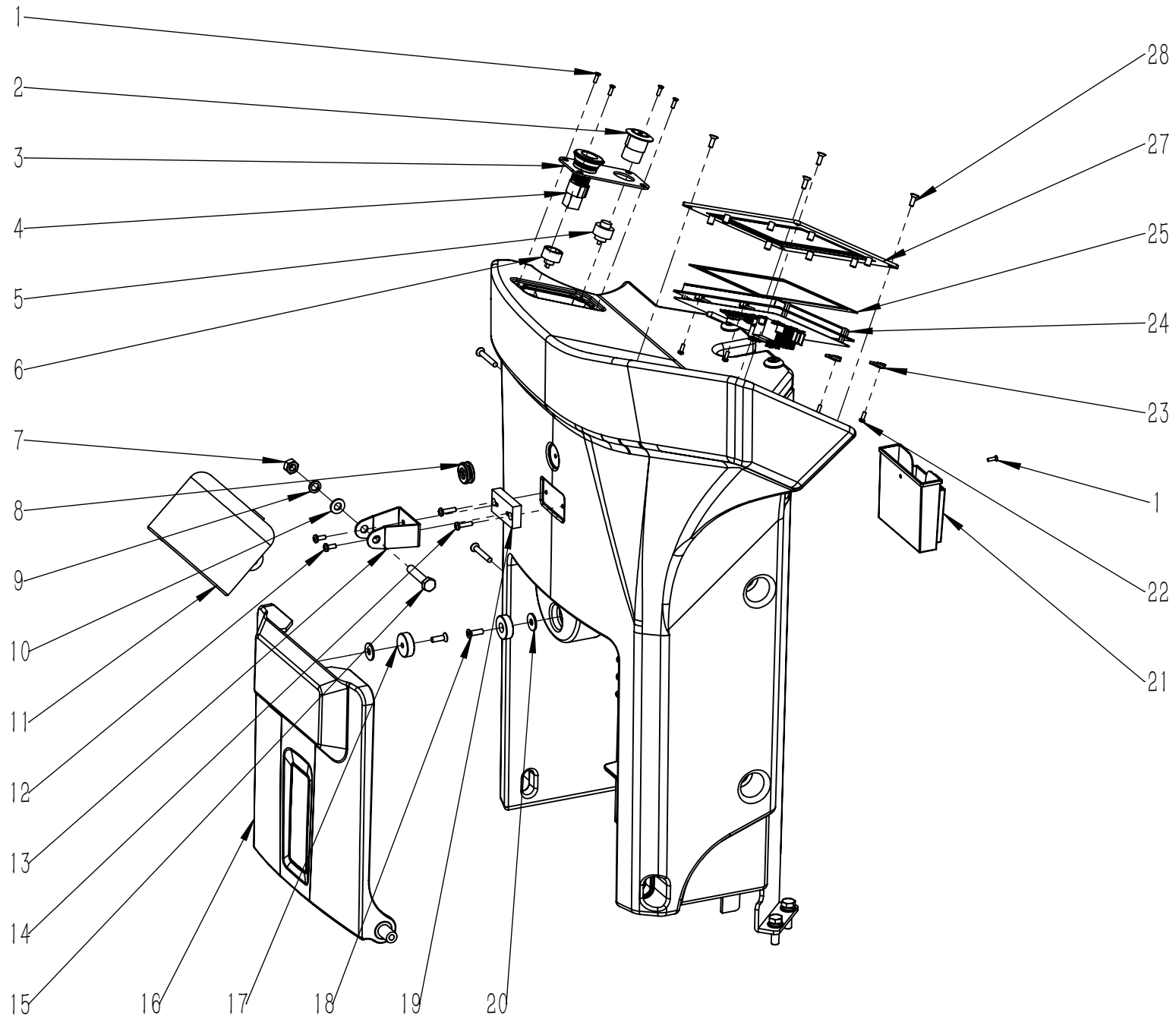


项目号 ITEM	零件号 P/N	数量 QTY	名称	DESCRIPTION
31	N040023	4	弹垫-M5-不锈钢	LOCK WASHER M5
32	N010029	4	外六角-M5x16-不锈钢	SCREW M5x16 A2
33	C020114	1	扒头上挂钩 T150	SQUEEGEE HOOK UP T150
34	N090042	1	O型密封圈 内径 D67x 线径 D6	O RING D67xD6
35	C020362	1	污水弯管 ABS	SEWAGE ELBOW ABS
36	C020087	1	一级过滤器 T130	PRIMARY FILTER T130
37	A040107	1	过滤篮固定座	FILTER BASKET HOLDER
38	N010097	2	沉头十字自攻螺栓-M4.2x13-不锈钢	SELF TAPPING SCREW M4.2x13 A2
39	N040032	2	弹垫-M8-不锈钢发黑	LOCK WASHER BLACK A2

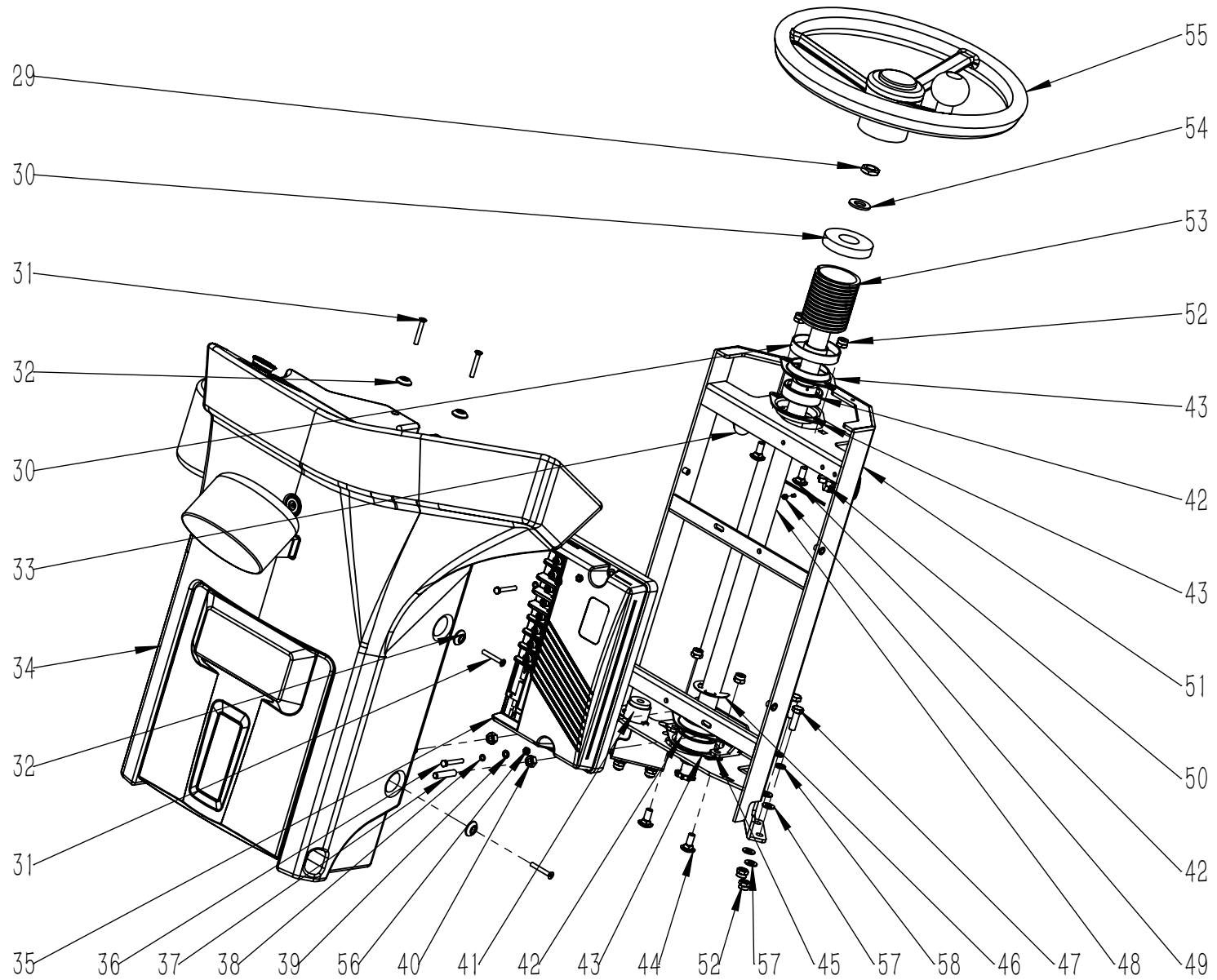


项目号 ITEM	零件号 P/N	数量 QTY	名称	DESCRIPTION
40	N010225	7	盘头十字-M4x10-不锈钢	SELF TAPPING SCREW M4x10 A2
41	A040086	1	消音盖板 T130	MUFFLER COVER T130
42	N020012	6	自锁螺母-M6-镀锌	LOCK NUT M6 ZINC
43	N040001	3	弹垫-M6-镀锌	LOCK WASHER M6 ZINC
44	N030008	3	平垫-6x18x1.6-镀锌	WASHER 6x18x1.6 ZINC
45	W020288	1	吸水电机组件-36V-738W-116513-13	VACUUM MOTOR ASSEMBLY 36V 738W 116513-13
46	F040005	1	背胶-D(140-70)-3M	3M ADHESIVES GUM D (140-70)
47	F040001	1	吸水电机消音垫 D140x5	SPONGE D140x5
48	B050046	3	支撑套管 78	SLEEVING 78
49	N100001	3	螺杆 M6x120	SCREW M6x120mm
51	W020281	1	警示灯组件 T150	WARNING LIGHT ASSEMBLY T150
52	C010015	1	污水箱 T150	RECOVERY TANK T150
53	N010112	6	十字盘头-M5x16-不锈钢	SCREW M5x16 A2
54	N090002	6	扎带固定座 23x16	SUPPORT 23x1
55	F060012	1	吸污管 D. 38x800	SUCTION HOSE D. 38x800
56	C020086	1	隔音棉 T130	SOUNDPROOF COTTON T130

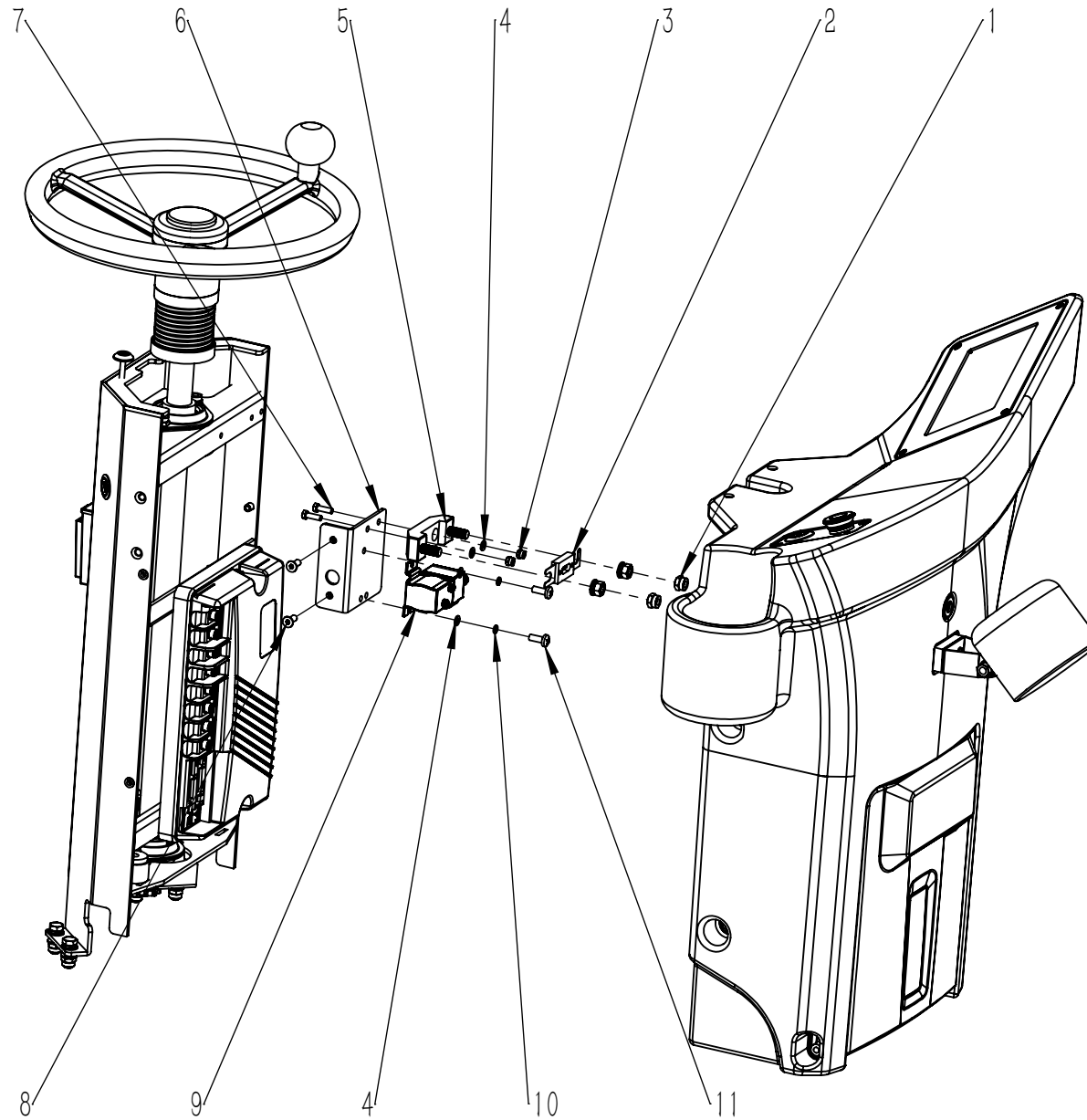




项目号 ITEM	零件号 P/N	数量 QTY	名称	DESCRIPTION
1	N010227	5	沉头十字-M3x10-8.8 镀黑锌	SUNK CROSS SCREW M3x10 8.8 BLACK ZINC
2	E020084	1	自复位按键	SELF RESET BUTTON
3	B050077	1	电源开关安装板	POWER SWITCH MOUNTING PLATE
4	E020086A	1	急停开关	EMERGENCY STOP SWITCH
5	E020085	1	自复位按键接线座	SELF RESET BUTTON TERMINAL BLOCK
6	E020087A	1	急停开关接线座	EMERGENCY STOP SWITCH TERMINAL BLOCK
7	N020054	1	螺母-M8-镀黑锌	NUT M8 BLACK ZINC
8	E080123	1	护线套-内径 16-卡槽 5mm	WIRE PROTECTION SLEEVE-INNER DIAMETER 16 CARD SLOT 5MM
9	N040031	1	弹垫-M8-镀黑锌	LOCK WASHER BLACK ZINC
10	N030081	1	平垫-8x16x1.6-镀黑锌	WASHER 8x16x1.6 BLACK ZINC
11	W020301	1	蓝警示灯组件 T150	BLUE WARNING LIGHT ASSEMBLY T150
12	N010070	2	圆头十字-M4x10-不锈钢	SCREW M4x10 A2
13	A030092	1	警示灯支架 T150	WARNING LIGHT BRACKET T150
14	N010164	2	十字盘头机钉-M4x16-不锈钢	SELF TAPPING SCREW M4x16 A2
15	N010173	1	外六角-M8x40-镀黑锌	SCREW M8x40 BLACK ZINC
16	C010016	1	转向器前挡板 T150	DOOR T150
	E050111	1	前罩灯-36V-115×44×22	HEADLIGHT 36V (115x44x22)
17	N060007	2	磁铁-D25xD5x8-17KG	MAGNET D25xD5x8-17KG
18	N010134	2	沉头十字螺栓-M5x16-不锈钢	SCREW M5x16 A2
19	A060032	1	探照灯固定座-48×25×10-T150	SEARCHLIGHT FIXTURE-48x25x10 T150
20	N030022	2	平垫-6x18x1.6-不锈钢	WASHER 6x18x1.6 A2
21	C020079	1	手机盒 T130	MOBILE PHONE BOX T130
22	N010257	4	十字盘头-M3x8-不锈钢	SCREW M3x8 A2
23	B050076	4	液晶屏压板	LCD SCREEN PRESSURE PLATE
24	W020437	1	控制面板组件-大能-T150PRO-TVX	CONTROL PANEL ASSEMBLY DALA T150PRO TVX
25	F040016	1	硅胶垫 168×103×1	SILICONE PAD 168×103×1
27	B050075	1	面板安装板	PANEL MOUNTING PLATE
28	N010299	4	沉头十字螺钉-M4x12-不锈钢发黑	SCREW-M4x12-A2 BLACK



项目号 ITEM	零件号 P/N	数量 QTY	名称	DESCRIPTION
29	N020035	1	薄螺母-M14-镀锌	NUT M14 ZINC
30	N090005	2	端盖 D (65-27) x12	COLLAR D (65-27) x12
31	N010232	6	沉头十字-M5x35-镀黑锌	SCREW M5x35 BLACK ZINC PLATING
32	C020028	6	异形垫片 D5	WASHER D5
33	W020284	1	喇叭按钮组件 TS1300	HORN BUTTON ASSEMBLY TS1300
34	C010151	1	前转向罩-150PRO-绿色	COVER T150PRO GREEN
35	W020407	1	控制器组件-大能-T150PRO	CONTROLLER ASSEMBLY DALA T150PRO
36	N010229	2	外六角-M5x35-不锈钢	SCREW M5x35 A2
37	N010140	2	内六角紧定螺钉-M8x40-不锈钢	SCREW M8x40 A2
38	N040023	2	弹垫-M5-不锈钢	LOCK WASHER M5
39	N030016	2	平垫-5x10x1-不锈钢	WASHER 5x10x1
40	N020010	2	螺母-M8-不锈钢	NUT M8 A2
41	W020302	1	蜂鸣器组件 LZQ-2725A	BUZZER ASSEMBLY LZQ-2725A
42	N070005	2	轴承-SBPFL-205	BEARING SBPFL 205
43	N070004	4	轴承座-SBPFL-205	BEARING SUPPORT SBPFL 205
44	N010091	4	圆头方颈螺栓-M8x20-镀锌	SCREW M8x20 ZINC
45	A020020	1	轴承座固定支座 76	SUPPORT
46	N080020	1	卡簧 D24	CIRCLIP D24
47	N010007	4	外六角-M8x25-镀锌	SCREW M8x25 ZINC
48	B060056A	1	转向轴 D25x694	STEERING SHAFT D25x694
49	N020019	1	自锁螺母-M3-镀锌	LOCK NUT M3 ZINC
50	E020057	1	双 USB 接口带灯-15W-T130	DUAL USB INTERFACE WITH LIGHT 15W T130
51	A020069	1	转向器支架	SUPPORT
52	N020001	8	自锁螺母-M8-镀锌	LOCK NUT M8 ZINC
53	N090097	1	波纹管轴套 D50x70	SPACER D50x70
54	N030055	1	平垫-14X28X2.5-镀锌	WASHER 14X28X2.5 ZINC
55	N110036	1	方向盘-带助力球-T150	STEERING WHEEL BOOSTER BALL T150
56	E080150A	1	线束 T150PRO	WIRE HARNESS T150PRO
57	N030006	8	平垫-8x16x1.6-镀锌	WASHER 8x16x1.6 ZINC
58	N040013	4	弹垫-M8-镀锌	LOCK WASHER M8 ZINC



项目号 ITEM	零件号 P/N	数量 QTY	名称	DESCRIPTION
1	N020024	2	自锁螺母-M8-不锈钢	LOCK NUT M8 A2
2	E050005	2	保险 80A	FUSE 80A
3	N020016	2	自锁螺母-M5-镀锌	LOCK NUT M5 ZINC
4	N030031	4	平垫-5x10x1-镀锌	WASHER 5x10x1 ZINC
5	E050004	1	保险座 80A	FUSE HOLDER 80A
6	A060039	1	安装支架 80X90	MOUNTING BRACKETS 80X90
7	N010025	2	外六角-M5x16-镀锌	SCREW M5x16 ZINC
8	N010365	2	沉头内六角-M6X16-镀黑锌	SCREW M6X16 BLACK ZINE
9	E050134	1	直流接触器-36V-80A	DC CONTACTOR 36V 80A
10	N040007	2	弹垫-M5-镀锌	LOCK WASHER M5 ZINC
11	N010073	2	圆头十字螺丝-M5x16-镀锌	SCREW M5x16 ZINC

项目号 ITEM	零件号 P/N	数量 QTY	名称	DESCRIPTION
1	M020041	1	木托盘	WOOD PALLET
2	M020042	1	下坡板 T150PRO	DOWNHILL BOARD T150PRO
3	M010159	1	纸箱上盖 T150PRO	CARTON BOX COVER T150PRO
4	M010161	1	纸箱-T150PRO-TVX	CARTON BOX T150PRO TVX
5	P010012	1	测试报告	TEST REPORT
6	P010004	1	保修卡	WARRANTY CARD
7	C040367	1	TVX 前标-灰底银拉丝	TVX FRONT LABEL-GRAY BACKGROUND SILVER BRUSHED
8	C040440	1	左侧标-T150PRO-TVX	LEFT SIDE LABEL T150PRO TVX
9	C040441	1	控制面板标贴-T150PRO-TVX	CONTROL PANEL LABEL T150PRO-TVX
10	C040442	1	右侧标-T150PRO-TVX	RIGHT SIDE LABEL T150PRO TVX
11	C030030	1	刷盘防溅条-橡胶-85x860	RUBBER SKIRT 85x860
12	C030031	1	刷盘防溅条-橡胶-85x770	RUBBER SKIRT 85x770
13	M010010	1	纸盒-1200x330x120-扒头 1150	1150 SQUEEGEE CARTON BOX 1200x330x120
14	M020043	6	木条 T150PRO	BATTEN T150PRO