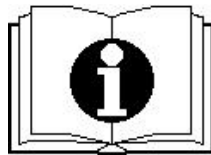




— SCHEMATIC DRAWINGS —

装配示意图



驾驶式洗地机 T90/55R+

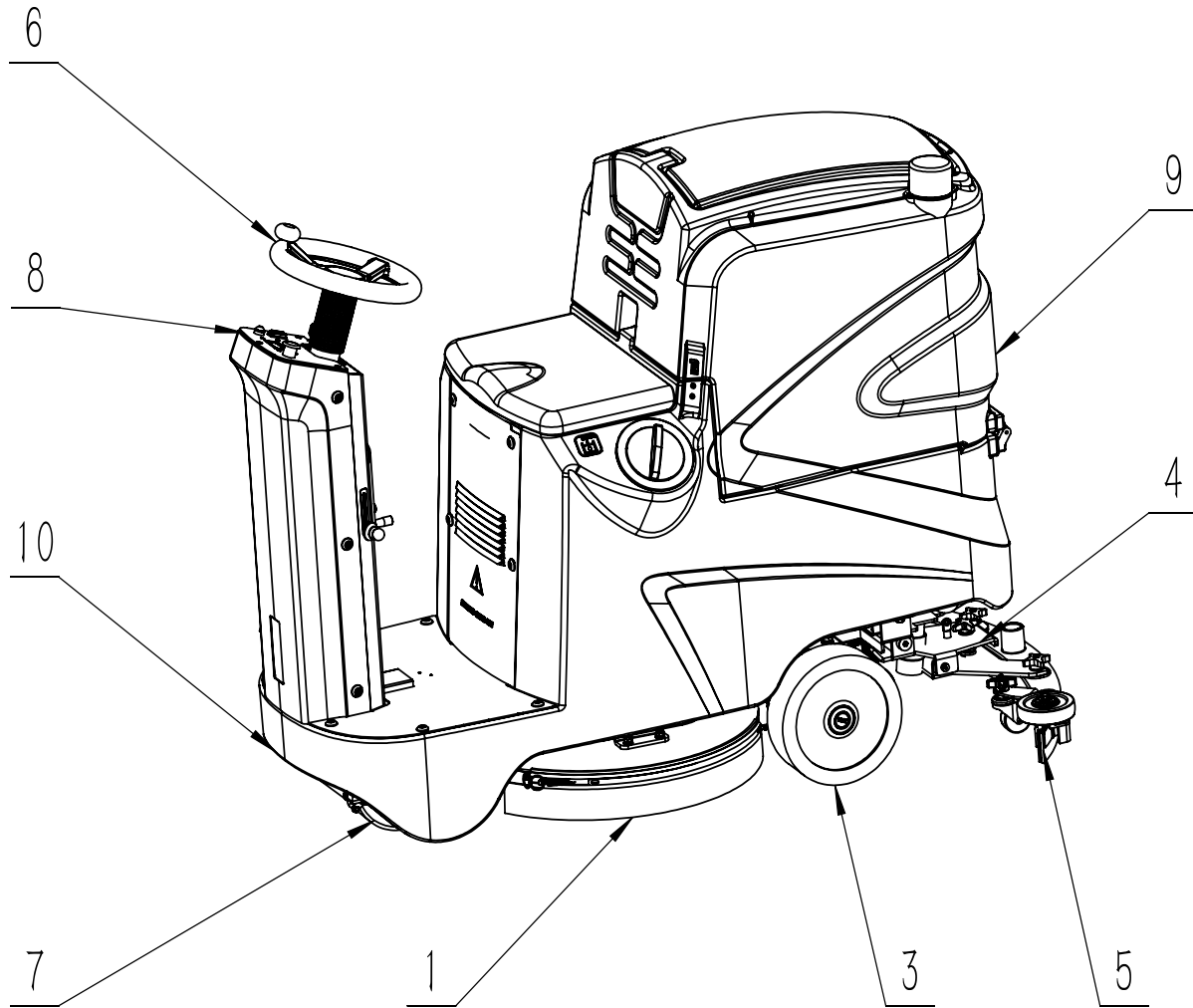
Scrubber Dryer T90/55R+

Issued in Aug. 2023

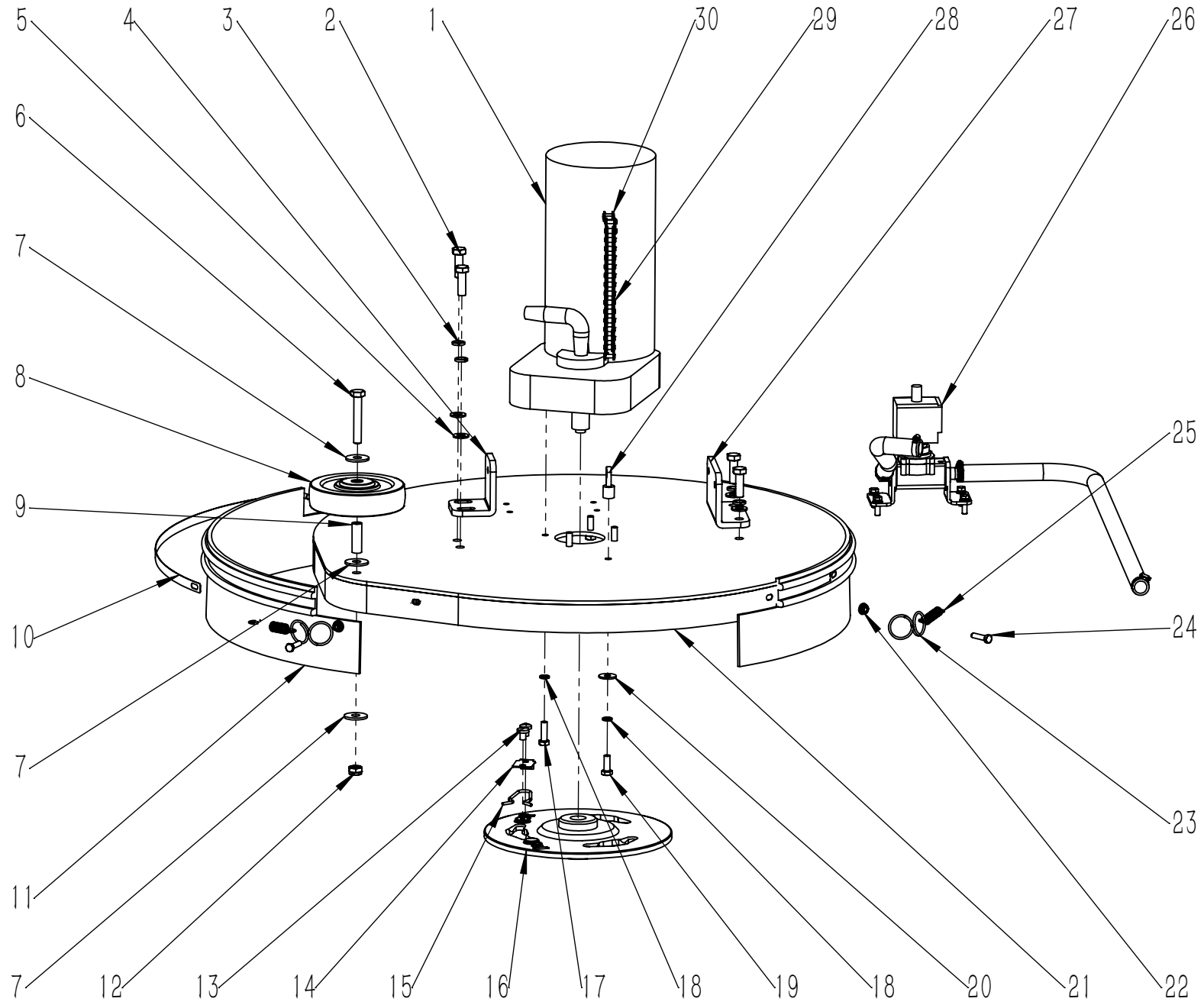
Version: V10



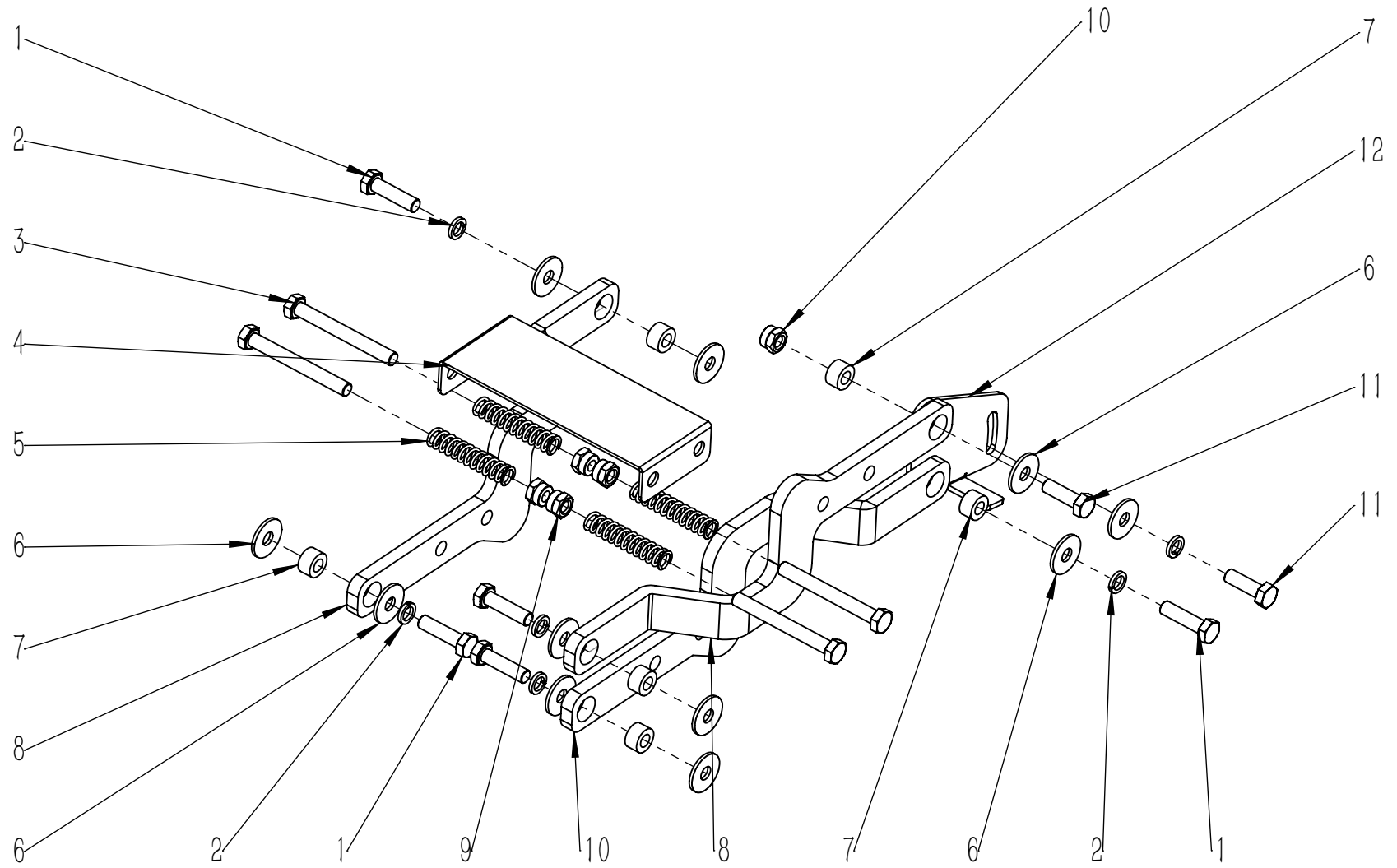
目录



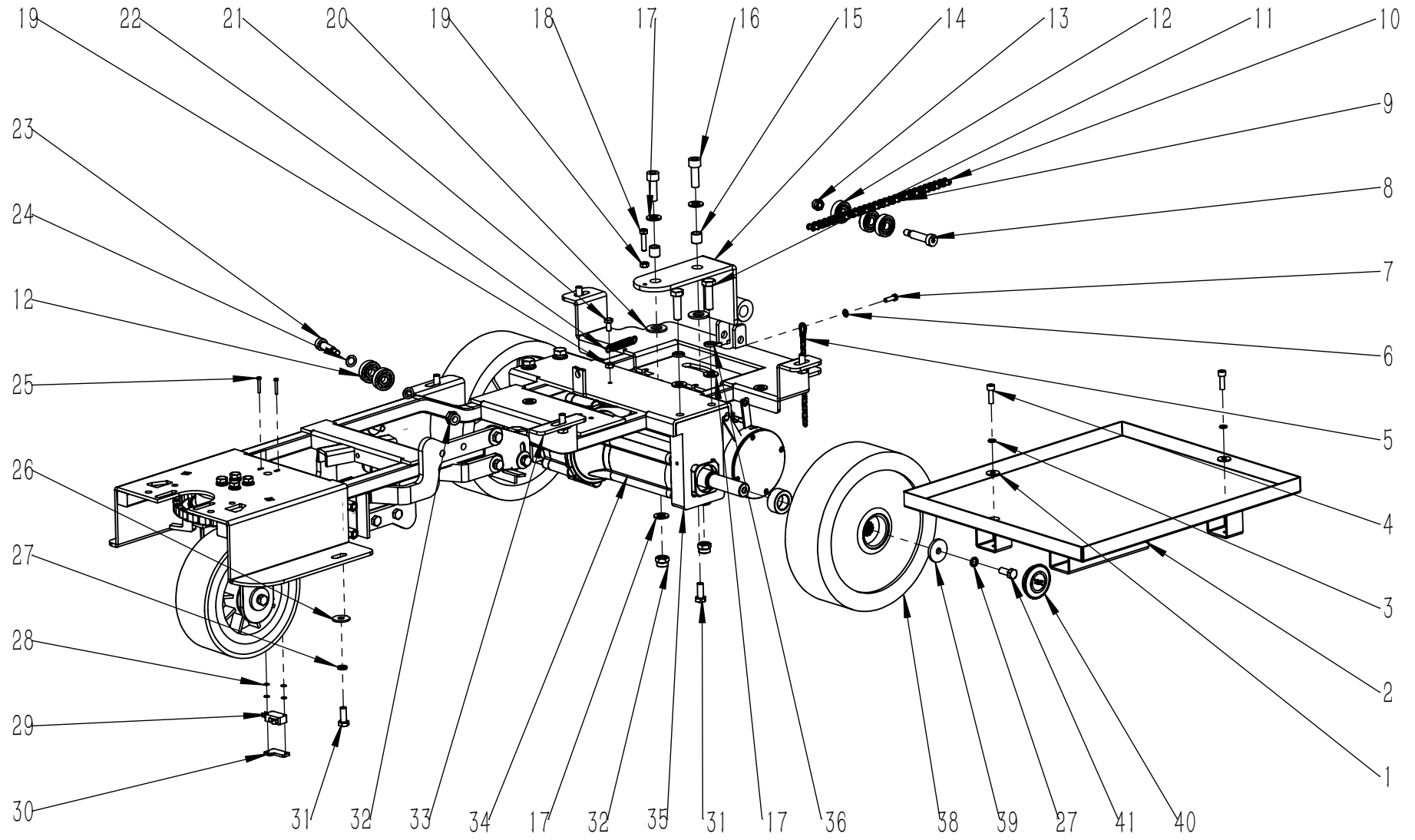
1. 机头组件	1—2
NOSE ASSEMBLY	
2. 机头连接杆组件	3—4
CONNECTION BAR ASSEMBLY	
3. 底座架组件	5—8
FRAME ASSEMBLY	
4. 扒头支架组件	9—10
SQUEEGEE CONTROL ASSEMBLY	
5. 扒头组件	11—12
SQUEEGEE ASSEMBLY	
6. 转向组件	13—18
DIVERSION ASSEMBLY	
7. 从动动组件	19—20
DRIVE ASSEMBLY	
8. 电器组件	21—22
CONTROLLER ASSEMBLY	
9. 污水箱组件	23—26
RECOVERY TANK ASESEMBLY	
10. 水箱体组件	27—34
WATER TANK ASESEMBLY	
11. 水路组件	35—38
WATER ASESEMBLY	
12. 附件	39—43
ACCESSORIES	



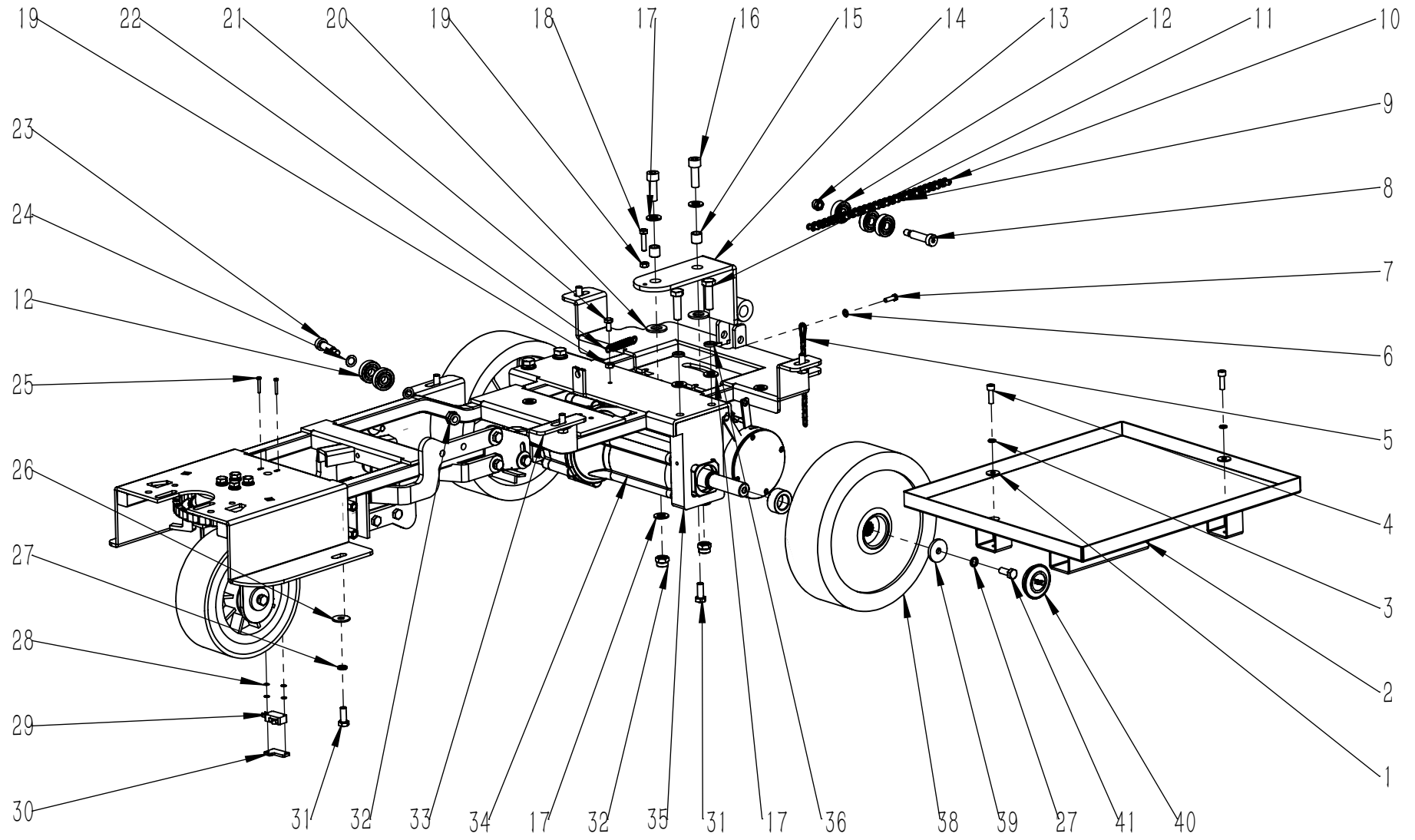
项目号 ITEM	零件号 P/N	数量 QTY	名称	DESCRIPTION
1	W020240	1	刷盘电机组件-24V-500W-140RPM	BBRUSH MOTOR ASSEMBLY 24V 500W 140RPM
2	N010007	4	外六角-M8x25-镀锌	SCREW M8x25 ZINC
3	N040013	4	弹垫-M8-镀锌	LOCK WASHER M8 ZINC
4	A040043	1	机头支座 45x50x57	SUPPORT 45x50x57
5	N030006	4	平垫-8x16x1.6-镀锌	WASHER 8x16x1.6 ZINC
6	N010144	1	外六角-M8x50-不锈钢	SCREW M8x50 A2
7	N030028	3	平垫-8x24x2-不锈钢	WASHER 8x24x2 A2
8	N110019	1	防撞轮 D100x29.5	WHEEL Φ100x29.5
9	B020027	1	防撞轮铜套 8x10x31	BUSHING 8x10x31
10	A040045	2	防溅条紧固钢条 10x415	BLADE 10x415
11	C030016	2	刷盘防溅条 110x610	RUBBER SKIRT 110x610
12	N020024	1	自锁螺母-M8-不锈钢	LOCK NUT M8 A2
13	N010179	2	十字盘头-M5x8-不锈钢	SCREW M5x8 A2
14	A040060	1	弹簧锁紧板	SPRING LOCKING PLATE
15	B060122	1	刷盘锁紧器弹簧 D2	LOCKING SPRING Φ2
16	D010030	1	刷盘锁紧器-左-T90	BRUSH PLATE-LEFE T90
17	N010006	4	外六角-M6x20-镀锌	SCREW M6x20 ZINC
18	N040001	5	弹垫-M6-镀锌	LOCK WASHER M6 ZINC
19	N010005	1	外六角-M6x16-镀锌	SCREW M6x16 ZINC
20	N030008	1	平垫-6x18x1.6-镀锌	WASHER 6x18x1.6 ZINC
21	A040042	1	刷盘外罩 D555	BRUSH BASE Φ555
22	N020049	8	法兰面螺母-M5-不锈钢	NUT M5 A2
23	B070010	2	异型套圈 2x26	RING 2x26
24	N010135	4	外六角-M5x20-不锈钢	SCREW M5x20 A2
25	B060012	2	钢条拉簧 1.1x10x55	SPRING 1.1x10x55
26	W020021	1	电磁阀水路组件 T90	WATER ASSEMBLY T90
27	A040044	1	机头支座 36x90x57	SUPPORT 36x90x57
28	N060015	1	气弹簧扁头 M6	COUPLNG M6
29	N100020	1	链条 06B-8/15	CHAIN 06B-8/15
30	N100021	2	链条连接扣	JOINT CHAIN



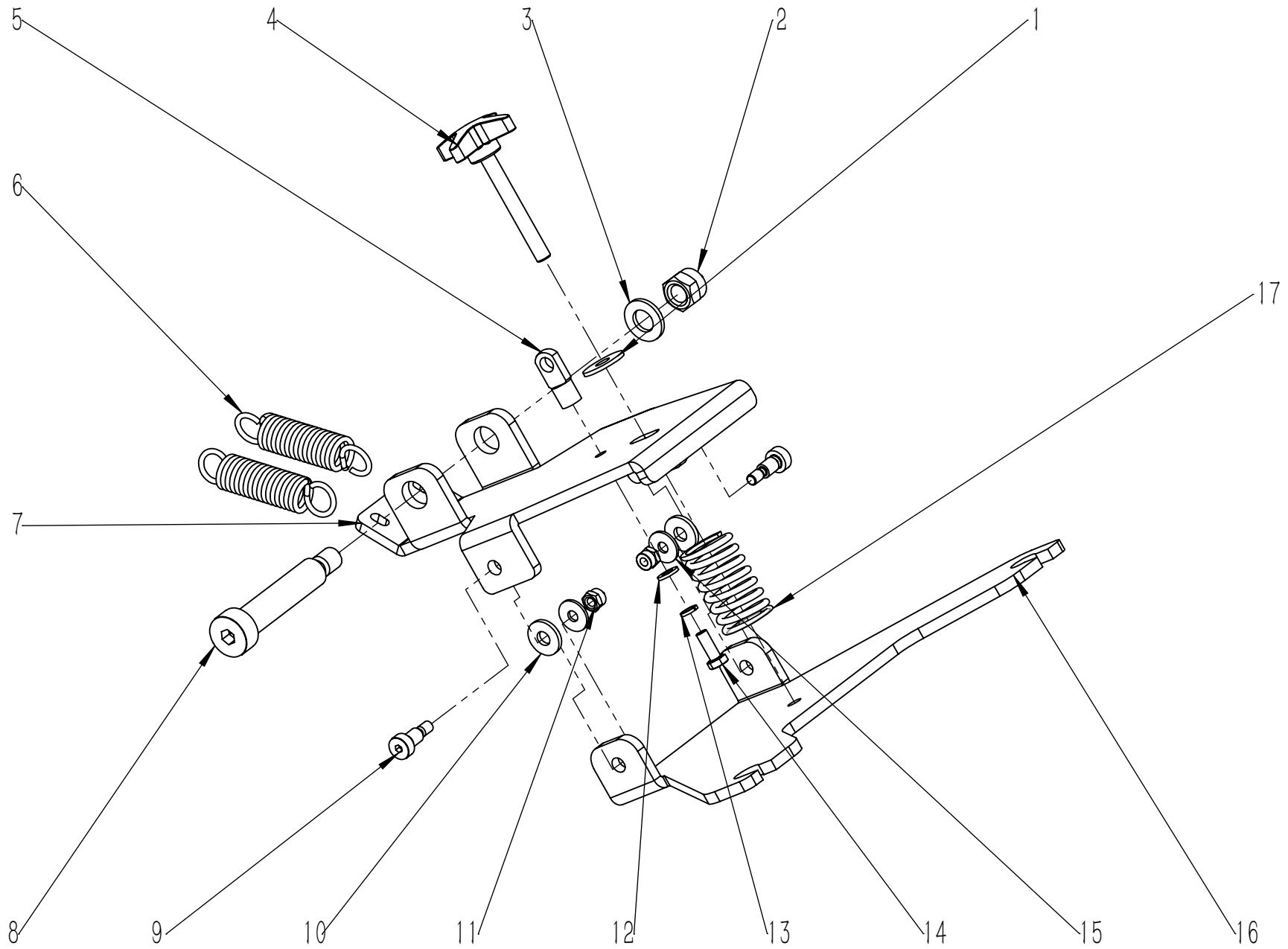
项目号 ITEM	零件号 P/N	数量 QTY	名称	DESCRIPTION
1	N010002	5	外六角-M8x30-镀锌	SCREW M8x30 ZINC
2	N040013	6	弹垫-M8-镀锌	LOCK WASHER M8 ZINC
3	N010056	4	外六角-M8x70-镀锌-全牙	SCREW M8x70 ZINC
4	A040034	1	拉臂连接板 150	PLAQUE 150
5	B070009	4	压簧 1.75x12x55	SPRING 1.75x12x55
6	N030027	11	平垫-8x24x2-镀锌	WASHER 8x24x2 ZINC
7	B020001	6	铜套 8x15x8.5	BUSHING 8x15x8.5
8	A040037	2	连接臂右	RIGHT ARM
9	N020001	5	自锁螺母-M8-镀锌	LOCK NUT M8 ZINC
10	A040036	1	连接臂左	LEFT ARM
11	N010007	2	外六角-M8x25-镀锌	SCREW M8x25 ZINC
12	A040033	1	拉臂连接板 40	PLAQUE 40



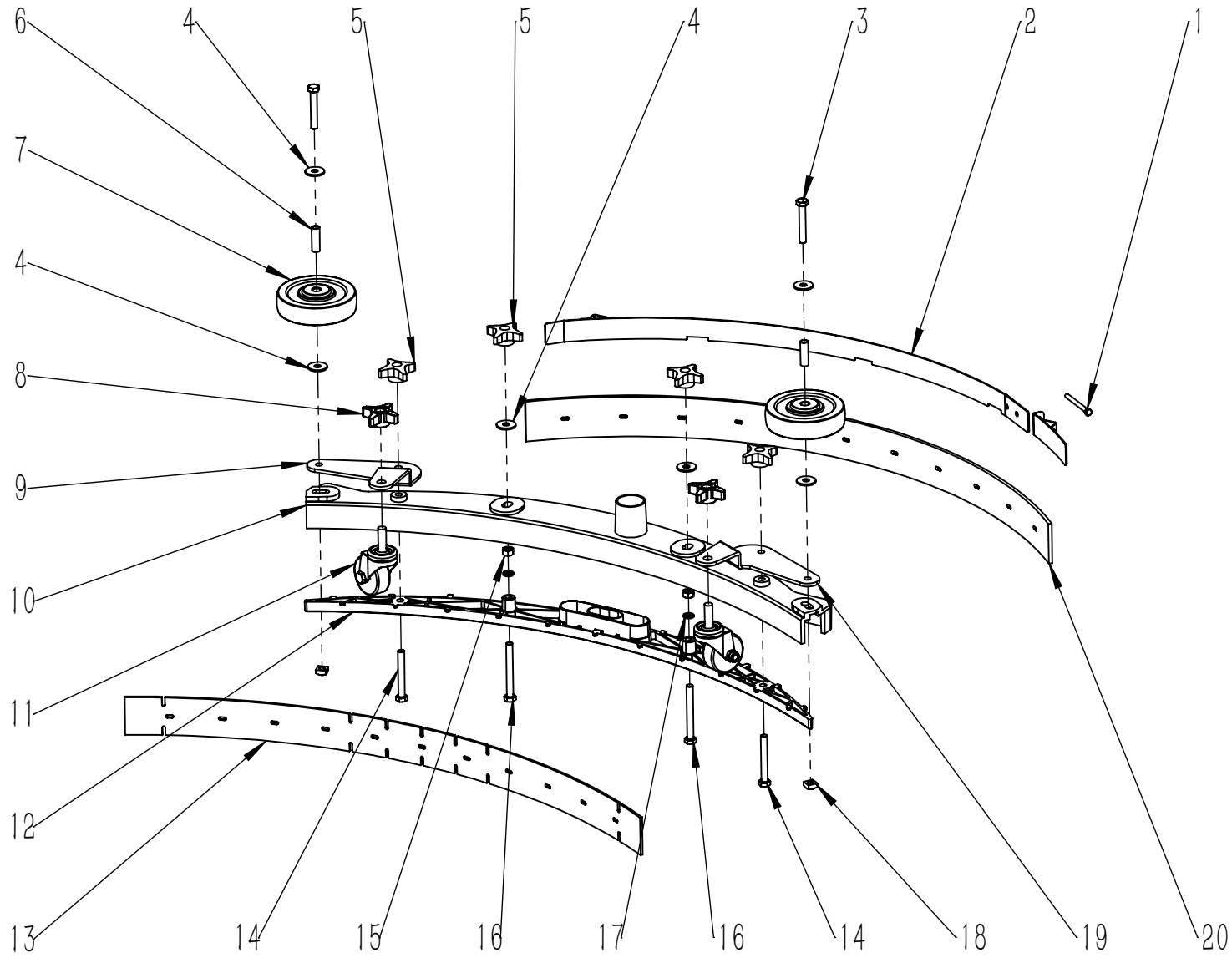
项目号 ITEM	零件号 P/N	数量 QTY	名称	DESCRIPTION
1	N030022	2	平垫-6x18x1.6-不锈钢	WASHER 6x18x1.6 A2
2	A030040	1	电池盒 360x416	BATTERY BASE 360x416
3	N040011	2	弹垫-M6-不锈钢	LOCK WASHER M6 A2
4	N010057	2	内六角圆柱头-M6x20-不锈钢	SCREW M6x20 A2
5	N100040	1	防静电链条 150mm	ANTI-STATIC CHAIN L=150MM
6	N030031	1	平垫-5x10x1-镀锌	WASHER 5x10x1 ZINC
7	N010025	1	外六角-M5x16-镀锌	SCREW M5x16 ZINC
8	N010259	1	轴肩螺栓-D10x35xM8-达克罗	SCREW D10x35xM8 DACROMET
9	N100051	1	链条 06B-1-24	CHAIN 06B-1-24 T90
10	N100021	2	链条连接扣	JOINT CHAIN
11	N010081	4	外六角-M10x35-镀锌	SCREW M10x35 ZINC
12	N070009	5	轴承 6200	BEARING 6200
13	N020001	1	自锁螺母-M8-镀锌	LOCK NUT M8 ZINC
14	A050070	1	扒头连接支架 T90	STEAK HEAD CONNECTION BRACKET T90
15	B020037	2	铜套 D10xD14X13.5	BUSHING D10xD14X13.5
16	N010063	2	内六角圆柱头-M10x30-镀锌	SCREW M10x30 ZINC
17	N030004	8	平垫-10x20x2-镀锌	WAHSE 10x20x2 ZINC
18	N010106	1	外六角-M6x25-不锈钢	SCREW M6x25 A2
19	N020005	2	六角螺母-M6-不锈钢	NUT M6 A2
20	N030029	2	平垫-14x28x2.5-不锈钢	WASHER 14x28x2.5 A2
21	N010145	1	外六角-M6x12-不锈钢	SCREW M6x12 A2
22	B060012	1	钢条拉簧 1.1x10x55	SPRING 1.1x10x55
23	N010305	1	轴肩螺栓-D10x30xM8-达克罗	SHOULDER BOLT D10x30xM8 DACROMET
24	B060074	2	垫圈 10x16x0.5	WASHER 10x16x0.5
25	N010071	2	圆头十字-M3x20-镀锌	SCREW M3x20 ZINC
26	N030027	6	平垫-8x24x2-镀锌	WASHER 8x24x2 ZINC
27	N040013	8	弹垫-M8-镀锌	LOCK WASHER M8 ZINC
28	N030019	4	平垫-3x7x0.5-不锈钢	WASHER 3x7x0.5 A2
29	W020361	1	防水微动开关组件-250V-16A-常开	MICROSWITCH ASSEMBLY NORMALLY SWITCH ON
30	A020018	1	右开关支架	SUPPORT RIGHT



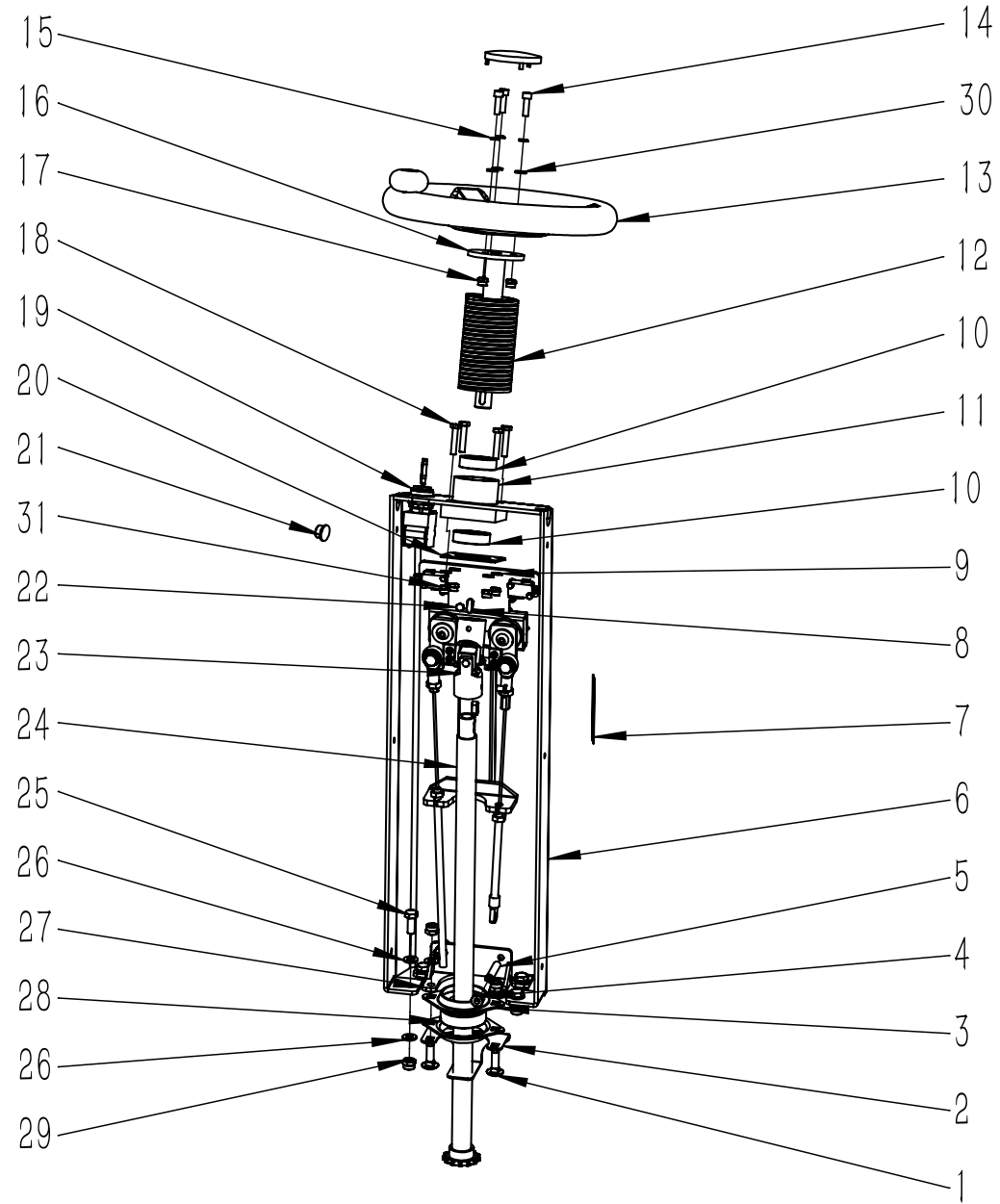
项目号 ITEM	零件号 P/N	数量 QTY	名称	DESCRIPTION
31	N010034	8	外六角-M8x20-镀锌	SCREW M8x20 ZINC
32	N020002	3	自锁螺母-M10-镀锌	LOCK NUT M10 ZINC
33	A030053A	1	底座架 T90 一体轴	FRAME T90 INTEGRATED SHAFT
34	W020267	1	驱动电机组件 24V 300W	DRIVE MOTOR ASSEMBLY 24V 300W
35	B050067	2	后驱安装座 T90	REAR DRIVE MOUNT T90
36	N040003	4	弹垫-M10-镀锌	LOCK WASHER M10 ZINC
38	N110016A	2	花键驱动轮 225x65	DRIVING WHEEL 225x65
39	B060069	2	平垫-8.5x30x4-镀锌	WASHER 8.5x30x4 ZINC
40	C020003A	2	脚轮盖 D42-YL	COVERΦ42-YL
41	N010407	2	外六角点胶螺栓 M8X25 镀锌	HEXAGON DISPENSING BOLTS M8X25 ZINC PLATED



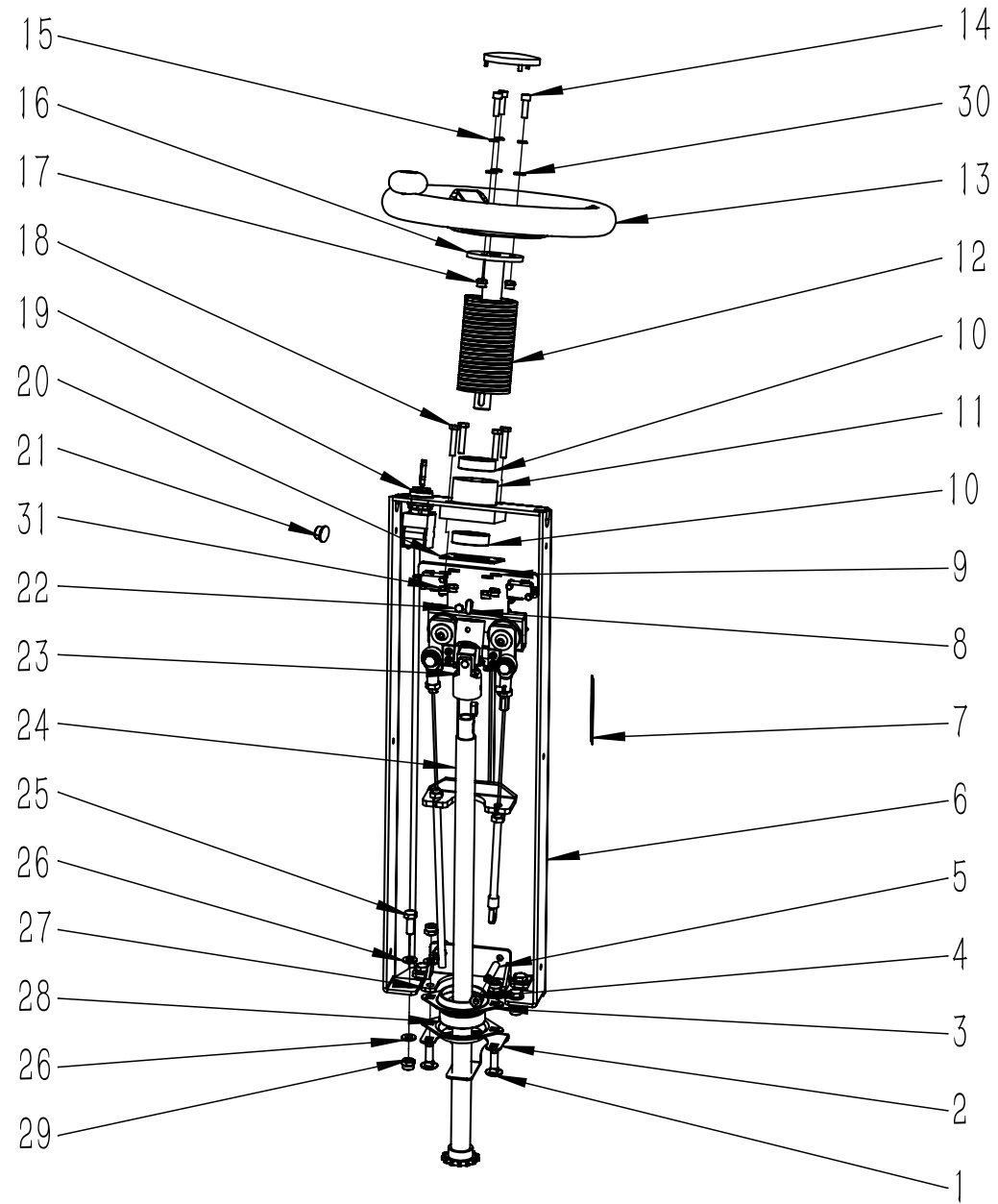
项目号 ITEM	零件号 P/N	数量 QTY	名称	DESCRIPTION
1	N030028	1	平垫-8x24x2-不锈钢	WASHER 8x24x2 A2
2	N020003	1	自锁螺母-M12x1.75-镀锌	LOCK NUT M12x1.75 ZINC
3	N030011	1	平垫-12x24x2.5-镀锌	WASHER 12x24x2.5 ZINC
4	N100003	1	调节手柄 M8x60	ADJUSTER M8x60
5	N060015	1	气弹簧扁头 M6	COUPLNG M6
6	B070032	2	拉簧 D2.8xD20x86	TENSION SPRING D2.8xD20x86
7	A050071	1	扒头上支架 T90 一体轴	BRACKET ON THE HEAD T90 INTEGRATED SHAFT
8	N010248	1	轴肩螺栓-D16x70xM12-达克罗	SHOULDER BOLT D16x70xM12 DACROMET
9	N010247	2	轴肩螺栓-D8x12xM6-达克罗	SHOULDER BOLT D8x12xM6 DACROMET
10	B050058	2	四氟垫片 D8.2xD20x2.5	WASHER Φ 8.2x Φ 20x2.5
11	N020006	2	自锁螺母-M6-不锈钢	LOCK NUT M6 A2
12	N030007	1	平垫-6x12x1.6-镀锌	WASHER 6x12x1.6 ZINC
13	N040001	1	弹垫-M6-镀锌	LOCK WASHER M6 ZINC
14	N010005	1	外六角-M6x16-镀锌	SCREW M6x16 ZINC
15	N030022	2	平垫-6x18x1.6-不锈钢	WASHER 6x18x1.6 A2
16	A050072	1	扒头下支架 T90 一体轴	BRACKET UNDER BRACKET T90 INTEGRATED SHAFT
17	B070027	1	压簧 D3.5xD30x48 (7 圈)	SPRING Φ 3.5x Φ 30x48



项目号 ITEM	零件号 P/N	数量 QTY	名称	DESCRIPTION
1	N010146	1	外六角-M5x55-不锈钢	SCREW M5x55 A2
2	A030035	1	扒头后固定钢板 820	PLATES 820
3	N010144	2	外六角-M8x50-不锈钢	SCREW M8x50 A2
4	N030028	6	平垫-8x24x2-不锈钢	WASHER 8x24x2 A2
5	N100005	4	四星螺帽 M8x22	NUT M8x22
6	B020027	2	防撞轮铜套 8x10x31	BUSHING 8x10x31
7	N110019	2	防撞轮 D100x29.5	WHEEL Φ100x29.5
8	C020253	2	万向轮星型把手 M10	UNIVERSAL WHEEL STAR HANDLE M10
9	A030105	1	万向轮支架右 760 新	SUPPORT RIGHT 760 NEW
10	D010042	1	扒头主体 760 新	SQUEEGEE BODY 760 NEW
11	N110048	2	M10 螺杆万向轮Φ50	M10 SCREW UNIVERSAL WHEEL Φ50
12	B050069	1	半月板 760 新	PLATE 760 NEW
13	C030014LAT	1	前刮条-橡皮-3x50x785	FRONT SQUEEGE BLADE RUBBER LATEX 3x50x785
14	N010128	2	外六角-M8x60-不锈钢	SCREW M8x60 A2
15	N020010	2	螺母-M8-不锈钢	NUT M8 A2
16	N010127	2	外六角-M8x70-不锈钢-全牙	SCREW M8x70 A2
17	N040017	2	弹垫-M8-不锈钢	LOCK WASHER M8
18	N020011	2	方形螺母-M8-13x13x6.5-不锈钢	NUT M8 13x13x6.5 A2
19	A030104	1	万向轮支架左 760 新	SUPPORT LEFT 760 NEW
20	C030015LAT	1	后刮条-橡皮-4.5x53x835	REAR SQUEEGE BLADE RUBBER LATEX 4.5x53x835

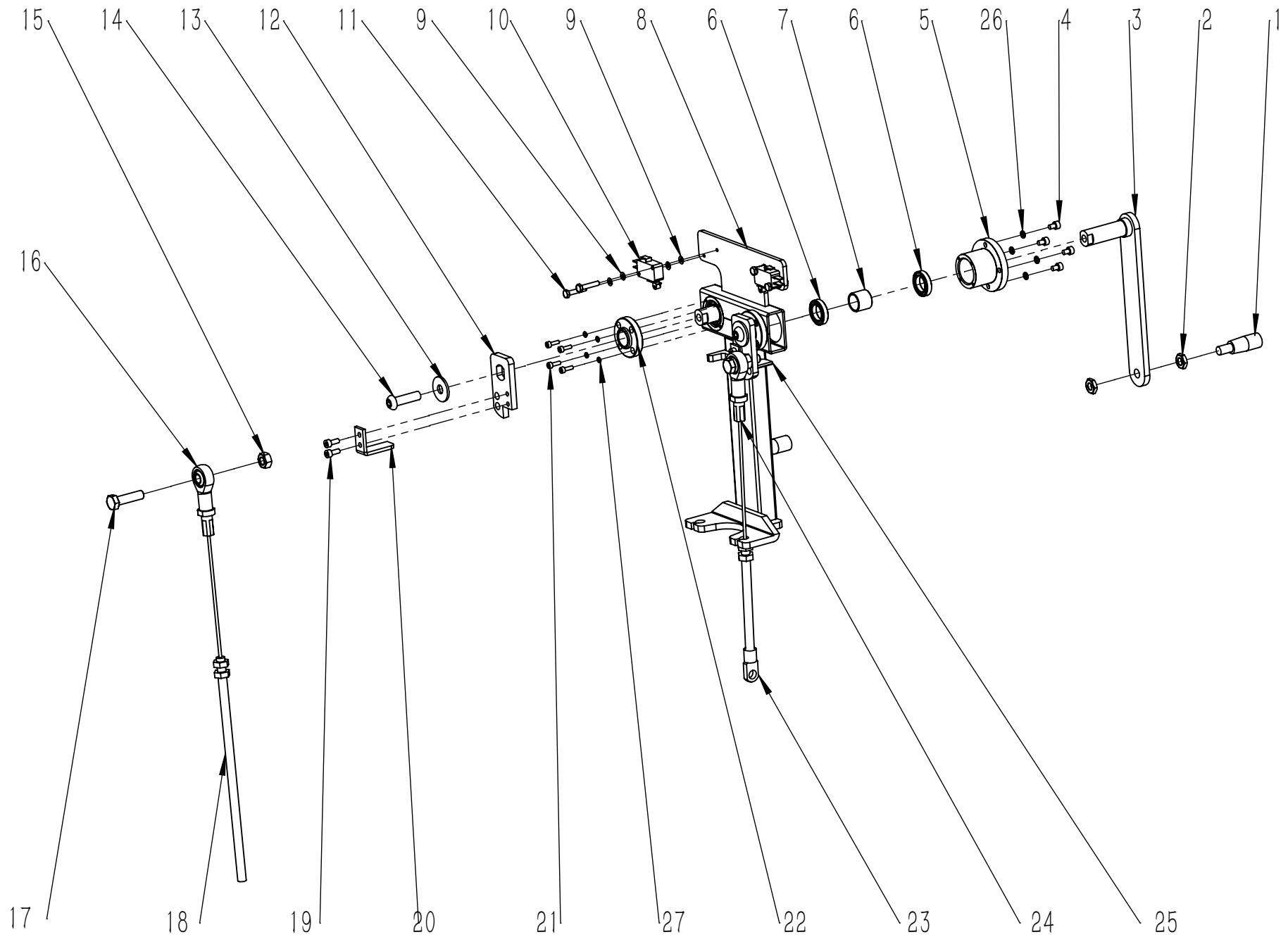


项目号 ITEM	零件号 P/N	数量 QTY	名称	DESCRIPTION
1	N010014	2	圆头方径螺栓-M8x25-镀锌	SCREW M8x25 ZINC
2	A020019	1	轴承座固定支座 40x76	SUPPORT 40x76
3	N070004	2	轴承座-SBPFL-205	BEARING SUPPORT SBPFL 205
4	N020010	2	螺母-M8-不锈钢	NUT M8 A2
5	N010140	2	内六角紧定螺钉-M8x40-不锈钢	SCREW M8x40 A2
6	A020023	1	转向器支架 180	SUPPORT 180
7	C040027	1	水量标识 T90	DECAL T90
8	N060016	2	平键 6x6x16	FLAT KEY 6x6x16
9	N030007	4	平垫-6x12x1.6-镀锌	WASHER 6x12x1.6 ZINC
10	N070001	2	轴承 6004	BEARING 6004
11	D010010	1	轴承座 D70	BEARING SUPPORT Φ70
12	N090028	1	波纹管轴套 D50x100	SPACER φ50x100
13	N110035	1	方向盘-带助力球-T90	STEERING WHEEL BOOSTER BALL T90
14	N010057	3	内六角圆柱头-M6x20-不锈钢	SCREW M6x20 A2
15	N040011	3	弹垫-M6-不锈钢	LOCK WASHER M6 A2
16	A020022	1	方向盘固定轴 Φ20	SHAFT Φ20
17	N020006	3	自锁螺母-M6-不锈钢	LOCK NUT M6 A2
18	N010033	4	外六角-M6x30-镀锌	SCREW M6x30 ZINC
19	W020013	1	钥匙开关组件 双开	KEY SWITCH ASSEMBLY
20	A020021	1	轴承座固定板 64x64	PLAQUE 64x64
21	W020270	1	喇叭按钮组件	HORN BUTTON ASSEMBLY
22	N010184	2	外六角-M6x8-发黑	SCREW M6x8 (BLACKENING)
23	N060014	1	万向节 18x32x85	UNIVERSAL JOINT 18x32x85
24	B060089	1	转向小齿轮轴 547	SHAFT 547
25	N010034	4	外六角-M8x20-镀锌	SCREW M8x20 ZINC
26	N030006	10	平垫-8x16x1.6-镀锌	WASHER 8x16x1.6 ZINC
27	A020020	1	轴承座固定支座 76	SUPPORT 76
28	N070005	1	轴承-SBPFL-205	BEARING SBPFL 205
29	N020001	6	自锁螺母-M8-镀锌	LOCK NUT M8 ZINC

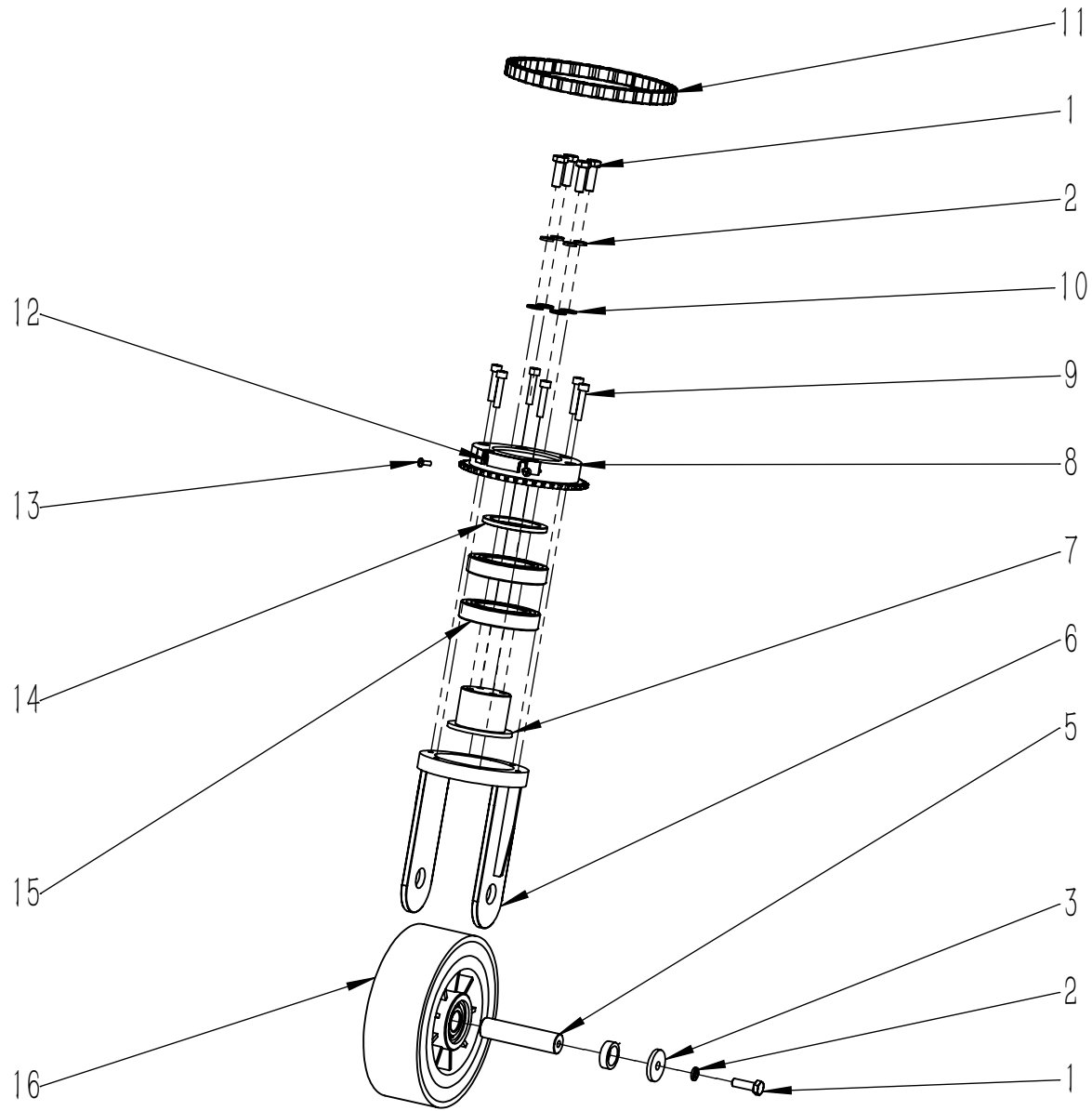




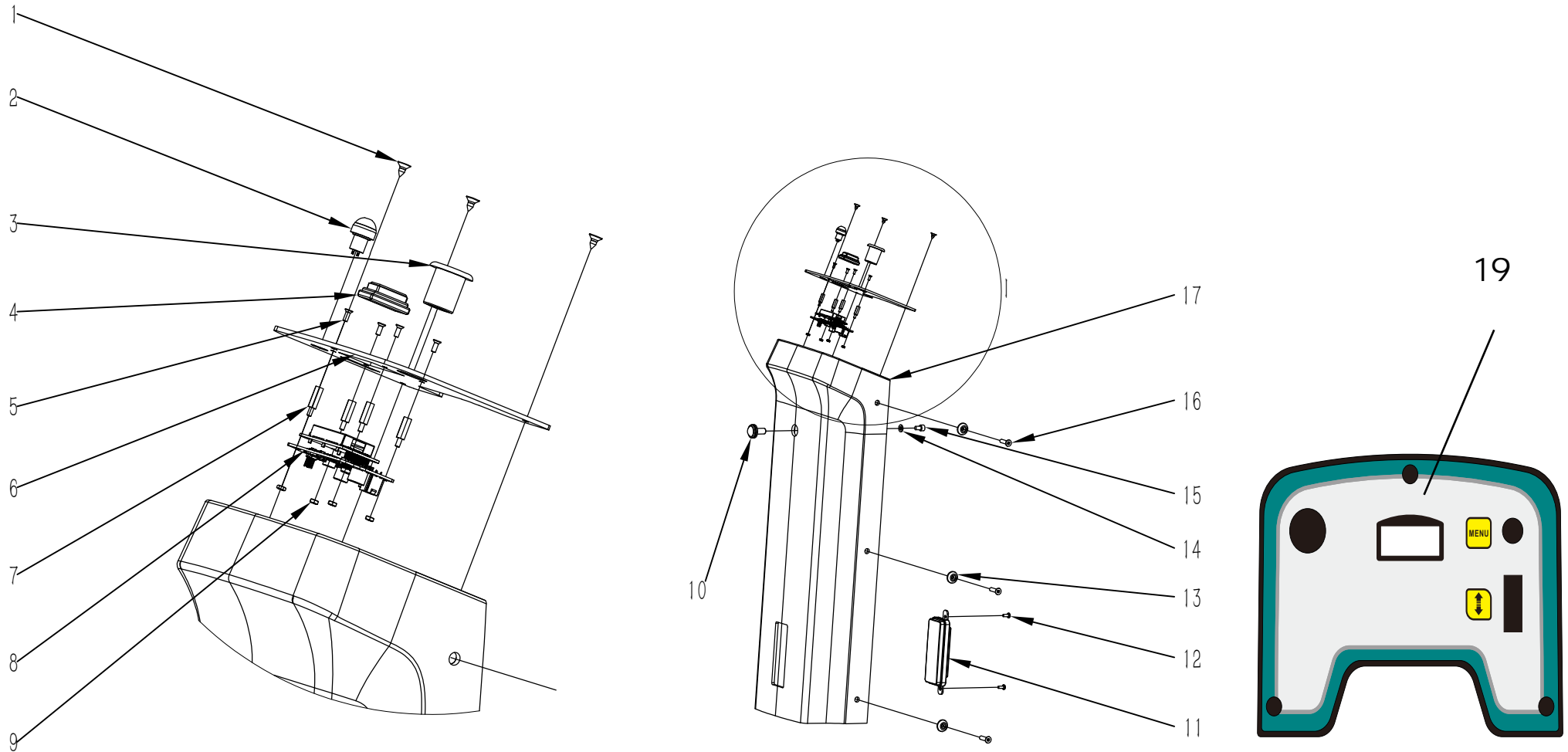
项目号 ITEM	零件号 P/N	数量 QTY	名称	DESCRIPTION
30	N030024	3	平垫-6x12x1.6-不锈钢	WASHER 6x12x1.6 A2
31	N020012	4	自锁螺母-M6-镀锌	LOCK NUT M6 ZINC



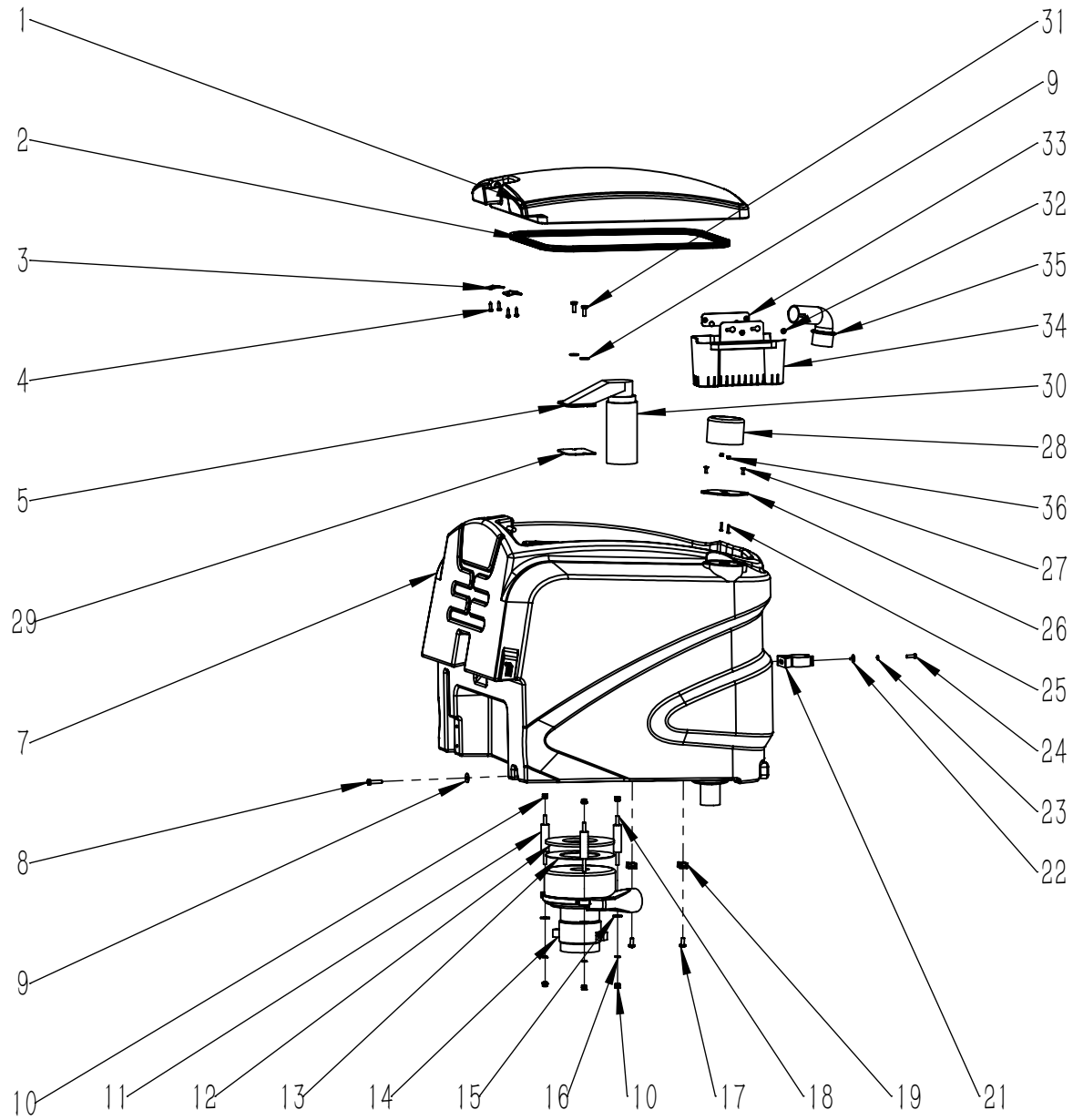
项目号 ITEM	零件号 P/N	数量 QTY	名称	DESCRIPTION
1	N100030	2	胶木手柄 M8	HANDWHEEL M8
2	N020048	4	薄螺母-M8-镀锌	NUT M8 A2
3	A020033	2	摇臂 T90	ROCKER ARM T90
4	N010187	8	内六角圆柱头-M4x6-不锈钢	SCREW M4x6 A2
5	B060143	2	轴承座	BEARING BLOCK
6	N070021	4	轴承-61802-24x15x5	BEARING 61802 (24x15x5)
7	B010053	2	轴套 17.5x15.1x15	AXLE SLEEVE 17.5x15.1x15
8	A020015	1	手动提升杆支架	SUPPORT
9	N030019	8	平垫-3x7x0.5-不锈钢	WASHER 3x7x0.5 A2
10	W020260	2	防水微动开关组件1-250V-16A-常闭	MICROSWITCH ASSEMBLY NORMALLY SWITCH OFF
11	N010115	4	外六角-M3x20-镀锌	SCREW M3x20 ZINC
12	A020017	2	限位摇臂 61x30	LEVER 61x30
13	N030028	2	平垫-8x24x2-不锈钢	WASHER 8x24x2 A2
14	N010059	2	圆头内六角-M8x20-不锈钢	SCREW M8x20 A2
15	N020010	2	螺母-M8-不锈钢	NUT M8 A2
16	N070016	2	鱼眼轴承 M8	FISHEYE JOINT BEARING
17	N010002	2	外六角 M8x30 镀锌	SCREW M8x30 ZINC
18	B060080	1	拉线 800	CABLE 800
19	N010199	4	内六角圆柱头-M4x10-不锈钢	SCREW M4x10 A2
20	A050073	1	L 型定位片左 T150	L-SHAPED POSITIONING PIECE LEFT T150
21	N010186	8	内六角圆柱头 (GB70.1) -M3x10-不锈钢	SCREW M3x16 A2
22	B060144	2	轴承压板	BEARING PLATE
23	N060015	1	气弹簧扁头 M6	COUPLNG M6
24	B060079A	1	拉线 T90 一体轴	CABLE T90
25	A050076	1	L 型定位片右 T150	L-SHAPED POSITIONING PIECE RIGHT T150
26	N040019	8	弹垫-M4-不锈钢	LOCK WASHER M4 A2
27	N040024	8	弹垫-M3-不锈钢	LOCK WASHER M3 A2



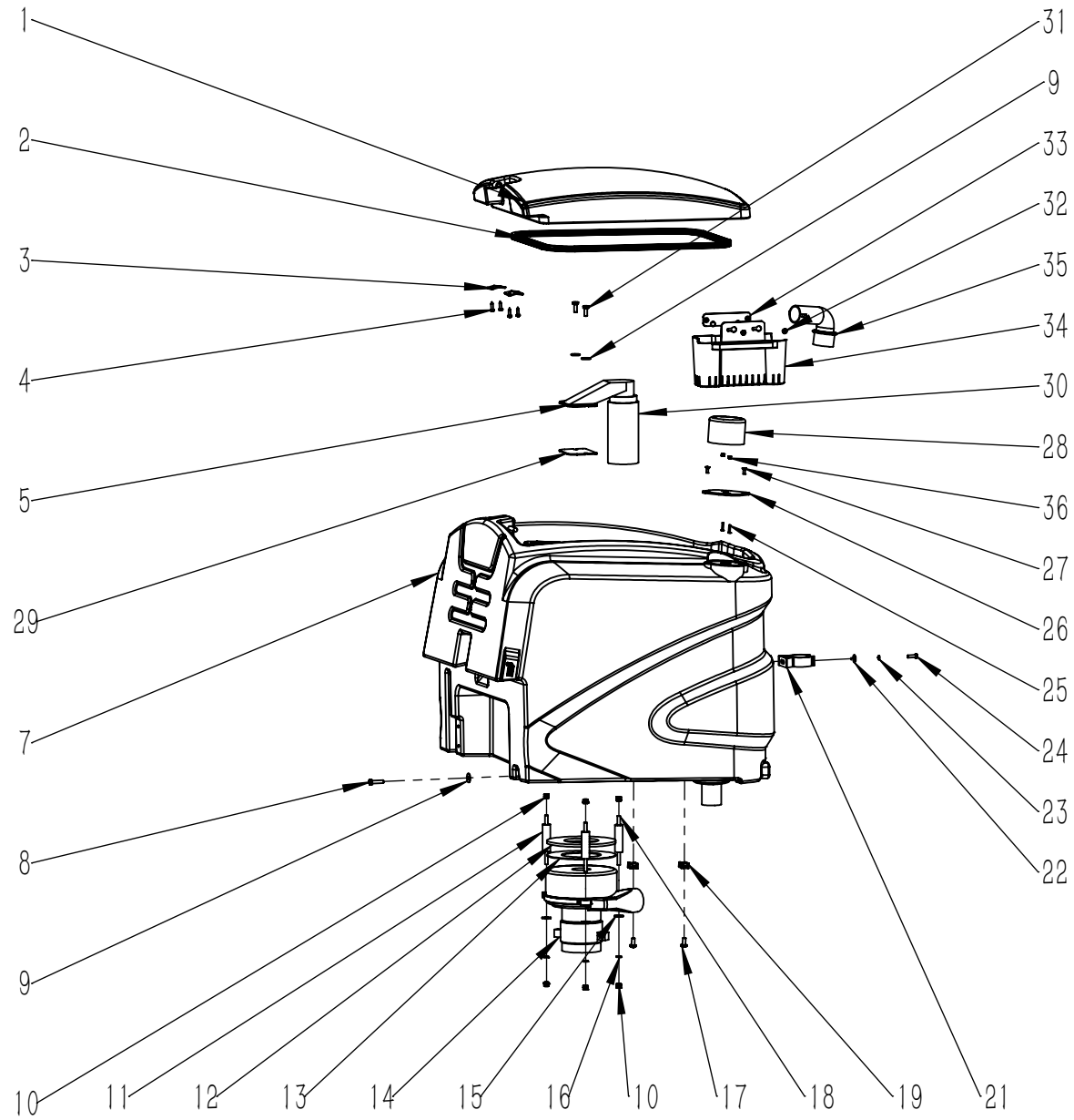
项目号 ITEM	零件号 P/N	数量 QTY	名称	DESCRIPTION
1	N010094	6	外六角-M8x25-不锈钢	SCREW M8x25 A2
2	N040017	6	弹垫-M8-不锈钢	LOCK WASHER M8
3	B060069	2	平垫-8.5x30x4-镀锌	WASHER 8.5x30x4 ZINC
5	B060071	1	从动轮轮轴 20x83.5	SHAFT 20x83.5
6	A030055	1	从动轮固定座-73.5-T90-加高 20mm	SUPPORT 73.5 T90 RISE 20mm
7	B060085	1	轴承定位轴 D50	SHAFT ϕ 50
8	B060086	1	传动链齿轮 D130	TRANSMISSION CHAIN GEAR ϕ 130
9	N010139	6	内六角圆柱头-M6x30-镀锌	SCREW M6x30 ZINC
10	N030010	4	平垫-8x16x1.6-不锈钢	WASHER 8x16x1.6 A2
11	N100019	1	链条 06B-25/49	CHAIN 06B-25/49
12	B050018	1	链轮开关 D110x13	CAM ϕ 110x13
13	N010070	2	圆头十字-M4x10-不锈钢	SCREW M4x10 A2
14	B060068	1	垫圈 50x65x5	WASHER 50x65x5
15	N070006	2	轴承 6010	BEARING 6010
16	N110015A	1	轮子 D175x60	WHEEL ϕ 175x60



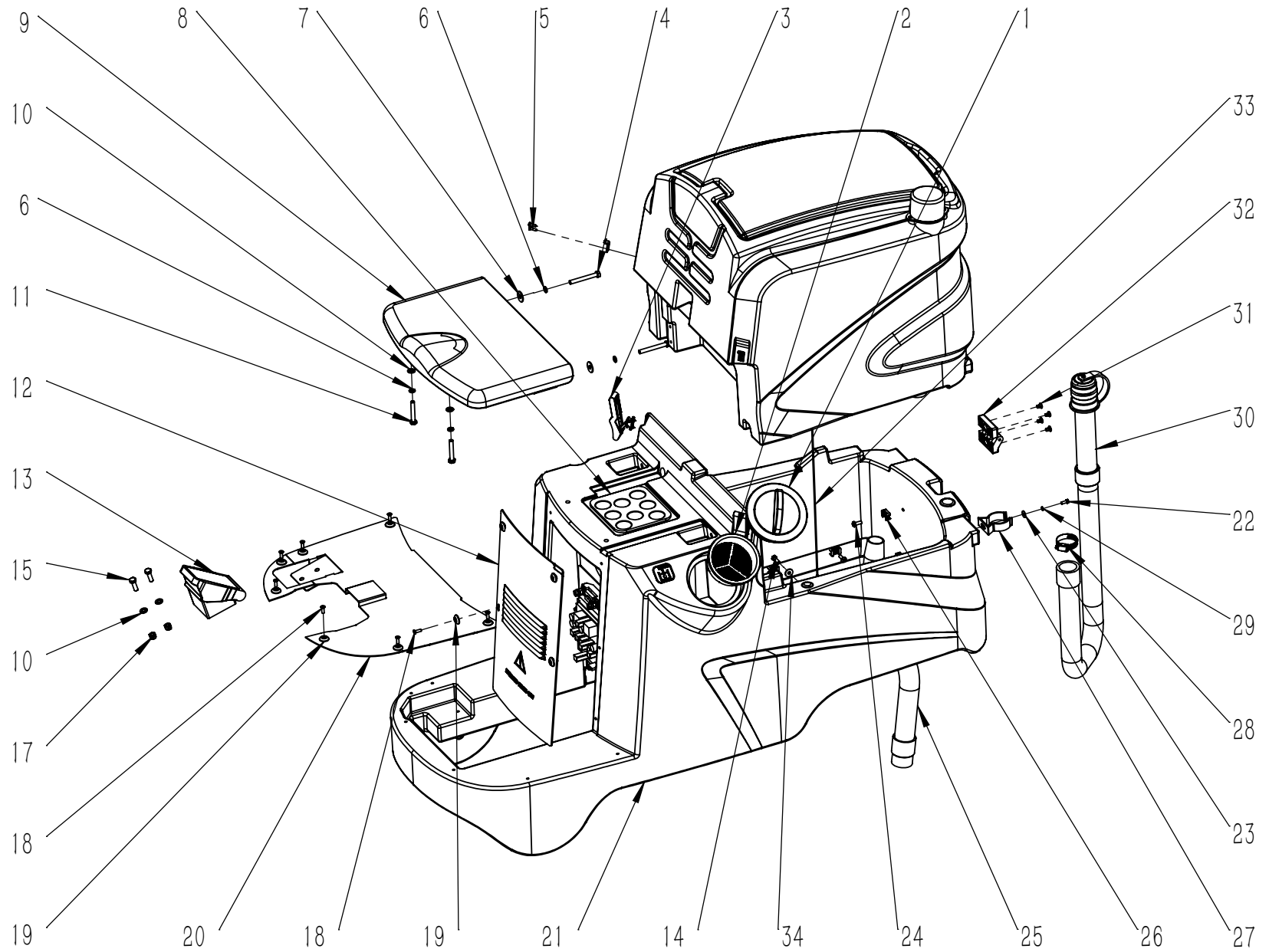
项目号 ITEM	零件号 P/N	名称	数量 QTY	DESCRIPTION
1	N010339	沉头十字自攻螺栓-M4. 2x9. 5-不锈钢	3	SELF TAPPING SCREW M4.2x9.5 A2
2	W020258	选择按钮组件	1	BUTTON
3	E020092	急停开关 双常闭	1	EMERGENCY STOP DOUBLE NORMALLY CLOSED
4	E020027	前进后退开关	1	FORWARD/BACKWARD SWITCH
5	N010103	沉头十字-M3x8-不锈钢	4	SCREW M3x8 A2
6	A020055	集成控制面板 T90	1	INTEGRATED CONTROL PANEL T90
7	B020040	尼龙螺柱 M3x15+6	4	NYLON STUD M3x15+6
8	W020450	控制面板组件-KDS-T90-TVX	1	CONTROL PANEL ASSEMBLY KDS T90 TVX
9	B060165	尼龙螺母 M3	4	NYLON NUT M3
10	W020488	蓝色鹰眼灯	1	BLUE LIGHT
11	W020275	前罩灯组件-24V-115×44×22	1	HEADLIGHT ASSEMBLY 24V(115x44x22)
12	N010070	圆头十字-M4x10-不锈钢	2	SCREW M4x10 A2
13	C020028	异形垫片 D5	6	WASHER Ø5
14	N030007	平垫 6x12x1.6 镀锌	1	WASHER 6x12x1.6 ZINC
15	N010237	内六角圆柱头 M6×10 镀锌	1	SCREW M6x10 ZINC
16	N010233	沉头十字-M6x25-镀黑锌	6	SCREW M6x25 BLACK ZINC PLATING
17	C010021	转向器外罩 T90	1	COVER T90
18	W020026A	线束 T90	1	WIRE HARNESS T90
19	C040012	控制面板标签 T90	1	LABEL T90



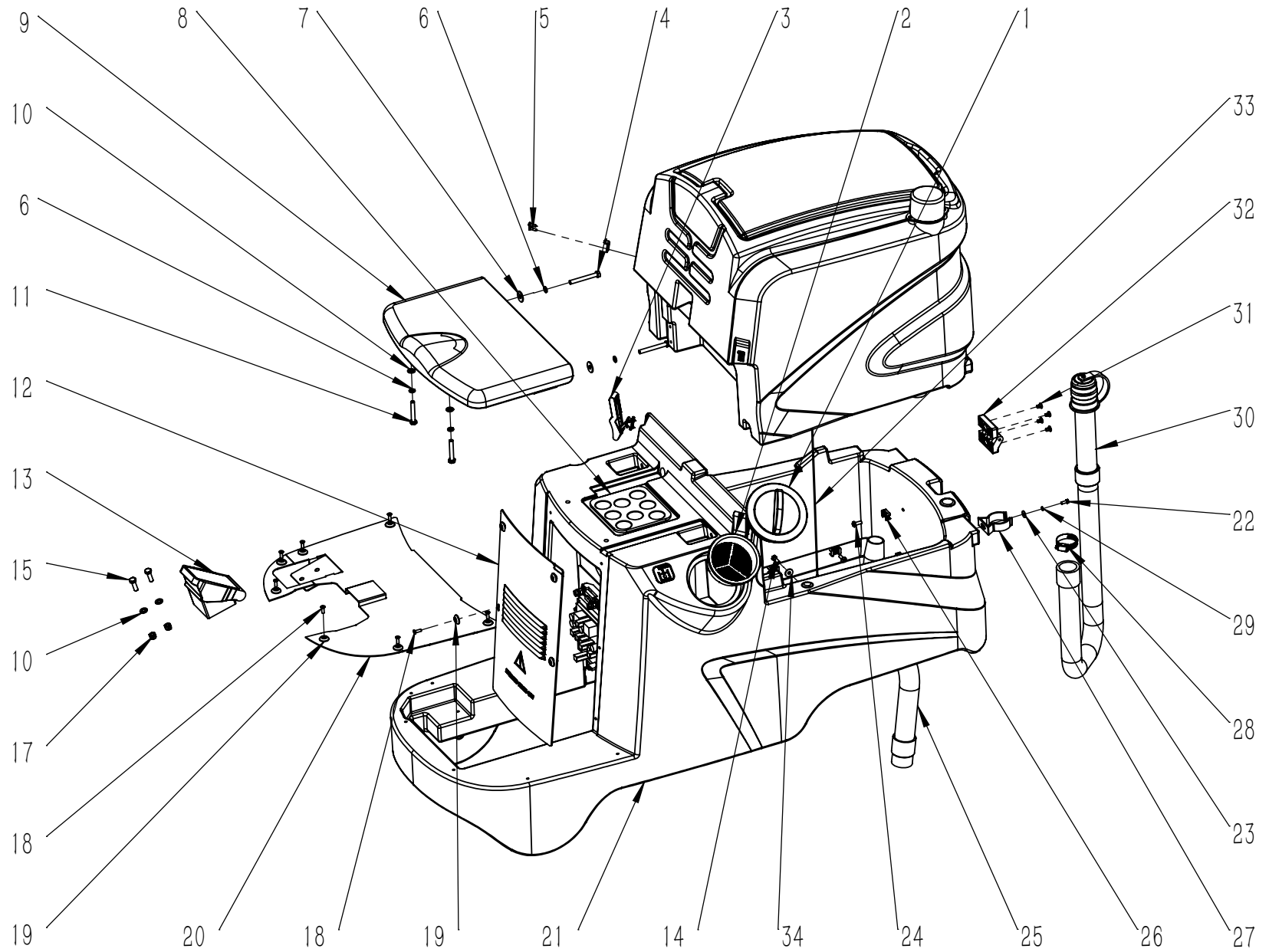
项目号 ITEM	零件号 P/N	数量 QTY	名称	DESCRIPTION
1	C010003	1	污水箱盖板	RECOVERY TANK COVER
2	N090010.1	1	污水箱上盖密封条 L=1280	RUBBER SEAL STRIP L=1280
3	A010001	2	箱盖固定板 34x30	PLAQUE 34x30
4	N010052	4	圆头十字自攻螺丝-M4.2X16-不锈钢	SELF TAPPING SCREW M4.2x16 A2
5	C020049	1	吸水口主体 T35	SUCTION BODY T35
7	C010020	1	污水箱 T90	RECOVERY TANK T90
8	N010106	1	外六角-M6x25-不锈钢	SCREW M6x25 A2
9	N030022	3	平垫-6x18x1.6-不锈钢	WASHER 6x18x1.6 A2
10	N020012	6	自锁螺母-M6-镀锌	LOCK NUT M6 ZINC
11	B050029	3	支撑套管 55	SLEEVING 55
12	F040001	1	吸水电机消音垫 D140x5	SPONGE Φ140x5
13	F040005	1	背胶-D(140-70)-3M	3M ADHESIVES GUM φ (140-70)
14	W020252	1	吸水电机组件-24V-390W-JH	VACUUM MOTOR ASSEMBLY 24V-390W-JH
15	N030008	3	平垫-6x18x1.6-镀锌	WASHER 6x18x1.6 ZINC
16	N040001	3	弹垫-M6-镀锌	LOCK WASHER M6 ZINC
17	N010112	2	十字盘头-M5x16-不锈钢	SCREW M5x16 A2
18	N100008	3	螺杆 M6x100	SCREW M6x100mm
19	N090002	2	扎带固定座 23x16	SUPPORT 23x1
21	C020265	1	加强管托 D43	REINFORCED TUBE SUPPORT D43
22	N030040	1	平垫-5x15x1.2-不锈钢	WASHER 5x15x1.2
23	N040023	1	弹垫-M5-不锈钢	LOCK WASHER M5
24	N010029	1	外六角-M5x16-不锈钢	SCREW M5x16 A2
25	N010170	2	沉头十字螺栓-M3x16-不锈钢	SCREW M3x16 A2
26	A030085	1	灯罩连接板 T90	LAMPSHADE CONNECTING BOARD T90
27	N010299	2	沉头十字-M4x12-不锈钢发黑	SCREW M4x12 A2 BLACK
28	W020268	1	警示灯组件A D73-T90	WARNING LIGHT ASSEMBLY D73-T90
29	C030040	1	吸水口密封垫 T35	SUCTION GASKET T35



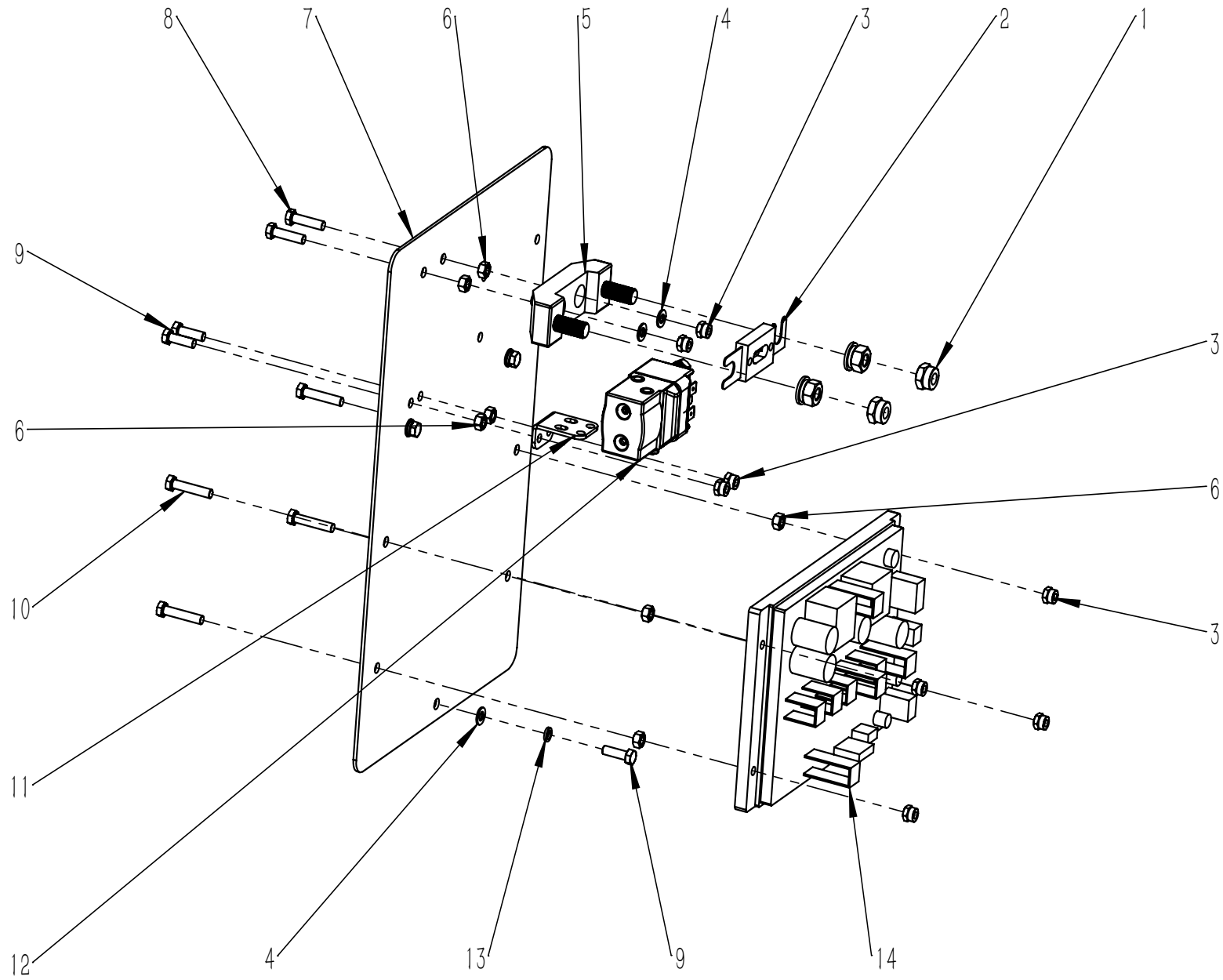
项目号 ITEM	零件号 P/N	数量 QTY	名称	DESCRIPTION
30	F040010	1	吸水口浮球 T35	SUCTION FLOATER T35
31	N010226	2	外六角-M6x16-黑色PP	SCREW M6x16 BLACK PP
32	N010097	2	沉头十字自攻螺栓-M4. 2x13-不锈钢	SELF TAPPING SCREW M4.2x13 A2
33	A040107	1	过滤篮固定座	FILTER BASKET HOLDER
34	C020087	1	一级过滤器 T130	PRIMARY FILTER T130
35	C020008	1	污水进水口弯头 D.38	CONNECTOR BEND D.38
36	N020045	2	自锁螺母-M3-不锈钢	LOCK NUT M3 A2



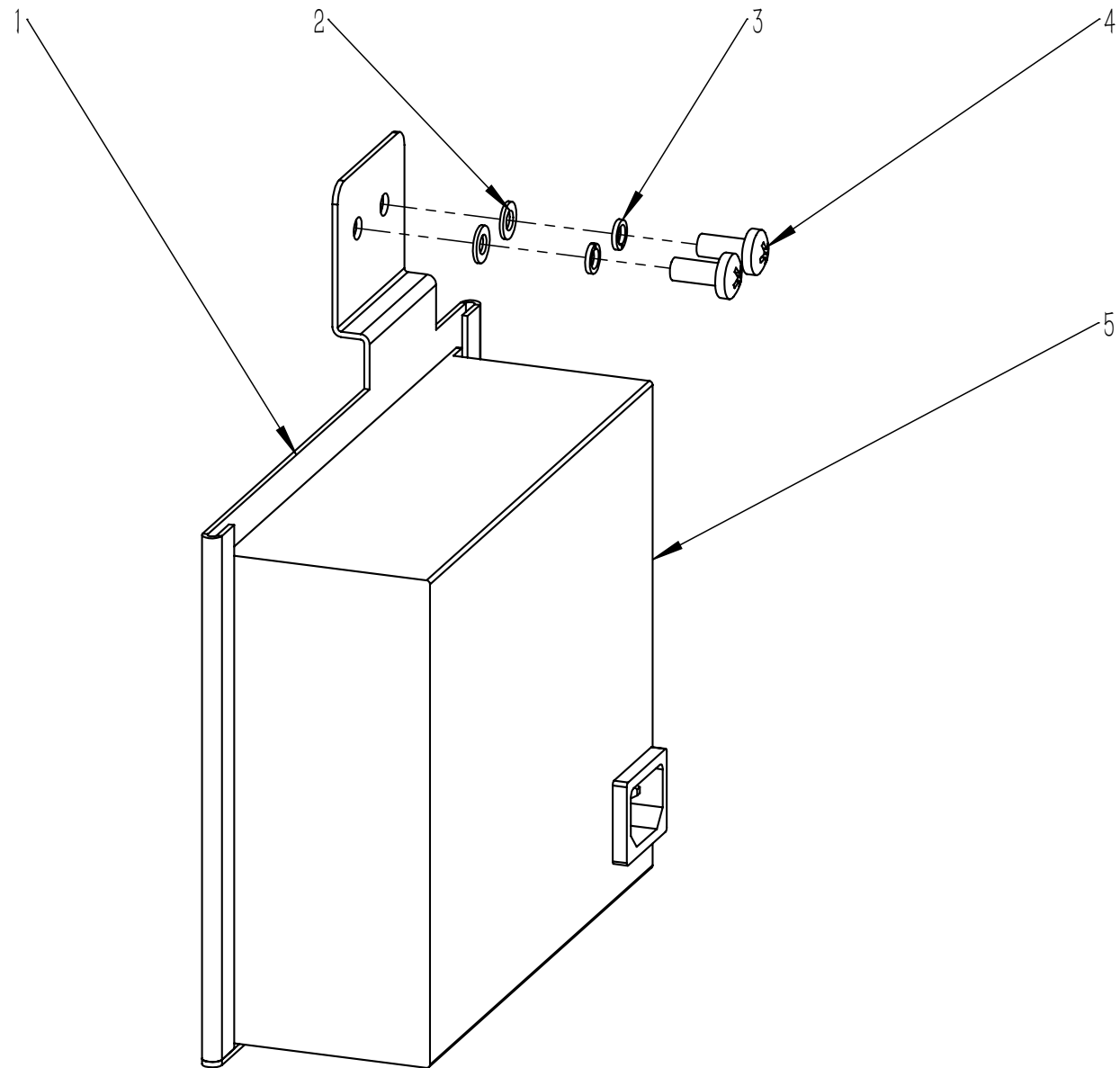
项目号 ITEM	零件号 P/N	数量 QTY	名称	DESCRIPTION
1	C020005	1	清水箱注水口盖子 D115	THREADED COVER Φ115
2	C020006	1	清水箱注水口滤网 D110	FILTER Φ110
3	N090004	2	橡胶搭扣 50	RUBBER HASP 50
4	N010056	2	外六角-M8x70-镀锌	SCREW M8x70 ZINC
5	N010098	8	圆头十字自攻螺丝-M4.2X9.5-不锈钢	SELF TAPPING SCREW M4.2x9.5 A2
6	N040013	4	弹垫-M8-镀锌	LOCK WASHER M8 ZINC
7	N030027	2	平垫-8x24x2-镀锌	WASHER 8x24x2 ZINC
8	W020269	1	压力开关组件-150x135x5-常开	PRESSURE SWITCH ASSEMBLY 150x135x5 N.O.
9	C010022	1	坐垫 T90	SEAT T90
10	N030006	4	平垫-8x16x1.6-镀锌	WASHER 8x16x1.6 ZINC
11	N010010	2	外六角-M8x50-镀锌	SCREW M8x50 ZINC
12	C020034	1	电器挡板 T90	COVER T90
13	E020096	1	脚踏开关 MSD129005	FOOT SWITCH MSD129005
14	N010135	1	外六角-M5x20-不锈钢	SCREW M5x20 A2
15	N010007	2	外六角-M8x25-镀锌	SCREW M8x25 ZINC
17	N020001	2	自锁螺母-M8-镀锌	LOCK NUT M8 ZINC
18	N010230	11	沉头十字-M5x16-镀黑锌	SCREW M5x16 BLACK ZINC PLATING
19	C020028	11	异形垫片 D5	WASHER Φ5
20	A050048B	1	脚踏垫 T90	BOTTOM PLATE T90
21	C010019	1	清水箱 T90	SOLUTION TANK T90
22	N010208	2	外六角-M5x12-不锈钢	SCREW M5x12 A2
23	N030040	2	平垫-5x15x1.2-不锈钢	WASHER 5x15x1.2
24	N010073	7	圆头十字螺丝-M5x16-镀锌	SCREW M5x16 ZINC
25	F060017	1	吸污管 D38x1000	SUCTION HOSE Φ38x1000
26	N090002	7	扎带固定座 23x16	SUPPORT 23x16
27	C020265	2	加强管托 D43	REINFORCED TUBE SUPPORT D43
28	F050006	1	卡箍 D33-57	SCREW CLAMP Φ33-57
29	N040023	2	弹垫-M5-不锈钢	LOCK WASHER M5
30	F060015	1	排污管 D38x1200	DRAINAGE PIPE Φ38x1200



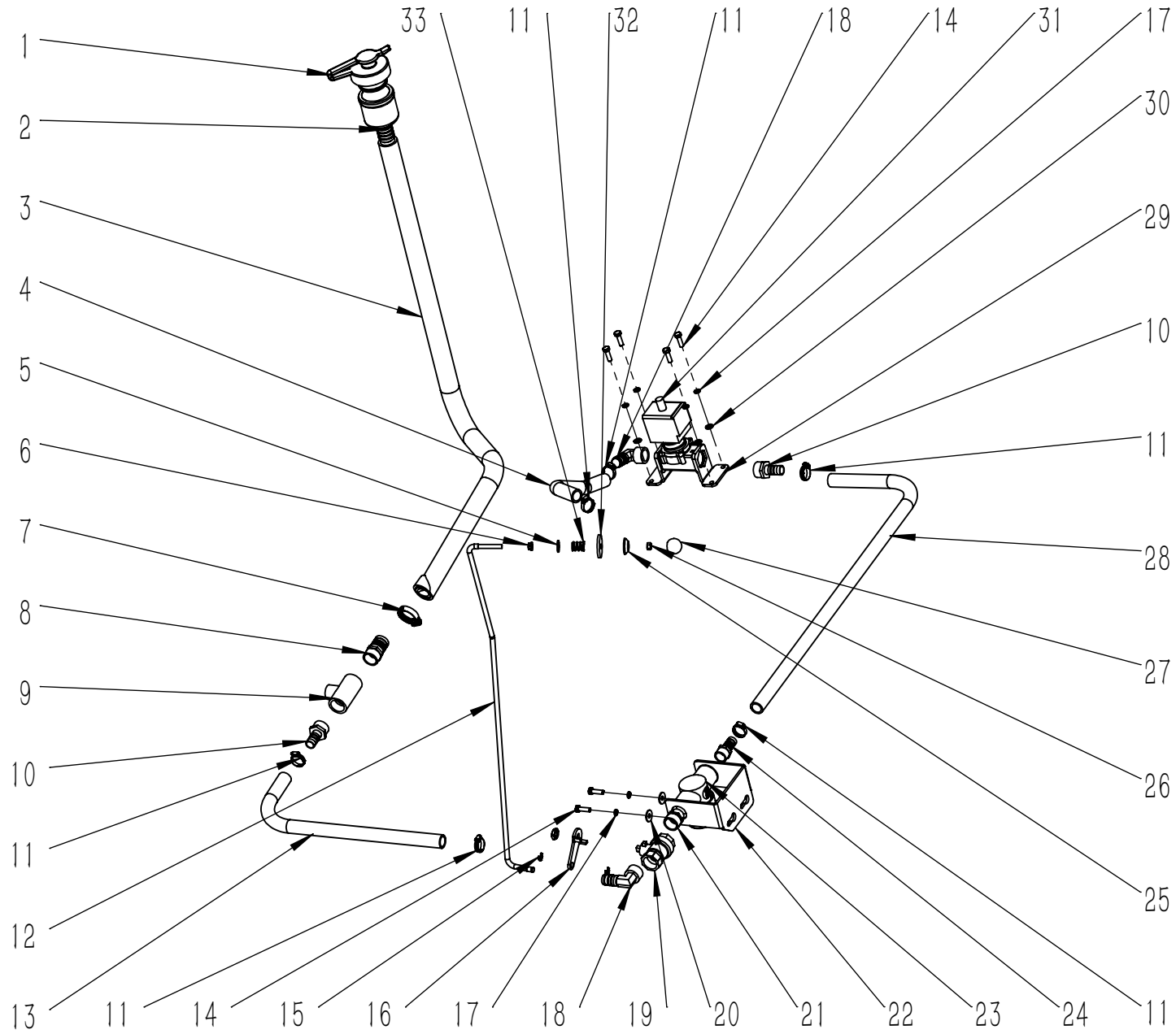
项目号 ITEM	零件号 P/N	数量 QTY	名称	DESCRIPTION
31	N010220	8	沉头内六角-M6x20-不锈钢发黑	SCREW M6x20 A2 BLACK
32	C020011	2	合页 40x14	HINGE 40x14
33	B060097	1	水箱拉线 L=510	CABLE L=510
34	N030040	1	平垫-5x15x1.2-不锈钢	WASHER 5x15x1.2 A2



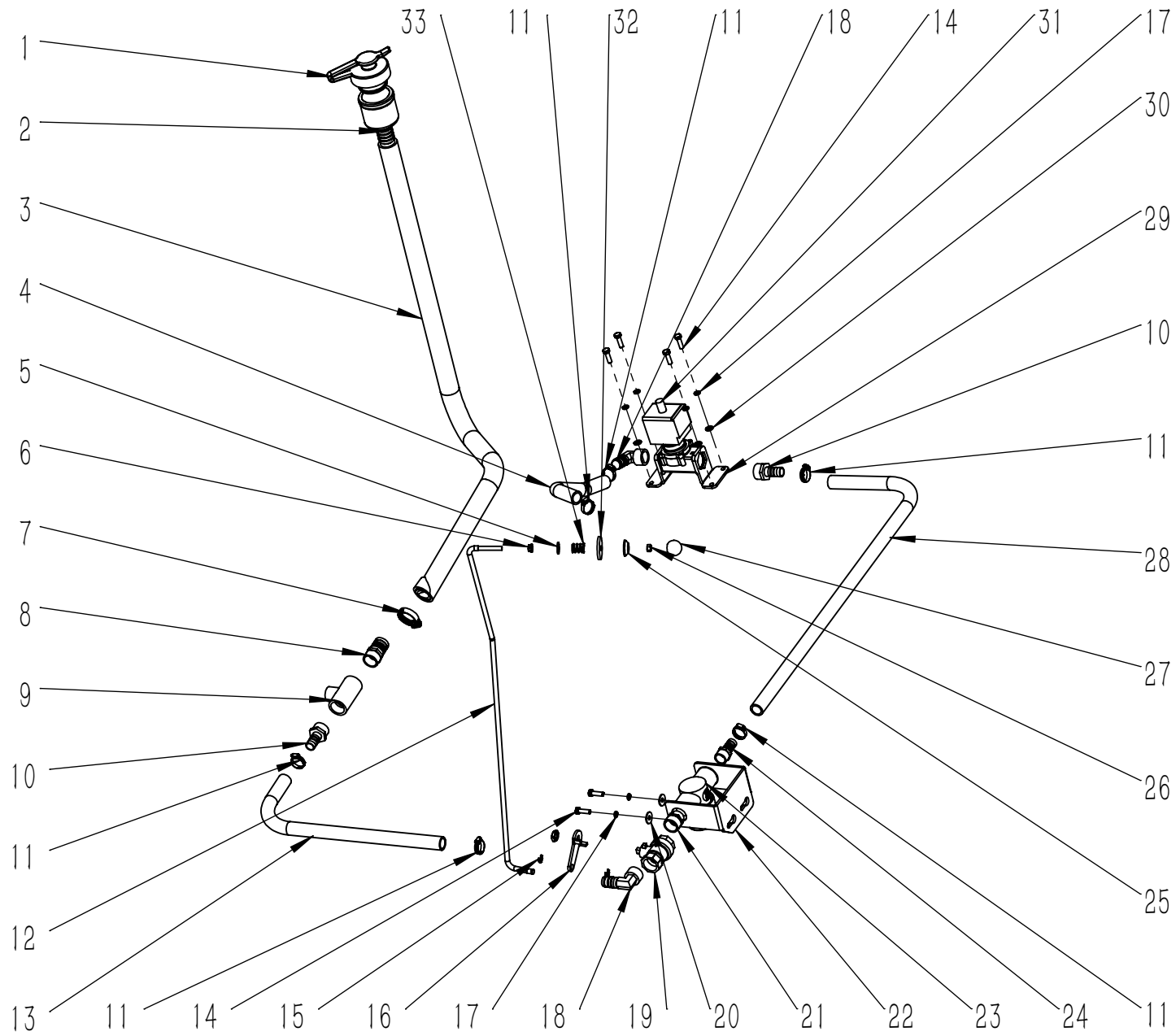
项目号 ITEM	零件号 P/N	数量 QTY	名称	DESCRIPTION
1	N020001	2	自锁螺母-M8-镀锌	LOCK NUT M8 ZINC
2	E050005	1	保险 80A	FUSE 80A
3	N020037	8	自锁螺母-M5-不锈钢	LOCK NUT M5 A2
4	N030016	5	平垫-5x10x1-不锈钢	WASHER 5x10x1
5	E050004	1	保险座 80A	FUSE HOLDER 80A
6	N020046	8	螺母-M5-不锈钢	NUT M5 A2
7	A030039A	1	电路安装板 230x230	CIRCUIT BOARD SUPPORT
8	N010135	2	外六角-M5x20-不锈钢	SCREW M5x20 A2
9	N010029	5	外六角-M5x16-不锈钢	SCREW M5x16 A2
10	N010165	4	外六角-M5x25-不锈钢	SCREW M5x25 A2
11	A030010	1	直流接触器支架 16x24x33	SUPPORT 16x24x33
12	E050095	1	直流接触器-24V-100A	RELAY 24V 100A
13	N040023	3	弹垫-M5-不锈钢	LOCK WASHER M5
14	W020409	1	控制器组件-KDS-T90/T90S	CONTROLLER ASSEMBLY KDS T90/90S



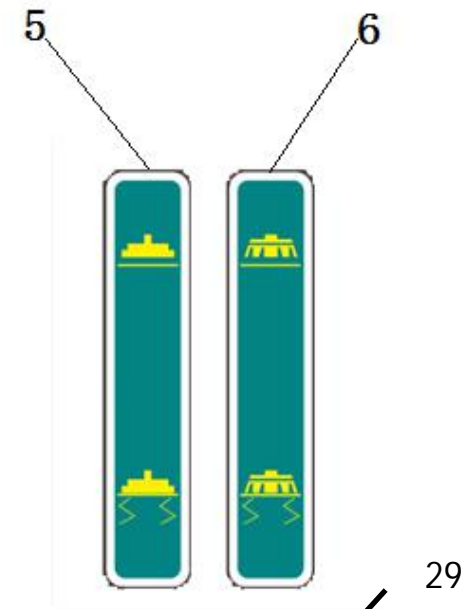
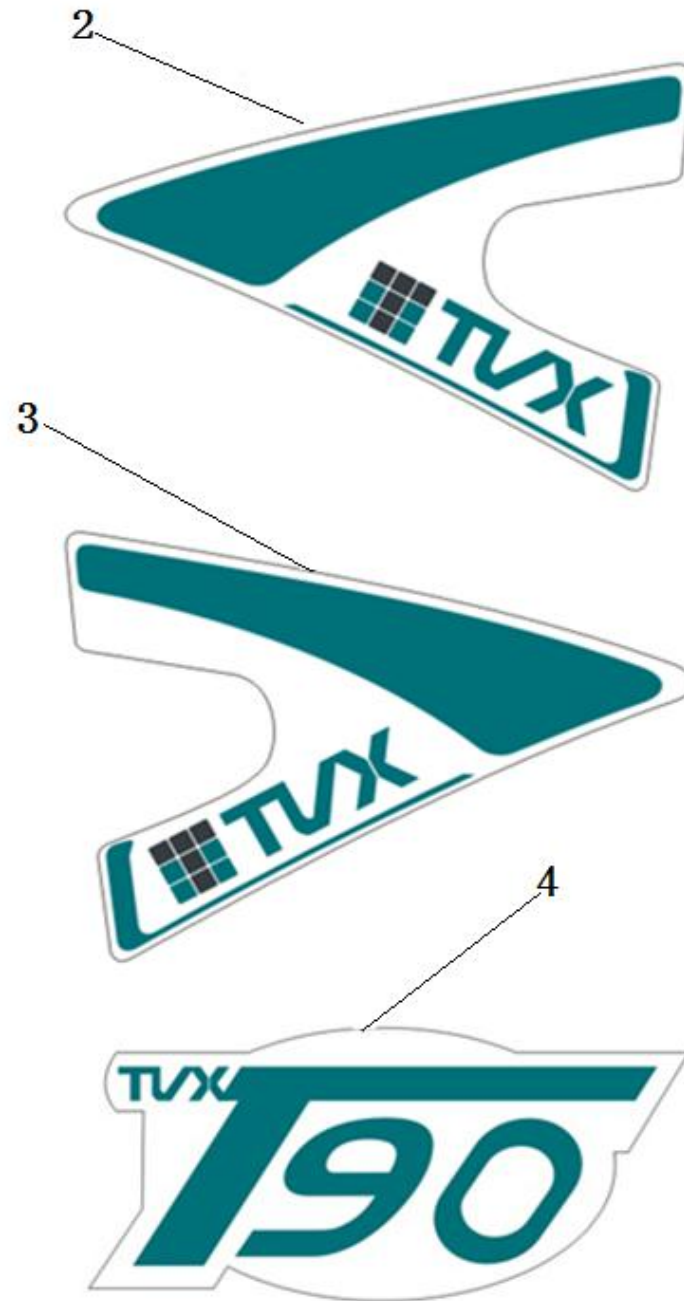
项目号 ITEM	零件号 P/N	数量 QTY	名称	DESCRIPTION
1	A060049	1	内置充电器安装支架 T90	BUILT-IN CHARGER MOUNTING BRACKET T90
2	N030016	2	平垫-5x10x1-不锈钢	WASHER 5x10x1
3	N040023	2	弹垫-M5-不锈钢	LOCK WASHER M5
4	N010112	2	十字盘头-M5x16-不锈钢	SCREW M5x16 A2
5	E040007	1	充电器组件-24V-15A-超威	CHARGER 24V15A CW
	E040007-A	1	充电器组件-24V-15A-AGM	CHARGER 24V15A FOR AGM BATTERY
	E040007-B	1	充电器组件-24V-15A-GEL	CHARGER 24V15A FOR GEL BATTERY
	E040007-C	1	充电器组件-24V-15A-LIT	CHARGER 24V15A FOR LIT BATTERY



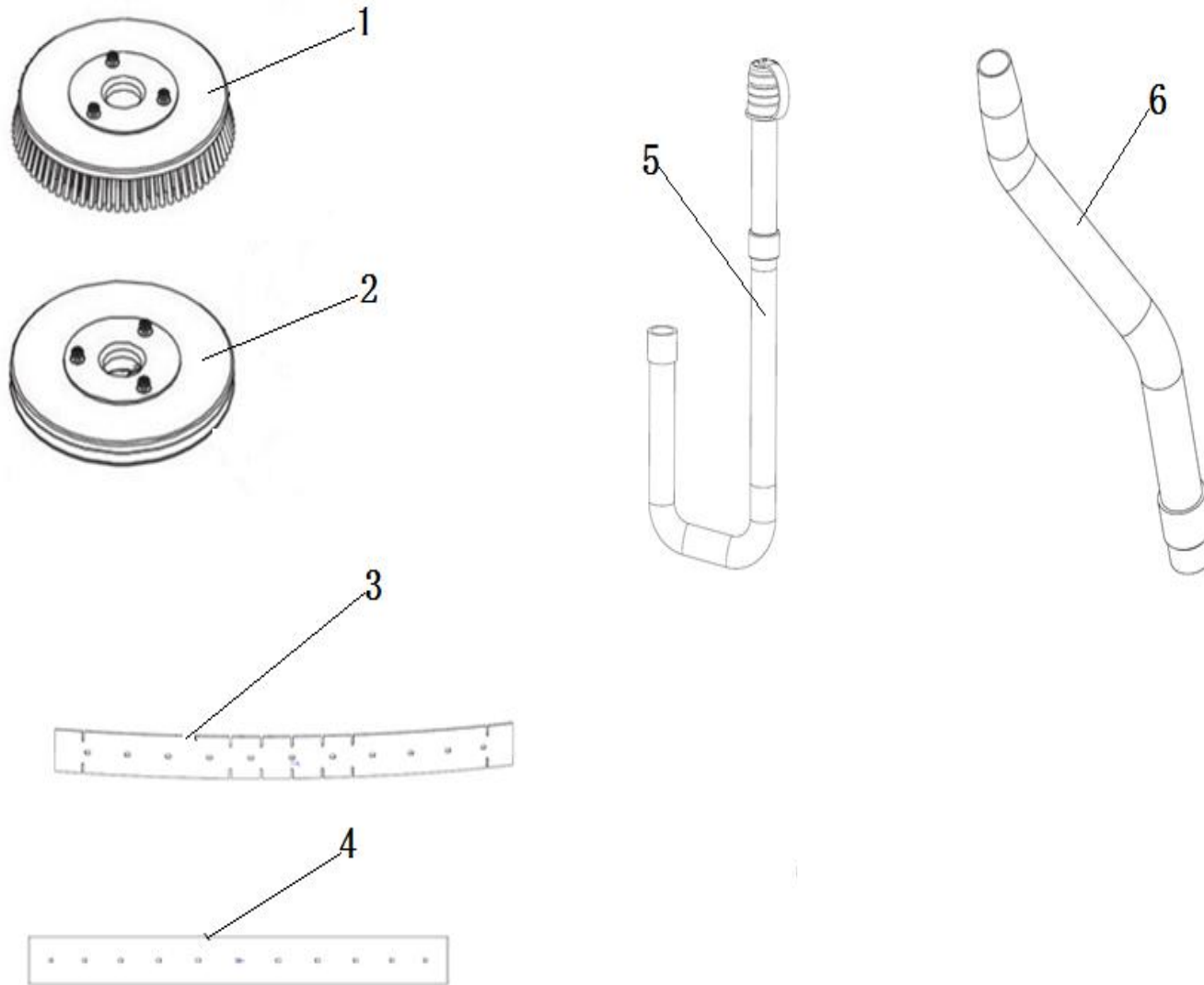
项目号 ITEM	零件号 P/N	数量 QTY	名称	DESCRIPTION
1	C030022	1	宝塔头盖帽	CAP
2	C030021	1	宝塔头 D21	FITTING ϕ 21
3	F050021.1	1	内嵌钢丝管-D=25-d=20-L=830	PVC STEEL WIRE PIPE D=18 D=13 L= 830
4	F050094.7	1	内嵌钢丝管-D=18-d=13-L=150	PVC STEEL WIRE PIPE D=18 D=13 L= 150
5	N030013	1	平垫-5x15x1.2-镀锌	WASHER 5x15x1.2 ZINC
6	N020004	1	法兰面螺母-M5-镀锌	NUT M5 ZINC
7	F050004	1	卡箍 D18-32	SCREW CLAMP ϕ 18-32
8	F020009	1	快速接头-1/2-D=19	CONNECTOR 1/2 D=19
9	F020013	1	三通内外丝 1/2T 型	CONNECTOR 1/2 T TYPE
10	F020002	2	快速接头 1/2	CONNECTOR 1/2
11	F050003	6	卡箍 D10-16	SCREW CLAMP ϕ 10-16
12	B060088	1	水位提杆 475 T90	ROD 475 T90
13	F050094.8	1	内嵌钢丝管-D=18-d=13-L=370	PVC STEEL WIRE PIPE D=18 D=13 L= 370
14	N010029	6	外六角-M5x16-不锈钢	SCREW M5x16 A2
15	N080006	2	卡簧 D5	CIRCLIP ϕ 5
16	A060017	1	球阀操纵手柄	COCK LEVER
17	N040023	6	弹垫-M5-不锈钢	LOCK WASHER M5
18	F020004	2	快速弯头 1/2	CONNECTOR BEND 1/2
19	F010001	1	蝶形球阀-1/2-D=10	BALL VALVE 1/2 D=10
20	N030040	2	平垫-5x15x1.2-不锈钢	WASHER 5x15x1.2
21	F020019	1	外丝接头-1/2-3/8-不锈钢	CONNECTOR 1/2-3/8 A2
22	A040035	1	过滤器支架 91	SUPPORT 91
23	F010004	1	过滤器 3/8	FILTER 3/8
24	F020003	1	快速接头-3/8-D=12-d=10	CONNECTOR 3/8 D=12 d=10
25	C020028	1	异形垫片 D5	WASHER ϕ 5
26	N020046	1	螺母-M5-不锈钢	NUT M5 A2
27	N100011	1	花型胶木手柄 M5x15	HANDWHEEL M5x15
28	F050094.9	1	内嵌钢丝管-D=18-d=13-L=635	PVC STEEL WIRE PIPE D=18 D=13 L= 635
29	A030012A	2	球阀支架 30x44	SUPPORT 30x44
30	N030016	4	平垫-5x10x1-不锈钢	WASHER 5x10x1



项目号 ITEM	零件号 P/N	数量 QTY	名称	DESCRIPTION
31	W020242	1	电磁阀组件-24V-10W	SOLENOID VALVE ASSEMBLY 24V 10W
32	N030039	1	尼龙垫片 6x30x3	WASHER 6x30x3 NYLON
33	B060001	1	压簧 1.5x12x15	SPRING 1.5x12x15



项目号 ITEM	零件号 P/N	数量 QTY	名称	DESCRIPTION
1	C040012	1	控制面板标签 T90	LABEL T90
2	C040003	1	机器左侧标签-T45-T55-T70-90	LEFT LABEL T45/T55/T70/90
3	C040004	1	机器右侧标签-T45-T55-T70-90	RIGHT LABEL T45/T55/T70/90
4	C040015	1	标识标签 T90	DECAL T90
5	C040035	1	刷盘升降标识绿	BRUSH UP AND DOWN DECAL GREEN
6	C040036	1	扒头升降标识绿	SQUEEGEE UP AND DOWN DECAL GREEN
7	M010007	1	纸箱-1440x760x1090-T70-T90	CARTON BOX 1440x760x1090
8	N090031	2	钥匙挂件	KEYCHAIN
9	P010004	1	保修卡	WARRANTY CARD
10	P010012	1	测试报告	TEST REPORT
11	M010015	1	塑料包装袋 1400x700x1000	PLASTIC PACKAGE BAG 1400x700x1000
12	M020008	9	三角挡块 50x50x100	TRIANGLE BLOCK 50x50x100
13	M020010	1	木托盘-1440x760x120-T7090L	PALLET T70/90L 1440x760x120
14	C030016	2	刷盘防溅条 110x610	RUBBER SKIRT 110x610
15	M010008	1	纸箱上盖-1460x800x100- T70	CARTON BOX COVER 1460x800x100
16	M010014	1	说明书自封袋 340x240mm	PLASTIC PACKAGE BAG 340x240mm
17	M020007	12	支撑护角 50x50x100	ANGLE BEAD 50x50x100
18	M020011	6	木条-40x40x1070-T70-90	BATTEN T70/90 40x40x1070
19	M020024	4	三角挡块 50x50x70	TRIANGLE BLOCK 50x50x70
20	HC10005	20	P 钉	P NAIL
21	HC10017	12	封箱钉 35mmx18mm	SEALING BOX NAIL 35mmx18mm
22	N010160	8	沉头十字自攻螺丝-ST4x40-发黑	SELF TAPPING SCREW ST4x40 BLACK
23	HC10015	2	尼龙编织带长 545x35mm	NYLON BRAIDED TAPE LONG 545x35
24	HC10016	2	尼龙编织带短 175x35mm	NYLON BRAIDED TAPEN SHORT 175x35
25	N030040	4	平垫-5x15x1.2-不锈钢	WASHER 5x15x1.2
26	N010159	8	沉头十字自攻螺丝-ST4x25-发黑	SELF TAPPING SCREW ST4x25 BLACK
27	M020021	1	斜坡-600x400x20-T70-90	T70/90 RAMP 600x400x20
28	M010009	1	纸盒-820x200x120-扒头 760	760 SQUEEGEE CARTON BOX 820x200x120
29	C040322	1	电器挡板标贴 T90	ELECTRICAL BAFFLE LABEL T90



项目号 ITEM	零件号 P/N	数量 QTY	名称	DESCRIPTION
1	N150008	1	刷盘-21 英寸-PP0.5	21"BRUSH PP 0.5
2	N150009	1	针盘 21 英寸	21"PAD HOLDER
3	C030014LAT	1	前刮条-橡皮-3x50x785	FRONT SQUEEGE BLADE RUBBER LATEX 3x50x785
4	C030015LAT	1	后刮条-橡皮-4.5x53x835	REAR SQUEEGE BLADE RUBBER LATEX 4.5x53x835
5	F060015	1	排污管 D38x1200	DRAINAGE PIPE Φ 38x1200
6	F060017	1	吸污管 D38x1000	SUCTION HOSE Φ 38x1000

项目号 ITEM	零件号 P/N	名称	数量 QTY	DESCRIPTION
1	C030161	刷盘防溅条-无痕-灰色-T90 单刷	1	RUBBER SKIRT T90
2	C030014LAT	前刮条-橡皮-3x50x785-LAT	1	FRONT SQUEEGE BLADE RUBBER LATEX 3x50x785
3	C030015LAT	后刮条-橡皮-4.5x53x835-LAT	1	REAR SQUEEGE BLADE RUBBER LATEX 4.5x53x835
4	C030014LTX	前刮条--耐油-3x50x785LTX	1	FRONT SQUEEGE BLADE RUBBER LINATEX 3x50x785
5	C030015LTX	前耐油胶条 3x50x785LTX	1	FRONT SQUEEGE BLADE RUBBER LINATEX 3x50x785
6	C030014PU	后刮条-PU-耐油-4.5X53X835	1	REAR SQUEEGE BLADE RUBBER PU 4.5x53x835
7	C030015PU	后耐油胶条 4.5x53x835PU	1	REAR SQUEEGE BLADE RUBBER PU 4.5x53x835
8	C030014PRI	前橡皮刮条-PRI-50x785	1	FRONT SQUEEGE BLADE RUBBER PRIMOTHANE 3x50x785
9	C030015PRI	前橡皮刮条-PRI-50x835-PRI	1	RAER SQUEEGE BLADE RUBBER PRIMOTHANE 4.5x53x835
10	N150012	刷盘 T-21 英寸-PP0.28	2	21" BRUSH PP0.28