



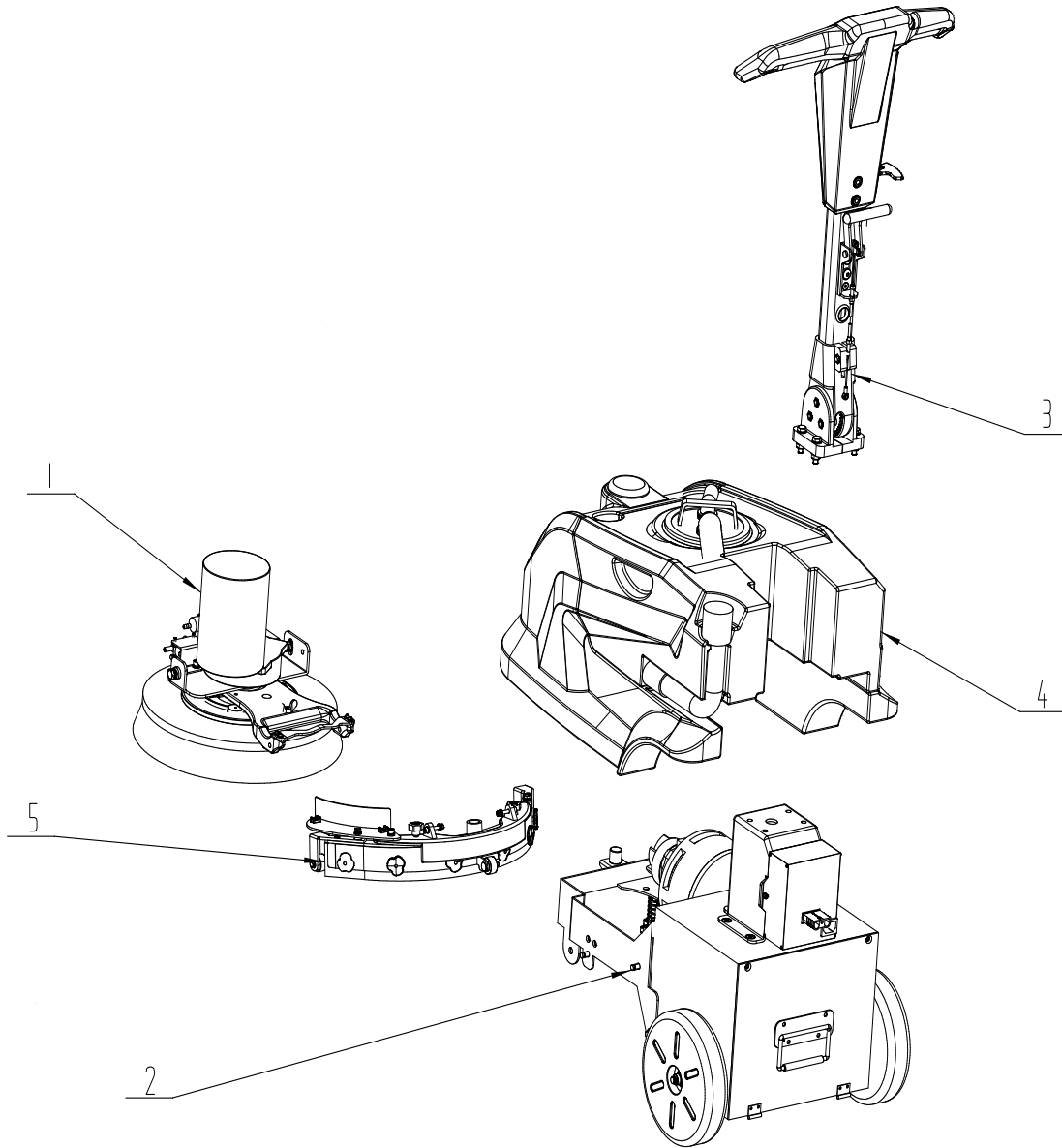
手推式洗地机 T16B
Scrubber Dryer T16B

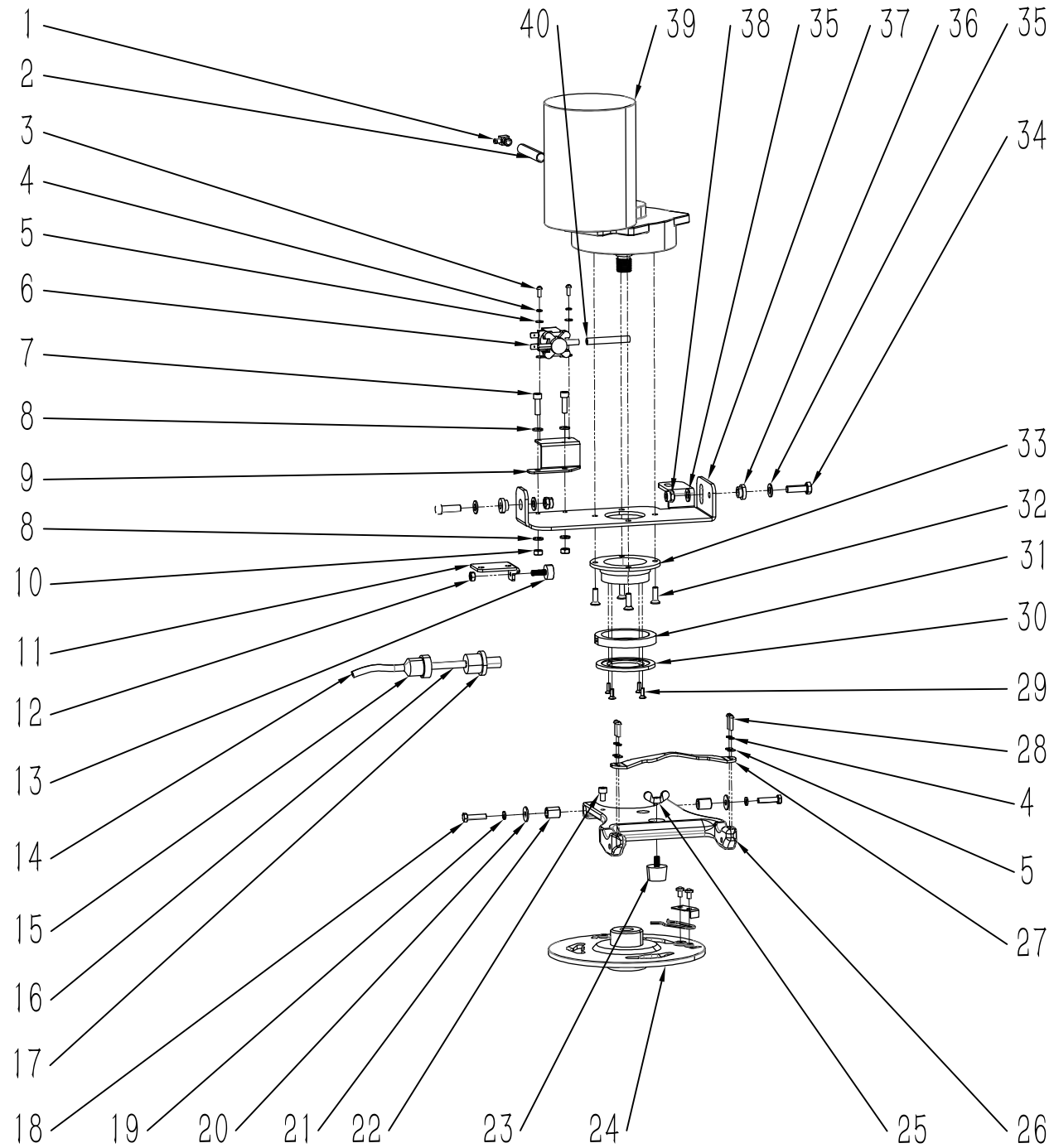
Issued in Feb.2024
V01



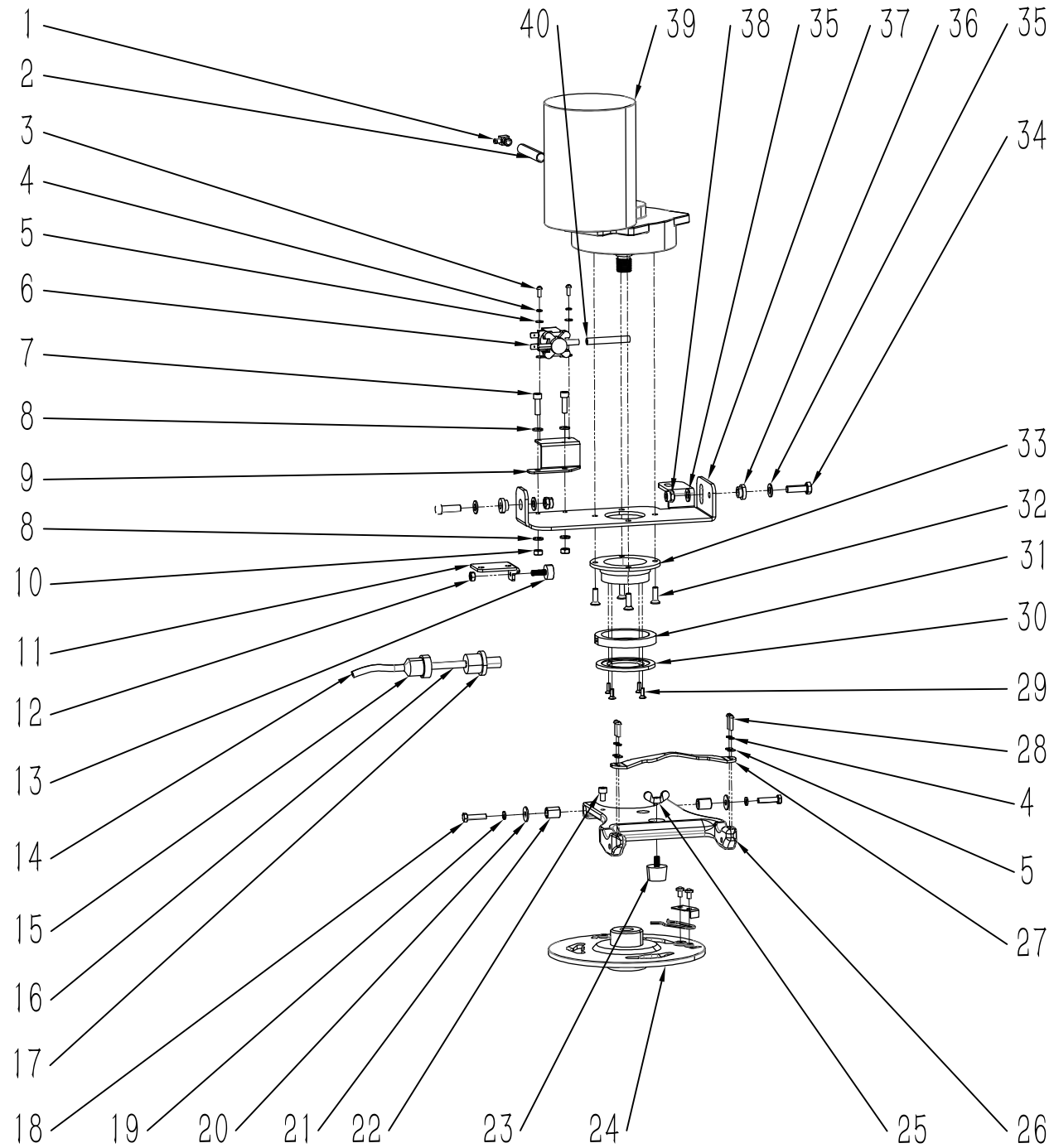
目 录

1. 机头组件·····	1—4
NOSE ASSEMBLY	
2. 底座架组件·····	5—12
FRAME ASSEMBLY	
3. 手柄盒组件·····	13—22
HANDLE BOX ASSEMBLY	
4. 水箱体组件·····	23—24
WATER TANK ASSEMBLY	
5. 扒头组件·····	25—28
SQUEEGEE ASSEMBLY	
6. 包装组件·····	29
ACCESSORIES	
7. 选配件·····	30
SELECT ACCESSORIES	

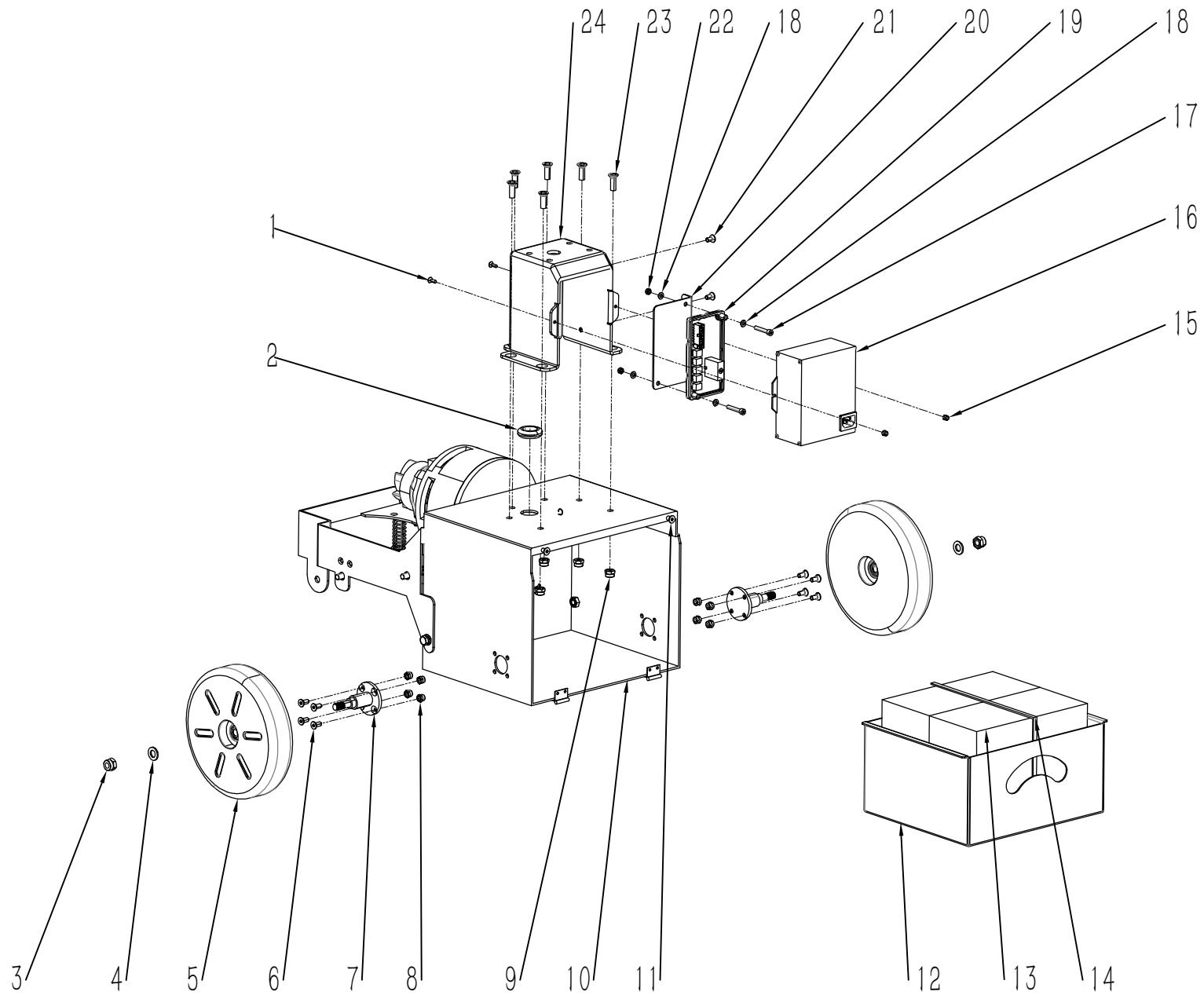




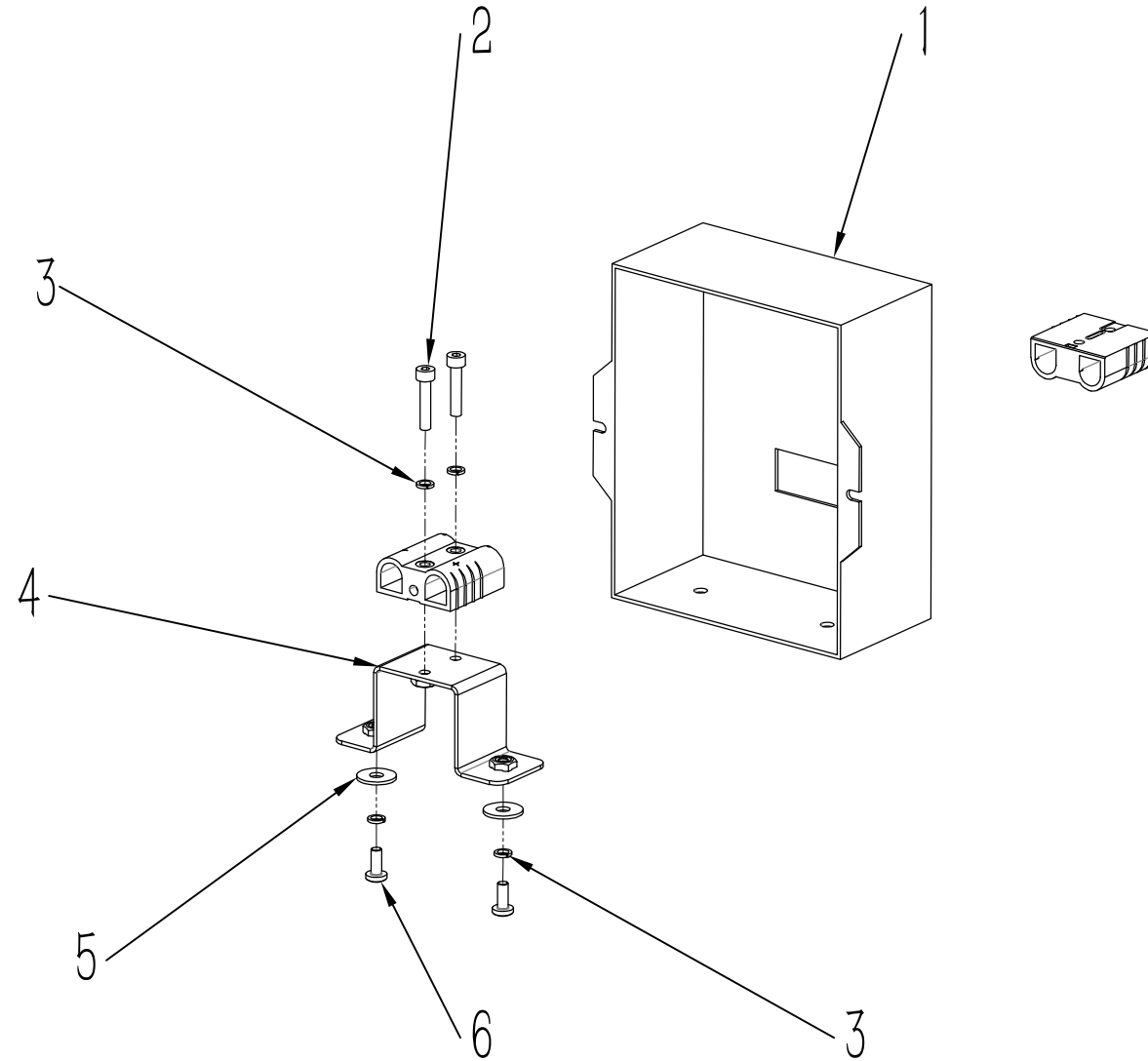
项目号 ITEM	零件号 P/N	数量 QTY	名称	DESCRIPTION
1	F020039	1	变径宝塔接头-10-6-T15	REDUCER PAGODA CONNECTOR-10-6-T15
2	F050065.6	1	硅胶水管 D=14 d=9 L=50	SILICONE HOSE D=14 d=9 L=50
3	N010070	2	圆头十字-M4x10-不锈钢	SCREW M4x10 A2
4	N040019	6	弹垫-M4-不锈钢	LOCK WASHER M4
5	N030053	6	平垫-4x9x1-不锈钢	WASHER 4x9x1 ZINC
6	E010005	1	电磁阀-FPDF-88 24V-T15	SOLENOID VALVE FPDF-88 24V T15
7	N010057	2	内六角圆柱螺丝-HM6x20-不锈钢	SCREW HM6x20 A2
8	N030024	4	平垫-6x12x1.6-不锈钢	WASHER 6x12x1.6 A2
9	A060033	1	电磁阀支架 T15	SOLENOID VALVE SUPPORT T15
10	N020005	2	六角螺母-M6-不锈钢	六角螺母-M6-不锈钢
11	A040093	1	限位块 T15	LIMIT BLOCK T15
12	N020022	1	螺母 M6 镀锌	NUT M6 ZINC
13	C020280	1	橡胶减震垫 D18xH8xM6	RUBBER DAMPING PAD D18xH8xM6
14	F050064.7	1	硅胶软管-D8xd5 L=40	SILICONE HOSE D8xd5 L=40
15	F030085	1	可拆卸过滤器 T150PRO	REMOVABLE HEPA FILTER
16	F050064.8	1	硅胶软管-D8xD5-L=210	SILICONE HOSE D8xd5 L=210
17	F020098	1	快接水阀（公头）	QUICK WATER VALVE (MALE HEAD) 1/4
18	N010020	2	外六角-M6X25 镀锌	SCREW M6x25 ZINC
19	N040001	2	弹垫-M6-镀锌	LOCK WASHER M6 ZINC
20	N030008	2	平垫-6x18x1.6-镀锌	WASHER 6x18x1.6 ZINC
21	B020039	2	铜套-13×8.2×15-T15	BUSHING 13×8.2×15 T15
22	N010264	1	圆头内六角 M6X10 滚花镀黑锌	SCREW M6x10
23	C020222	1	橡胶减震垫 D25X17	RUBBER DAMPING PAD D25X17
24	W020077	1	刷盘锁紧器组件-左	LOCKER ASSEMBLY-LEFT
25	N020057	1	蝶形螺母-M6-不锈钢	WING NUT M6 A2
26	A250005	1	扒头支架 T16	SUPPORT T16
27	A250006	1	扒头提拉下支架	PULL DOWN THE SUPPORT
28	N010211	4	十字槽盘头螺钉 M4x16	SCREW M4x16 A2



项目号 ITEM	零件号 P/N	数量 QTY	名称	DESCRIPTION
29	N010047	4	沉头十字-M4x12-不锈钢	SCREW M4x12 A2
30	A040090	1	底部盖板 T15	BOTTOM COVER T15
31	A050075	1	扒头支架安装套 T15	GRILLING HEAD BRACKET MOUNTING SLEEVE T15
32	N010016	4	沉头内六角-M6x20-不锈钢	SCREW M6x20 A2
33	A050074	1	连接套 T15	CONNECTION SLEEVE T15
34	N010007	2	外六角-M8x25-镀锌	SCREW M8x25 ZINC
35	N030006	4	平垫-8x16x1.6-镀锌	WASHER 8x16x1.6 ZINC
36	B020038	2	机头安装铜套 T15	HEAD INSTALLTION COPPER SLEEVE T15
37	A040191	1	电机安装板 T16	MOTOR MOUNTING PLATE T16
38	N020001	2	自锁螺母-M8-镀锌	LOCK NUT M8 ZINC
39	W020234	1	刷盘电机组件-24V-250W-T15B	BRUSH MOTOR ASSEMBLY 24V 250W T15B
40	F050064.9	1	硅胶软管-D8xD5-L=55	SILICONE HOSE D8xd5 L=55

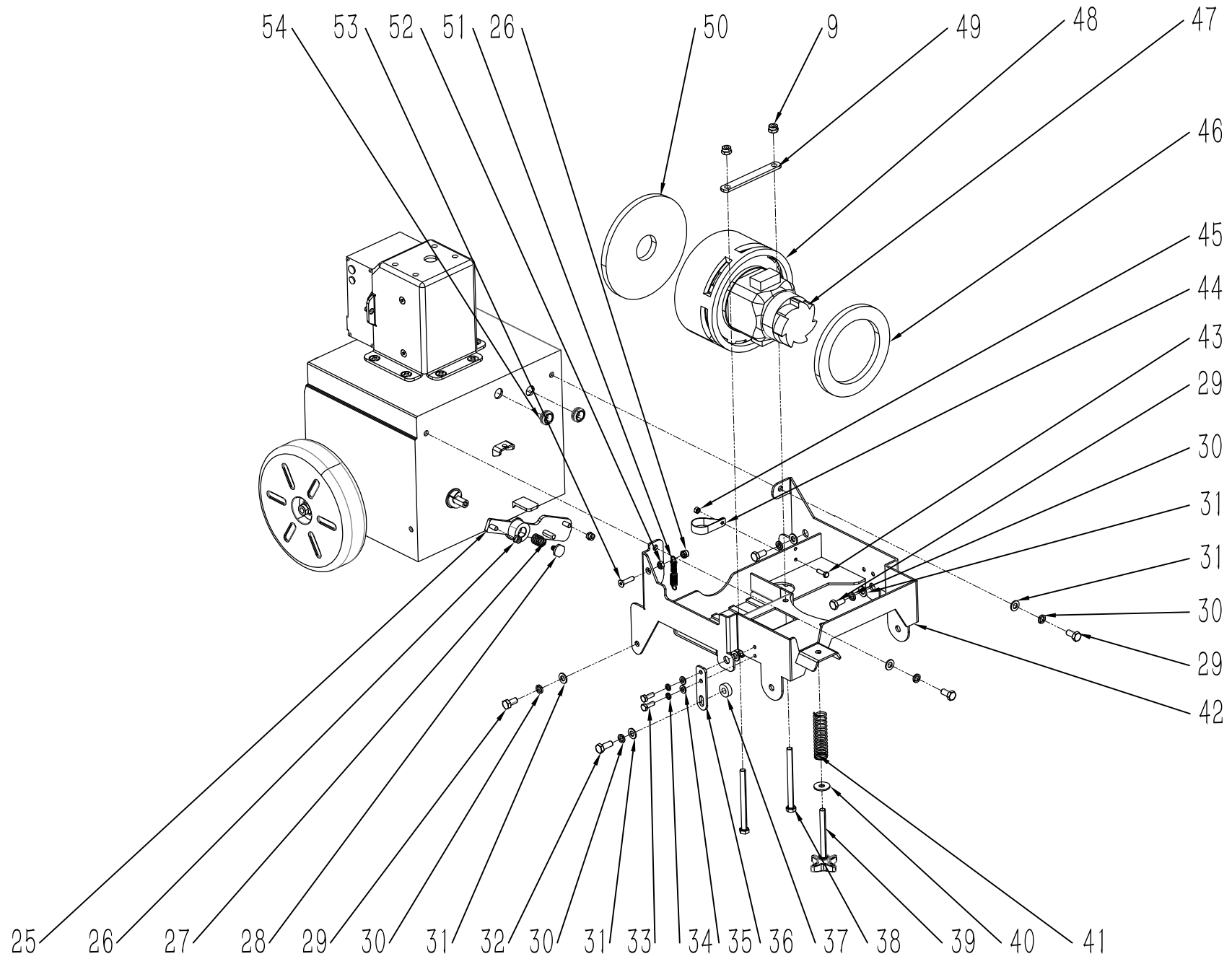


项目号 ITEM	零件号 P/N	数量 QTY	名称	DESCRIPTION
1	N010299	2	沉头十字螺钉-M4X12-不锈钢发黑	SCREW-M4x12-A2 BLACK
2	E080118	1	线圈护套 22X3	COIL SHEATH 22x3
3	N020002	2	自锁螺母 M10 镀锌	LOCK NUT M10 ZINC
4	N030004	2	平垫 10x20x2 镀锌	WASHER 10x20x2 ZINC
5	C020221	2	无驱轮-200X50-T15	DRIVELESS WHEEL 200x50 T15
6	N010236	8	沉头内六角 M6x14 不锈钢	SCREW M6X14 A2
7	B060287	2	轮轴	WHEEL AXLE
8	N020006	8	自锁螺母 M6 不锈钢	LOCK NUT M6 A2
9	N020001	8	自锁螺母 M8 镀锌	LOCK NUT M8 ZINC
10	A030211	1	电池盒-T15-加长款	BATTERY BASE T15
11	N010255	2	沉头内六角-M6x10-镀黑锌	SCREW M6x10 BLACK ZINC
12	A010243	1	电池座 T16	BATTERY CASE T16
13	E040149	2	铅酸电池-12V-39AH	LEAD-ACID BATTERIES AGM CARBONE 12V 39AH
14	N090044	1	电线绑带 T45E	CABLE TIE T45E
15	N020068	2	自锁螺母-M4-不锈钢发黑	LOCK NUT M4 A2 BLACK
16	E050115	1	充电器-24V-5A-英文	BATTERY CHARGER 24V 5A ENGLISH
17	N010246	2	内六角圆柱头 M5X30 不锈钢	SCREW M5x30 A2
18	N030016	4	平垫 5x10x1 不锈钢	WASHER 5x10x1 A2
19	W020484	1	控制器组件-大能-T15B PLUS	CONTROLLER ASSEMBLY DALA T15B PLUS
20	A030098	1	控制器安装板 T15	CONTROLLER MOUNTING PLATE T15
21	N010154	2	沉头内六角-M6x12-不锈钢	SCREW M6x12 A2
22	N020037	2	自锁螺母-M5-不锈钢	LOCK NUT M5 A2
23	N010019	6	沉头内六角-M8x18-镀锌	SCREW M8x18 ZINC
24	A060075	1	齿轮安装座 T15B	GEAR MOUNT T15

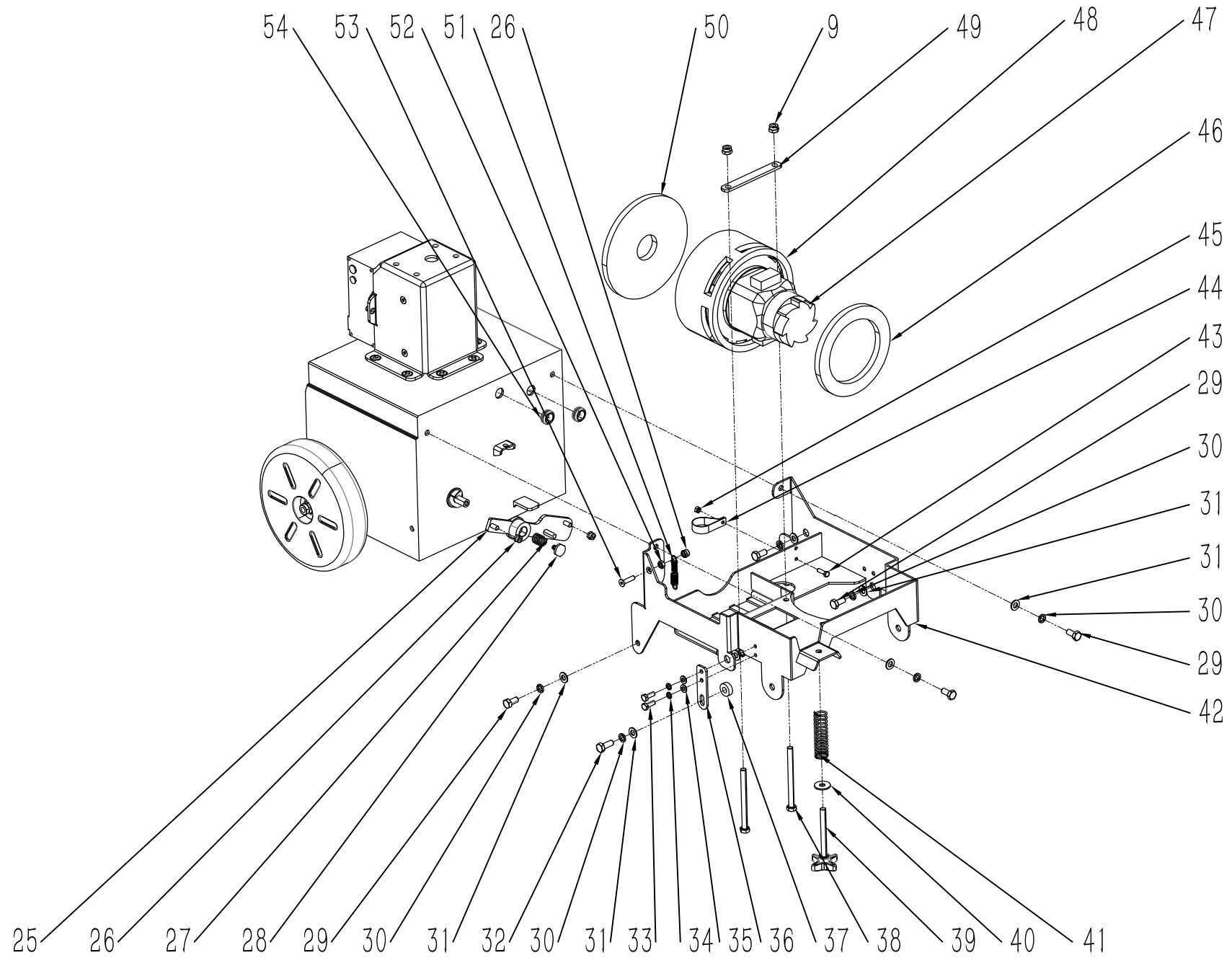


外置充电器组件-T16B

项目号 ITEM	零件号 P/N	数量 QTY	名称	DESCRIPTION
1	A170027	2	充电器壳	CHARGER CASE
2	N010308	2	内六角圆柱螺丝-HM4X20-不锈钢	SCREW HM4x20 A2
3	N040019	4	弹垫-M4-不锈钢	LOCK WASHER M4
4	A260021	1	充电口支架	CHARGER STAND
5	N030040	2	大平垫 5X15X1.2 不锈钢	WASHER 5x15x1.2 A2
6	N010070	2	圆头十字-M4X10-不锈钢	SCREW M4x10 A2

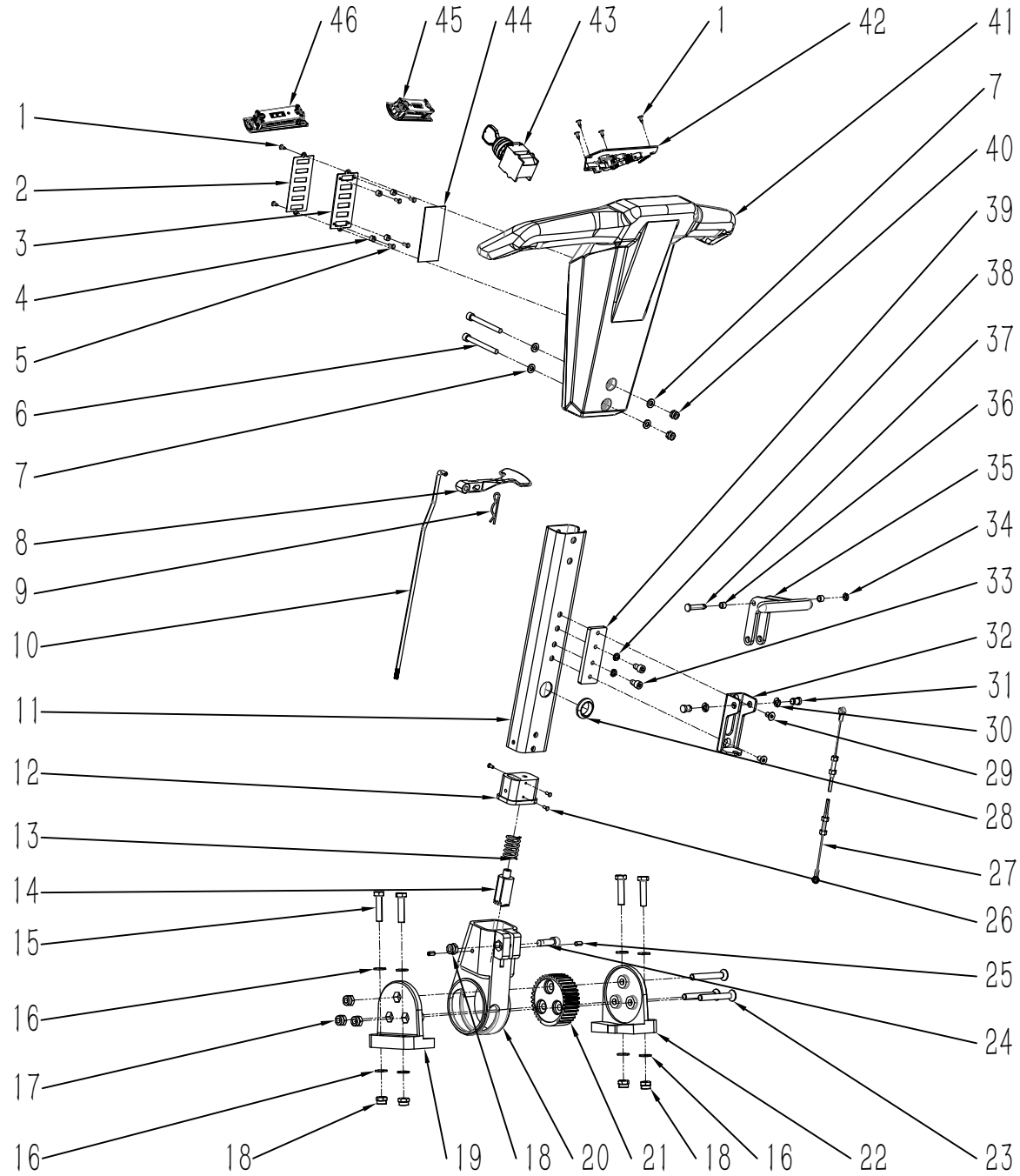


项目号 ITEM	零件号 P/N	数量 QTY	名称	DESCRIPTION
25	A190020	1	扒头提拉板	HEAD LIFT BOARD
26	N020012	3	自锁螺母-M6-镀锌	LOCK NUT M6 ZINC
27	B090029	1	提拉压簧	PULL AND PRESS SPRING
28	B060294	1	扒头定位螺丝	POCKET HEAD POSITIONING SCREWS
29	N010121	7	外六角-M8x16-镀锌	SCREW M8x16 ZINC
30	N040013	8	弹垫-M8-镀锌	LOCK WASHER-M8 ZINC
31	N030006	8	平垫-8x16x1.6-镀锌	WASHER-8x16x1.6 ZINC
32	N010034	1	外六角-M8x20-镀锌	SCREW M8x20 ZINC
33	N010005	2	外六角-M6x16-镀锌	SCREW M6x16 ZINC
34	N040001	2	弹垫-M6-镀锌	LOCK WASHER M6 ZINC
35	N030007	2	平垫-6x12x1.6-镀锌	WASHER 6x12x1.6 ZINC
36	A020053	1	机头调节支架 T15	HEAD ADJUSTMENT BRACKET BRACKET T15
37	B050073	1	尼龙垫片 9x20x7	NYLON WASHER 9x20x7
38	N010258	2	外六角 M8x100 镀锌	SCREW M8x100 A2
39	N100037	1	调节手柄 M8x70	ADJUSTING HANDLE M8x70
40	N030028	1	平垫-8x24x2-不锈钢	WASHER-8x24x2 A2
41	B070033	1	机头压簧-D2xD20x75-T15	HEAD COMPRESSION SPRING D2XD20X75 T15
42	A010235	1	底座架	BASE FRAM
43	N010029	1	外六角 M5x16 不锈钢	SCREW M5x16 A2
44	N080057	1	卡箍 (Φ32)	CLAMP
45	N020046	1	螺母 M5 不锈钢	NUT M5 A2
46	C020463	1	电机消音棉-下	MOTOR SILENCER COTTON-DOWN
47	W020235	1	真空电机组件-24V-250W-T15	VACUUM MOTOR ASSEMBLY 24V 250W T15
48	C020462	1	电机消音棉-中	MOTOR SILENCER COTTON-MEDIUM
49	A020052	1	真空电机安装板	SUCTION SUPPORT T15
50	C020461	1	电机消音棉-上	MOTOR SILENCER COTTON-UP
51	B060012	1	钢条拉簧	STEEL BAR SPRING
52	N020005	1	六角螺母-M6-不锈钢	NUT M6 A2



项目号 ITEM	零件号 P/N	数量 QTY	名称	DESCRIPTION
53	N010017	1	沉头内六角 M6X25 镀黑锌	SCREW M8x18 ZINC BLACK
54	E080121	2	线圈护套 14X2.5	COIL SHEATH 14x2.5 T15

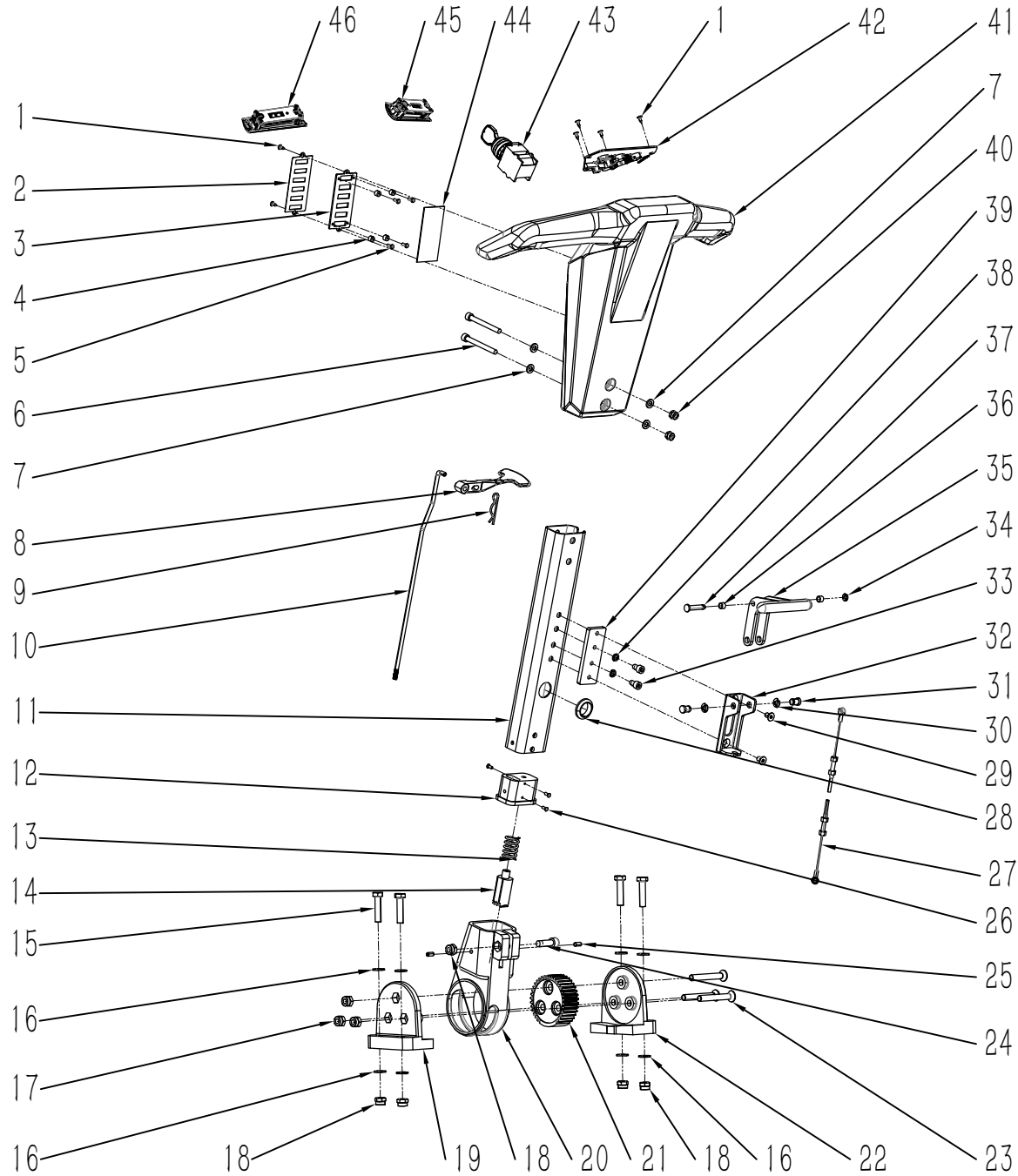
欧版



欧版

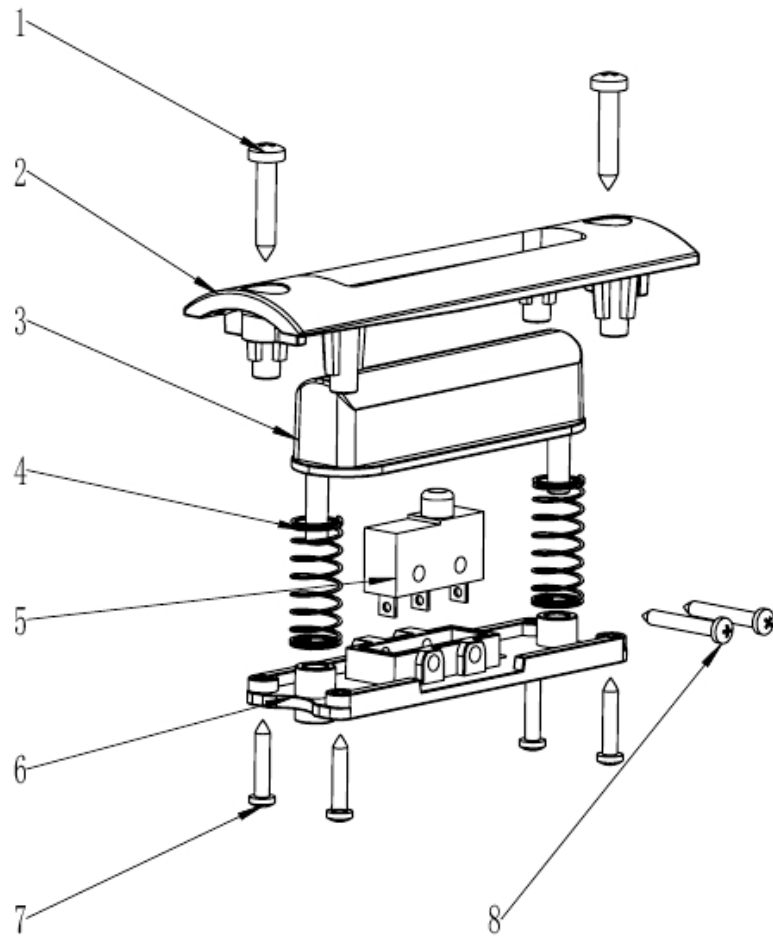
项目号 ITEM	零件号 P/N	数量 QTY	名称	DESCRIPTION
1	N010239	6	沉头十字自攻-ST2.9×10-不锈钢发黑	SCREW ST2.9X10 A2 BLACK
2	C040281	1	电量显示板面贴 T15	POWER DISPLAY BOARD SURFACE STICKER T15
3	A030097	1	电量灯安装板 T15	POWER LIGHT MOUNTING PLATE T15
4	C030067	4	隔柱-7x3x5-T15	SEPARATOR 7x3x5 T15
5	N010257	4	十字盘头-M3x8-不锈钢	SCREW M3x8 A2
6	N010262	2	内六角圆柱头-M6x60-不锈钢	SCREW M6x60 A2
7	N030024	4	平垫-6x12x1.6-不锈钢	WASHER 6x12x1.6 A2
8	D010038	1	角度调节拨块 T15	ANGLE ADJUSTMENT DIAL T15
9	N100035	1	R 型弹簧插销 D2x40	BOLT TYPE R
10	B060162	1	角度调节拉杆 T15	ANGLE ADJUSTMENT LEVER T15
11	B060285	1	铝杆 T16	PUTTER T16
12	B130010	1	齿轮固定座	GEAR HOLDER
13	B090028	1	齿轮压缩弹簧	GEAR COMPESSION SPRING
14	B050114	1	角度调节小齿轮	ANGLE ADJUSTMENT PINION
15	N010008	4	外六角-M8x35-镀锌	SCREW M8x35 ZINC
16	N030006	8	平垫-8x16x1.6-镀锌	WASHER 8x16x1.6 ZINC
17	N020024	4	自锁螺母-M8-不锈钢	LOCK NUT M8 A2
18	N020001	4	自锁螺母-M8-镀锌	LOCK NUT M8 ZINC
19	B130012	1	齿轮下安装座-左	LOWER GEAR MOUNTING SEAT-L
20	B130011	1	铝杆固定座	ALUMINUM ROD SEAT
21	B050117	1	角度调节大齿轮	ANGLE ADJUSTMENT GESR
22	B130013	1	齿轮下安装座-右	LOWER GEAR MOUNTING SEAT-R
23	N010074	3	内六角沉头 M8x60	HEXAGONAL COUNTERSUNK HEAD BOLT M8x60
24	N010283	1	内六角圆柱头 M8x25	SCREW M8x25 A2
25	N010433	2	内六角平端紧钉螺钉 M5x12	SCREW M5x12 A2
26	N010103	3	沉头十字螺丝 M3x8-不锈钢	SCREW M3x8 A2
27	B060278	1	扒头拉线	PULL THE STRINGS
28	N090130	1	孔护套 内径 φ 20	HOLE SHEATH φ20

欧版

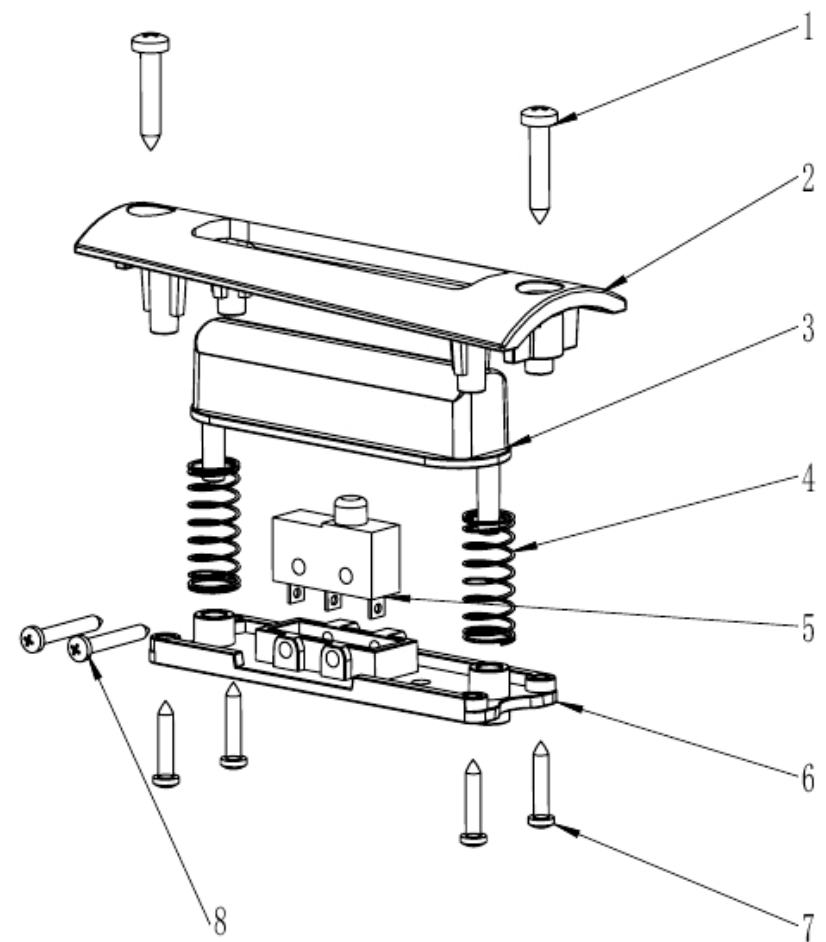


欧版

项目号 ITEM	零件号 P/N	数量 QTY	名称	DESCRIPTION
29	N010255	2	内六角沉头 M6X10	SCREW M6x10 A2
30	N080055	2	E 型卡簧 $\phi 6$	TYPE E CIRCLIP $\phi 6$
31	B070082	2	把手定位销	HANDLE DOWEL
32	A250008	1	扒头提升把手支架	HANDLE BRACKET
33	N010264	2	圆头内六角 M6x10 滚花镀黑锌	ROUND HEAD HEXAGON M6x10
34	N080056	1	E 型卡簧 $\phi 5$	TYPE E CIRCLIP $\phi 5$
35	A270005	1	提拉把手	PULL HANDLE
36	B010133	2	尼龙轴套 $\phi 8 \times \phi 6.2 \times 5.5$	NYLON SLEEVE $\phi 8 \times \phi 6.2 \times 5.5$
37	B060286	1	挂线轴	BOBBIN
38	N040001	2	弹垫 $\phi 6$	SPRING WASHER $\phi 6$
39	A170019	1	预埋铁	EMBEDDED IRON
40	N020006	2	自锁螺母-M6-不锈钢	LOCK NUT M6 A2
41	C010119	1	手柄盒-T16 欧版	HANDLE BAR T16
42	W020420	1	控制面板组件-大能- T15B	CONTROL PANEL ASSEMBLY- T15B
43	W020013	1	钥匙开关组件 双开	KEY SWITCH ASSEMBLY
44	E030041	1	电量显示板 T15	POWER DISPLAY BOARD T15
45	W030113	1	驱动开关小组件 右	DRIVE SWITCH WIDGET RIGHT
46	W030112	1	驱动开关小组件 左	DRIVE SWITCH WIDGET LEFT
47	E080241	1	线束 T16B	HARNESS T16B



W030113



W030112 |

W030113

项目号 ITEM	零件号 P/N	数量 QTY	名称	DESCRIPTION
1	N010320	2	十字盘头自攻螺丝-ST3.0×16-镀黑锌	SCREW ST3.0x16 BLACK ZINC
2	C020303	1	驱动开关面板-右	DRIVE SWITCH PANEL RIGHT
3	C020300	1	驱动开关-按键	DRIVE SWITCH BUTTON
4	B070037	2	弹簧-线径 0.5-外径 8-长度 20-65 锰钢- 镀锌	SPRING WIRE DIAMETER0.5 OUTER DIAMETER 8 LENGTH 20-65STEEL-ZINC
5	E020075	1	蘑菇头微动开关-5A-125-250V	MUSHROOM HEAD MICRO SWITCH 5A 125 250V
6	C020301	1	驱动开关-底座	DRIVE SWITCH BASE
7	N010318	4	十字盘头自攻螺丝-ST2.3×12-不锈钢	SCREW ST2.3x12 BLACK A2
8	N010319	2	十字盘头自攻螺丝-ST2.3×16-不锈钢	SCREW ST2.3x16 BLACK A2

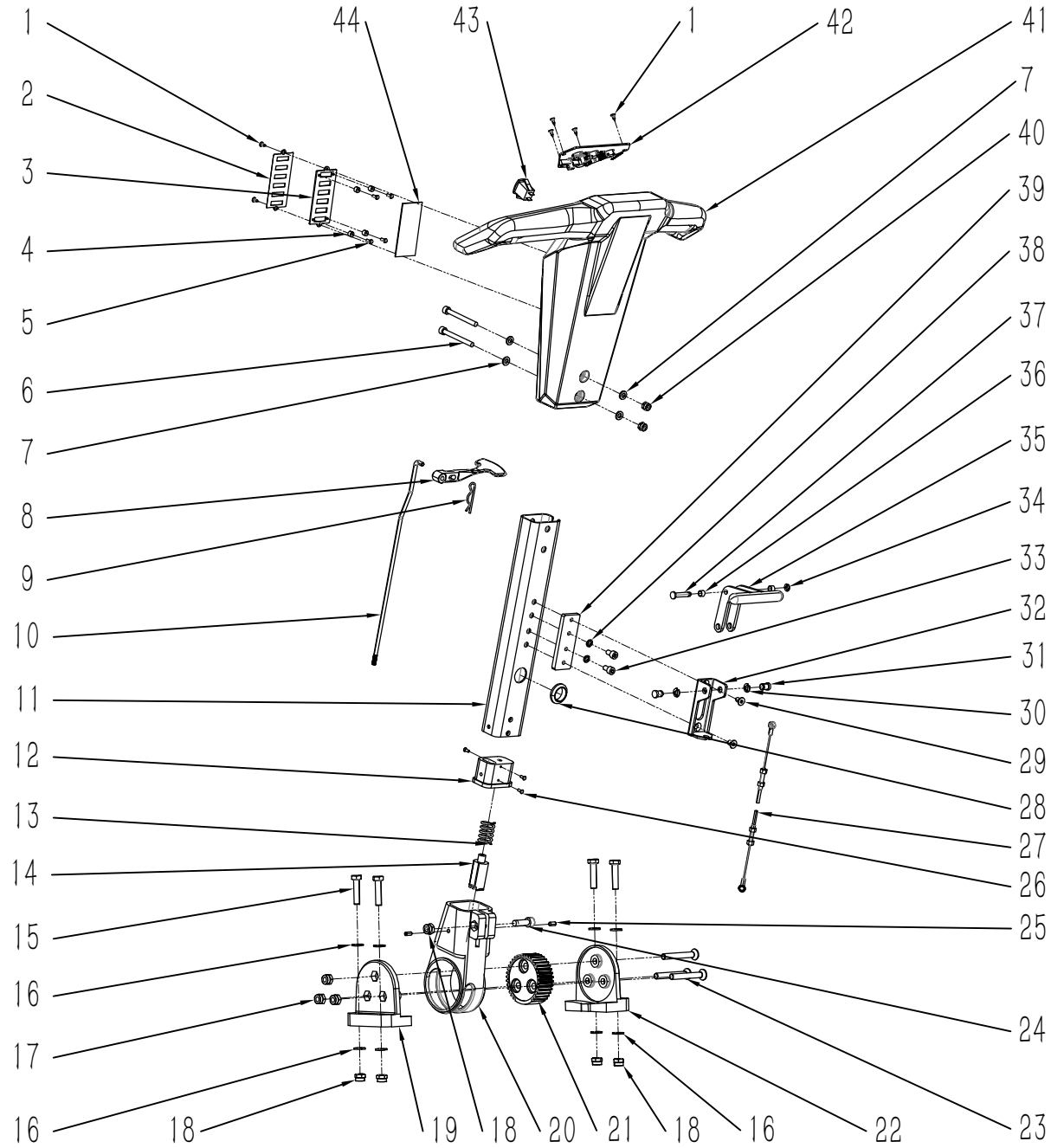
W030112

项目号 ITEM	零件号 P/N	数量 QTY	名称	DESCRIPTION
1	N010320	2	十字盘头自攻螺丝-ST3.0×16-镀黑锌	SCREW ST3.0x16 BLACK ZINC
2	C020302	1	驱动开关面板-左	DRIVE SWITCH PANEL LEFT
3	C020300	1	驱动开关-按键	DRIVE SWITCH BUTTON
4	B070037	2	弹簧-线径 0.5-外径 8-长度 20-65 锰钢- 镀锌	SPRING WIRE DIAMETER0.5 OUTER DIAMETER 8 LENGTH 20-65STEEL-ZINC
5	E020075	1	蘑菇头微动开关-5A-125-250V	MUSHROOM HEAD MICRO SWITCH 5A 125 250V
6	C020301	1	驱动开关-底座	DRIVE SWITCH BASE
7	N010318	4	十字盘头自攻螺丝-ST2.3×12-不锈钢	SCREW ST2.3x12 BLACK A2
8	N010319	2	十字盘头自攻螺丝-ST2.3×16-不锈钢	SCREW ST2.3x16 BLACK A2

裸机

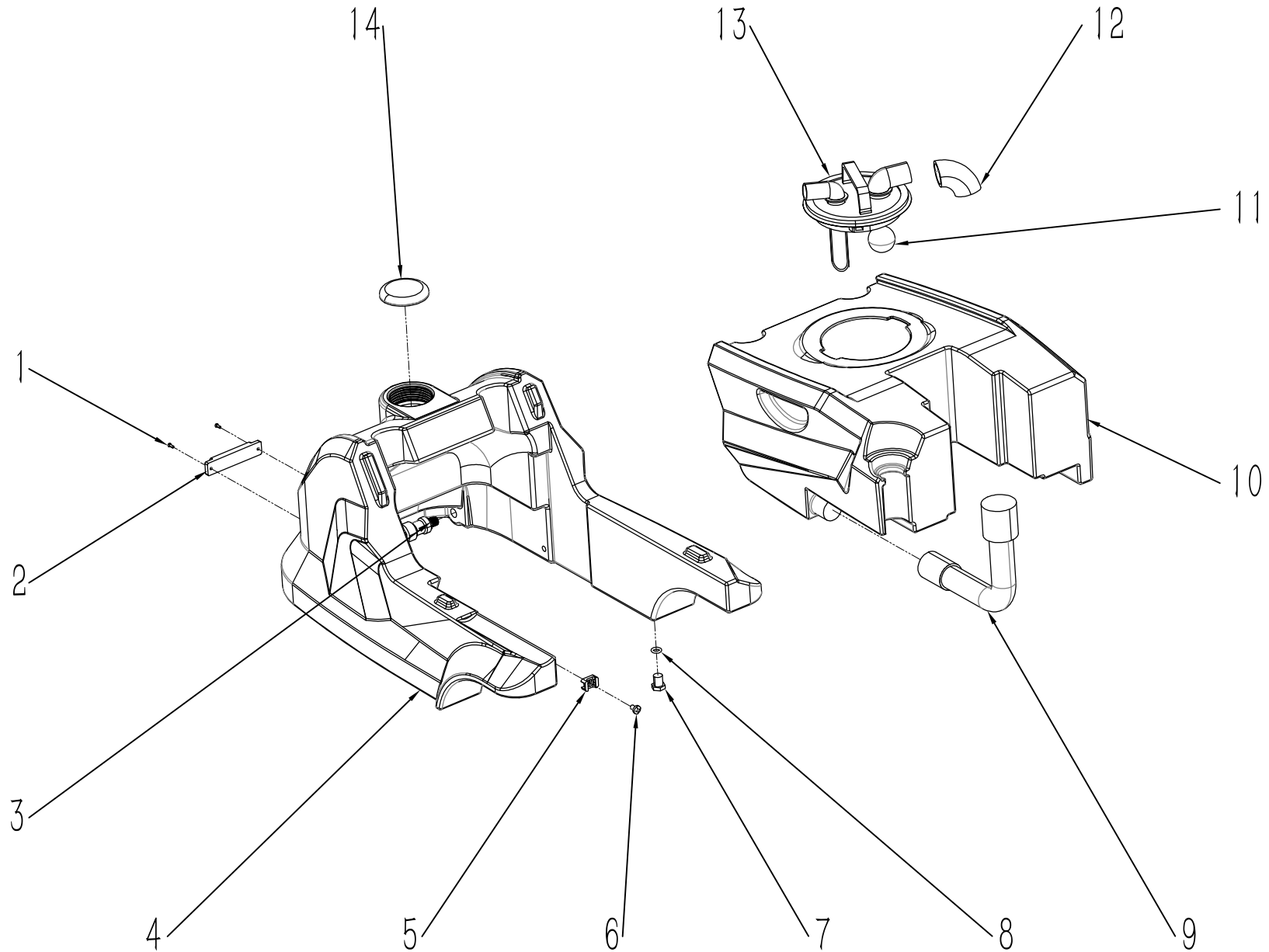
项目号 ITEM	零件号 P/N	数量 QTY	名称	DESCRIPTION
1	N010239	6	沉头十字自攻-ST2.9×10-不锈钢发黑	SCREW ST2.9X10 A2 BLACK
2	C040281	1	电量显示板面贴 T15	POWER DISPLAY BOARD SURFACE STICKER T15
3	A030097	1	电量灯安装板 T15	POWER LIGHT MOUNTING PLATE T15
4	C030067	4	隔柱-7x3x5-T15	SEPARATOR 7x3x5 T15
5	N010257	4	十字盘头-M3x8-不锈钢	SCREW M3x8 A2
6	N010262	2	内六角圆柱头-M6x60-不锈钢	SCREW M6x60 A2
7	N030024	4	平垫-6x12x1.6-不锈钢	WASHER 6x12x1.6 A2
8	D010038	1	角度调节拨块 T15	ANGLE ADJUSTMENT DIAL T15
9	N100035	1	R 型弹簧插销 D2x40	BOLT TYPE R
10	B060162	1	角度调节拉杆 T15	ANGLE ADJUSTMENT LEVER T15
11	B060285	1	铝杆 T16	PUTTER T16
12	B130010	1	齿轮固定座	GEAR HOLDER
13	B090028	1	齿轮压缩弹簧	GEAR COMPESSION SPRING
14	B050114	1	角度调节小齿轮	ANGLE ADJUSTMENT PINION
15	N010008	4	外六角-M8x35-镀锌	SCREW M8x35 ZINC
16	N030006	8	平垫-8x16x1.6-镀锌	WASHER 8x16x1.6 ZINC
17	N020024	4	自锁螺母-M8-不锈钢	LOCK NUT M8 A2
18	N020001	4	自锁螺母-M8-镀锌	LOCK NUT M8 ZINC
19	B130012	1	齿轮下安装座-左	LOWER GEAR MOUNTING SEAT-L
20	B130011	1	铝杆固定座	ALUMINUM ROD SEAT
21	B050117	1	角度调节大齿轮	ANGLE ADJUSTMENT GESR
22	B130013	1	齿轮下安装座-右	LOWER GEAR MOUNTING SEAT-R
23	N010074	3	内六角沉头 M8x60	HEXAGONAL COUNTERSUNK HEAD BOLT M8x60
24	N010283	1	内六角圆柱头 M8x25	SCREW M8x25 A2
25	N010433	2	内六角平端紧钉螺钉 M5x12	SCREW M5x12 A2
26	N010103	3	沉头十字螺丝 M3x8-不锈钢	SCREW M3x8 A2
27	B060278	1	扒头拉线	PULL THE STRINGS
28	N090130	1	孔护套 内径 φ 20	HOLE SHEATH φ20

裸机

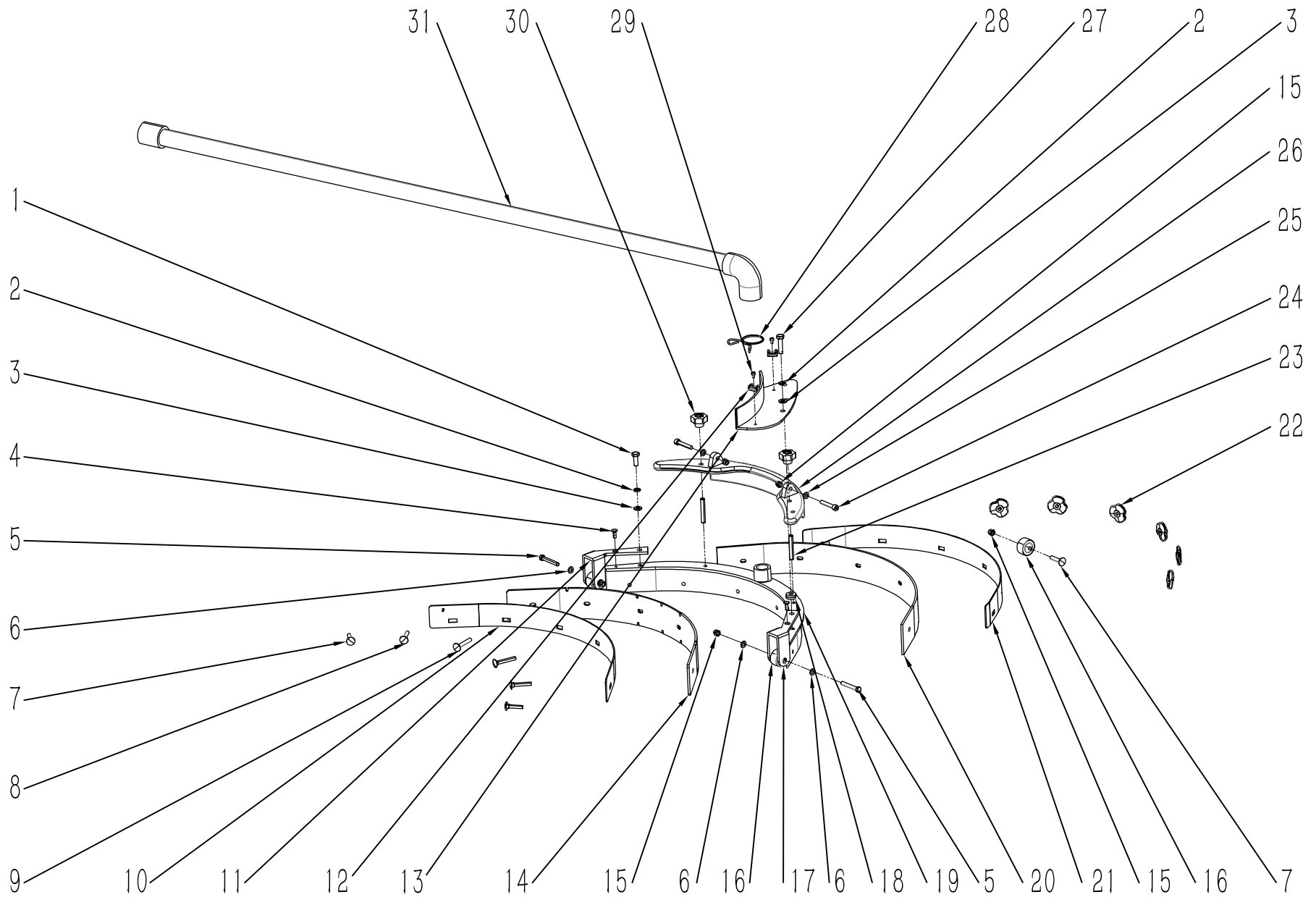


裸机

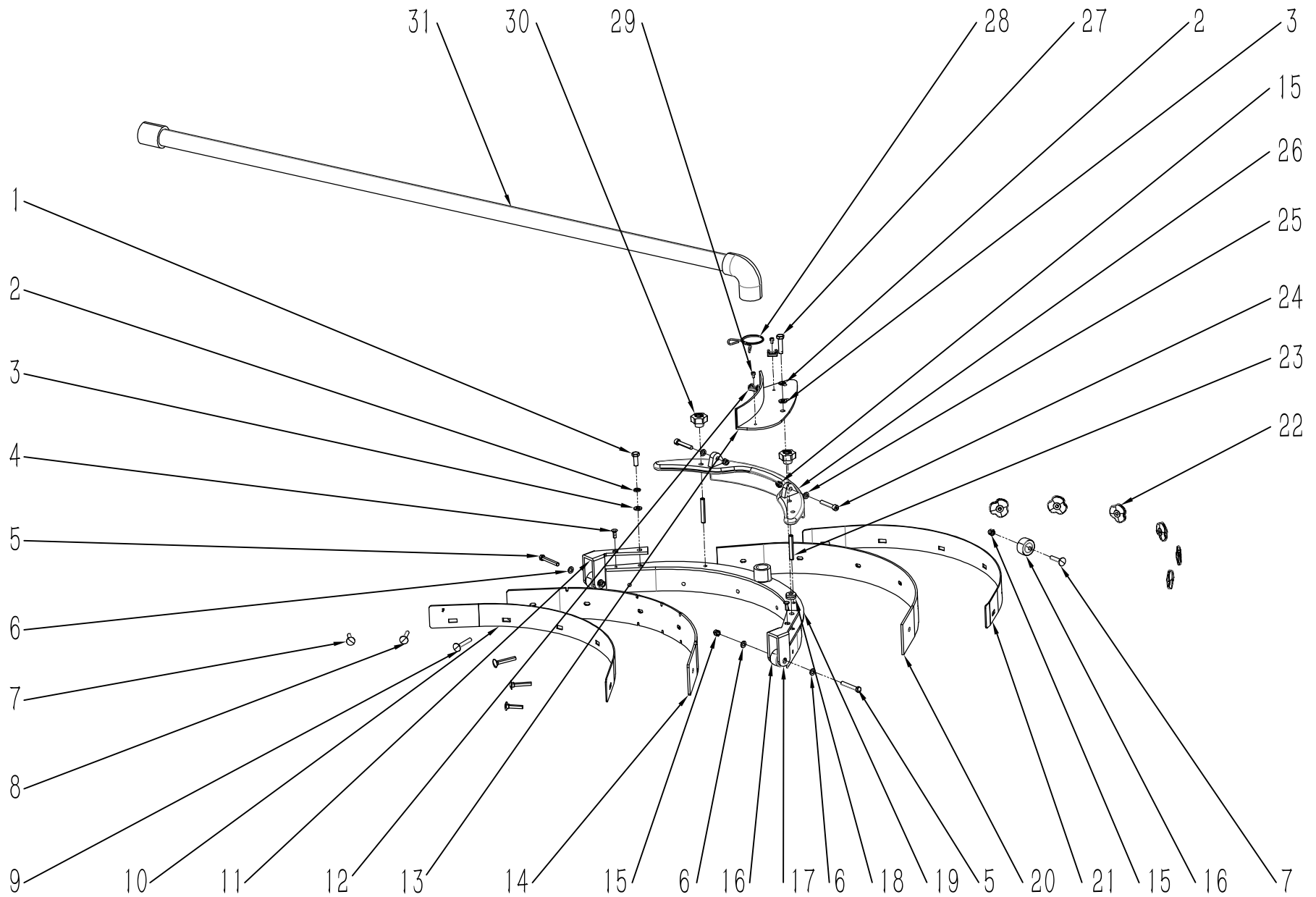
项目号 ITEM	零件号 P/N	数量 QTY	名称	DESCRIPTION
29	N010255	2	内六角沉头 M6X10	SCREW M6x10 A2
30	N080055	2	E 型卡簧 $\phi 6$	TYPE E CIRCLIP $\phi 6$
31	B070082	2	把手定位销	HANDLE DOWEL
32	A250008	1	扒头提升把手支架	HANDLE BRACKET
33	N010264	2	圆头内六角 M6x10 滚花镀黑锌	ROUND HEAD HEXAGON M6x10
34	N080056	1	E 型卡簧 $\phi 5$	TYPE E CIRCLIP $\phi 5$
35	A270005	1	提拉把手	PULL HANDLE
36	B010133	2	尼龙轴套 $\phi 8 \times \phi 6.2 \times 5.5$	NYLON SLEEVE $\phi 8 \times \phi 6.2 \times 5.5$
37	B060286	1	挂线轴	BOBBIN
38	N040001	2	弹垫 $\phi 6$	SPRING WASHER $\phi 6$
39	A170019	1	预埋铁	EMBEDDED IRON
40	N020006	2	自锁螺母-M6-不锈钢	LOCK NUT M6 A2
41	C010105	1	手柄盒-T15B-绿色	HANDLE BAR T15B
42	W020420	1	控制面板组件-大能- T15B	CONTROL PANEL ASSEMBLY- T15B
43	E020066	1	电源开关 T15	POWER SWITCH T15
44	E030041	1	电量显示板 T15	POWER DISPLAY BOARD T15
45	E080241	1	线束 T16B	HARNESS T16B



项目号 ITEM	零件号 P/N	数量 QTY	名称	DESCRIPTION
1	N010257	2	十字槽盘头螺钉 M3x8	SCREW M3x8 A2
2	W020566	1	LED 照明灯组件	FLDDDLIGHT
3	F020099	1	快接水阀 (母头) 1/4"	QUICK WATER VALVE (FEMALE HEAD) 1/4
4	C010222	1	清水箱 T16B	PURGING TANK
5	N090002	1	扎带固定座 23X16	FIXED SEAT 23X16
6	N010086	1	圆头十字-M5X10-不锈钢	SCREW M5x10 A2
7	B020025	1	3/8"堵头	3/8"CAP
8	N090011	1	O 型密封圈 外径 D15x 线径 D3	O-RING
9	F080002	1	排污管	DRAINAGE PIPE
10	C010223	1	污水箱	RECOVERY TANK
11	C030074	1	橡胶密封垫 D33xD26x3.5x10	RUBBER GASKET D33xD26x3.5x10
12	F060024	1	吸风管	SUCTION PIPE
13	C020218	1	吸水口主体	SUCTION BODY
14	C020048	1	清水箱注水口盖子 D76	THREADED COVER Φ76



项目号 ITEM	零件号 P/N	数量 QTY	名称	DESCRIPTION
1	N010182	1	外六角-M6x16-不锈钢	SCREW M6x16 A2
2	N040011	2	弹垫 6 不锈钢	LOCK WASHER M6 A2
3	N030024	2	平垫 6x12x1.6 不锈钢	WASHER 6x12x1.6 A2
4	N010047	2	沉头十字螺钉 M4x12 不锈钢	SCREW M4x12 A2
5	N010229	2	外六角 M5x35 不锈钢	SCREW M5x35 A2
6	N030016	4	平垫 5x10x1 不锈钢	WASHER 5x10x1
7	N010218	3	圆头方颈螺栓 M5X25 不锈钢	SCREW M5x25 A2
8	N010217	2	圆头方颈螺栓 M5X30 不锈钢	SCREW M5x30 A2
9	N010219	2	圆头方颈螺栓 M5X35 不锈钢	SCREW M5x35 A2
10	A010191	1	扒头前固定板 T15	FRONT FIXING PLATE T15
11	D010039	1	扒头主体改右 T15	SQUEEGEE BODY CHANGED RIGHT T15
12	N090073	2	14.6x10 小线扣 T15	14.6x10 SMALL WIRE BUCKLE T15
13	D010037	1	吸污管固定板 T15	SEWAGE PIPE FIXING PLATE T15
14	C030064LTX	1	扒头前胶条 T15	FRONT SQUEEGE BLADE RUBBER LINATEX T15
15	N020037	5	自锁螺母 M5 不锈钢	LOCK NUT M5 A2
16	C020223	3	扒头定向脚轮	GRILLED DIRECTIONAL CASTERS T15
17	D010036	1	扒头主体改-左 T15	SQUEEGEE BODY CHANGED LEFT T15
18	N030061	2	平垫-15x6.5x3-不锈钢	WASHER 15x6.5x3 A2
19	D010035	1	扒头主体 T15	SQUEEGEE BODY T15
20	C030065LTX	1	扒头后胶条 T15	REAR SQUEEGE BLADE RUBBER LINATEX T15
21	A010192	1	扒头后固定板 T15	REAR FIXING PLATE T15
22	N020064	6	花型螺母 M5	NUT M5
23	N010015	2	内六角平端紧定螺钉 M6x40 不锈钢	SCREW M6x40 A2
24	N010246	2	内六角圆柱头 M5X30 不锈钢	SCREW M5x30 A2
25	N030031	2	平垫 5X10X1 镀锌	WASHER 5x10x1 ZINC
26	B060161	1	扒头配重块 T15	GRILLED WEIGHT T15
27	N010106	1	外六角-M6x25-不锈钢	SCREW M6x25 A2



项目号 ITEM	零件号 P/N	数量 QTY	名称	DESCRIPTION
28	B060173	1	单钢丝卡簧-内径 31MM-线径 2MM- 镀彩锌	SINGLE STEEL WIRE CIRCLIP INNER 31MM WIRE 2MM COLOR ZINC PLATING
29	N010245	2	内六角圆柱头 M3X5 发黑	SCREW M3x5 BLACK
30	N020007	2	滚花高螺母 M6	NUT M6
31	F060022	1	吸污管 T15	SUCTION HOSE T15

项目号 ITEM	零件号 P/N	数量 QTY	名称	DESCRIPTION
1	P060258	1	标识标签 T16	FRONT LABEL T16
2	C040293	1	左侧标签 T15	DECAL LEFT T15
3	C040294	1	右侧标签 T15	DECAL RIGHT T15
4	P010004	1	保修卡	WARRANTY CARD
5	P010012	1	测试报告	TEST REPORT
6	P010263	1	中文说明书 T16B	CHINESE MANUAL T16B
7	M010224	1	纸箱-TVX-T16	CARTON BOX T16
8	M010223	1	纸箱上盖-T16	CARTON BOX COVER T16
9	M010014	1	说明书自封袋 340x240mm	PLASTIC PACKAGE BAG 340x240mm
10	M020036	4	木条-40X40X640-T15	BATTEN 40x40x640 T15
11	M020007	12	支撑护角 50x50x100	ANGLE BEAD 50x50x100
12	HC10005	50	P 钉	P NAIL
13	HC10017	8	封箱钉 35mmx18mm	SEALING BOX NAIL 35mmx18mm
14	M010015	1	塑料包装袋 1400x700x1000	PLASTIC PACKAGE BAG 1400x700x1000
15	M020082	1	木托盘-T16	WOOD PALLET T16
16	M020008	4	三角挡块 50x50x100	TRIANGLE BLOCK 50x50x100
17	M020024	2	三角挡块 50x50x70	TRIANGLE BLOCK 50x50x70
18	N010159	4	沉头十字自攻螺丝-ST4x25-发黑	SELF TAPPING SCREW ST4x25 BLACK
19	N010160	10	沉头十字自攻螺丝-ST4x40-发黑	SELF TAPPING SCREW ST4x40 BLACK
20	N030022	4	平垫-6x18x1.6-不锈钢	WASHER 6x18x1.6 A2
21	N100056	1	内六角扳手 4MM	HEXAGONAL WRENCH 4MM
22	M010098	1	刷盘防护膜 T15	BRUSH GUARD FOAM
23	M010100	1	真空棉-410X245X20-T15	VACUUM COTTON 410X245X20 T15
24	C040306	1	转运警示标贴英文 T15	TRANSIT WARNING LABEL ENGLISH T15
25	N090044	1	电线绑带 T45E	CABLE TIE T45E
26	N090031	1	钥匙挂件	KEY PENDANT

选配件

项目号 ITEM	零件号 P/N	数量 QTY	名称	DESCRIPTION
6	N150002	1	刷盘 T-13 英寸-PP0.6	SCRUBBING -13" - PP0.6
7	N150058	1	针盘 T 13 英寸	PAD HOLDER-13"
8	N150007	1	刷盘 T-13 英寸-PP0.28	SCRUBBING -13" - PP0.28
9	N150058	1	锁水刷盘 T 13 寸	WATER LOCKING BRUSH TRAY-13"