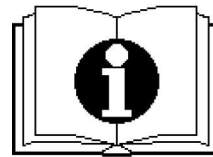




— **SCHEMATIC DRAWINGS** —

装配示意图



驾驶式洗地机 T150 / 85R/100R

Scrubber Dryer T150 / 85R/100R

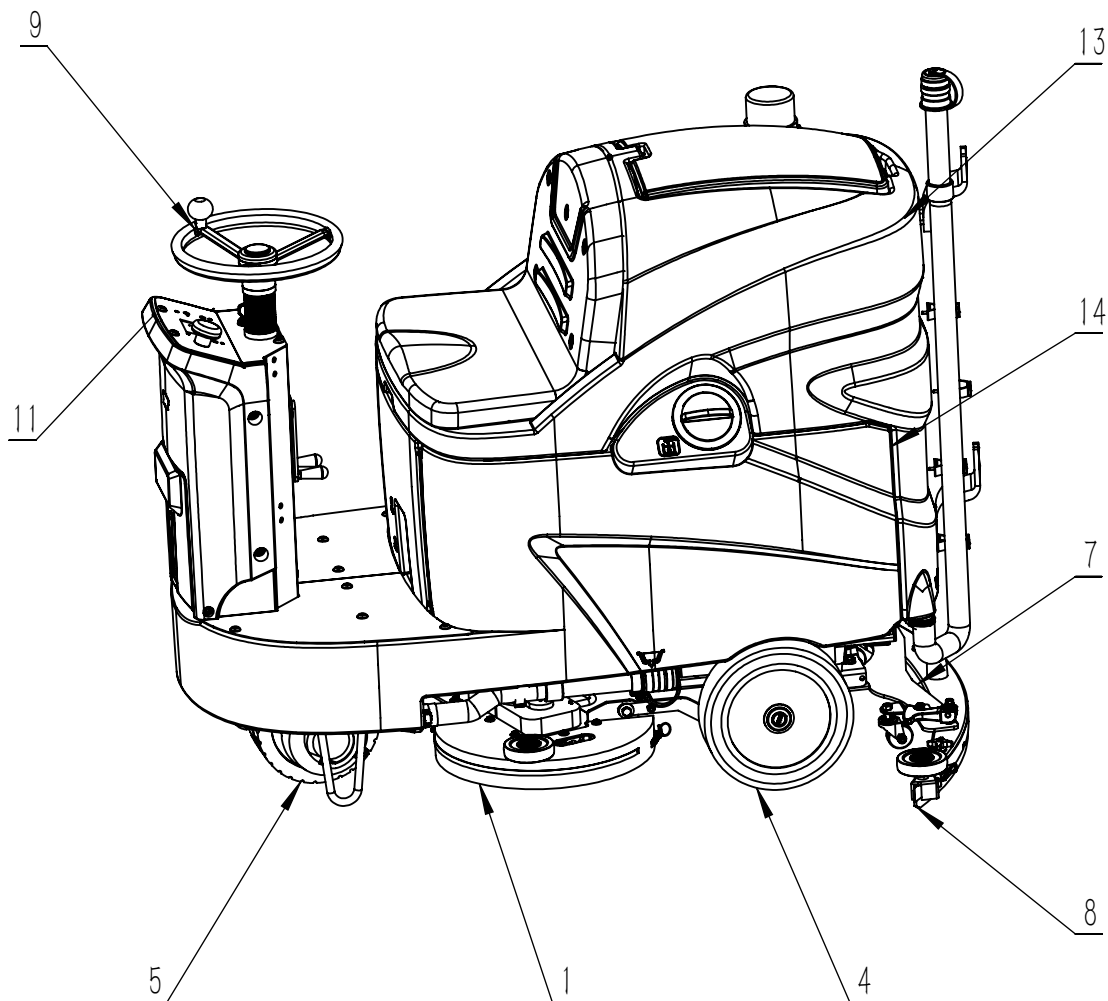
Issued in Aug. 2023

Version : V02

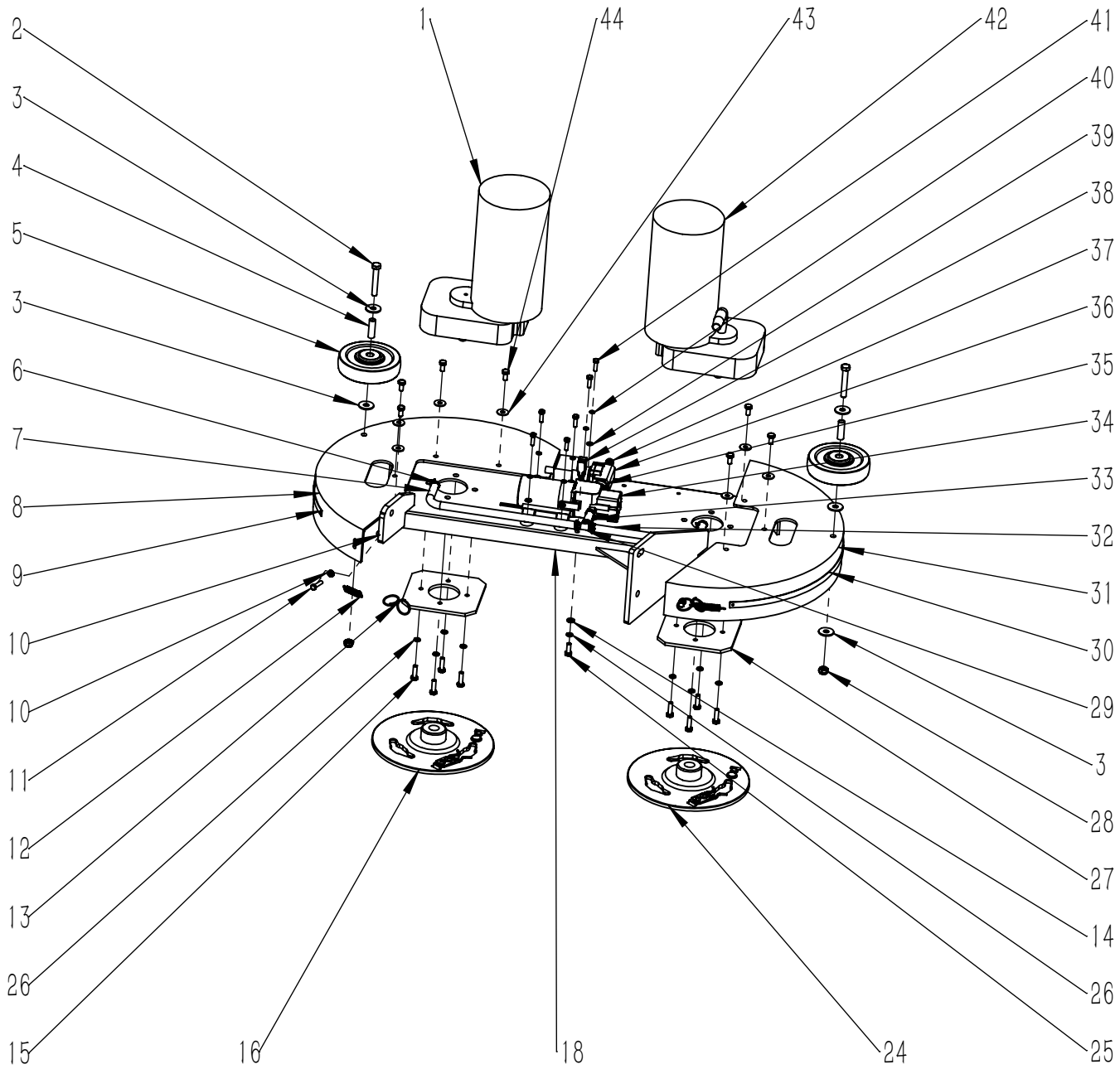


目 录

1. 机头组件 T150/85R	1—4
2. 机头组件 T150/100R	5—8
3. 机头外罩 85R/100R	9—10
4. 底座架组件	11—16
5. 驱动组件	17—20
6. 水路组件	21—22
7. 扒头支架组件	23—24
8. 扒头组件	25—26
9. 转向组件	27—28
10. 提升支架组件	29—30
11. 控制面板组件	31—32
12. 电器组件	33—34
13. 污水箱组件	35—40
14. 清水箱组件	41—44
15. 附件	45—46



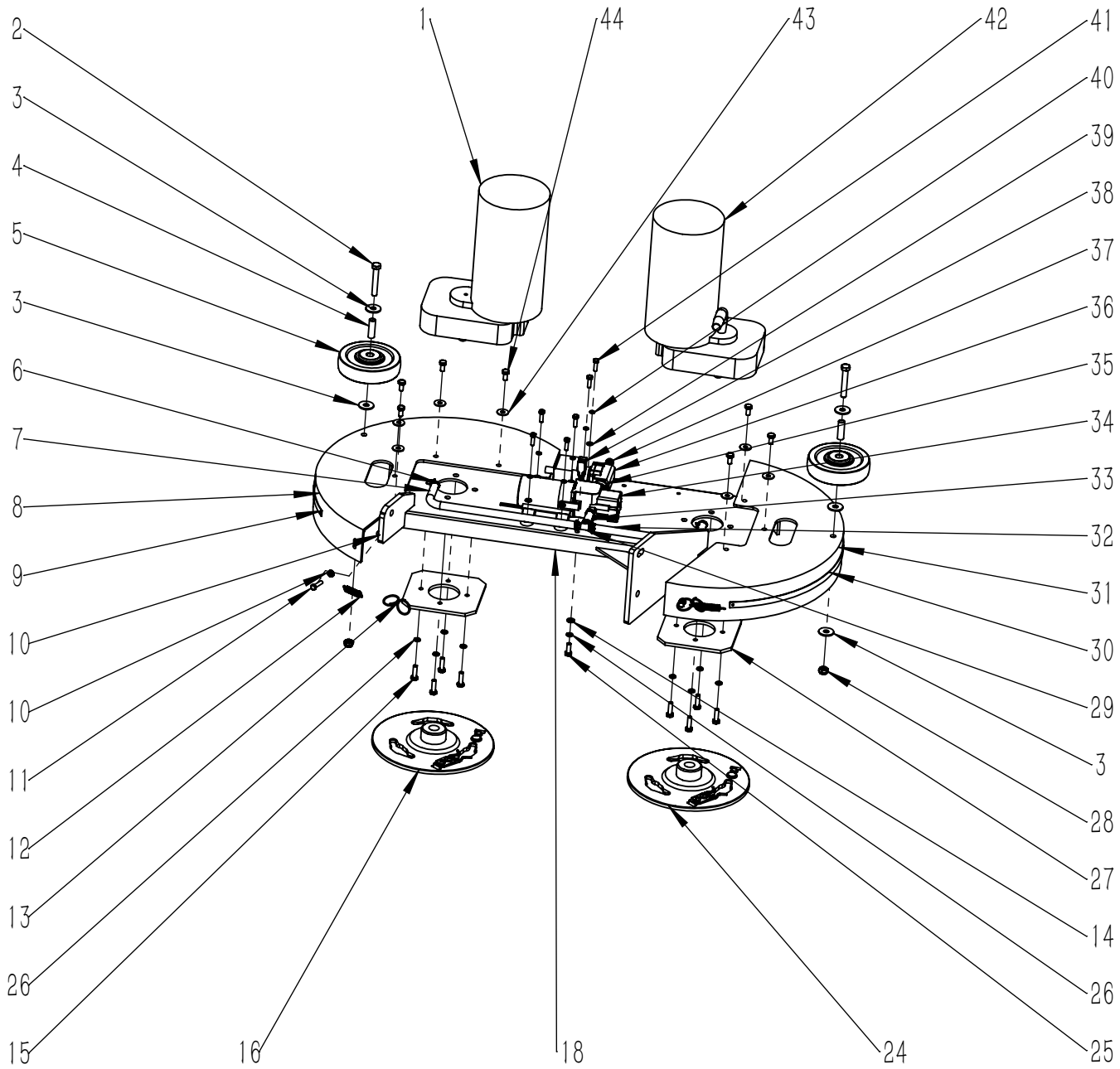
T150/85R



T150 85R

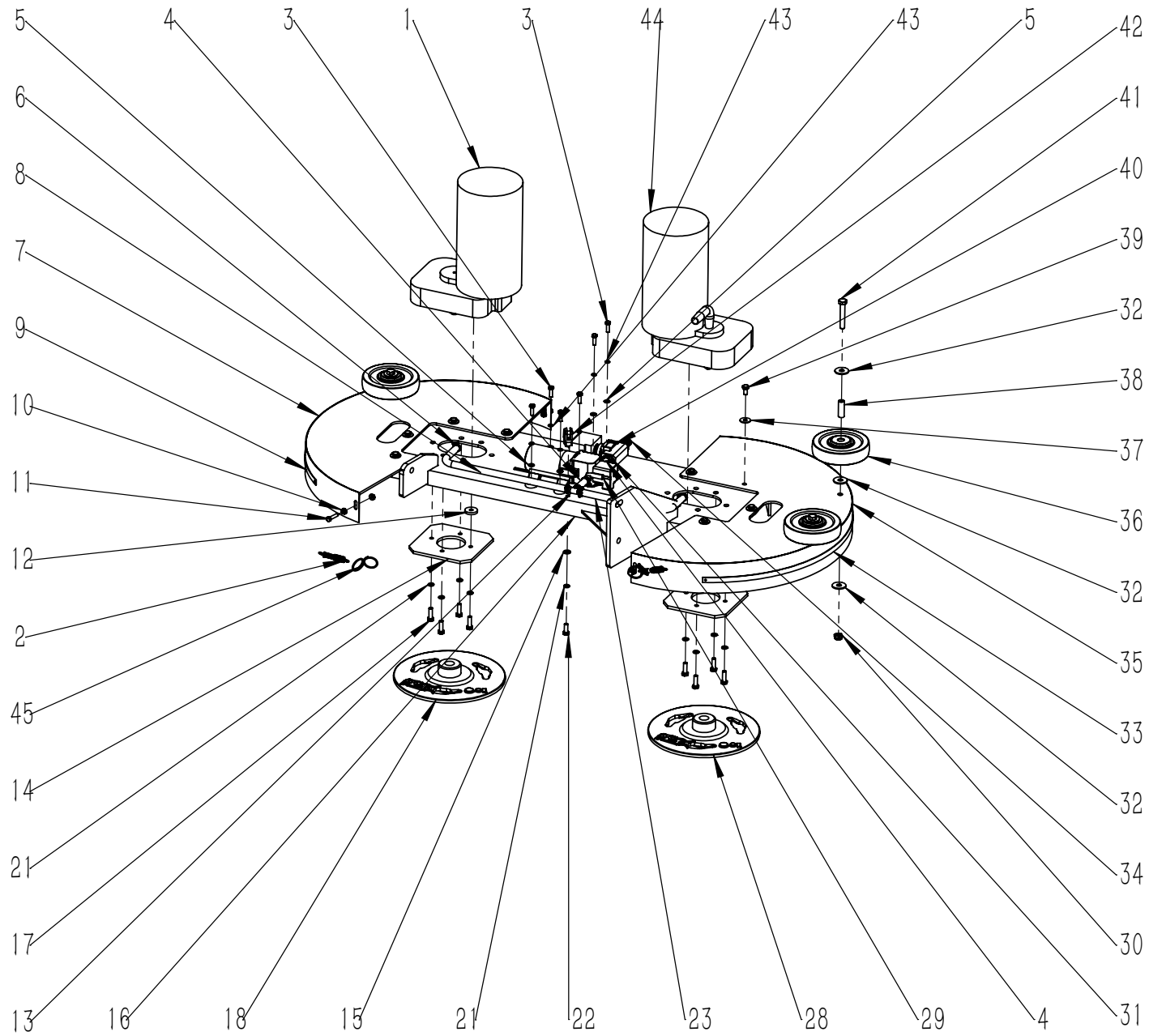
项目号 ITEM	零件号 P/N	数量 QTY	名称	DESCRIPTION
1	W020285	1	左刷盘电机组件-36V-450W-200RPM	LEFT BRUSH MOTOR ASSEMBLY 36V 450W 200RPM
2	N010144	2	外六角-M8x50-不锈钢	SCREW M8x50 A2
3	N030028	6	平垫-8x24x2-不锈钢	WASHER 8x24x2 A2
4	B020027	2	防撞轮铜套 8x10x31	BUSHING 8x10x31
5	N110019	2	防撞轮 D100x29.5	WHEEL Φ100x29.5
6	F050003	8	卡箍 D10-16	SCREW CLAMP D10-16
7	F050088.6	1	硅胶水管 D=12 d=8 L=310	SILICONE HOSE D=12 d=8 L=310
8	C020025	1	机头左护罩 205	BASE COVER LEFT 205
9	A040050	1	防溅条紧固钢条 10x606	BLADE 10x606
10	N020049	8	法兰面螺母-M5-不锈钢	NUT M5 A2
11	N010135	4	外六角-M5x20-不锈钢	SCREW M5x20 A2
12	B060012	2	钢条拉簧 1.1x10x55	SPRING 1.1x10x55
13	B070010	2	异型套圈 2x26	RING 2x26
14	N030007	1	平垫-6x12x1.6-镀锌	WASHER 6x12x1.6 ZINC
15	N010006	8	外六角-M6x20-镀锌	SCREW M6x20 ZINC
16	W020078	1	刷盘锁紧器组件-右	LOCKER ASSEMBLY-RIGHT
18	A040025	1	电机座-T150-85R	SPECIAL MOTOR BASE
24	W020077	1	刷盘锁紧器组件-左	LOCKER ASSEMBLY-LEFT
25	N010005	1	外六角-M6x16-镀锌	SCREW M6x16 ZINC
26	N040001	9	弹垫-M6-镀锌	LOCK WASHER M6 ZINC
27	A040026	2	电机固定板 120x120	PLAQUE 120x120
28	N020024	2	自锁螺母-M8-不锈钢	LOCK NUT M8 A2
29	F020012	1	三通宝塔接头-D=10-d=8	CONNECTOR D=10 d=8
30	A040049	1	防溅条紧固钢条 10x553	BLADE 10x553

T150/85R



T150/85R

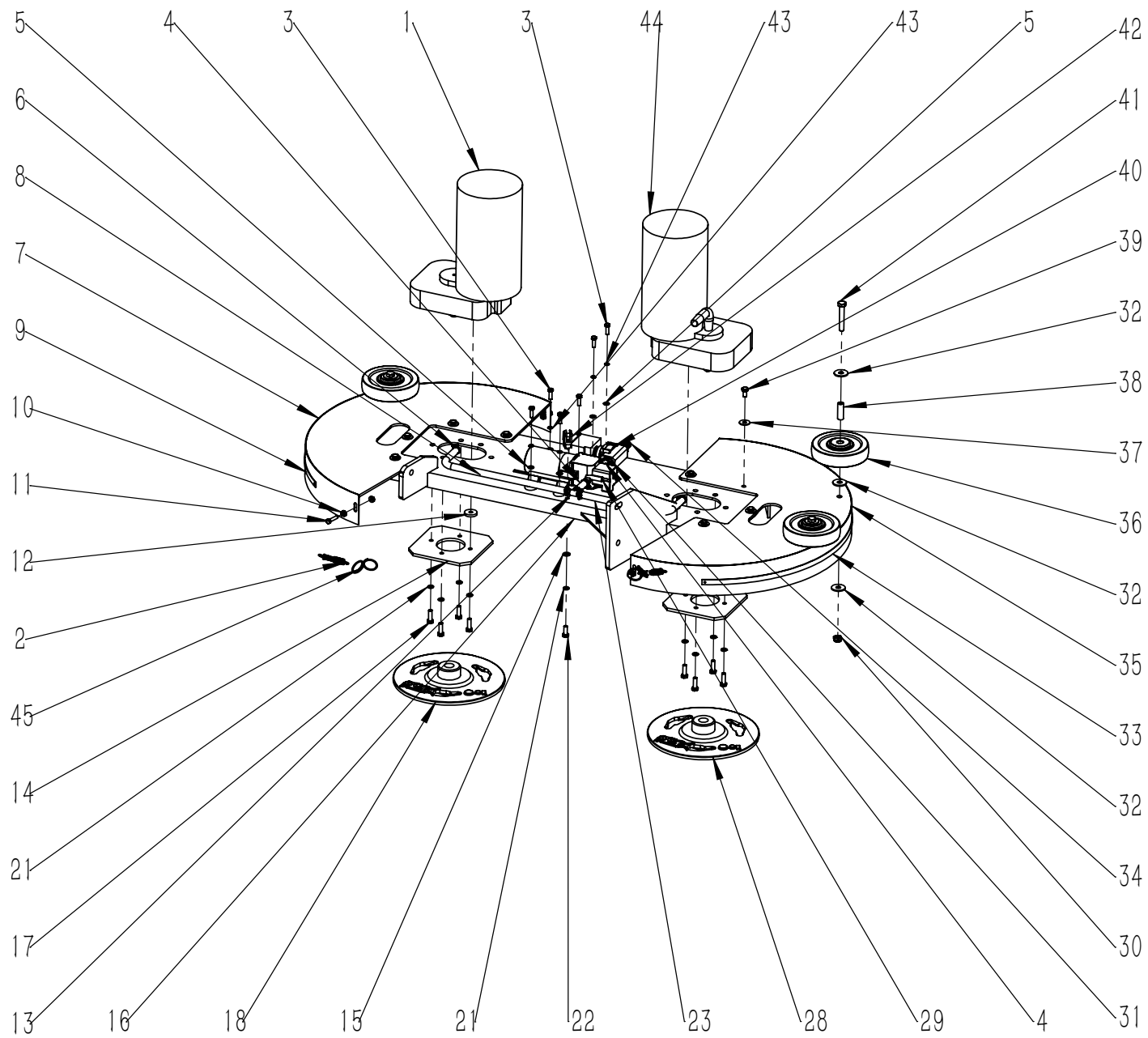
项目号 ITEM	零件号 P/N	数量 QTY	名称	DESCRIPTION
31	C020026	1	机头右护罩 205	BASE COVER RIGHT 205
32	F050088.7	1	硅胶水管 D=12 d=8 L=240	SILICONE HOSE D=12 d=8 L=240
33	F050088.8	2	硅胶水管 D=12 d=8 L=50	SILICONE HOSE D=12 d=8 L=50
34	W020272	1	微型水泵组件 24V	MICRO WATER PUMP ASSEMBLY 24V
35	F020016	1	快速接头-1/2-D=10-d=8	CONNECTOR 1/2 D=10 d=8
36	W020256	1	电磁阀组件-T55-70BT	SOLENOID VALVE ASSEMBLY T55/70BT
37	F020002	1	快速接头 1/2	CONNECTOR 1/2
38	N060006	1	夹片式-Y型接头-Y-16	Y-CONNECTOR Y-16
39	N030016	6	平垫-5x10x1-不锈钢	WASHER 5x10x1
40	N040023	6	弹垫-M5-不锈钢	LOCK WASHER M5
41	N010029	6	外六角-M5x16-不锈钢	SCREW M5x16 A2
42	W020286	1	右刷盘电机组件-36V-450W-200RPM	RIGHT BRUSH MOTOR ASSEMBLY 36V 450W 200RPM
43	N030022	7	平垫-6x18x1.6-不锈钢	WASHER 6x18x1.6 A2
44	N010145	7	外六角-M6x12-不锈钢	SCREW M6x12 A2



T150/100R

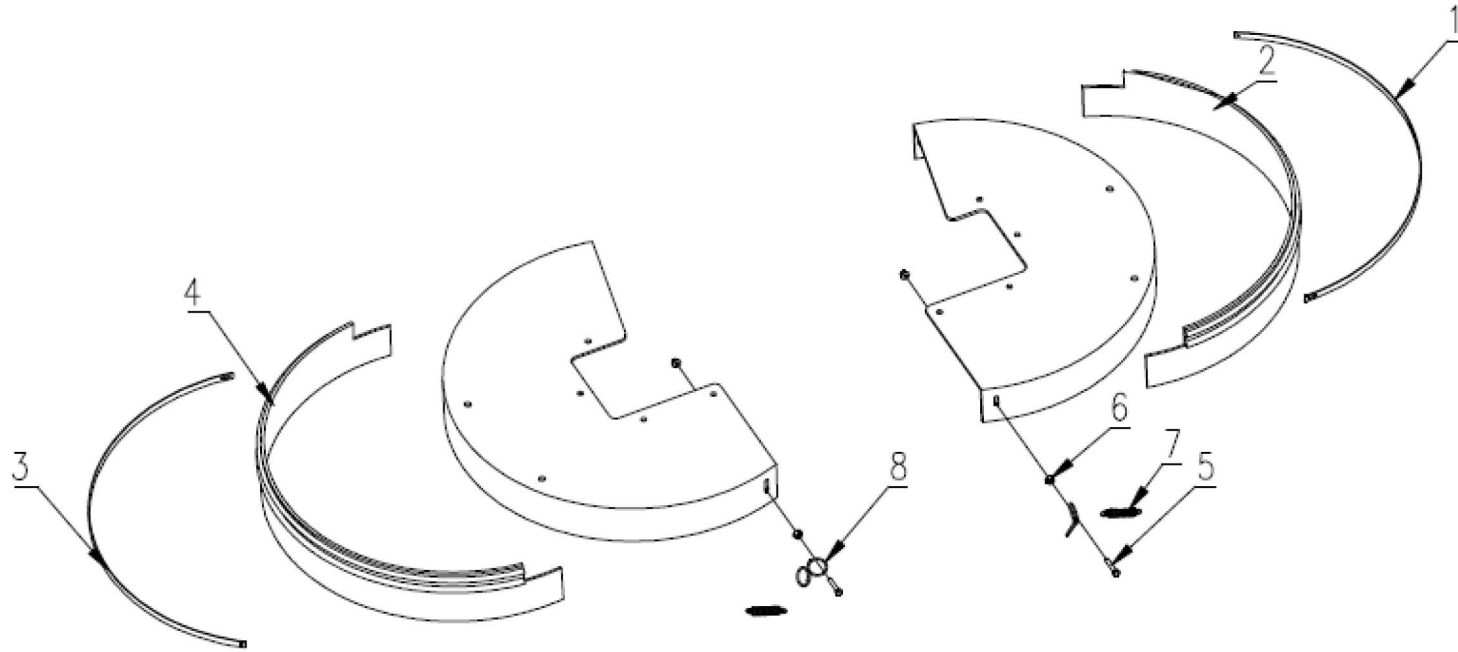
项目号 ITEM	零件号 P/N	数量 QTY	名称	DESCRIPTION
1	W020285	1	左刷盘电机组件-36V-450W-200RPM	LEFT BRUSH MOTOR ASSEMBLY 36V 450W 200RPM
2	B060012	2	钢条拉簧 1.1x10x55	SPRING 1.1x10x55
3	N010029	6	外六角-M5x16-不锈钢	SCREW M5x16 A2
4	F050088.8	2	硅胶水管 D=12 d=8 L=50	SILICONE HOSE D=12 d=8 L=50
5	N030016	6	平垫-5x10x1-不锈钢	WASHER 5x10x1
6	F050003	8	卡箍 D10-16	SCREW CLAMP D10-16
7	A040048	1	机头右护罩 D500	HEAD COVER RIGHT Φ500
8	F050088.6	1	硅胶水管 D=12 d=8 L=310	SILICONE HOSE D=12 d=8 L=310
9	A040053	1	防溅条紧固钢条 10x690	BLADE 10x690
10	N020049	8	法兰面螺母-M5-不锈钢	NUT M5 A2
11	N010135	4	外六角-M5x20-不锈钢	SCREW M5x20 A2
12	B060052	2	垫片 6.5x22x4	WASHER 6.5x22x4
13	F020012	1	三通宝塔接头-D=10-d=8	CONNECTOR D=10 d=8
14	A040026	2	电机固定板 120x120	PLAQUE 120x120
15	N030007	1	平垫-6x12x1.6-镀锌	WASHER 6x12x1.6 ZINC
16	A040051	1	电机座	MOTOR BASE
17	N010006	8	外六角-M6x20-镀锌	SCREW M6x20 ZINC
18	W020078	1	刷盘锁紧器组件-右	LOCKER ASSEMBLY-RIGHT
21	N040001	9	弹垫-M6-镀锌	LOCK WASHER M6 ZINC
22	N010005	1	外六角-M6x16-镀锌	SCREW M6x16 ZINC
23	F050088.7	1	硅胶水管 D=12 d=8 L=240	SILICONE HOSE D=12 d=8 L=240
28	W020077	1	刷盘锁紧器组件-左	LOCKER ASSEMBLY-LEFT
29	W020272	1	微型水泵组件 24V	MICRO WATER PUMP ASSEMBLY 24V
30	N020024	3	自锁螺母-M8-不锈钢	LOCK NUT M8 A2

T150/100R



T150/100R

项目号 ITEM	零件号 P/N	数量 QTY	名称	DESCRIPTION
31	F020016	1	快速接头-1/2-D=10-d=8	CONNECTOR 1/2 D=10 d=8
32	N030028	9	平垫-8x24x2-不锈钢	WASHER 8x24x2 A2
33	A040052	1	防溅条紧固钢条 10x780	BLADE 10x780
34	F020002	1	快速接头 1/2	CONNECTOR 1/2
35	A040047	1	机头左护罩 D500	HEAD COVER LEFT Φ500
36	N110019	3	防撞轮 D100x29.5	WHEEL Φ100x29.5
37	N030022	8	平垫-6x18x1.6-不锈钢	WASHER 6x18x1.6 A2
38	B020027	3	防撞轮铜套 8x10x31	BUSHING 8x10x31
39	N010145	8	外六角-M6x12-不锈钢	SCREW M6x12 A2
40	W020256	1	电磁阀组件-T55-70BT	SOLENOID VALVE ASSEMBLY T55/70BT
41	N010144	3	外六角-M8x50-不锈钢	SCREW M8x50 A2
42	N060006	1	夹片式-Y型接头-Y-16	Y-CONNECTOR Y-16
43	N040023	6	弹垫-M5-不锈钢	LOCK WASHER M5
44	W020286	1	右刷盘电机组件-36V-450W-200RPM	RIGHT BRUSH MOTOR ASSEMBLY 36V 450W 200RPM
45	B070010	2	异型套圈 2x26	RING 2x26

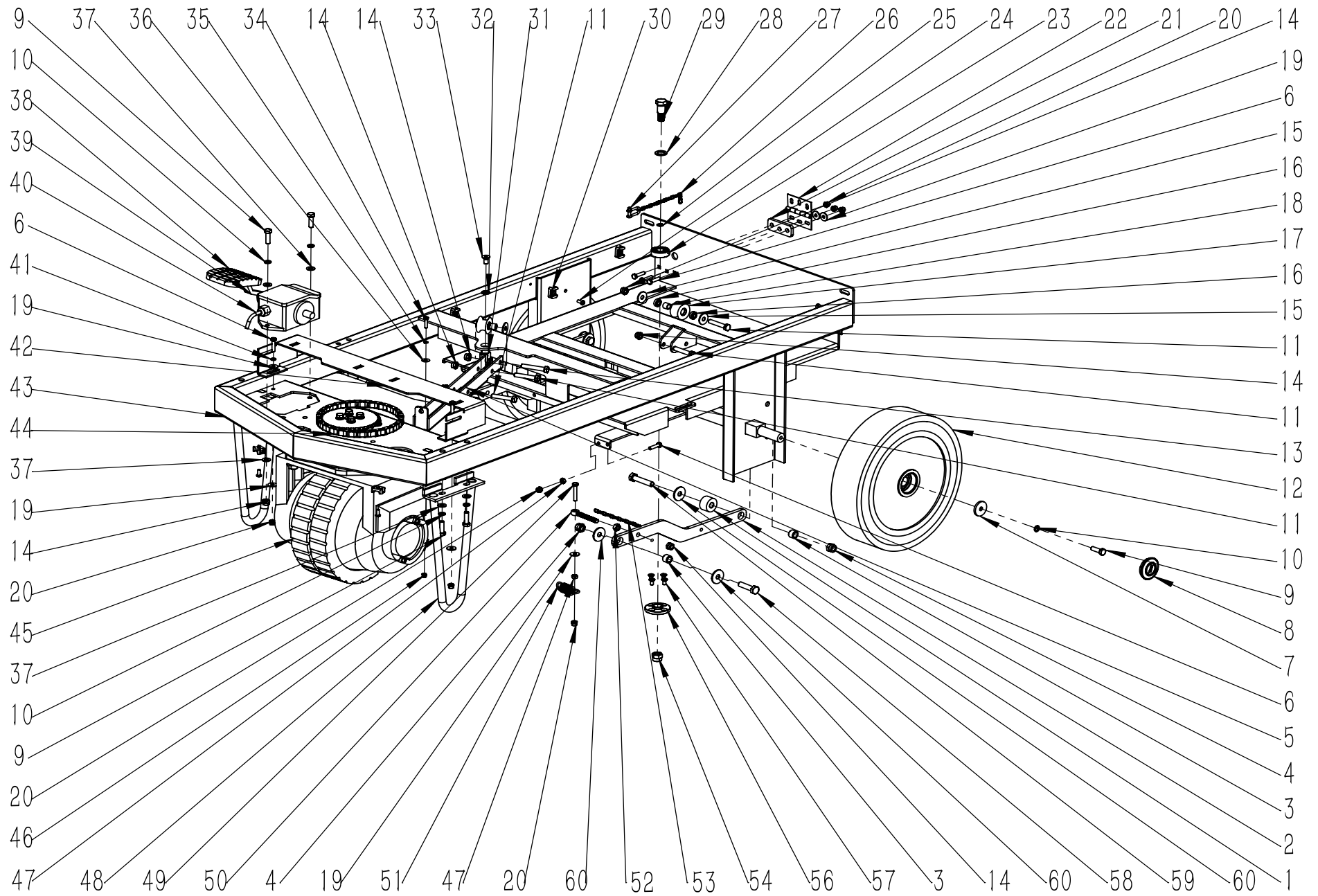


85R

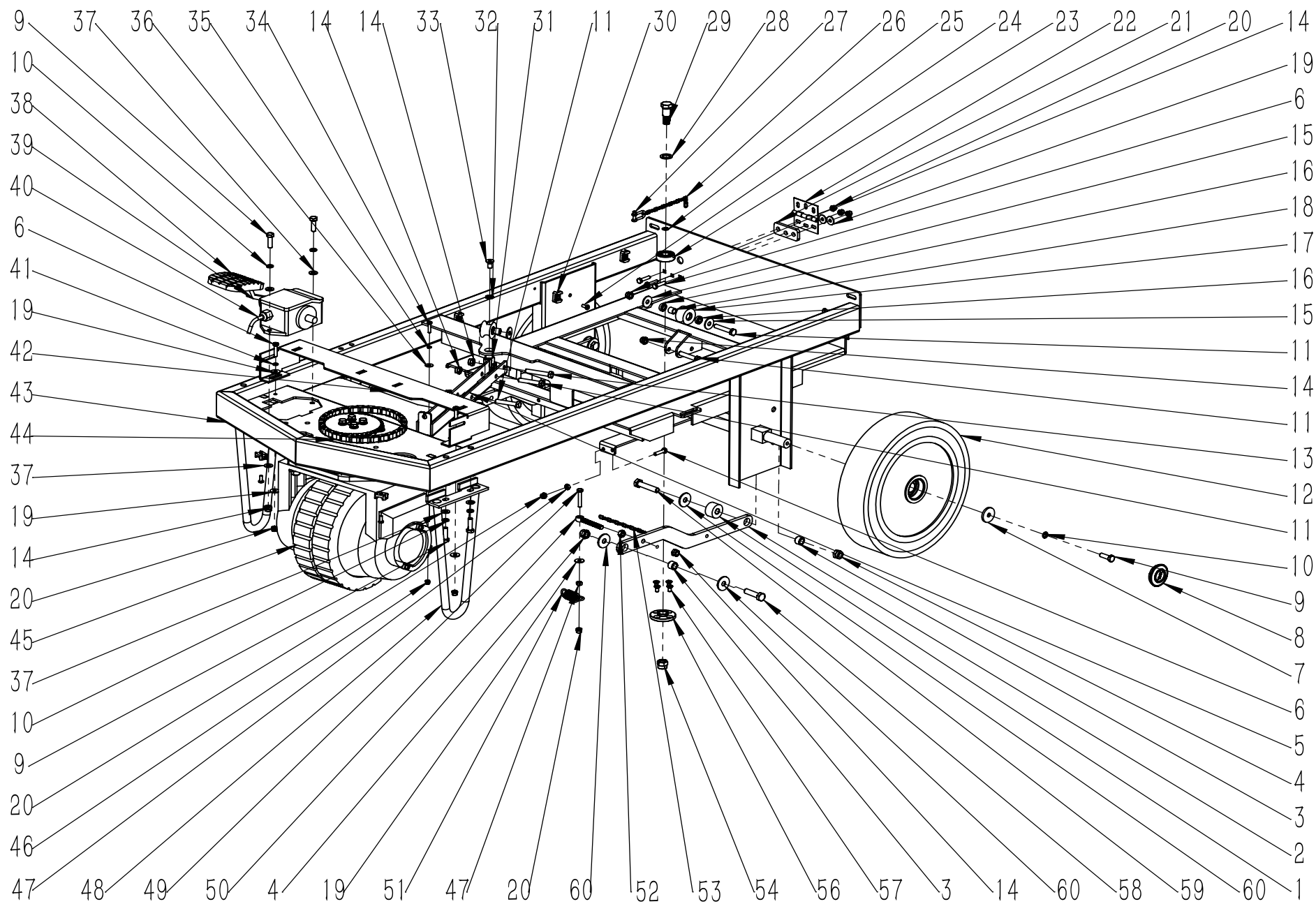
项目号 ITEM	零件号 P/N	数量 QTY	名称	DESCRIPTION
1	A040050	1	防溅条紧固钢条 10x606	BLADE 10x606
2	C030025	1	刷盘防溅条-橡胶-85x820	RUBBER SKIRT 85x820
3	A040049	1	防溅条紧固钢条 10x553	BLADE 10x553
4	C030024	1	刷盘防溅条-橡胶-85x750	RUBBER SKIRT 85x750
5	N010135	4	外六角-M5x20-不锈钢	SCREW M5x20 A2
6	N020049	8	法兰面螺母-M5-不锈钢	NUT M5 A2
7	B060012	2	钢条拉簧 1.1x10x55	SPRING 1.1x10x55
8	B070010	2	异型套圈 2x26	RING 2x26

100R

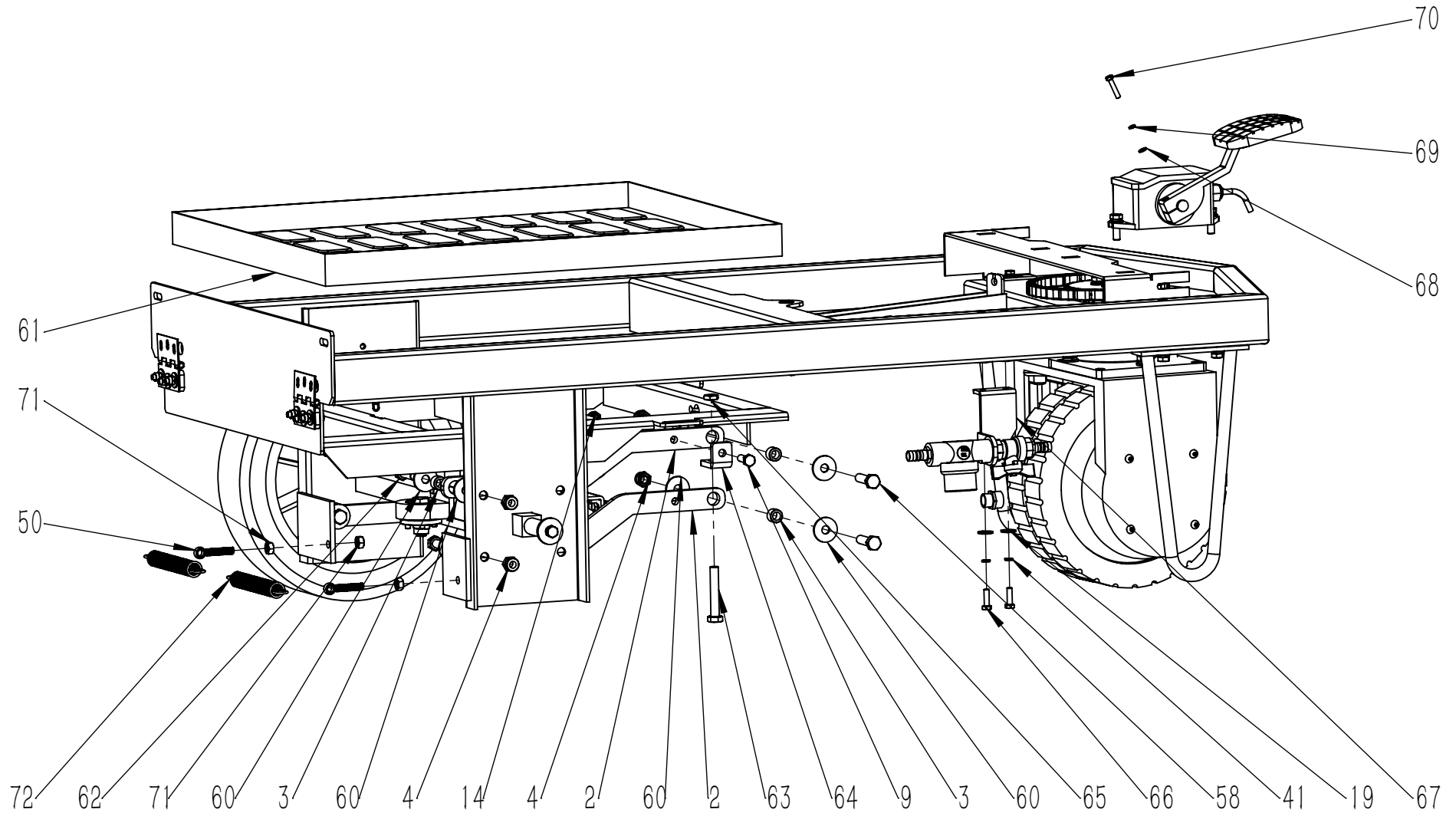
项目号 ITEM	零件号 P/N	数量 QTY	名称	DESCRIPTION
1	A040053	1	防溅条紧固钢条 10x690	BLADE 10x690
2	C030031	1	刷盘防溅条-橡胶-85x770	RUBBER SKIRT 85x770
3	A040052	1	防溅条紧固钢条 10x780	BLADE 10x780
4	C030030	1	刷盘防溅条-橡胶-85x860	RUBBER SKIRT 85x860
5	N010135	4	外六角-M5x20-不锈钢	SCREW M5x20 A2
6	N020049	8	法兰面螺母-M5-不锈钢	NUT M5 A2
7	B060012	2	钢条拉簧 1.1x10x55	SPRING 1.1x10x55
8	B070010	2	异型套圈 2x26	RING 2x26



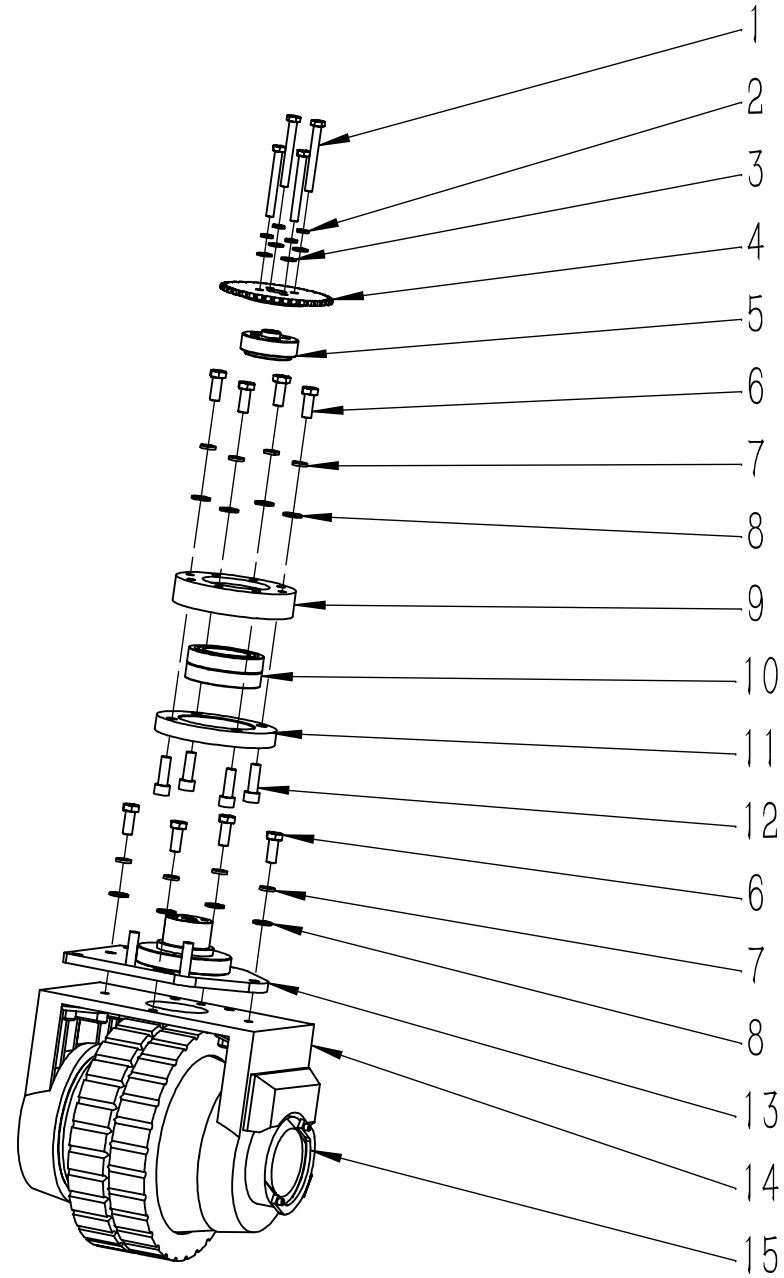
项目号 ITEM	零件号 P/N	数量 QTY	名称	DESCRIPTION
1	B060053	1	垫圈 10.5x30x18.5	WASHER 10.5x30x18.5
2	A040023	3	拉臂 366	ARM 366
3	B020016	6	铜套 10x16x11.5	BUSHING 10x16x11.5
4	N020002	6	自锁螺母-M10-镀锌	LOCK NUT M10 ZINC
5	A050029	1	拉链支撑导轨 375x34	GUIDE RAIL 375x34
6	N010020	9	外六角-M6x25-镀锌	SCREW M6x25 ZINC
7	B060069	2	平垫-8.5x30x4-镀锌	WASHER 8.5x30x4 ZINC
8	C020458	2	脚轮盖 D52-YL	COVER Φ52-YL
9	N010007	9	外六角-M8x25-镀锌	SCREW M8x25 ZINC
10	N040013	8	弹垫-M8-镀锌	LOCK WASHER M8 ZINC
11	N010003	4	外六角-M8x45-镀锌	SCREW M8x45 ZINC
12	C020030A	2	轮子 D300x70-YL	WHEEL Φ300x70
13	N010010	1	外六角-M8x50-镀锌	SCREW M8x50 ZINC
14	N020001	9	自锁螺母-M8-镀锌	LOCK NUT M8 ZINC
15	N030027	4	平垫-8x24x2-镀锌	WASHER 8x24x2 ZINC
16	N070003	4	小轴承 688ZZ	BEARING 688 ZZ
17	B050010	2	滑轮 D35x20	ROLLER Φ35x20
18	B020019	2	铜套 8x12x11	BUSHING 8x12x11
19	N030008	13	平垫-6x18x1.6-镀锌	WASHER 6x18x1.6 ZINC
20	N020012	10	自锁螺母-M6-镀锌	LOCK NUT M6 ZINC
21	A030014	2	折页固定板 64x25	PLAQUE 64x25
22	N080004	2	折页 64x64	HINGE 64x64
23	N070019	1	轴承-6202ZZ-不锈钢	BEARING 6202ZZ
24	N010112	5	圆头十字-M5x16-不锈钢	SCREW M5x16 A2
25	N080019	1	卡簧 D35	CIRCLIP Φ35
26	N100016	1	链条 255	CHAIN 255
27	N060009	1	U型销 M5	SPLIT PIN M5
28	B050056	1	垫片 D15xD23x2	WASHER Φ15xΦ23x2
29	B060120	1	扒头支架轴肩螺栓	SUPPORT SHOULDER BOLT
30	N090002	5	扎带固定座 23x16	SUPPORT 23x16



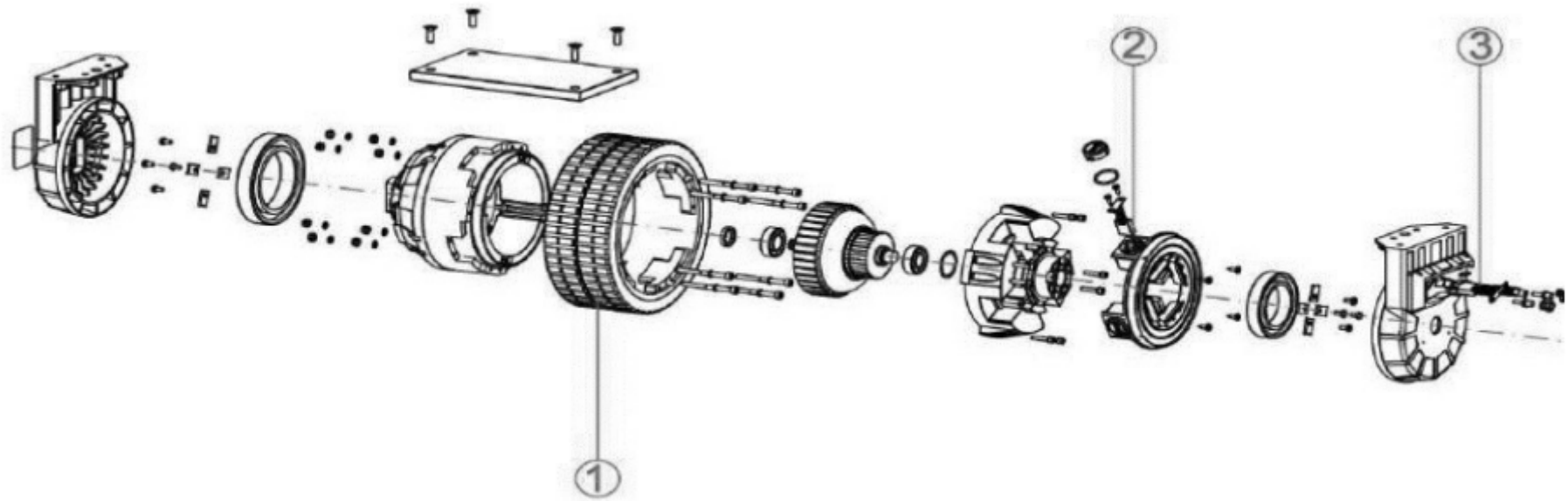
项目号 ITEM	零件号 P/N	数量 QTY	名称	DESCRIPTION
31	N060003	1	螺纹支架 M8x18	FORK M8x18
32	N040012	1	锁紧垫片-M8x13-镀锌	LOCK WASHER M8x13 ZINC
33	N010001	1	沉头内六角 M8x16 镀锌	SCREW M8x16 ZINC
34	N010062	1	外六角-M5x20-镀锌	SCREW M5x20 ZINC
35	N040007	1	弹垫-M5-镀锌	LOCK WASHER M5 ZINC
36	N030013	1	平垫-5x15x1.2-镀锌	WASHER 5x15x1.2 ZINC
37	N030006	8	平垫-8x16x1.6-镀锌	WASHER 8x16x1.6 ZINC
38	C030006	1	脚踏垫 98x80	RUBBER PAD 98x80
39	A050059	1	脚踏 T150	PEDAL T150
40	E020005A	1	霍尔电子油门踏板	HALL ACCELERATOR
41	N040001	4	弹垫-M6-镀锌	LOCK WASHER M6 ZINC
42	A020013	1	加宽脚踏板支架 518x60	SUPPORT 518x60
43	A030066	1	底座架 1258×580	FRAME 1258x580
44	N100018	1	链条 06B-23/45	CHAIN 06B-23/45
45	W010040	1	驱动部件组件 T150	DRIVE PART ASSEMBLY T150
46	N020016	1	自锁螺母-M5-镀锌	LOCK NUT M5 ZINC
47	N020022	2	螺母-M6-镀锌	NUT M6 ZINC
48	A030015	2	防撞架 285x136	SUPPORT 285x136
49	N010078	1	外六角-M6x35-镀锌	SCREW M6x35 ZINC
50	N100006	3	吊环活节螺栓 M8x35	SWING BOLT M8x35
51	B070003	1	拉簧 2.8x20x93	SPRING 2.8x20x93
52	N020018	1	螺母-M8-镀锌	NUT M8 ZINC
53	N100015	1	链条 263	CHAIN 263
54	N020003	1	自锁螺母-M12x1.75-镀锌	LOCK NUT M12x1.75 ZINC
55	A050061	1	扒头支架连接板	SUPPORT CONNECTING PLATE
56	B050057	1	轴承座法兰	BEARING SUPPORT FLANGE
57	N010154	4	沉头内六角-M6x12-不锈钢	SCREW M6x12 A2
58	N010026	3	外六角-M10x40-镀锌	SCREW M10x40 ZINC
59	N010083	1	外六角-M10x50-镀锌	SCREW M10x50 ZINC
60	N030041	12	平垫-10x30x2.5-镀锌	WASHER 10x30x2.5 ZINC



项目号 ITEM	零件号 P/N	数量 QTY	名称	DESCRIPTION
61	C020024	1	电池座 595x492	BATTERY BASE 595x492
62	N010081	2	外六角-M10x35-镀锌	SCREW M10x35 ZINC
63	N010089	1	外六角-M10x60-不锈钢-全牙	SCREW M10x60 A2 WHOLE TOOTH
64	A040022	1	调节支架 36x31	SUPPORT 36x31
65	N020033	1	薄螺母-M10-不锈钢	NUT M10 A2
66	N010006	2	外六角-M6x20-镀锌	SCREW M6x20 ZINC
67	A020007	1	过滤器支架 65x35	SUPPORT 65x35
68	N030031	1	平垫-5x10x1-镀锌	WASHER 5x10x1 ZINC
69	N040007	1	弹垫-M5-镀锌	LOCK WASHER M5 ZINC
70	N010009	1	外六角-M5x25-镀锌	SCREW M5x25 ZINC
71	N020054	4	螺母-M8-镀黑锌	NUT M8 BLACK ZINC
72	B070054	2	拉簧	SPRING

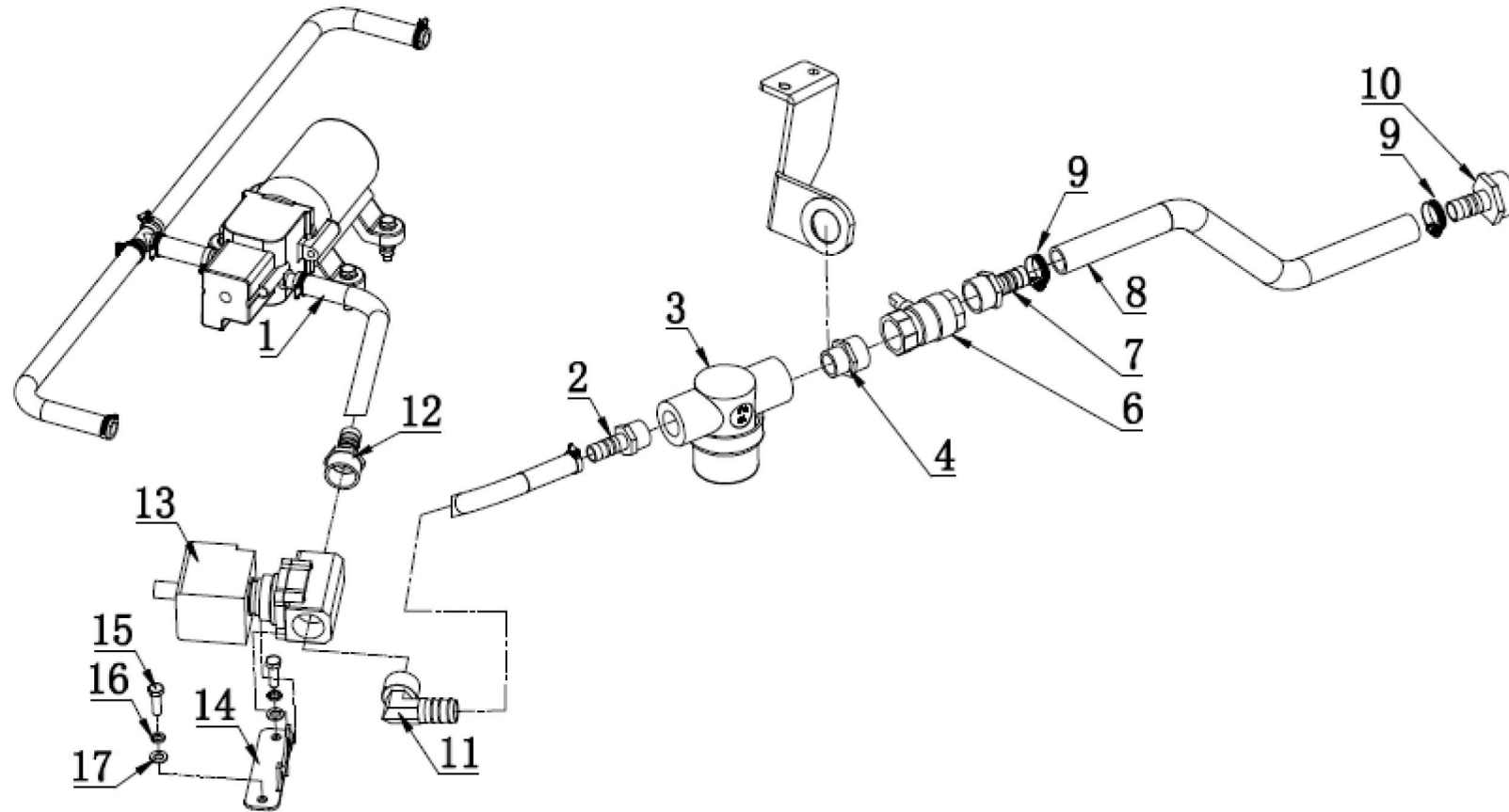


项目号 ITEM	零件号 P/N	数量 QTY	名称	DESCRIPTION
1	N010056	4	外六角-M8x70-镀锌-全牙	SCREW M8x70 ZINC
2	N040013	4	弹垫-M8-镀锌	LOCK WASHER M8 ZINC
3	N030006	4	平垫-8x16x1.6-镀锌	WASHER 8x16x1.6 ZINC
4	B060057	1	转向大齿轮 D120	PINION Φ 120
5	B060058	1	定位垫圈 20x60x27	WASHER 20x60x27
6	N010060	8	外六角-M10x25-镀锌	SCREW M10x25 ZINC
7	N040003	8	弹垫-M10-镀锌	LOCK WASHER M10 ZINC
8	N030004	8	平垫-10x20x2-镀锌	WASHER 10x20x2 ZINC
9	B060051	1	轴承座(上) D128	BEARING SUPPORT UP Φ 128
10	N070006	2	轴承 6010	BEARING 6010
11	B060050	1	轴承座(下) D128	BEARING SUPPORT DOWN Φ 128
12	N010063	4	内六角圆柱头-M10x30-镀锌	SCREW M10x30 ZINC
13	B060067	1	电机定位轴 Amer	Amer MOTOR POSITIONING SHAFT
14	W020287	1	驱动电机组件 Amer	DRIVE MOTOR AMER ASSEMBLY
15	W020365	1	电子刹车组件 Amer	AMER ELECTRONIC BRAKE ASSEMBLY

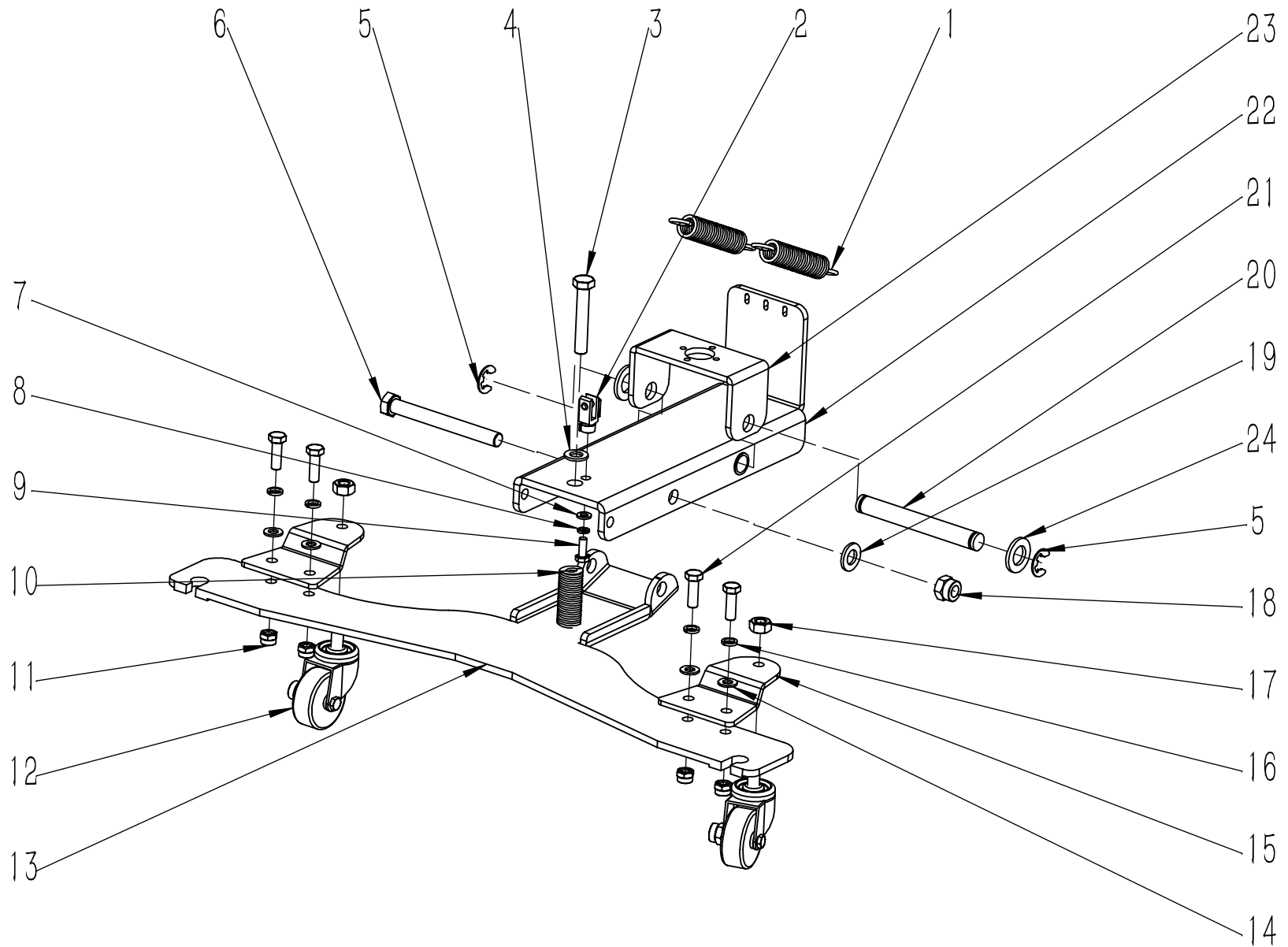




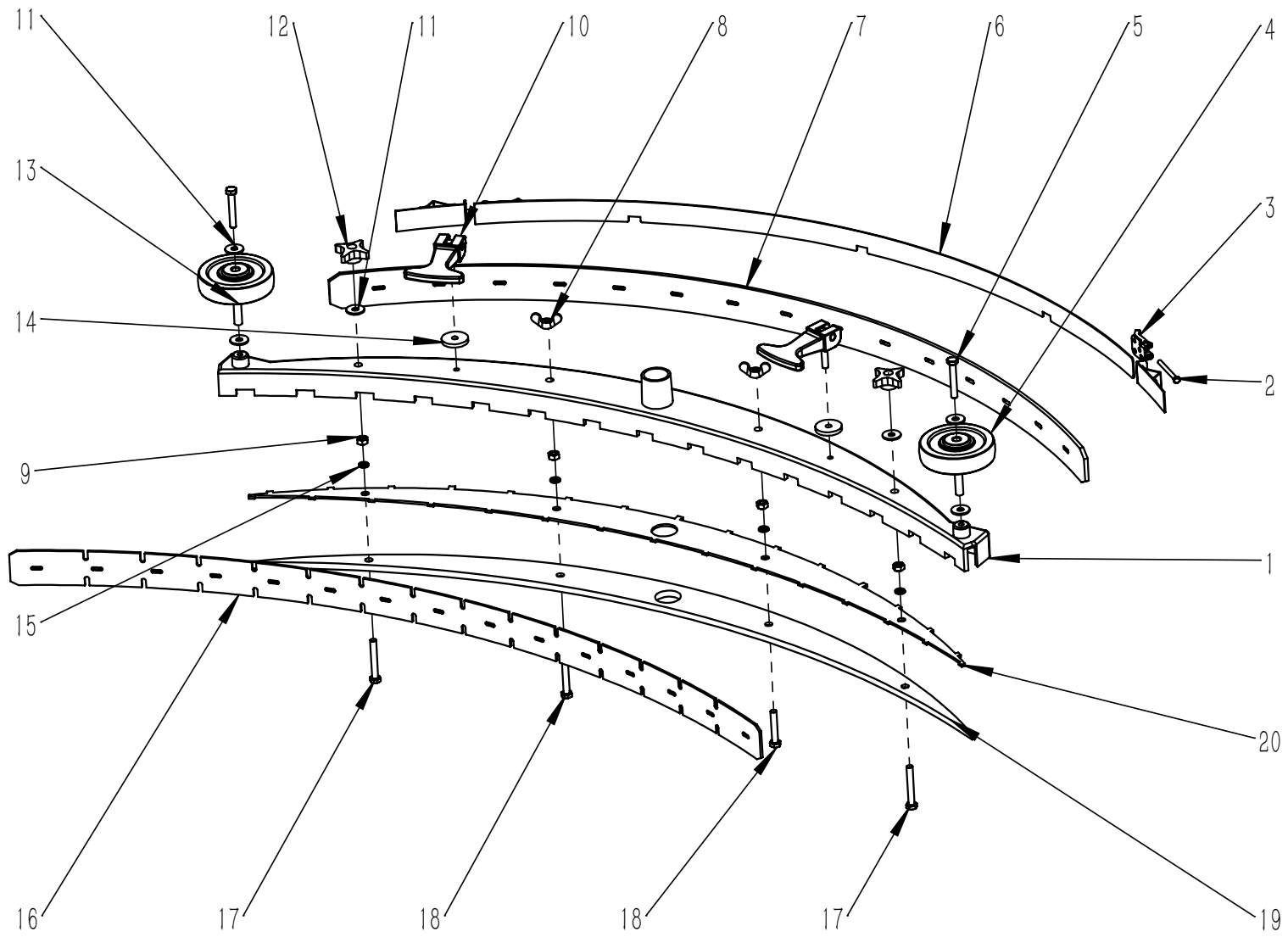
项目号 ITEM	零件号 P/N	名称	数量 QTY	DESCRIPTION
1	N110078	灰色轮毂电机轮胎 250X90 T150	1	GREY MOTORWHEEL TYRE 250X90 T150
2	E040255	碳刷组件 T150	1	BRUSH ROTOR (1 Pcs) T150
3	E080172	线束 2537120A T150	1	BRUSH TERM. BASET (1 Pcs) T150



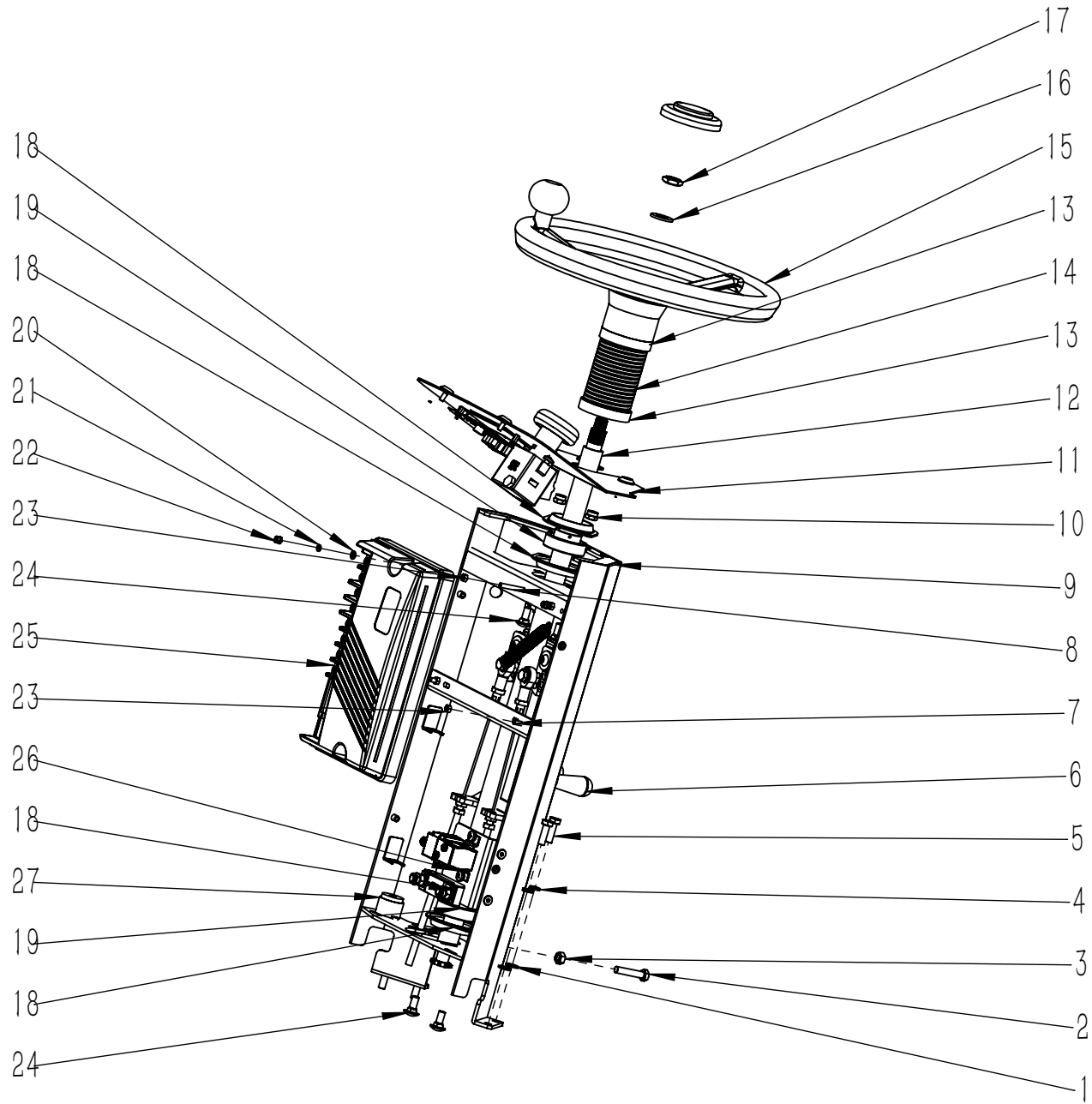
项目号 ITEM	零件号 P/N	数量 QTY	名称	DESCRIPTION
1	W020015	1	微型水泵水路组件 T150	WATER ASSEMBLY T150
2	F020003	1	快速接头 3/8 D=12 d=10	CONNECTOR 3/8 D=12 d=10
3	F010004	1	过滤器 3/8	FILTER 3/8
4	F020019	1	外丝接头 1/2—3/8 不锈钢	CONNECTOR 1/2-3/8 A2
5	A020007	1	过滤器支架 65x35	SUPPORT 65x35
6	F010001	1	球阀 1/2	BALL VALVE 1/2 D=10
7	F020002	1	快速接头 1/2 D=12 d=10	CONNECTOR 1/2
8	F050094.6	1	内嵌钢丝水管 D=18 d=13 L=280	PIPE D=18 d=13 L=280
9	F050003	2	卡箍 ϕ 10-16	CLAMP ϕ 10-16
10	F020014	1	快速接头 3/4 D=12 d=10	CONNECTOR 3/4 D=12 d=10
11	F020002	1	快速接头 1/2 D=12 d=10	CONNECTOR 1/2
12	F020016	1	快速接头 1/2 D=10 d=8	CONNECTOR 1/2
13	W020005	1	电磁阀组件	Electromagnetic valve assembly
14	A060016	1	电磁阀支架 20x20	SOLENOID VALVE SUPPORT 20x20
15	N010029	2	外六角 M5x16 不锈钢	SCREW M5x16 A2
16	N040023	2	弹垫 M5 不锈钢	LOCK WASHER M5 A2
17	N030016	2	平垫 5x10x1 不锈钢	WASHER 5x10x1 A2



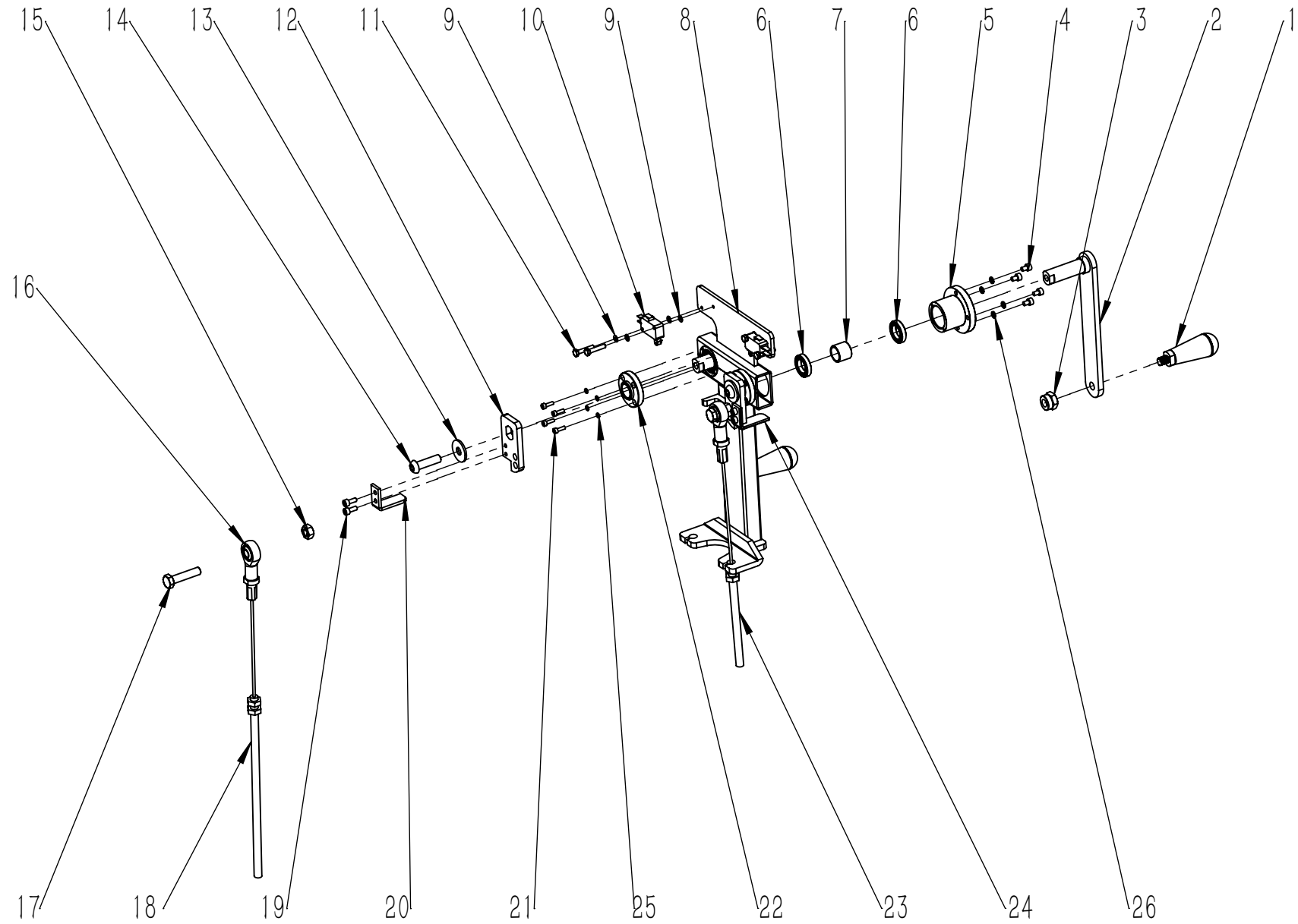
项目号 ITEM	零件号 P/N	数量 QTY	名称	DESCRIPTION
1	B070008	2	拉簧 2.8x20x109	SPRING 2.8x20x109
2	N060006	1	夹片式-Y型接头-Y-16	Y-CONNECTOR Y-16
3	N010089	1	外六角-M10x60-不锈钢-全牙	SCREW M10x60 A2 WHOLE TOOTH
4	N030004	1	平垫-10x20x2-镀锌	WASHER 10x20x2 ZINC
5	N080010	2	卡簧 D12	CIRCLIP Φ12
6	N010158	1	外六角 M12x110	SCREW M12x110 A2
7	N030024	1	平垫-6x12x1.6-不锈钢	WASHER 6x12x1.6 A2
8	N040011	1	弹垫-M6-不锈钢	LOCK WASHER M6 A2
9	N010182	1	外六角-M6x16-不锈钢	SCREW M6x16 A2
10	B070025	1	矩形弹簧-D10.5xD20x50-黄色	RECTANGULAR SPRING
11	N020024	4	自锁螺母-M8-不锈钢	LOCK NUT M8 A2
12	N110048	2	M10 螺杆万向轮 Φ50	M10 SCREW UNIVERSAL WHEEL Φ50
13	A050055	1	扒头下支架 T150	SUPPORT T150
14	N030010	4	平垫-8x16x1.6-不锈钢	WASHER 8x16x1.6 A2
15	A030065	2	万向轮支架-T150-随摆	SUPPORT
16	N040017	4	弹垫-M8-不锈钢	LOCK WASHER M8
17	N020062	2	螺母-M10-不锈钢	NUT M4 A2
18	N020003	1	自锁螺母-M12x1.75-镀锌	LOCK NUT M12x1.75 ZINC
19	N030011	1	平垫-12x24x2.5-镀锌	WASHER 12x24x2.5 ZINC
20	B060100	1	转动轴 D15x124	AXIS OF ROTATION Φ15x124
21	N010094	4	外六角-M8x25-不锈钢	SCREW M8x25 A2
22	A050060	1	扒头上支架-T150-随摆	SUPPORT
23	A050061	1	扒头支架连接板	SUPPORT CONNECTING PLATE
24	N030033	2	平垫-16x30x3-不锈钢	WASHER 16x30x3 A2



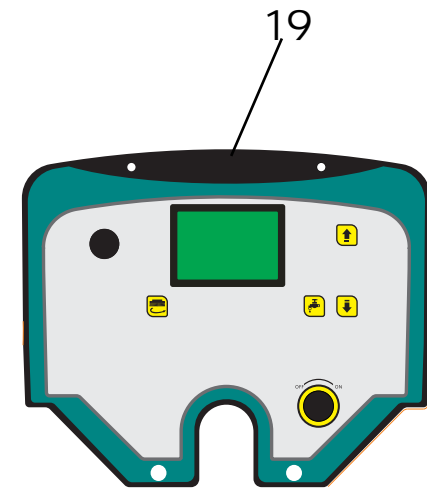
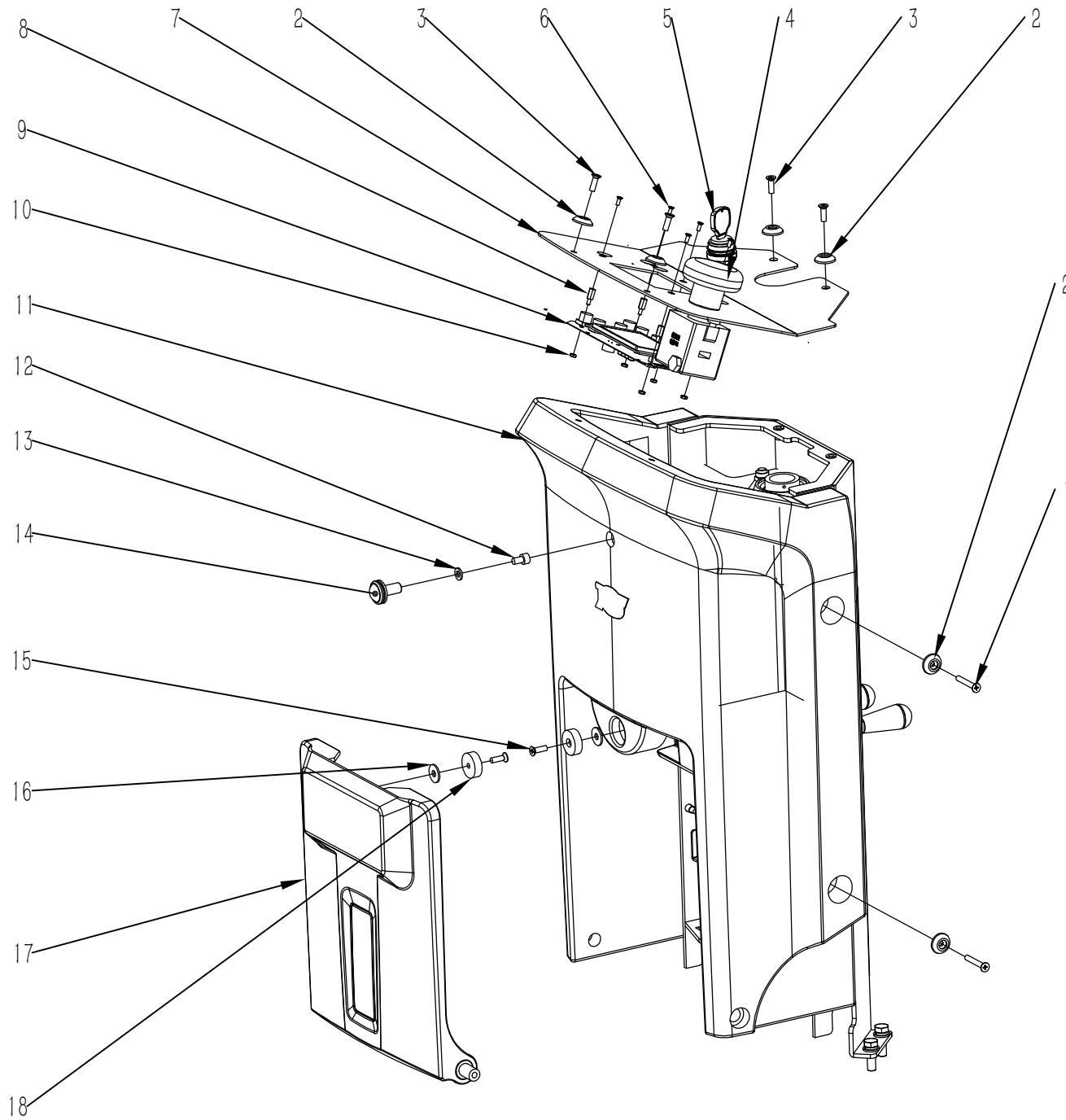
项目号 ITEM	零件号 P/N	数量 QTY	名称	DESCRIPTION
1	D010016	1	扒头主体 T150	SQUEEGEE BODY T150
2	N010146	2	外六角-M5x55-不锈钢	SCREW M5x55 A2
3	N080009	2	不锈钢搭扣 M5	HASP M5 A2
4	R030018	2	防撞轮-D100-灰色-无痕-T70-T90 双刷	WHEEL D100
5	N010144	2	外六角-M8x50-不锈钢	SCREW M8x50 A2
6	A030048	1	扒头后固定钢板 1250	BLADE 1250
7	C030033LTX	1	后橡皮刮条 1290x54x5	REAR SQUEEGE BLADE RUBBER LINATEX 1290x54x5
8	N020058	2	蝶形螺母-M8-不锈钢	WING NUT M8 A2
9	N020010	4	螺母-M8-不锈钢	NUT M8 A2
10	C020113	2	扒头快装把手 T150	QUICK INSTALL HANDLE T150
11	N030028	6	平垫-8x24x2-不锈钢	WASHER 8x24x2 A2
12	N100047	2	四星螺帽-M8-黄	NUT M8 (YELLOW)
13	B020027	2	防撞轮铜套 8x10x31	BUSHING 8x10x31
14	N030064	2	尼龙垫片 D35xD8x5	WASHER D35xD8x5 NYLON
15	N040017	4	弹垫-M8-不锈钢	LOCK WASHER M8
16	C030032LTX	1	前橡皮刮条 3x50x1217	FRONT SQUEEGE BLADE RUBBER LINATEX 3x50x1217
17	N010131	2	外六角-M8x55-不锈钢	SCREW M8x55 A2
18	N010050	2	外六角-M8x45-不锈钢	SCREW M8x45 A2
19	B050023	1	半月板 1090	PLATE 1090
20	A030047	1	刮条固定板 1090	FIXED PLATE 1090



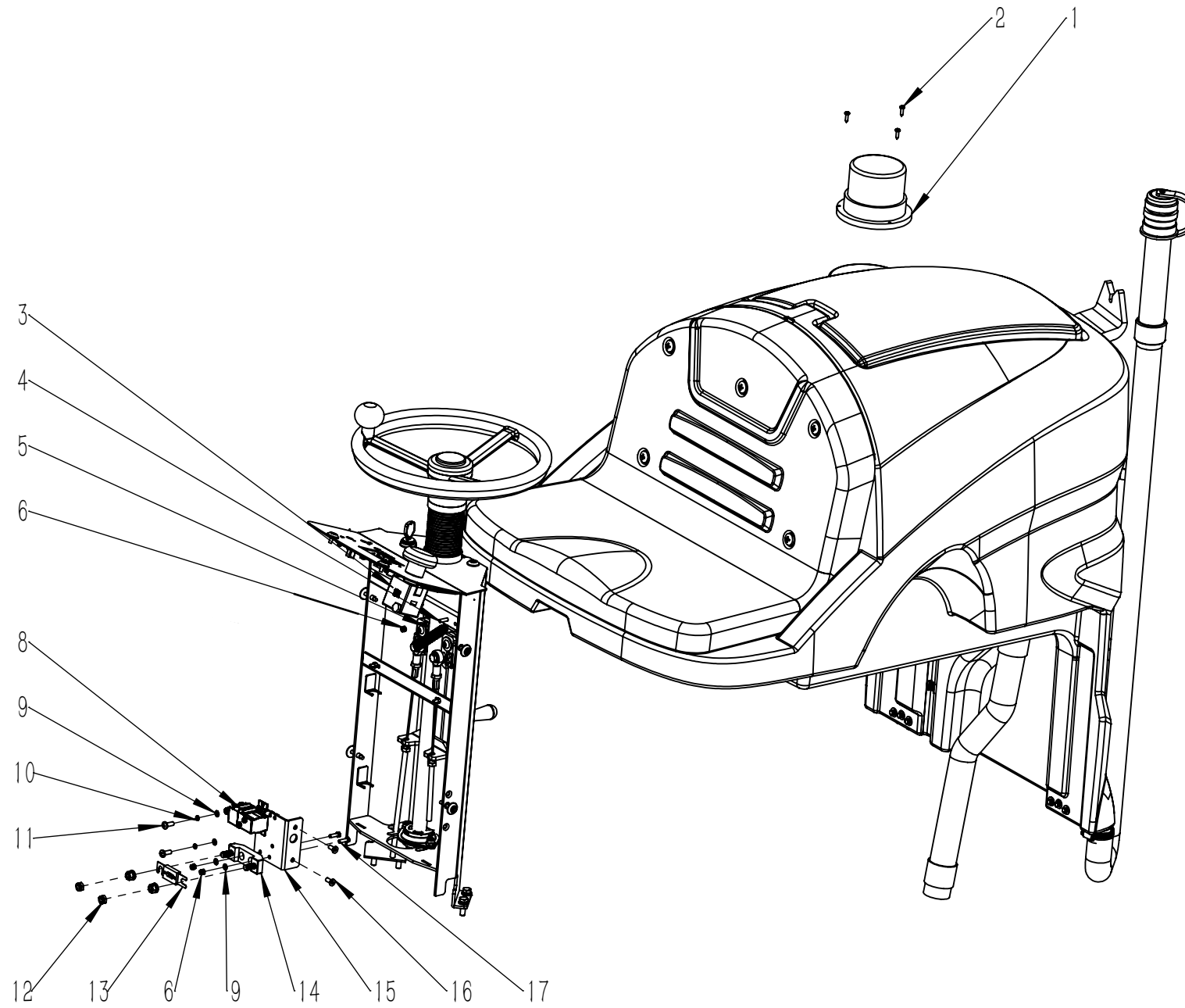
项目号 ITEM	零件号 P/N	数量 QTY	名称	DESCRIPTION
1	N030006	8	平垫-8x16x1.6-镀锌	WASHER 8x16x1.6 ZINC
2	N010173	1	外六角-M8x40-发黑	SCREW M8x40 BLACK
3	N020054	1	螺母-M8-发黑	NUT M8 BLACK
4	N040013	4	弹垫-M8-镀锌	LOCK WASHER M8 ZINC
5	N010007	4	外六角-M8x25-镀锌	SCREW M8x25 ZINC
6	W010039	1	提升摇臂组件	LEVEL ASSEMBLY
7	N010029	2	外六角-M5x16-不锈钢	SCREW M5x16 A2
8	N010079	1	外六角-M5x40-不锈钢	SCREW M5x40 A2
9	A020009-A	1	转向器支架 595x250-A	SUPPORT 595x250-A
10	N020001	8	自锁螺母-M8-镀锌	LOCK NUT M8 ZINC
11	W010035	1	控制面板组件 T150	CONTROL PANEL ASSEMBLY T150
12	B060056A	1	转向轴 D25x694	STEERING SHAFT Φ 25x694
13	N090005	2	端盖 D (65-27)x12	COLLAR Φ (65-27) x12
14	N090006	1	波纹管轴套 D50x160	SPACER Φ 50x160
15	N110036	1	方向盘-带助力球-T150	STEERING WHEEL BOOSTER BALL T150
16	N030055	1	平垫-14X28X2.5-镀锌	WASHER 14X28X2.5 ZINC
17	N020035	1	薄螺母-M14-镀锌	NUT M14 ZINC
18	N070004	4	轴承座-SBPFL-205	BEARING SUPPORT SBPFL 205
19	N070005	2	轴承-SBPFL-205	BEARING SBPFL 205
20	N030031	1	平垫-5x10x1-镀锌	WASHER 5x10x1 ZINC
21	N040007	1	弹垫-M5-镀锌	LOCK WASHER M5 ZINC
22	N020016	1	自锁螺母-M5-镀锌	LOCK NUT M5 ZINC
23	N020014	3	螺母-M5-镀锌	NUT M5 ZINC
24	N010091	4	圆头方颈螺栓-M8x20-镀锌	SCREW M8x20 ZINC
25	W020403	1	控制器组件-大能-T150	CONTROLLER ASSEMBLY DALA T150
26	N080020	1	卡簧 D24	CIRCLIP Φ 24
27	E050135	1	蜂鸣器-LZQ-2725A	BUZZER LZQ-2725A



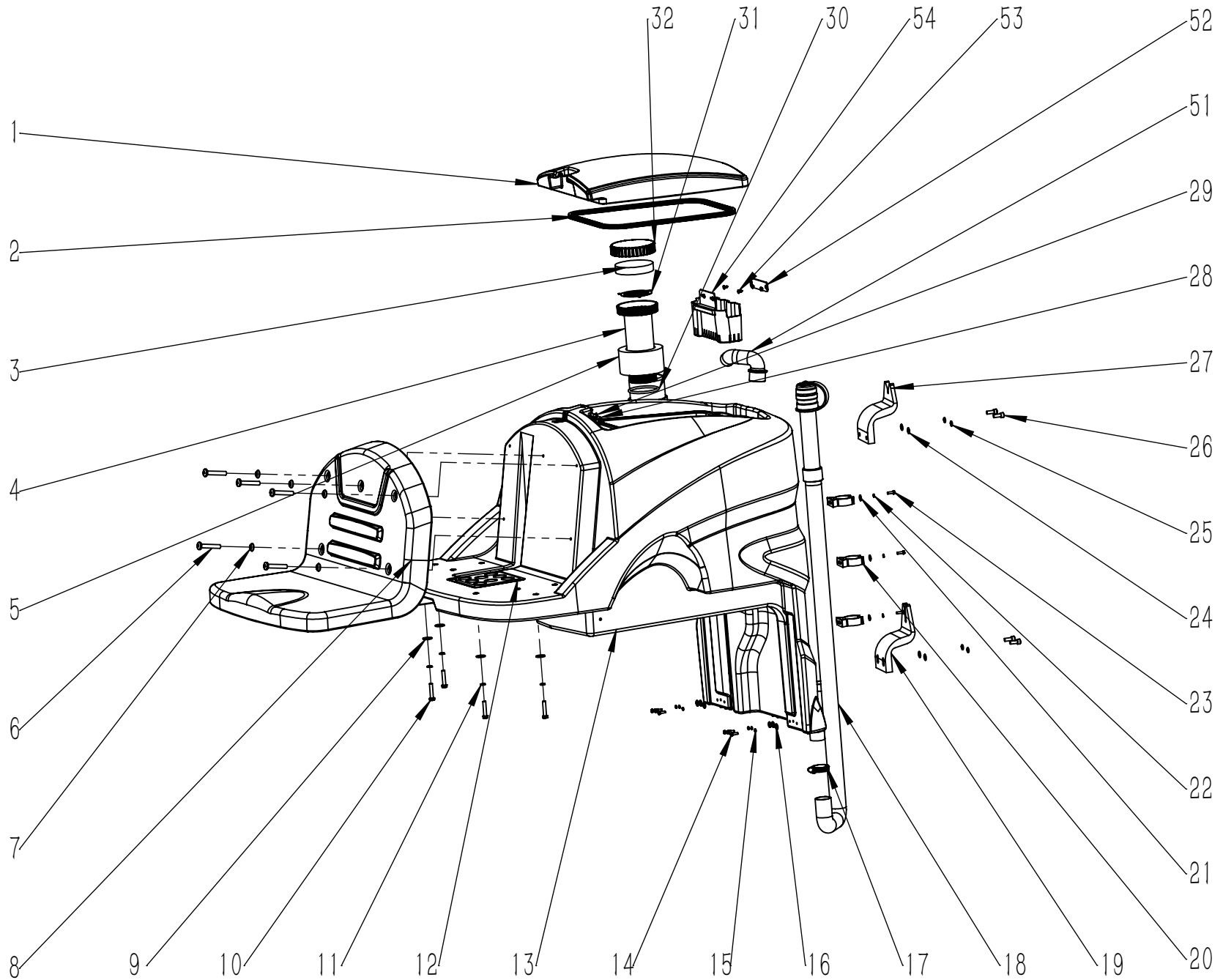
项目号 ITEM	零件号 P/N	数量 QTY	名称	DESCRIPTION
1	N100004	2	提升摇臂把手 M10	HANDLE M10
2	A020034	2	摇臂 T150	ROCKER ARM T150
3	N020002	2	自锁螺母-M10-镀锌	LOCK NUT M10 ZINC
4	N010187	8	内六角圆柱头-M4x6-不锈钢	SCREW M4x6 A2
5	B060143	2	轴承座	BEARING BLOCK
6	N070021	4	轴承-61802-24x15x5	BEARING 61802 (24x15x5)
7	B010053	2	轴套 17.5x15.1x15	AXLE SLEEVE 17.5x15.1x15
8	A020015	1	手动提升杆支架	SUPPORT
9	N030019	8	平垫-3x7x0.5-不锈钢	WASHER 3x7x0.5 A2
10	W020260	2	防水微动开关-250V-16A-常闭	MICROSWITCH 250V 16A NORMALLY SWITCH OFF
11	N010027	4	外六角-M3x20-不锈钢	SCREW M3x20 A2
12	A020017	2	限位摇臂 61x30	LEVER 61x30
13	N030028	2	平垫-8x24x2-不锈钢	WASHER 8x24x2 A2
14	N010059	2	圆头内六角-M8x20-不锈钢	SCREW M8x20 A2
15	N020018	2	螺母-M8-镀锌	NUT M8 ZINC
16	N070016	2	鱼眼轴承 M8	FISHEYE JOINT BEARING
17	N010008	2	外六角-M8x35-镀锌	SCREW M8x35 ZINC
18	B060066	1	机头拉线 995	CABLE 995
19	N010199	4	内六角圆柱头-M4x10-不锈钢	SCREW M4x10 A2
20	A050073	1	L型定位片左 T150	L-SHAPED POSITIONING PIECE LEFT T150
21	N010186	8	内六角圆柱头 (GB70.1) -M3x10-不锈钢	SCREW M3x16 A2
22	B060144	2	轴承压板	BEARING PLATE
23	B060065	1	扒头拉线 L=1460	CABLE L=1460
24	A050076	1	L型定位片右 T150	L-SHAPED POSITIONING PIECE RIGHT T150
25	N040024	8	弹垫-M3-不锈钢	LOCK WASHER M3 A2
26	N040019	8	弹垫-M4-不锈钢	LOCK WASHER M4 A2



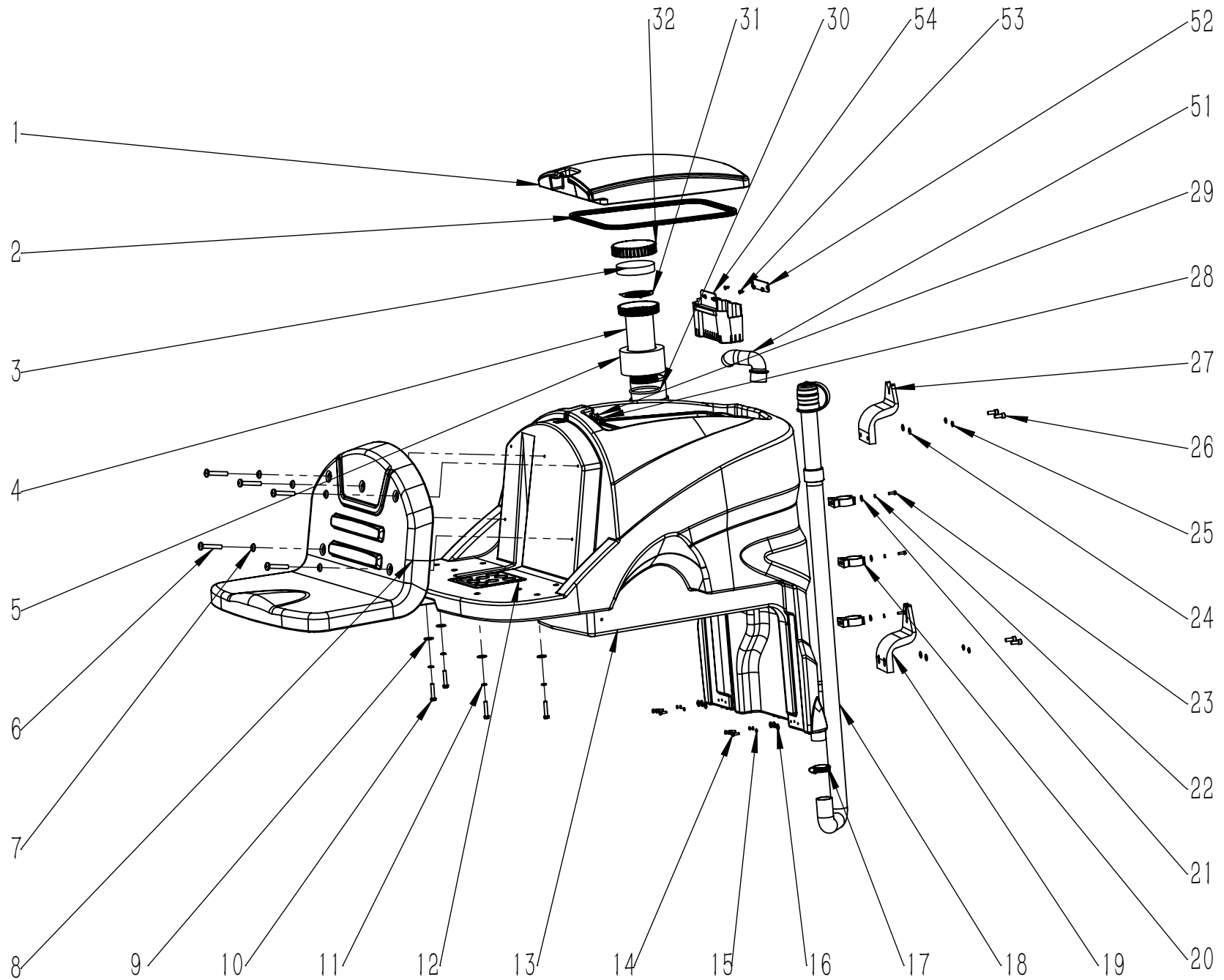
项目号 ITEM	零件号 P/N	名称	数量 QTY	DESCRIPTION
1	N010232	沉头十字-M5x35-镀黑锌	4	SCREW M5x35 BLACK ZINC PLATING
2	C020028	异形垫片 D5	8	WASHER Φ 5
3	N010230	沉头十字-M5x16-镀黑锌	4	SCREW M5x16 BLACK ZINC PLATING
4	E020092	急停开关 双常闭	1	EMERGENCY STOP DOUBLE NORMALLY CLOSED
5	W020013	钥匙开关组件 双开	1	KEY SWITCH ASSEMBLY
6	N010103	十字沉头-M3x8-不锈钢	5	SCREW M3x8 A2
7	A020014A	控制面板 T150 大能	1	INSTRUMENT BOARD T150 DALA
8	B020043	尼龙螺柱 M3x10+6	5	NYLON STUD M3x10+6
9	W020428	控制面板组件-大能-T150-TVX	1	CONTROL PANEL ASSEMBLY DALA T150 TVX
10	B060165	尼龙螺母 M3	5	NYLON NUT M3
11	C010017	转向器外罩 T150	1	COVER T150
12	N010237	内六角圆柱头-M6x10 镀锌	1	SCREW M6x10 ZINC
13	N030007	平垫 6x12x1.6 镀锌	1	WASHER 6x12x1.6 ZINC
14	W020488	蓝色鹰眼灯	1	BLUE LIGHT
15	N010134	沉头十字螺栓-M5x16-不锈钢	2	SCREW M5x16 A2
16	N030022	平垫-6x18x1.6-不锈钢	2	WASHER 6x18x1.6 A2
17	C010016	转向器前挡板 T150	1	DOOR T150
	E050111	前罩灯-36V-115×44×22	1	HEADLIGHT 36V (115x44x22)
18	N060007	磁铁-D25xD5x8-17KG	2	MAGNET Φ 25x Φ 5x8-17KG
19	C040017A	控制面板标签 T150	1	CONTROL PANEL LABEL T150



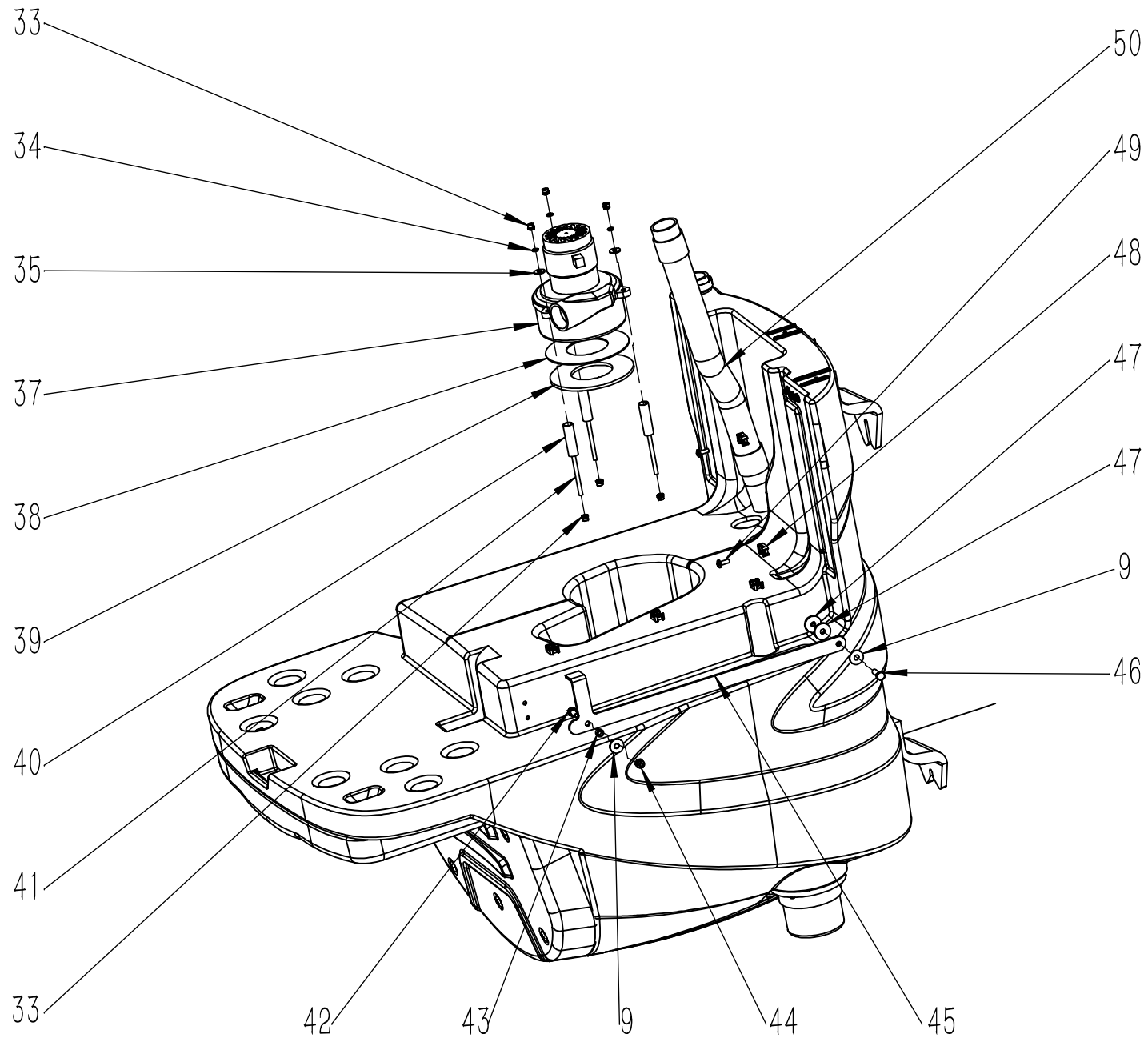
项目号 ITEM	零件号 P/N	数量 QTY	名称	DESCRIPTION
1	W020281	1	警示灯组件 T150	WARNING LIGHT ASSEMBLY T150
2	N010052	3	圆头十字自攻螺丝-M4.2x16-不锈钢	SELF TAPPING SCREW M4.2x16 A2
3	W020271	1	喇叭按钮组件	HORN BUTTON ASSEMBLY
4	N010062	1	外六角-M5x20-镀锌	SCREW M5x20 ZINC
5	N020014	1	螺母-M5-镀锌	NUT M5 ZINC
6	N020016	3	自锁螺母-M5-镀锌	LOCK NUT M5 ZINC
8	E050134	1	直流接触器-36V-80A	DC CONTACTOR 36V 80A
9	N030031	4	平垫-5x10x1-镀锌	WASHER 5x10x1 ZINC
10	N040007	2	弹垫-M5-镀锌	LOCK WASHER M5 ZINC
11	N010073	2	圆头十字螺丝-M5x16-镀锌	SCREW M5x16 ZINC
12	N020024	2	自锁螺母-M8-不锈钢	LOCK NUT M8 A2
13	E050005	1	保险 80A	FUSE 80A
14	E050004	1	保险座 80A	FUSE HOLDER 80A
15	A060039	1	安装支架 80x90	MOUNTING BRACKETS 80X90
16	N010365	2	沉头内六角-M6X16-镀黑锌	SCREW M6X16 BLACK ZINC
17	N010025	2	外六角-M5x16-镀锌	SCREW M5x16 ZINC
18	E080190	1	线束 T150-DALA	WIRE HARNESS T150 DALA



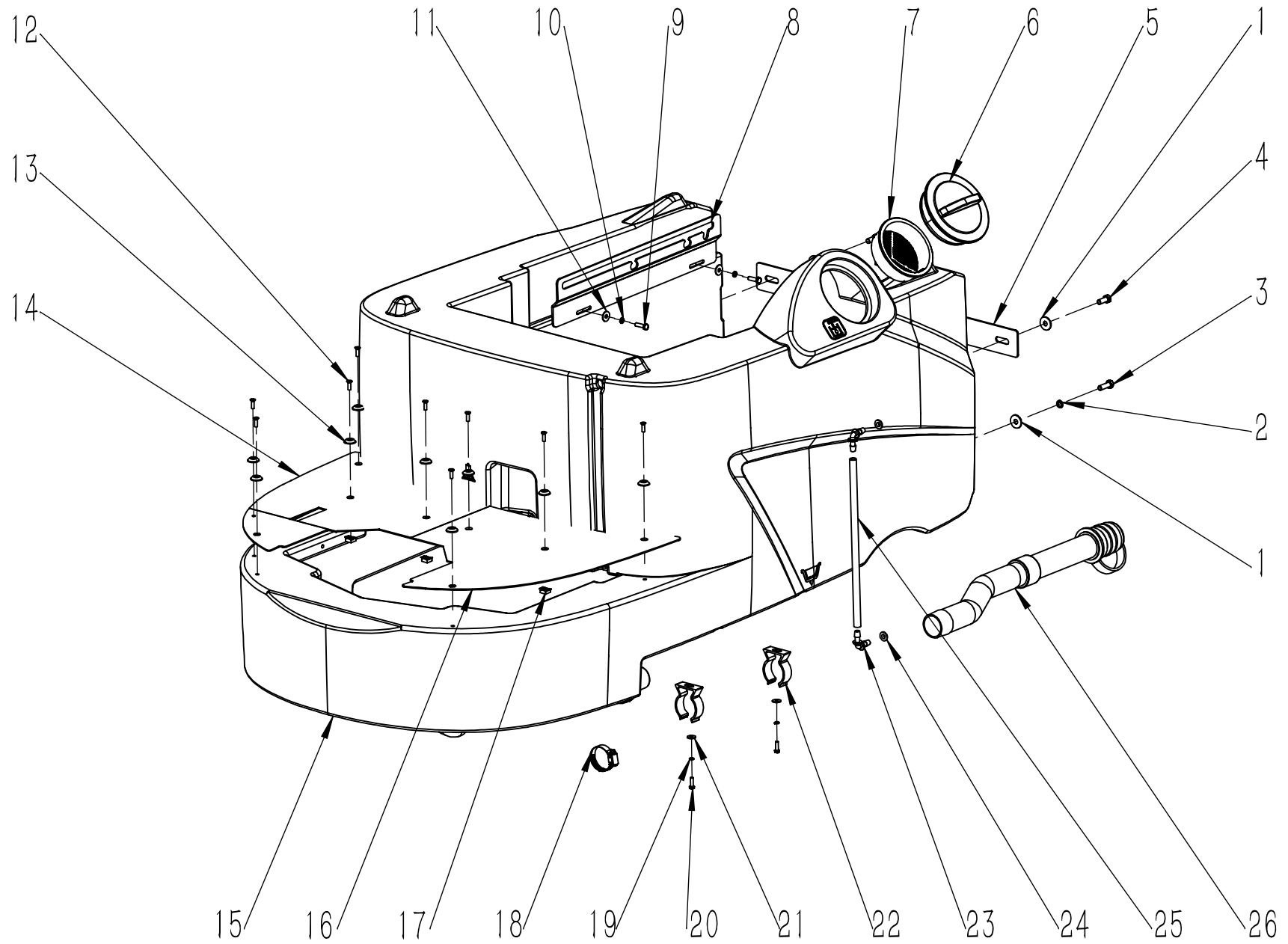
项目号 ITEM	零件号 P/N	数量 QTY	名称	DESCRIPTION
1	C010003	1	污水箱盖板	RECOVERY TANK COVER
2	N090010.1	1	污水箱上盖密封条 L=1280	RUBBER SEAL STRIP L=1280
3	F040002	1	吸水口消音海绵 D103x20	SPONGE Φ103x20
4	C020018	1	吸水口主体 D74x210	SUCTION BODY Φ74x210
5	F040004	1	浮球 D80x64	FLOATER Φ80x64
6	N010172	5	圆头十字-M6x20-发黑	SCREW M6x20 BLACK
7	C020028	5	异形垫片 D5	WASHER Φ5
8	C010018	1	坐垫 T150	SEAT T150
9	N030027	6	平垫-8x24x2-镀锌	WASHER 8x24x2 ZINC
10	N010043	4	外六角-M8x40-镀锌	SCREW M8x40 ZINC
11	N040013	4	弹垫-M8-镀锌	LOCK WASHER M8 ZINC
12	W020329	1	压力开关组件-150x135x5-常开	PRESSURE SWITCH ASSEMBLY 150x135x5 N.O.
13	C010015	1	污水箱 T150	RECOVERY TANK T150
14	N010025	6	外六角-M5x16-镀锌	SCREW M5x16 ZINC
15	N040007	6	弹垫-M5-镀锌	LOCK WASHER M5 ZINC
16	N030013	6	平垫-5x15x1.2-镀锌	WASHER 5x15x1.2 ZINC
17	F050006	1	卡箍 D33-57	SCREW CLAMP Φ33-57
18	F060015	1	排污管 D38x1200	DRAINAGE PIPE Φ38x1200
19	C020115	1	扒头下挂钩 T150	SQUEEGEE UNDER HOOK T150
20	C020265	4	加强管托 D43	REINFORCED TUBE SUPPORT D43
21	N030040	4	平垫-5x15x1.2-不锈钢	WASHER 5x15x1.2
22	N040023	4	弹垫-M5-不锈钢	LOCK WASHER M5
23	N010029	4	外六角-M5x16-不锈钢	SCREW M5x16 A2
24	N030010	4	平垫-8x16x1.6-不锈钢	WASHER 8x16x1.6 A2
25	N040017	4	弹垫-M8-不锈钢	LOCK WASHER M8
26	N010040	4	内六角圆柱头螺栓-M8x20-不锈钢	SCREW M8x20 A2
27	C020114	1	扒头上挂钩 T150	SQUEEGEE HOOK UP T150
28	A010001	2	箱盖固定板 34x30	PLAQUE 34x30
29	N010052	4	圆头十字自攻螺丝-M4.2X16-不锈钢	SELF TAPPING SCREW M4.2x16 A2
30	N090042	1	O型密封圈 内径D67x 线径D6	O RING Φ67xΦ6



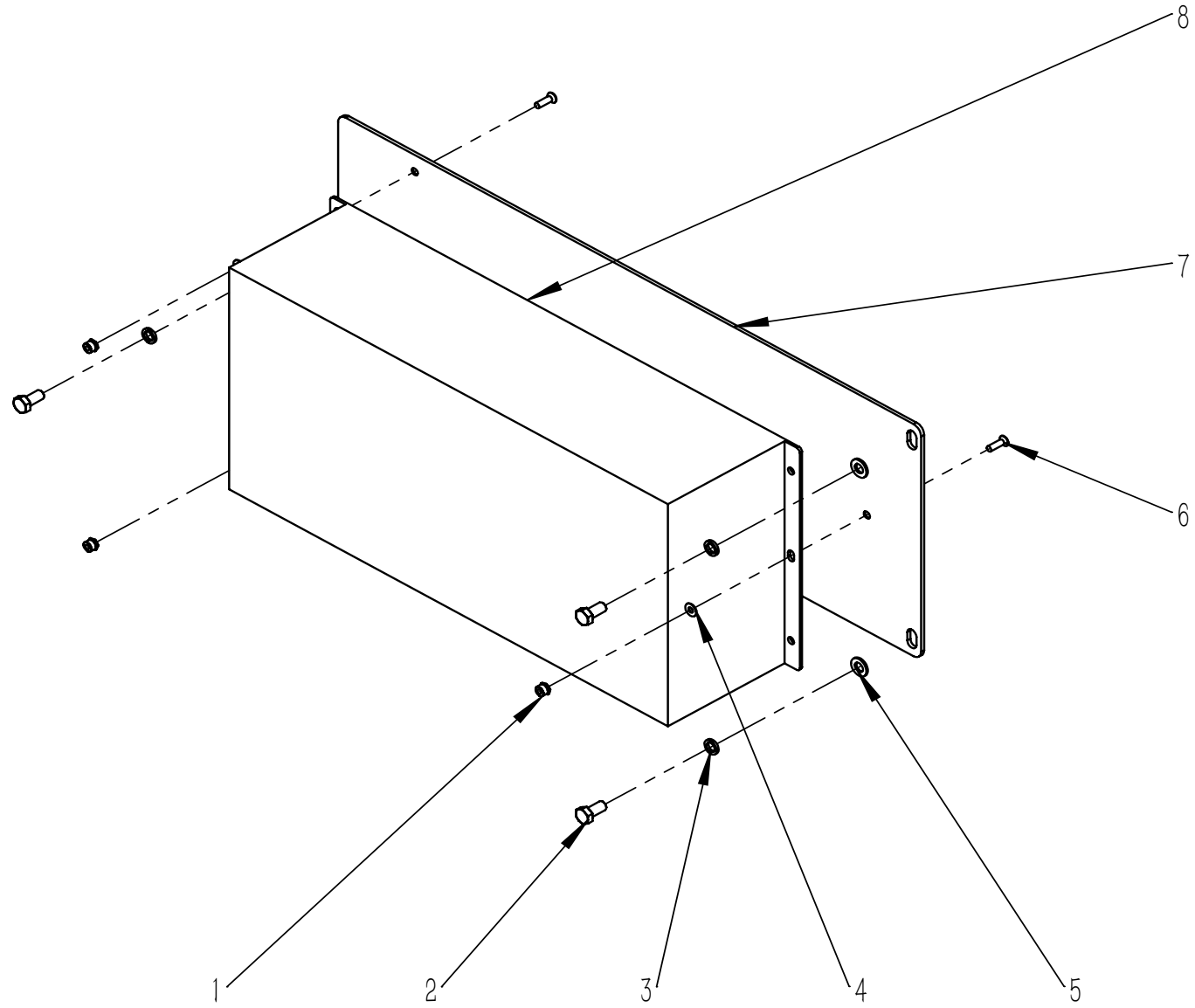
项目号 ITEM	零件号 P/N	数量 QTY	名称	DESCRIPTION
31	A030063	1	吸水口挡板	BAFFLE
32	C020019	1	吸水口盖子 D118x24	COVER Φ118x24
51	C020362	1	污水弯管 ABS	SEWAGE ELBOW ABS
52	A040107	1	过滤篮固定座 100x25x3	FILTER BASKET HOLDER 100x25x3
53	N010097	2	沉头十字自攻螺栓-M4.2x13-不锈钢	SELF TAPPING SCREW M4.2x13 A2
54	C020087	1	一级过滤器 T130	PRIMARY FILTER T130



项目号 ITEM	零件号 P/N	数量 QTY	名称	DESCRIPTION
33	N020012	6	自锁螺母-M6-镀锌	LOCK NUT M6 ZINC
34	N040001	3	弹垫-M6-镀锌	LOCK WASHER M6 ZINC
35	N030008	3	平垫-6x18x1.6-镀锌	WASHER 6x18x1.6 ZINC
37	W020288	1	吸水电机组件-36V-738W-116513-13	VACUUM MOTOR ASSEMBLY 36V 738W 116513-13
38	F040005	1	背胶-D(140-70)-3M	3M ADHESIVES GUM Φ (140-70)
39	F040001	1	吸水电机消音垫 D140x5	SPONGE Φ 140x5
40	B050046	3	支撑套管 78	SLEEVING 78
41	N100001	3	螺杆 M6x120mm	SCREW M6x120mm
42	N010034	1	外六角-M8x20-镀锌	SCREW M8x20 ZINC
43	B020011	1	铜套 8x12x6.5	BUSHING 8x12x6.5
44	N020001	1	自锁螺母-M8-镀锌	LOCK NUT M8 ZINC
45	A020011	1	加长支撑杆 500x95	PROP 500x95
46	N010007	1	外六角-M8x25-镀锌	SCREW M8x25 ZINC
47	N030034	2	平垫-8x28x3-尼龙	WASHER 8x28x3 NYLON
48	N090002	6	扎带固定座 23x16	SUPPORT 23x1
49	N010112	6	圆头十字-M5x16-不锈钢	SCREW M5x16 A2
50	F060012	1	吸污管 D. 38x800	SUCTION HOSE D. 38x800



项目号 ITEM	零件号 P/N	数量 QTY	名称	DESCRIPTION
1	N030027	4	平垫-8x24x2-镀锌	WASHER 8x24x2 ZINC
2	N040013	2	弹垫-M8-镀锌	LOCK WASHER M8 ZINC
3	N010007	2	外六角-M8x25-镀锌	SCREW M8x25 ZINC
4	N010034	2	外六角-M8x20-镀锌	SCREW M8x20 ZINC
5	A020012	1	加宽支架 600x50	SUPPORT 600x50
6	C020005	1	清水箱注水口盖子 D115	THREADED COVER Φ115
7	C020006	1	清水箱注水口滤网 D110	FILTER Φ110
8	A020010	1	加长侧支架 450x92	SUPPORT 450x92
9	N010006	2	外六角-M6x20-镀锌	SCREW M6x20 ZINC
10	N040001	2	弹垫-M6-镀锌	LOCK WASHER M6 ZINC
11	N030008	2	平垫-6x18x1.6-镀锌	WASHER 6x18x1.6 ZINC
12	N010230	9	沉头十字-M5x16-镀黑锌	SCREW M5x16 BLACK ZINC PLATING
13	C020028	9	异形垫片 D5	WASHER Φ5
14	A050030-A	1	右脚垫 R480-A	BOTTOM PLATE RIGHT R480-A
15	C010014	1	清水箱 T150	SOLUTION TANK T150
16	A050031-A	1	左脚垫 R480-A	BOTTOM PLATE LEFT R480-A
17	N020015	4	悬挂方螺母-M5-镀锌	NUT M5 ZINC
18	F050006	1	卡箍 D33-57	SCREW CLAMP Φ33-57
19	N040023	2	弹垫-M5-不锈钢	LOCK WASHER M5
20	N010029	2	外六角-M5x16-不锈钢	SCREW M5x16 A2
21	N030040	2	平垫-5x15x1.2-不锈钢	WASHER 5x15x1.2
22	B060103	2	钢管托 D43	PIPE HOLDER Φ43
23	F020001	2	快速接头 D(8-6)x30	CONNECTOR Φ(8-6)x30
24	C030013	2	密封垫 D8	GASKET Φ8
25	F050042.2	1	PU水管-D=12-d=8-L=315	PU TUBE D=12 d=8 L=315
26	F060014	1	排水管 D. 38x510	DRAINAGE PIPE D. 38x510



项目号 ITEM	零件号 P/N	数量 QTY	名称	DESCRIPTION
1	N020045	3	自锁螺母-M3-不锈钢	LOCK NUT M3 A2
2	N010048	3	外六角-M5x10-镀锌	SCREW M5x10 ZINC
3	N040007	3	弹垫-M5-镀锌	LOCK WASHER M5 ZINC
4	N030019	3	平垫-3x7x0.5-不锈钢	WASHER 3x7x0.5
5	N030031	3	平垫-5x10x1-镀锌	WASHER 5x10x1 ZINC
6	N010150	3	沉头十字螺栓-M3x10-不锈钢	SCREW M3x10 A2
7	A050120	1	内置充电器安装板 T150	CHARGER MOUNTING BRACKET T150
8	E040236	1	充电器组件-36V-25A-超威	CHARGER CW SPLIT TYPE ASSEMBLY
	E040236-A	1	充电器组件-36V-25A-AGM	CHARGER 36V25A FOR AGM BATTERY
	E040236-B	1	充电器组件-36V-25A-GEL	CHARGER 36V25A FOR GEL BATTERY
	E040236-C	1	充电器组件-36V-25A-LIT	CHARGER 36V25A FOR LIT BATTERY

项目号 ITEM	零件号 P/N	数量 QTY	名称	DESCRIPTION
1	C040017A	1	控制面板标签 T150	CONTROL PANEL LABEL T150
2	C040018	1	机器左标签 T150	LEFT LABEL T150
3	C040019	1	机器右标签 T150	RIGHT LABEL T150
4	C040020	1	标识标签 T150	DECAL T150
5	C040035	1	刷盘升降标识绿	BRUSH UP AND DOWN DECAL GREEN
6	C040036	1	扒头升降标识绿	BRUSH UP AND DOWN DECAL GREEN
7	M010005	1	纸箱-1620x920x1330-T150	CARTON BOX T150 1620x920x1330
8	N090031	2	钥匙挂件	KEYCHAIN
9	P010004	1	保修卡	WARRANTY CARD
10	M020020	1	斜坡-780x500x20-T150	T150 RAMP 780x500x20
11	P010012	1	测试报告	TEST REPORT
12	M010006	1	纸箱上盖-1640x965x100-T150	CARTON BOX COVER T150 1640x965x100
13	M010010	1	纸盒-1200x330x120-扒头 1150	1150 SQUEEGEE CARTON BOX 1200x330x120
14	M010014	1	说明书自封袋 340x240mm	PLASTIC PACKAGE BAG 340x240mm
15	M020007	18	支撑护角 50x50x100	ANGLE BEAD 50x50x100
16	M020009	4	木条-40x40x1310-T150	BATTEN T150 40x40x1310
17	M010013	1	塑料包装袋 1900x1300x1600	PLASTIC PACKAGE BAG 1900x1300x1600
18	M020004	1	木托盘-1620x920x120-T150	WOOD PALLET T150 1620x920x120
19	M020008	7	三角挡块 50x50x100	TRIANGLE BLOCK 50x50x100
20	HC10016	2	尼龙编织带短 175x35mm	NYLON BRAIDED TAPEN SHORT 175x35
21	HC10005	50	P 钉	P NAIL
22	HC10017	8	封箱钉 35mmx18mm	SEALING BOX NAIL 35mmx18mm
23	N030040	4	平垫-5x15x1.2-不锈钢	WASHER 5x15x1.2
24	N010159	4	沉头十字自攻螺丝-ST4x25-发黑	SELF TAPPING SCREW ST4x25 BLACK
25	N010160	12	沉头十字自攻螺丝-ST4x40-发黑	SELF TAPPING SCREW ST4x40 BLACK

项目号 ITEM	零件号 P/N	名称	数量 QTY	DESCRIPTION
1	C030171	刷盘防溅条左-无痕-灰色-T150	1	LEFT RUBBER SKIRT T150
2	C030172	刷盘防溅条右-无痕-灰色-T150	1	RIGHT RUBBER SKIRT T150
3	C030032PU		1	FRONT SQUEEGE BLADE RUBBER PU 1217x50x5
4	C03003PU		1	REAR SQUEEGE BLADE RUBBER PU 1290x54x835
5	N150045		1	19" LOCK WATER BRUSH PP0.5
6	N150001		1	19" BRUSH PP0.6
7	N150004		1	19" PAS HOLDER
8	N150006		1	19" BRUSH PP 0.28