



— SCHEMATIC DRAWINGS —

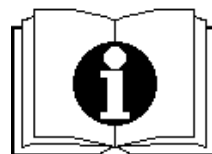
装配示意图

手推式洗地机 T55 / 50 BT+

Scrubber Dryer T55 / 50 BT+

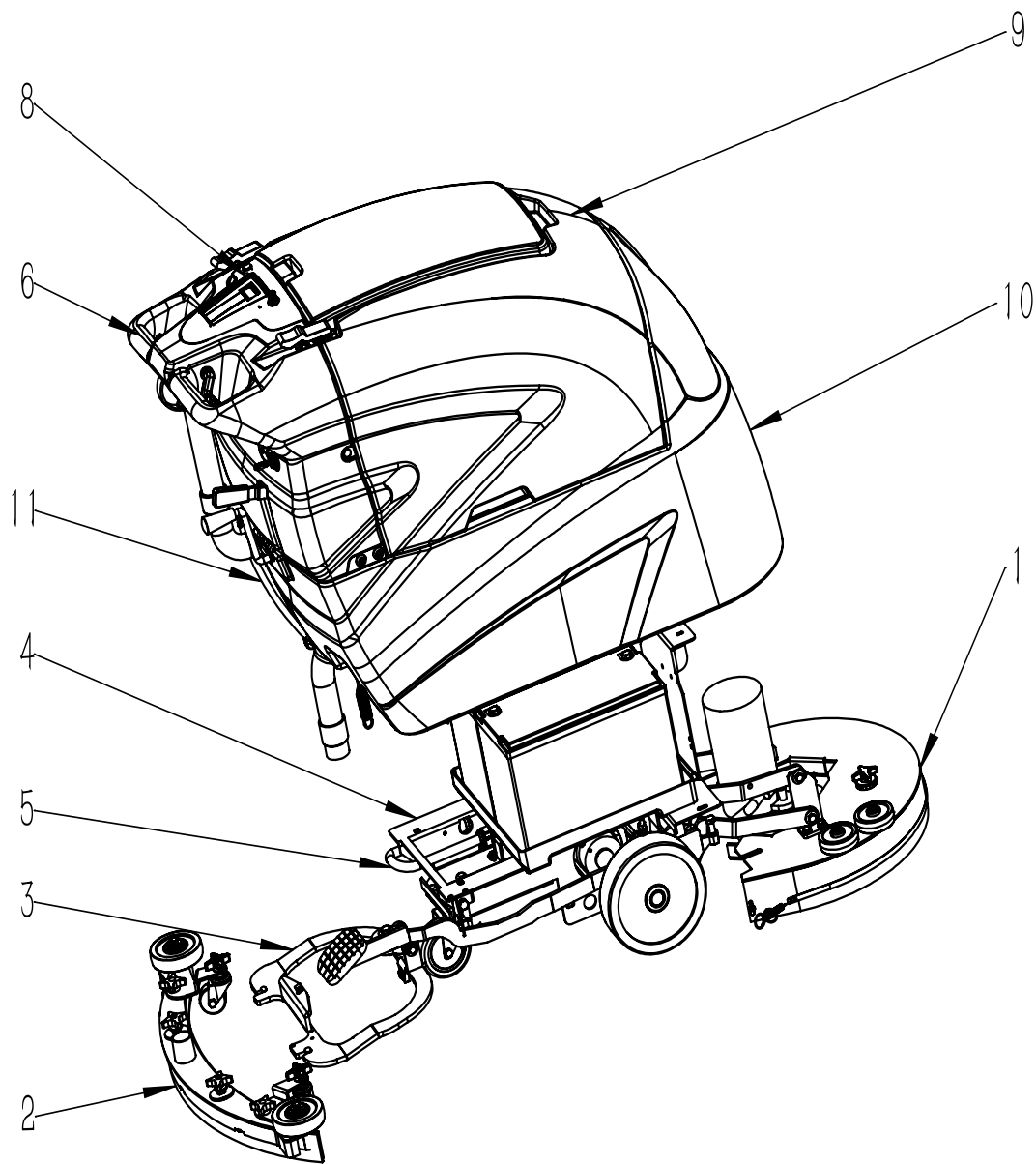
Issued in Aug. 2023

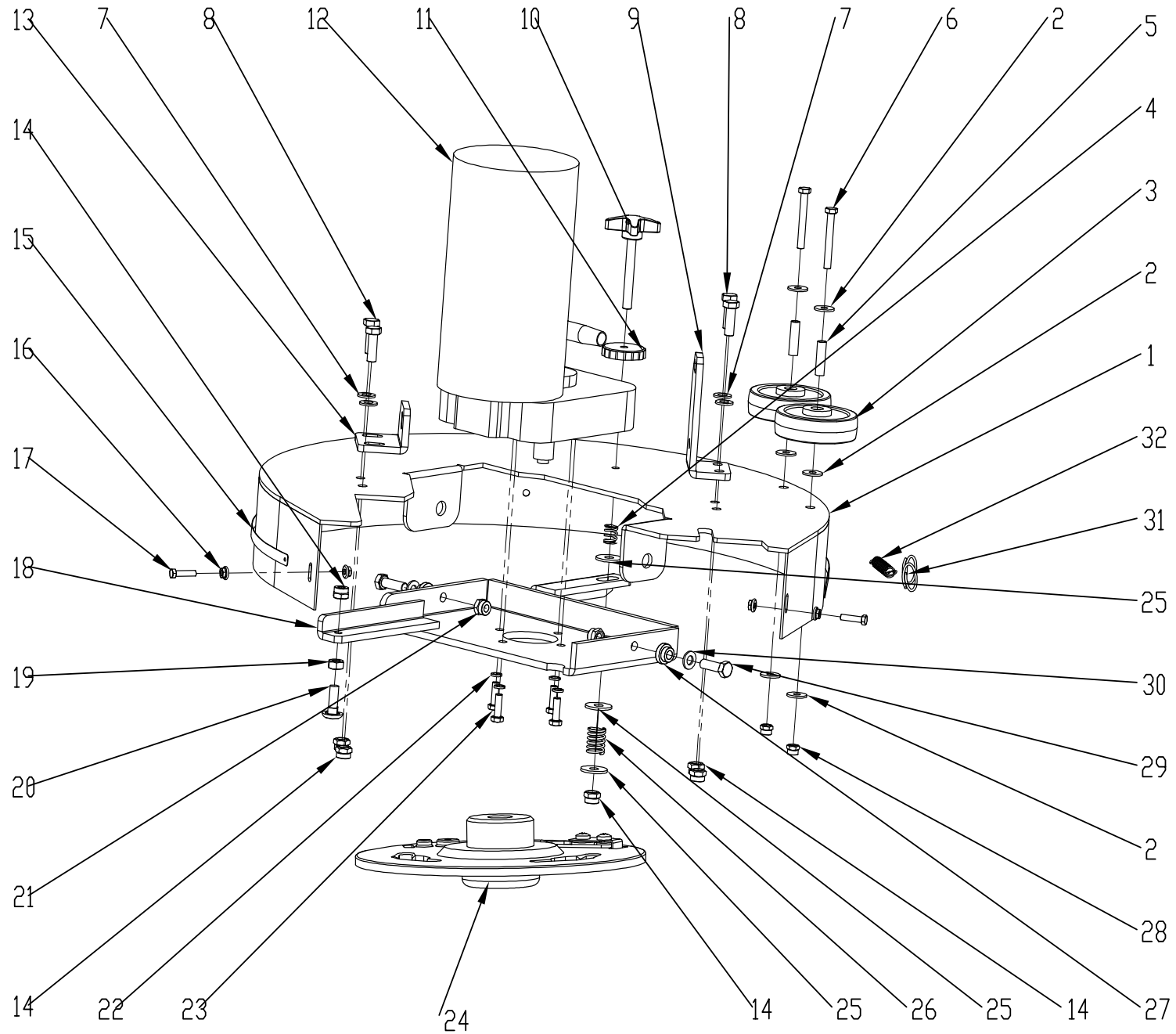
Version: V10



## 目 录

1. 机头组件	1—4
2. 扒头组件	5—6
3. 扒头支架组件	7—8
4. 底座架组件	9—14
5. 水路组件	15—16
6. 手柄盒组件	17—18
7. 电路板支架组件	19—22
8. 控制面板组件	23—24
9. 污水箱组件	25—28
10. 清水箱组件	29—30
11. 整机组件	31—32
12. 包装组件	33—37

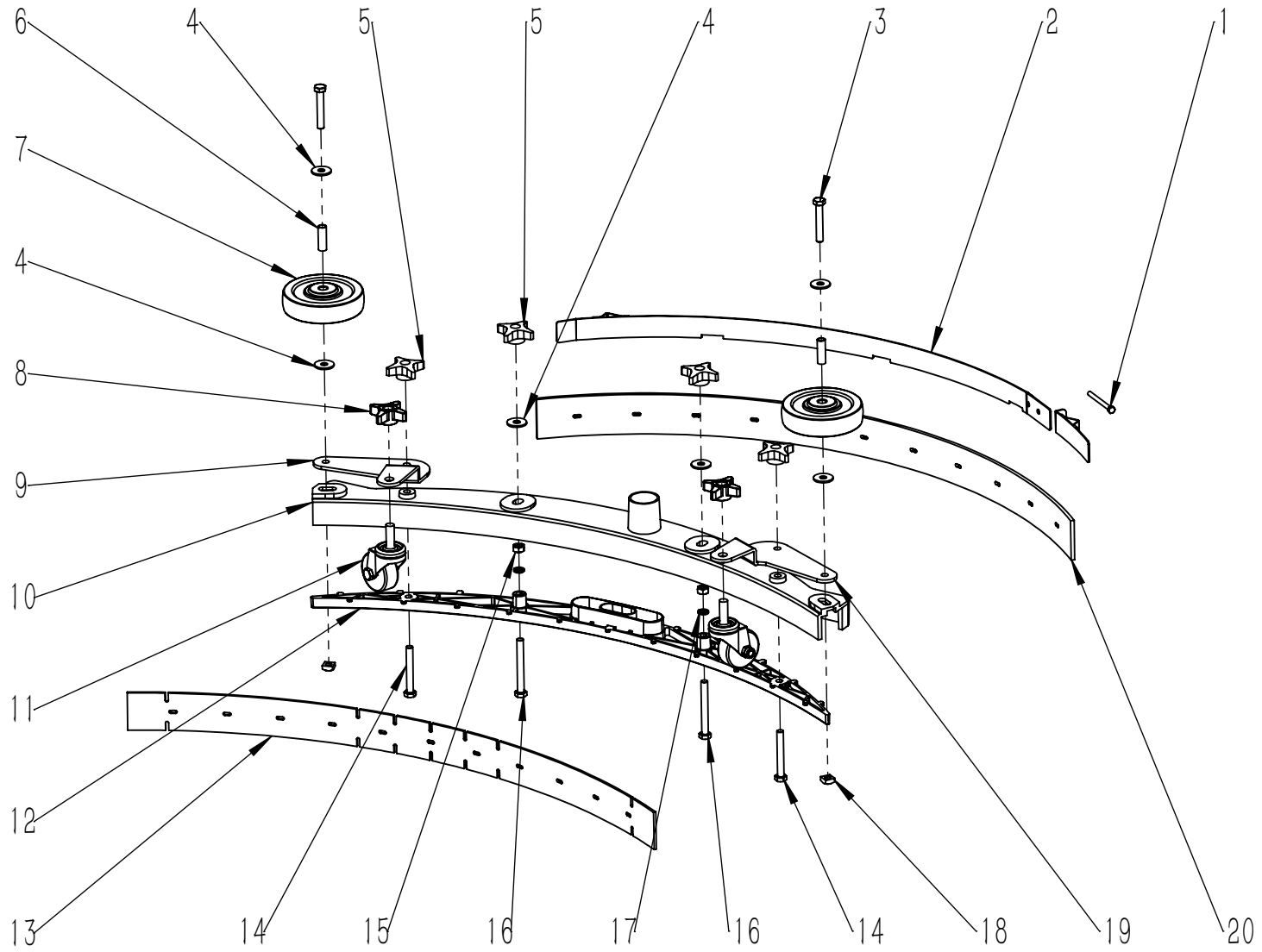




项目号 ITEM	零件号 P/N	数量 QTY	名称	DESCRIPTION
1	A040016	1	机头外罩 Φ518	COVER Φ518
2	N030022	6	平垫 6x18x1.6 不锈钢	WASHER 6x18x1.6 A2
3	N110001	2	防撞轮 Φ75	WHEEL Φ75
4	B060001	1	压簧 1.5x12x15	SPRING 1.5x12x15
5	B020010	2	防撞轮铜套 6x8x30	BUSHING 6x8x30
6	N010087	2	外六角-M6x50-不锈钢-全牙	SCREW M6x50 A2
7	N030006	4	平垫 8x16x1.6 镀锌	WASHER 8x16x1.6 ZINC
8	N010007	4	外六角 M8x25 镀锌	SCREW M8x25 ZINC
9	A040041	1	机头支座 38x51x108	SUPPORT 38x51x108
10	N100003	1	调节手柄 M8x60	ADJUSTER M8x60
11	N020009	1	花型螺母 M8	NUT M8
12	W020240	1	刷盘电机组件-24V-500W-140RPM	BRUSH MOTOR ASSEMBLY 24V 500W 140RPM
13	A040040	1	机头支座 45x55x40	SUPPORT 45x55x40
14	N020001	6	自锁螺母 M8 镀锌	LOCK NUT M8 ZINC
15	A040019	1	防溅条紧固钢条 10x1050	BLADE 10x1050
16	N020004	4	法兰面螺母 M5 镀锌	NUT M5 ZINC
17	N010062	2	外六角 M5x20 镀锌	SCREW M5x20 ZINC
18	A040012	1	电机座 240X353	MOTOR SUPPORT 240X353
19	N020018	1	螺母 M8 镀锌	NUT M8 ZINC
20	N010014	1	圆头方径螺栓 M8x25 镀锌	SCREW M8x25 ZINC
21	N020024	2	自锁螺母-M8-不锈钢	LOCK NUT M8 A2
22	N040001	4	弹垫-M6-镀锌	LOCK WASHER M6 ZINC
23	N010006	4	外六角-M6x20-镀锌	SCREW M6x20 ZINC
24	W020077	1	刷盘锁紧器组件 左	BRUSH HOLDER ASSFMBLY
25	N030027	3	平垫-8x24x2-镀锌	WASHER 8x24x2 ZINC
26	B070019	1	压簧 2x16.6x23	SPRING 2x16.6x23
27	B020009	2	轴套 8x18x(8-3.5)	SPACER 8x18x(8-3.5)

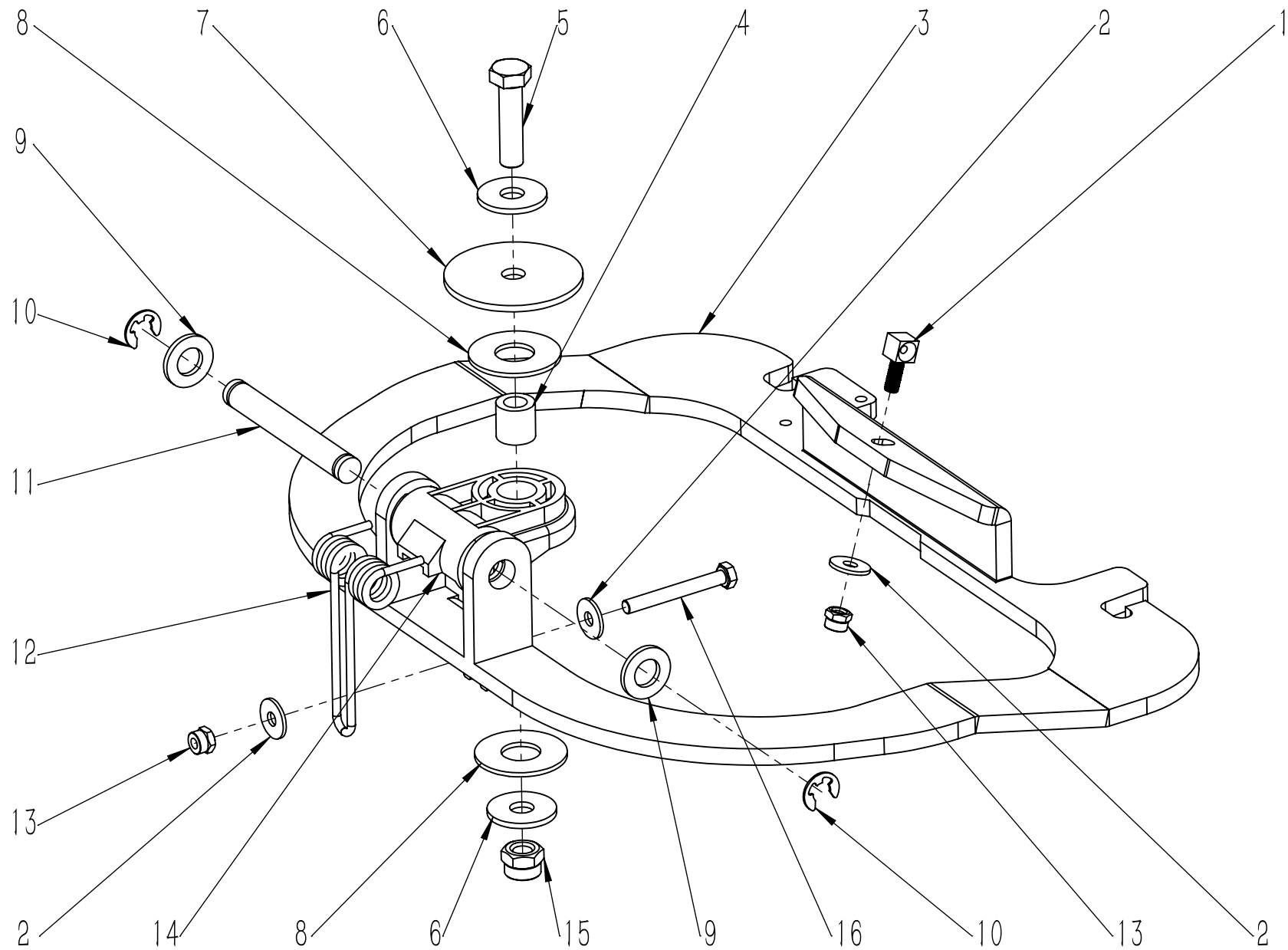


项目号 ITEM	零件号 P/N	数量 QTY	名称	DESCRIPTION
28	N020006	2	自锁螺母-M6-不锈钢	LOCK NUT M6 A2
29	N010094	2	外六角-M8x25-不锈钢	SCREW M8x25 A2
30	N030010	2	平垫-8x16x1.6-不锈钢	WASHER 8x16x1.6 A2
31	B070010	1	异型套圈 2x26	RING 2x26
32	B060012	1	钢条拉簧 1.1x10x55	SPRING 1.1x10x55

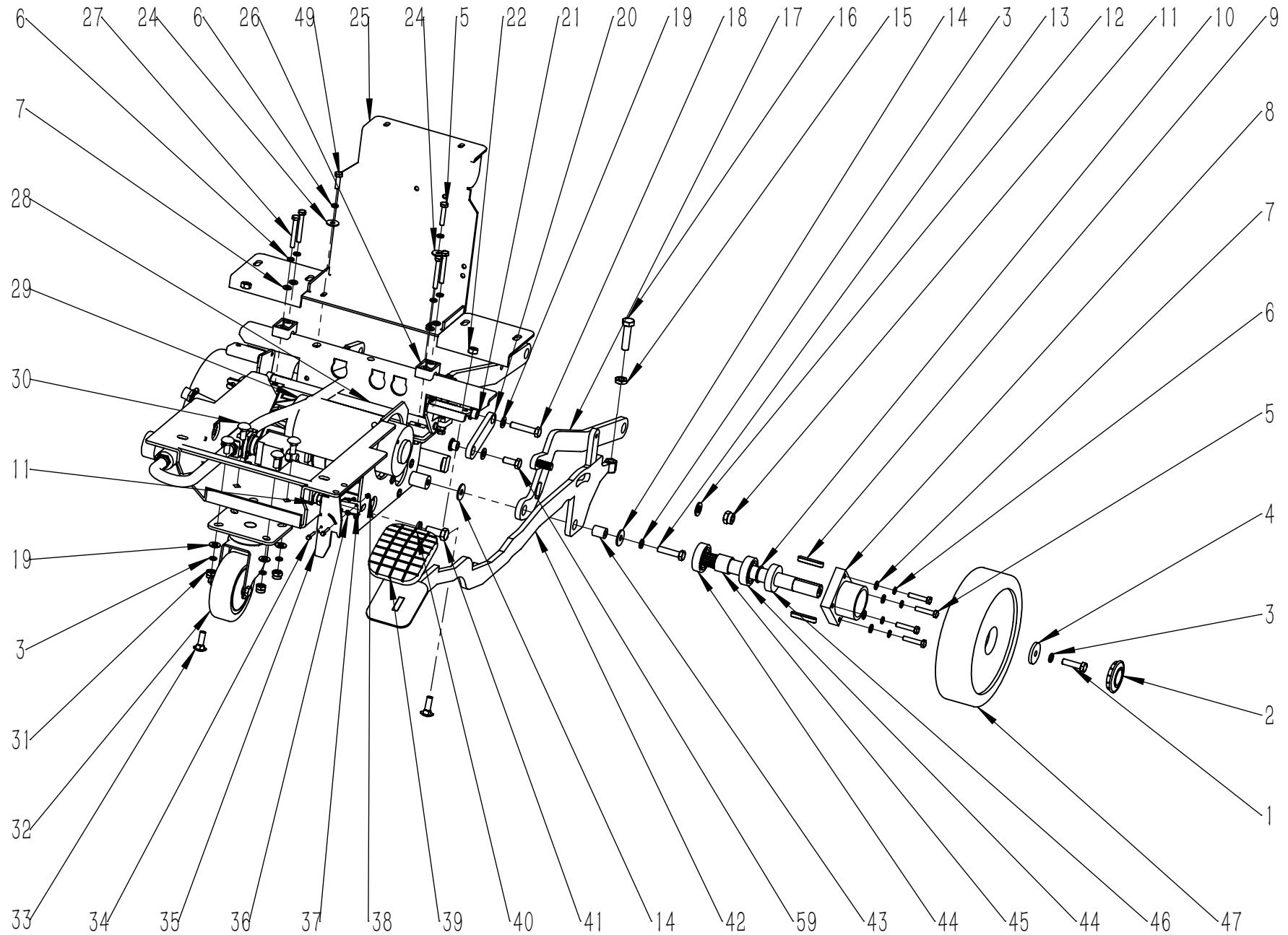


项目号 ITEM	零件号 P/N	数量 QTY	名称	DESCRIPTION
1	N010146	1	外六角-M5x55-不锈钢	SCREW M5x55 A2
2	A030035	1	扒头后固定钢板 820	PLATES 820
3	N010144	2	外六角-M8x50-不锈钢	SCREW M8x50 A2
4	N030028	6	平垫-8x24x2-不锈钢	WASHER 8x24x2 A2
5	N100005	4	四星螺帽 M8x22	NUT M8x22
6	B020027	2	防撞轮铜套 8x10x31	BUSHING 8x10x31
7	N110019	2	防撞轮 D100x29.5	WHEEL Φ100x29.5
8	C020253	2	万向轮星型把手 M10	UNIVERSAL WHEEL STAR HANDLE M10
9	A030105	1	万向轮支架右 760 新	SUPPORT RIGHT 760 NEW
10	D010042	1	扒头主体 760 新	SQUEEGEE BODY 760 NEW
11	N110048	2	M10 螺杆万向轮Φ50	M10 SCREW UNIVERSAL WHEEL Φ50
12	B050069	1	半月板 760 新	PLATE 760 NEW
13	C030014	1	前刮条-橡皮-3x50x785	FRONT SQUEEGE BLADE RUBBER 3x50x785
14	N010128	2	外六角-M8x60-不锈钢	SCREW M8x60 A2
15	N020010	2	螺母-M8-不锈钢	NUT M8 A2
16	N010127	2	外六角-M8x70-不锈钢-全牙	SCREW M8x70 A2
17	N040017	2	弹垫-M8-不锈钢	LOCK WASHER M8
18	N020011	2	方形螺母-M8-13x13x6.5-不锈钢	NUT M8 13x13x6.5 A2
19	A030104	1	万向轮支架左 760 新	SUPPORT LEFT 760 NEW
20	C030015	1	后刮条-橡皮-4.5x53x835	REAR SQUEEGE BLADE RUBBER 4.5x53x835

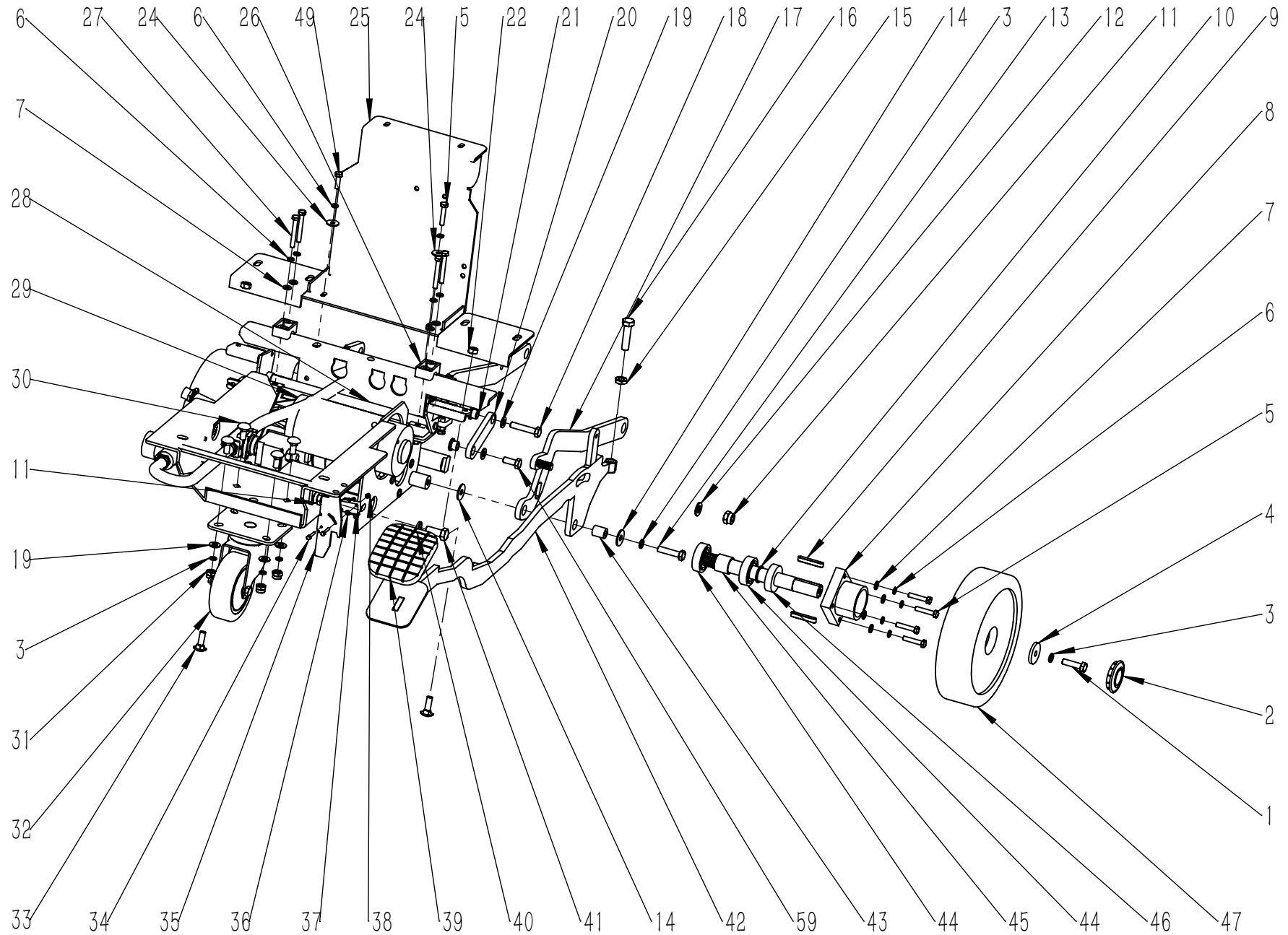




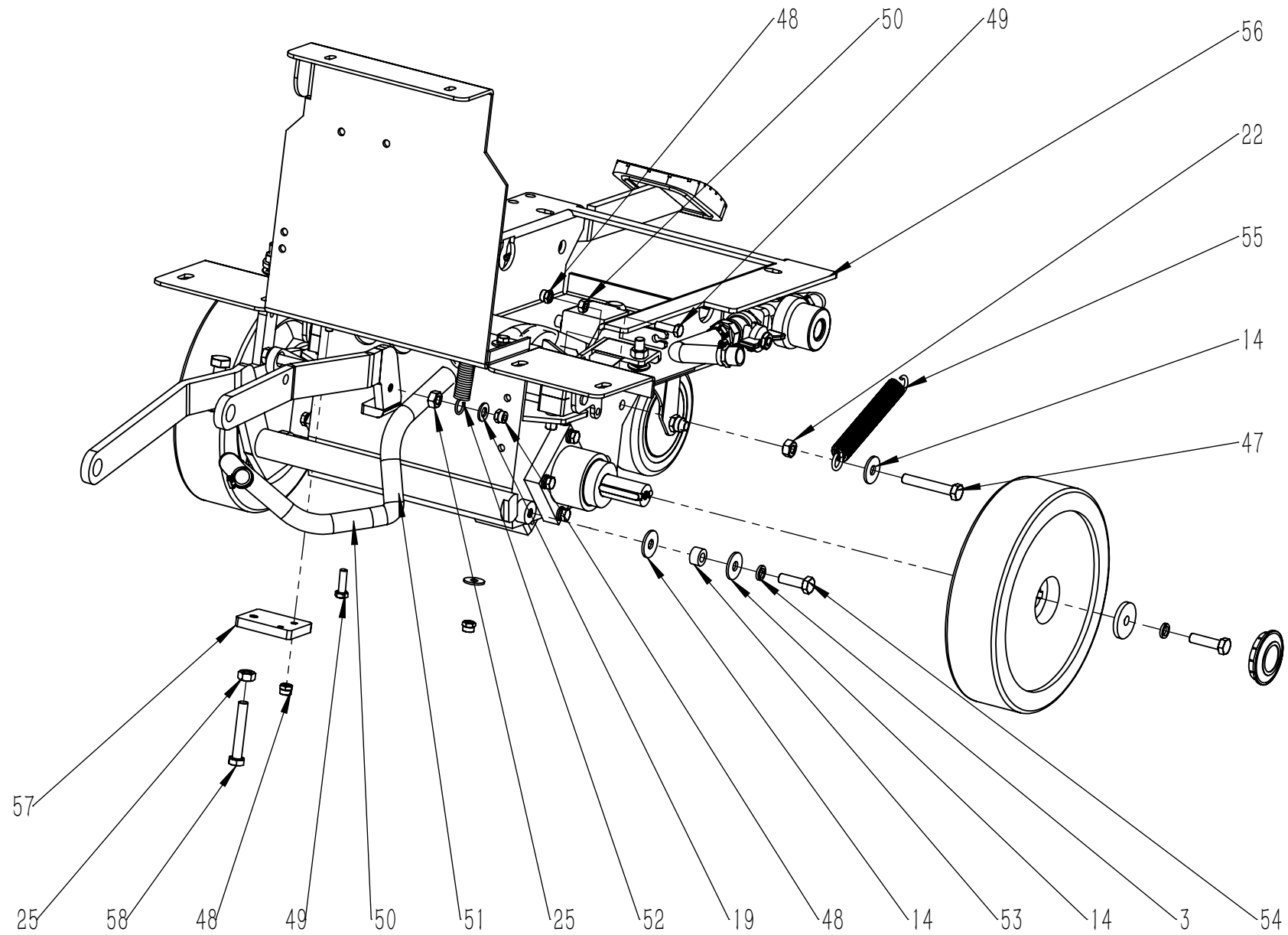
项目号 ITEM	零件号 P/N	数量 QTY	名称	DESCRIPTION
1	B060035	1	方头带孔螺栓-M6x25-镀锌	COUPLING M6x25 ZINC
2	N030008	3	平垫 6x18x1.6 镀锌	WASHER 6x18x1.6 ZINC
3	A050051	1	扒头支架 263	SUPPORT 263
4	B020003	1	铜套 10.2x17x16.5	BUSHING 10.2x17x16.5
5	N010026	1	外六角 M10x40 镀锌	SCREW M10x40 ZINC
6	N030041	2	平垫-10x30x2.5-镀锌	WASHER 10x30x2.5 ZINC
7	B050022	1	四氟垫片 10.2x60x3	WASHER 10.2x60x3
8	B050005	2	四氟垫片 17.2x40x2	WASHER 17.2x40x2
9	N030011	2	平垫 12x24x2.5 镀锌	WASHER 12x24x2.5 ZINC
10	N080005	2	卡簧 $\varnothing$ 9	CIRCLIP $\varnothing$ 9
11	B060099	1	转动轴 $\Phi$ 12x86	AXIS OF ROTATION $\Phi$ 12x86
12	B070016	1	压力弹簧 3.5x20x40.5	PRESSURE SPRING 3.5x20x40.5
13	N020012	2	自锁螺母 M6 镀锌	LOCK NUT M6 ZINC
14	D010007	1	转换座 58	COUPLING 58
15	N020002	1	自锁螺母 M10 镀锌	LOCK NUT M10 ZINC
16	N010021	1	外六角-M6x50-镀锌-全牙	SCREW M6x50 ZINC



项目号 ITEM	零件号 P/N	数量 QTY	名称	DESCRIPTION
1	N010002	2	外六角-M8x30-镀锌	SCREW M8x30 ZINC
2	C020036	2	脚轮盖 D50	COVER Φ 50
3	N040013	8	弹垫-M8-镀锌	LOCK WASHER M8 ZINC
4	B060069	2	平垫-8.5x30x4-镀锌	WASHER 8.5x30x4 ZINC
5	N010033	9	外六角-M6x30-镀锌	SCREW M6x30 ZINC
6	N040001	14	弹垫-M6-镀锌	LOCK WASHER M6 ZINC
7	N030007	12	平垫-6x12x1.6-镀锌	WASHER 6x12x1.6 ZINC
8	D010010	2	轴承座 D70	BEARING SUPPORT Φ 70
9	N060001	4	平键 6x40	FLAT KEY 6x40
10	B060026	2	驱动轴 D20x185	AXLE SHAFT Φ 20x185
11	N020002	2	自锁螺母-M10-镀锌	LOCK NUT M10 ZINC
12	N030004	1	平垫-10x20x2-镀锌	WASHER 10x20x2 ZINC
13	N010008	1	外六角-M8x35-镀锌	SCREW M8x35 ZINC
14	N030027	5	平垫-8x24x2-镀锌	WASHER 8x24x2 ZINC
15	N020053	1	六角薄螺母-M10-镀锌	NUT M10 ZINC
16	N010026	1	外六角-M10x40-镀锌	SCREW M10x40 ZINC
17	A040015	1	机头上支架 259	FRAME UP 259
18	N010043	1	外六角-M8x40-镀锌	SCREW M8x40 ZINC
19	N030006	7	平垫-8x16x1.6-镀锌	WASHER 8x16x1.6 ZINC
20	A040010	1	连接板 24x70	PLAQUE 24x70
21	B020005	2	铜套 8x(18-13)x10.5	BUSHING 8x(18-13)x10.5
22	N020018	5	螺母-M8-镀锌	NUT M8 ZINC
24	N030008	3	平垫-6x18x1.6-镀锌	WASHER 6x18x1.6 ZINC
25	A030003	1	电瓶挡板 448	SPLASH GUARD 448
26	C020002	4	哈氟块 23	HOLDFAST 23
27	N010114	4	外六角-M6x45-镀锌	SCREW M6x45 ZINC
28	A030001	1	刹车连杆 265	ROCKER ARM 265
29	W020263	1	驱动电机组件	DRIVE MOTOR ASSEMBLY 24V 120W 105RPM
30	N010091	4	圆头方颈螺栓-M8x20-镀锌	SCREW M8x20 ZINC
31	N020001	5	自锁螺母-M8-镀锌	LOCK NUT M8 ZINC

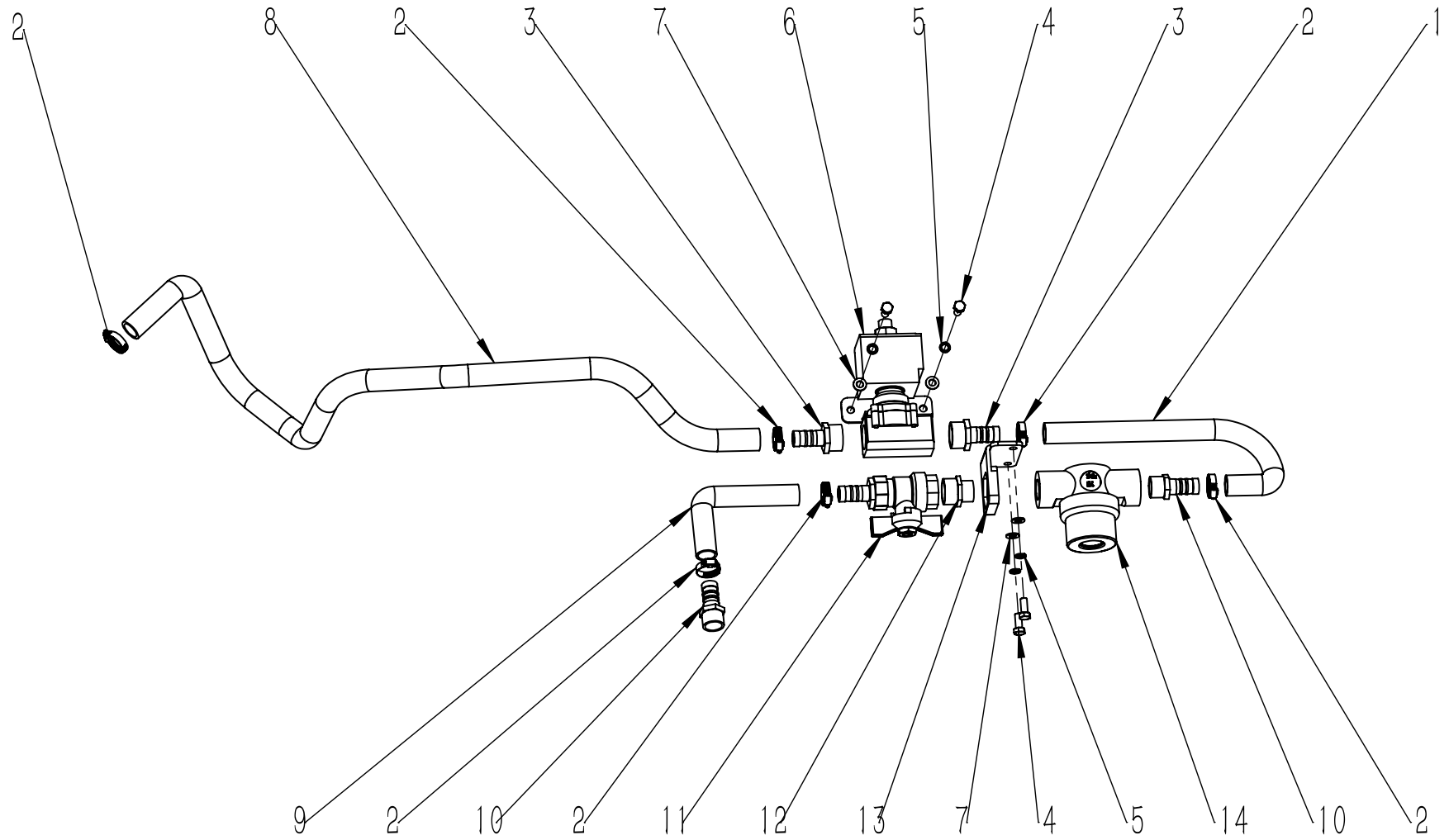


项目号 ITEM	零件号 P/N	数量 QTY	名称	DESCRIPTION
32	N110004	1	万向轮 D100	UNIVERSAL WHEEL Φ 100
33	N010014	2	圆头方径螺栓-M8x25-镀锌	SCREW M8x25 ZINC
34	N010027	2	外六角-M3x20-不锈钢	SCREW M3x20 A2
35	A030005	1	脚踏限位挡板 109x33	GUARD 109x33
36	N030019	4	平垫-3x7x0.5-不锈钢	WASHER 3x7x0.5 A2
37	W020259	1	防水微动开关组件	MICROSWITCH ASSEMBLY NORMALLY SWITCH OFF
38	N020045	2	自锁螺母-M3-不锈钢	LOCK NUT M3 A2
39	C030006	1	脚踏垫 98x80	RUBBER PAD 98x80
40	N040003	1	弹垫-M10-镀锌	LOCK WASHER M10 ZINC
41	N010060	1	外六角-M10x25-镀锌	SCREW M10x25 ZINC
42	A050007	1	脚踏板 740	PEDAL 740
43	B020004	1	铜套 8.3x15x18.5	BUSHING 8.3x15x18.5
44	N070001	4	轴承 6004	BEARING 6004
45	B060027	2	轴承垫圈 20x25x21	WASHER 20x25x21
46	B060028	2	垫圈 20x40x11	WASHER 20X40X11
47	C020004	2	驱动轮 D200x50	DRIVING WHEEL Φ 200x50
59	N010034	1	外六角-M8x20-ZINC	SCREW M8x20 ZINC

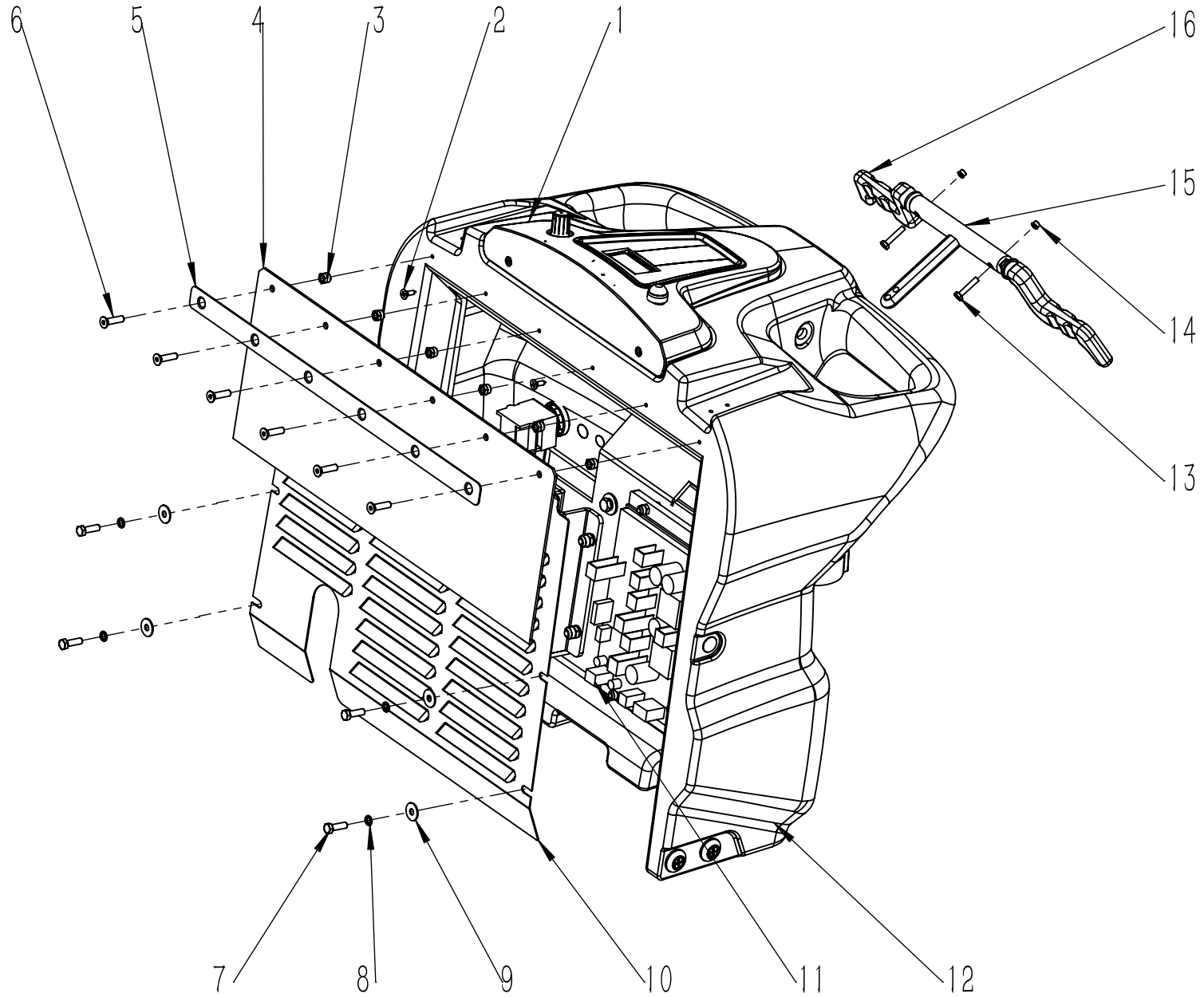


项目号 ITEM	零件号 P/N	数量 QTY	名称	DESCRIPTION
48	N020012	4	自锁螺母-M6-镀锌	LOCK NUT M6 ZINC
49	N010006	3	外六角-M6x20-镀锌	SCREW M6x20 ZINC
50	N020022	2	螺母-M6-镀锌	NUT M6 ZINC
51	A040014	1	机头下支架-272-T55	FRAME DOWN 272 T55
52	B060030	1	机头拉簧 2x15x60	SPRING 2x15x60
53	B020001	1	铜套 8x15x8.5	BUSHING 8x15x8.5
54	N010007	1	外六角-M8x25-镀锌	SCREW M8x25 ZINC
55	B070003	1	拉簧 2.8x20x93	SPRING 2.8x20x93
56	A030002	1	底座架-450x222-T55-70BT	FRAME 450x222 T55/70BT
57	A030004	1	连接板 55x40	PLAQUE 55x40
58	N010010	2	外六角-M8x50-镀锌	SCREW M8x50 ZINC

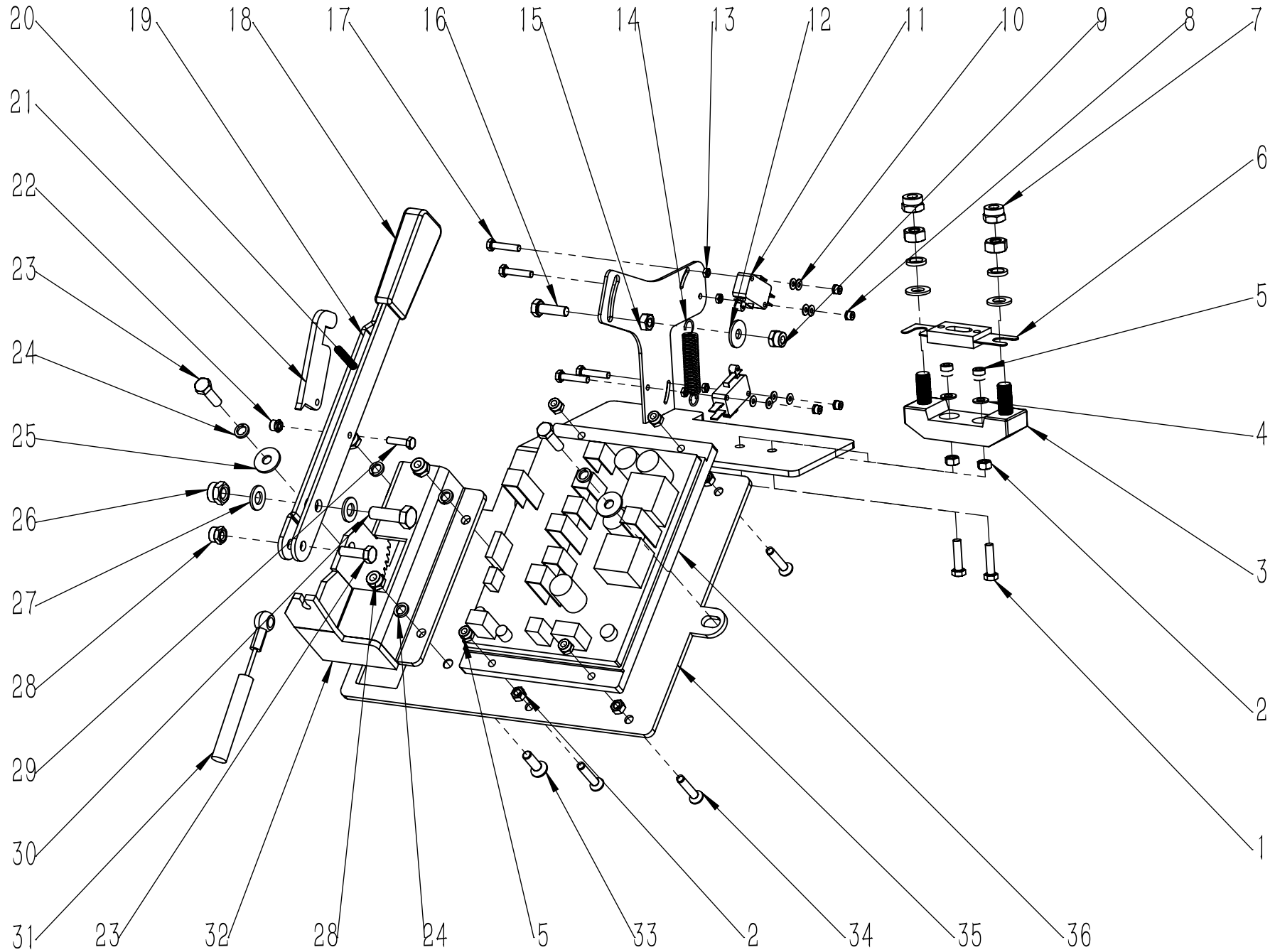




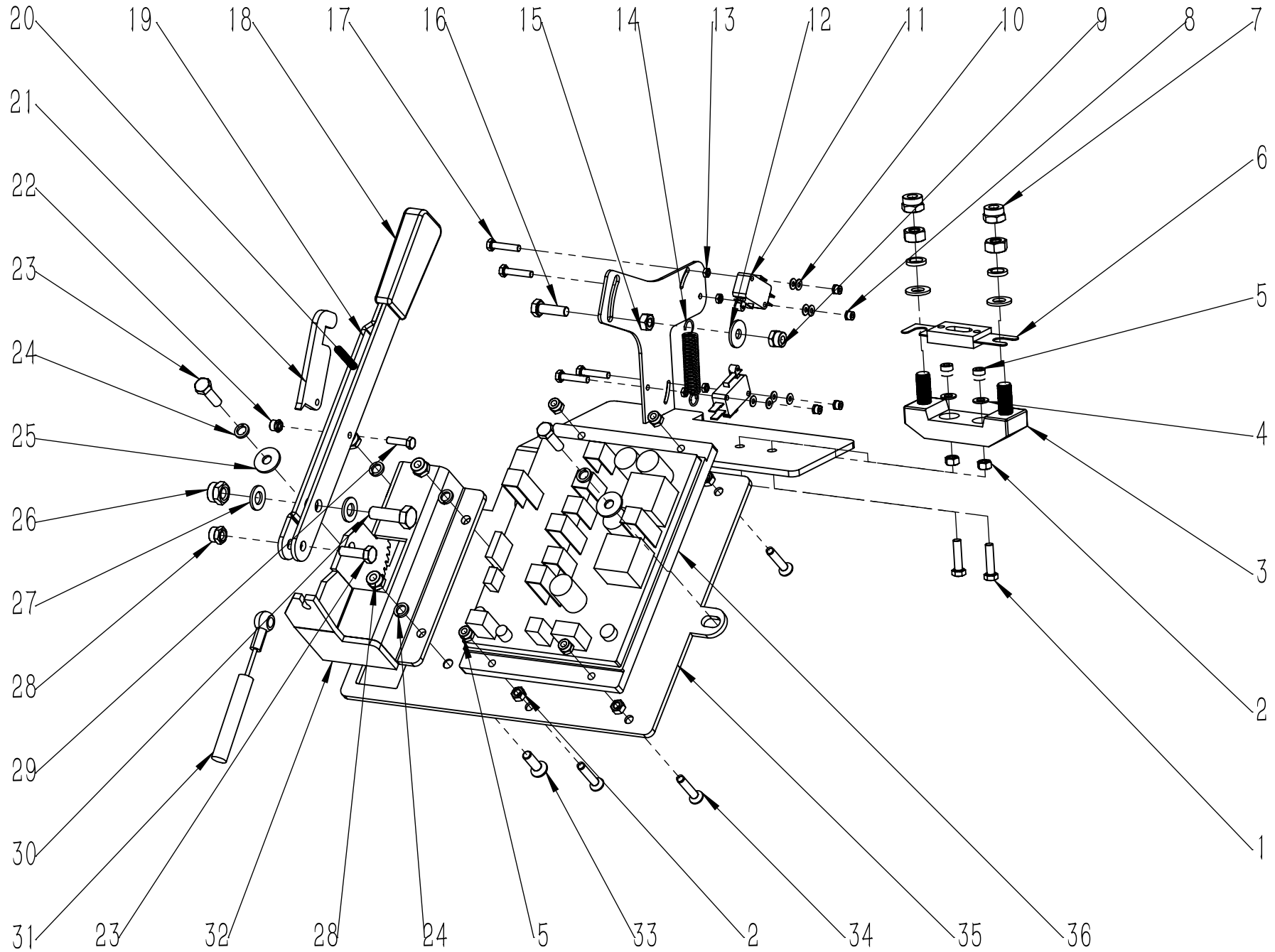
项目号 ITEM	零件号 P/N	数量 QTY	名称	DESCRIPTION
1	F050094.2	1	内嵌钢丝水管 D=18 D=13 L=250	PVC STEEL WIRE PIPE D=18 D=13 L=250
2	F050003	6	卡箍 Φ10-16	SCREW CLAMP Φ10-16
3	F020002	2	快速接头 1/2	CONNECTOR 1/2
4	N010208	4	外六角-M5x12-不锈钢	SCREW M5x12 A2
5	N040023	4	弹垫-M5-不锈钢	LOCK WASHER M5
6	W020256	1	电磁阀组件2-T55-70BT	SOLENOID VALVE ASSEMBLY T55/70BT
7	N030016	4	平垫 5x10x1 不锈钢	WASHER 5x10x1
8	F050094.3	1	内嵌钢丝水管 D=18 D=13 L=600	PVC STEEL WIRE PIPE D=18 D=13 L= 600
9	F050094.4	1	内嵌钢丝水管 D=18 D=13 L= 100	PVC STEEL WIRE PIPE D=18 D=13 L= 100
10	F020003	2	快速接头 3/8 D=12 d=10	CONNECTOR 3/8 D=12 d=10
11	F010006	1	蝶形球阀 1/2 直接头 D=10	BALL VALVE 1/2 CONNECTION STRAIGHT D=10
12	F020019	1	外丝接头 1/2-3/8 不锈钢	CONNECTOR 1/2-3/8 A2
13	A030034	1	球阀支架 35x43	SUPPORT 35x43
14	F010004	1	过滤器 3/8	FILTER 3/8



项目号 ITEM	零件号 P/N	数量 QTY	名称	DESCRIPTION
1	W010006	1	控制面板组件-T55BT-70BT	CONTROL PANEL ASSEMBLY T55BT/70BT
2	N010111	2	沉头十字自攻-3.5x13-不锈钢	SELF TAPPING SCREW 3.5x13 A2
3	N020016	6	自锁螺母-M5-镀锌	LOCK NUT M5 ZINC
4	B050027	1	手柄盒挡板 T70	BAFFLE T70
5	A060004	1	手柄盒橡胶压条 400x20	LAYERING 400x20
6	N010118	6	沉头内六角 M5X20-镀锌	SCREW M5x20 ZINC
7	N010029	4	外六角-M5x16-不锈钢	SCREW M5x16 A2
8	N040023	4	弹垫-M5-不锈钢	LOCK WASHER M5
9	N300040	4	平垫-5x15x1-不锈钢	WASHER 5*15*1 A2
10	C020007	1	手柄盒盖板 T55	SUPPORT COVER T55
11	W010155	1	电路板支架组件 T55BT	CIRCUIT BOARD SUPPORT ASEMBLY T55BT
12	C010004	1	手柄盒	HANDLE BAR
13	N010027	2	外六角-M3x20-不锈钢	SCREW M3x20 A2
14	N020045	2	自锁螺母-M3-不锈钢	LOCK NUT M3 A2
15	C020017	1	操控连接杆	ROCKER ARM
16	C020015	2	右操控把手	RIGHT LEVER

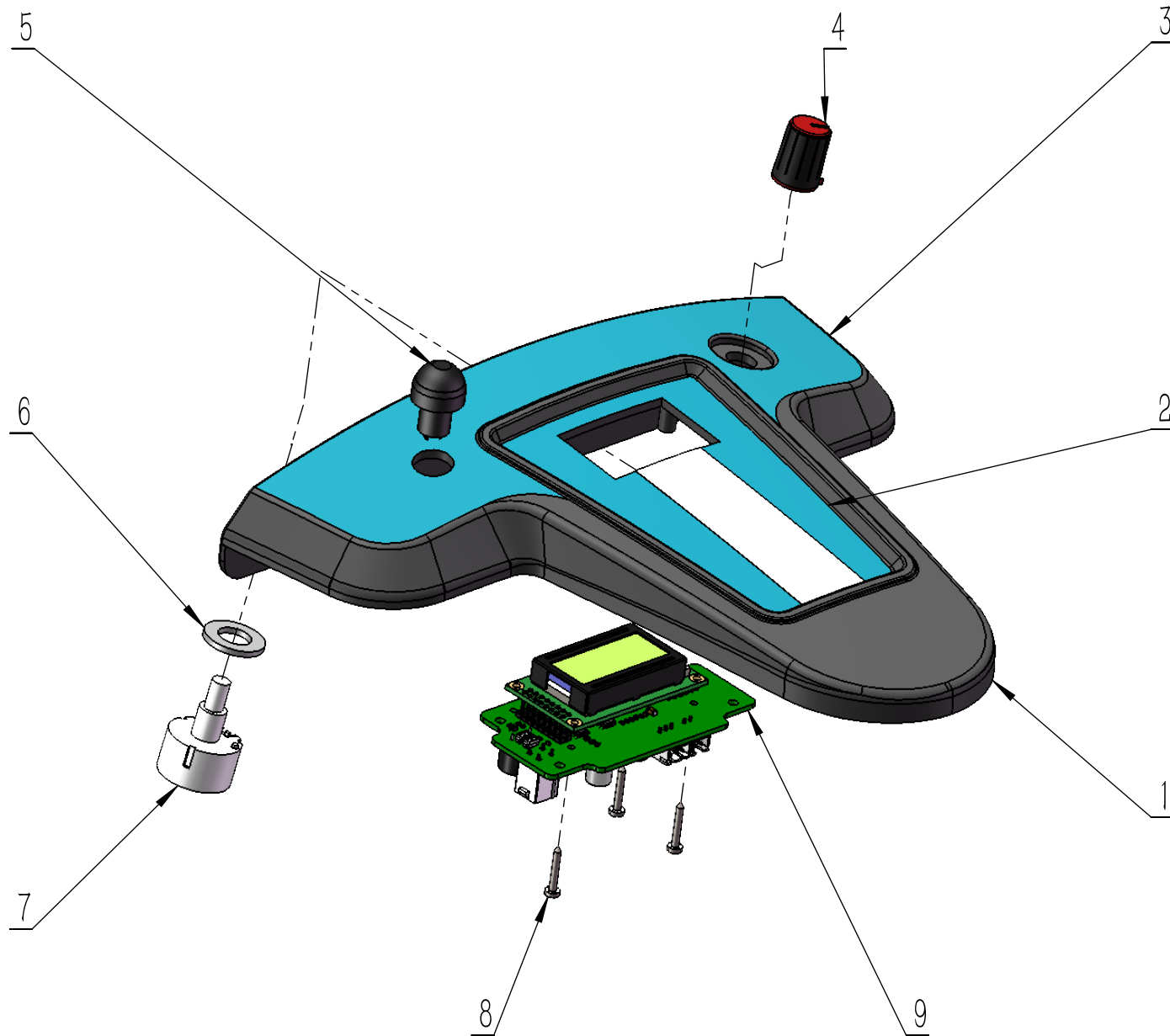


项目号 ITEM	零件号 P/N	数量 QTY	名称	DESCRIPTION
1	N010135	2	外六角-M5x20-不锈钢	SCREW M5x20 A2
2	N020046	6	螺母-M5-不锈钢	NUT M5 A2
3	E050004	1	保险座 80A	FUSE HOLDER 80A
4	N030016	2	平垫-5x10x1-不锈钢	WASHER 5x10x1
5	N020037	6	自锁螺母-M5-不锈钢	LOCK NUT M5 A2
6	E050005	1	保险 80A	FUSE 80A
7	N020024	2	自锁螺母-M8-不锈钢	LOCK NUT M8 A2
8	N020045	4	自锁螺母-M3-不锈钢	LOCK NUT M3 A2
9	N020006	1	自锁螺母-M6-不锈钢	LOCK NUT M6 A2
10	N030019	8	平垫-3x7x0.5-不锈钢	WASHER 3x7x0.5 A2
11	W020262	2	防水微动开关组件-250V-16A-常开	MICROSWITCH ASSEMBLY NORMALLY SWITCH ON
12	N030022	1	平垫-6x18x1.6-不锈钢	WASHER 6x18x1.6 A2
13	N020044	4	螺母-M3-不锈钢	NUT M3 A2
14	B070011	1	弹簧 0.8x10x55	SPRING 0.8x10x55
15	N020005	1	螺母-M6-不锈钢	NUT M6 A2
16	N010013	1	外六角-M6x20-不锈钢	SCREW M6x20 A2
17	N010027	4	外六角-M3x20-不锈钢	SCREW M3x20 A2
18	N090003	1	刹车手柄胶套 20x60	RUBBER SLEEVE 20x60
19	A020003	1	刹车手柄 240x20	BRAKE HANDLE 240x20
20	B060032	1	刹车压簧 0.5x5x25	SPRING 0.5x5x25
21	A050008	1	刹车锁 D4	BRAKE LOCK Φ4
22	N020042	1	自锁螺母-M4-不锈钢	LOCK NUT M4 A2
23	N010006	4	外六角-M6x20-镀锌	SCREW M6x20 ZINC
24	N040001	6	弹垫-M6-镀锌	LOCK WASHER M6 ZINC
25	N030008	3	平垫-6x18x1.6-镀锌	WASHER 6x18x1.6 ZINC
26	N020001	1	自锁螺母-M8-镀锌	LOCK NUT M8 ZINC
27	N030006	2	平垫-8x16x1.6-镀锌	WASHER 8x16x1.6 ZINC
28	N020012	4	自锁螺母-M6-镀锌	LOCK NUT M6 ZINC
29	N010028	1	外六角-M4x16-不锈钢	SCREW M4x16 A2
30	N010007	1	外六角-M8x25-镀锌	SCREW M8x25 ZINC

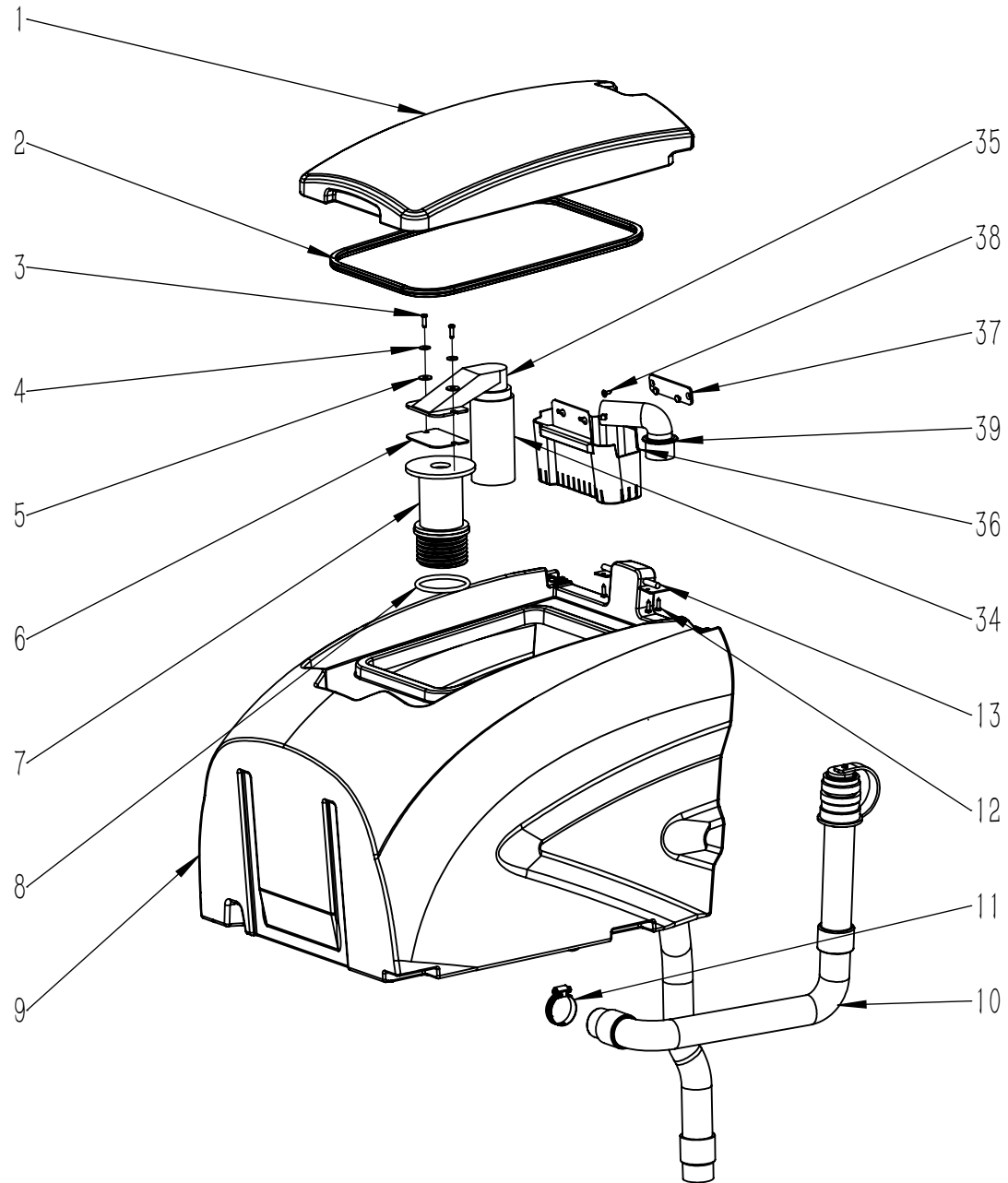


项目号 ITEM	零件号 P/N	数量 QTY	名称	DESCRIPTION
31	B060029	1	刹车线 L=980	CABLE L=980
32	A020004	1	刹车手柄支架 130x57.5	SUPPORT 130x57.5
33	N010016	3	沉头内六角-M6x20-不锈钢	SCREW M6x20 A2
34	N010066	4	沉头内六角-M5x25-不锈钢	SCREW M5x25 A2
35	A020046	1	电路板支架 KDS	CIRCUIT BOARD SUPPORT KDS
36	W020408	1	控制器组件-KDS-T55BT/70BT	CONTROLLER ASSEMBLY KDS T55BT/70BT

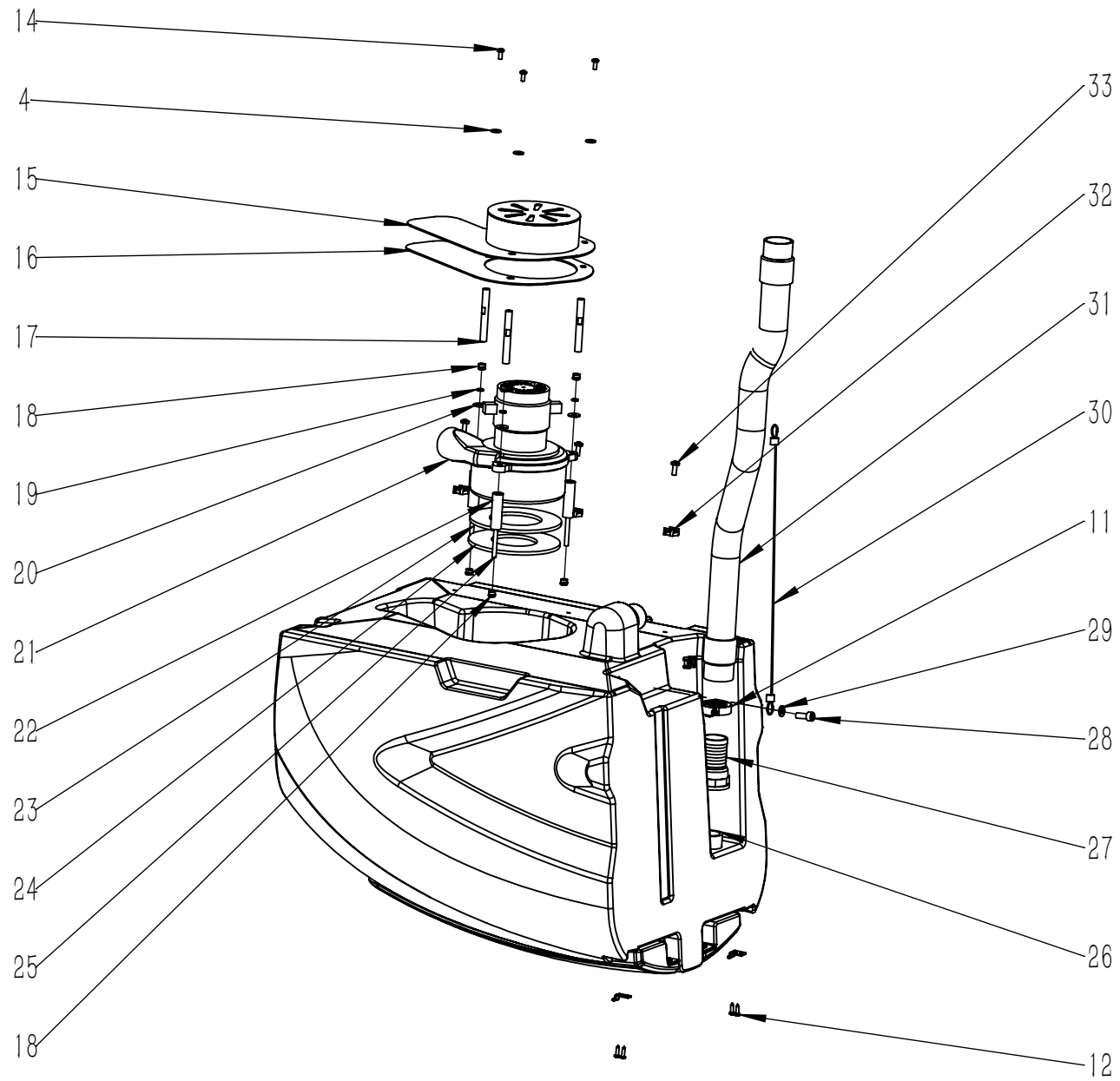




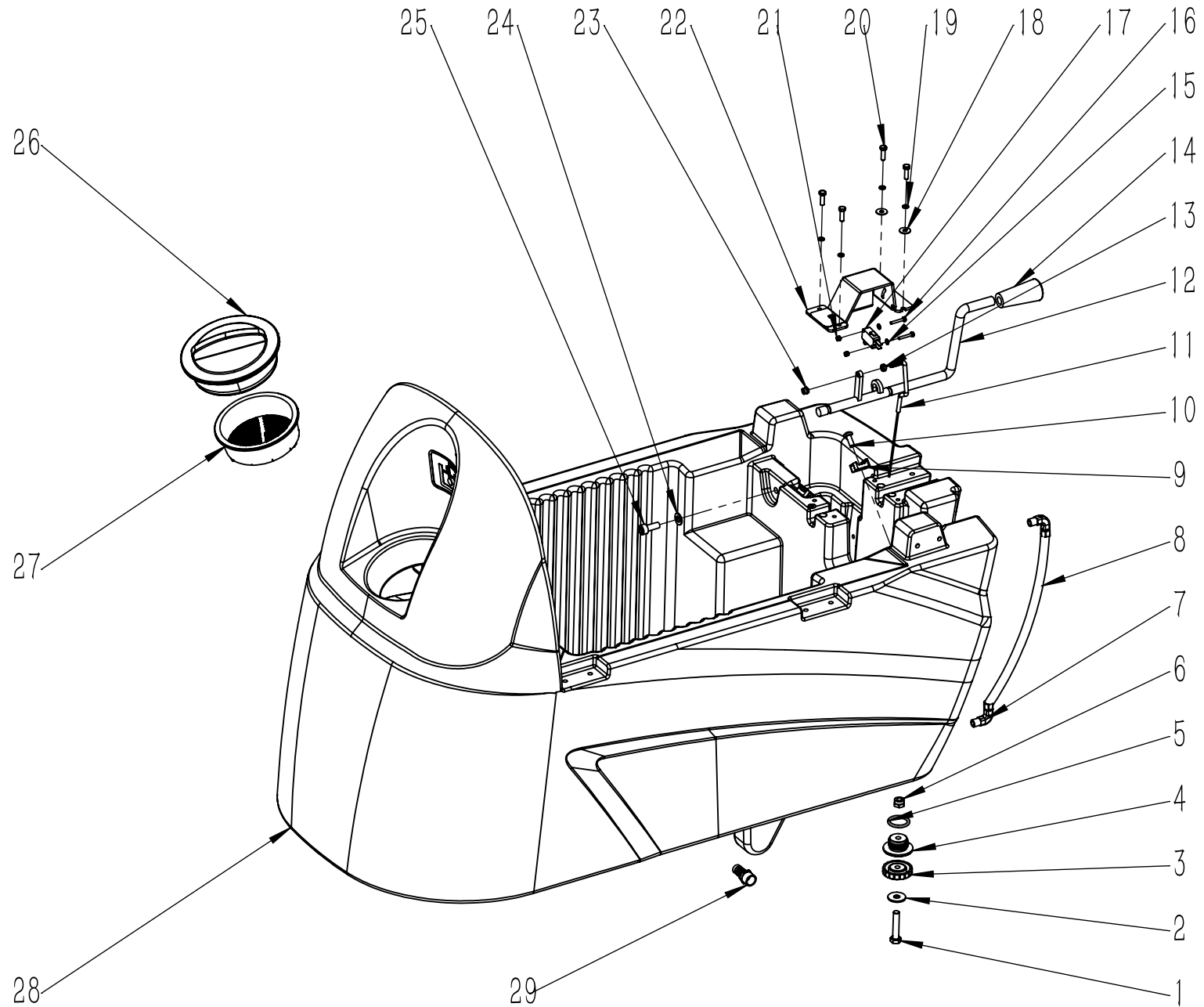
项目号 ITEM	零件号 P/N	数量 QTY	名称	DESCRIPTION
1	C020013	1	控制面板-T55-T70	CONTROL PANEL T55/70
2	C040002	1	控制面板标签 T55	CONTROL PANEL LABEL T55
3	C040011	1	控制面板标签 T55B	CONTROL PANEL LABEL T55B
4	E020009	1	调速开关旋帽	TURN CAP
5	W020258	1	选择按钮组件	BUTTON
6	N030004	1	平垫-10x20x2-镀锌	WAHSE 10x20x2 ZINC
7	W020264	1	调速开关组件	SPEED SWITCH ASSEMBLY
8	N010228	3	十字盘头自攻螺钉-ST2.2x16-不锈钢	SELF TAPPING SCREW ST2.2x16 A2
9	W020446	1	控制面板组件-KDS-T55BT-TVX	CONTROL PANEL ASSEMBLY KDS T55BT TVX



项目号 ITEM	零件号 P/N	数量 QTY	名称	DESCRIPTION
1	C010003	1	污水箱盖板	RECOVERY TANK COVER
2	N090010.1	1	污水箱上盖密封条 L=1280	RUBBER SEAL STRIP L=1280
3	N010251	2	十字盘头自攻螺钉-ST4.8x16-不锈钢	SCREW ST4.8x16 A2
4	N030040	5	平垫-5x15x1.2-不锈钢	WASHER 5x15x1.2
5	N030022	2	平垫-6x18x1.6-不锈钢	WASHER 6x18x1.6 A2
6	C030040	1	吸水口密封垫 T35	SUCTION GASKET T35
7	C020283	1	浮球安装座	FLOAT MOUNT
8	N090042	1	O 型密封圈 内径 D67x 线径 D6	O RING $\Phi$ 67x $\Phi$ 6
9	C010006	1	污水箱 55L	RECOVERY TANK 55L
10	F060001	1	排污管 D38x1040	DRAINAGE PIPE D38x1040
11	F050006	2	卡箍 D33-57	SCREW CLAMP $\Phi$ 33-57
12	N010052	8	圆头十字自攻螺丝-M4.2x16-不锈钢	SELF TAPPING SCREW M4.2x16 A2
13	A010001	2	箱盖固定板 34x30	PLAQUE 34x30
34	F040010	1	吸水口浮球 T35	SEWAGE TANK FLOAT FILTER
35	C020049	1	吸水口主体 T35	SUCTION BODY T35
36	C020087	1	一级过滤器 T130	PRIMARY FILTER T130
37	A040107	1	过滤篮固定座	FILTER BASKET HOLDER
38	N010097	2	沉头十字自攻螺栓-M4.2x13-不锈钢	SELF TAPPING SCREW M4.2x13 A2
39	C020008	1	污水进水口弯头 D.38	CONNECTOR BEND D.38

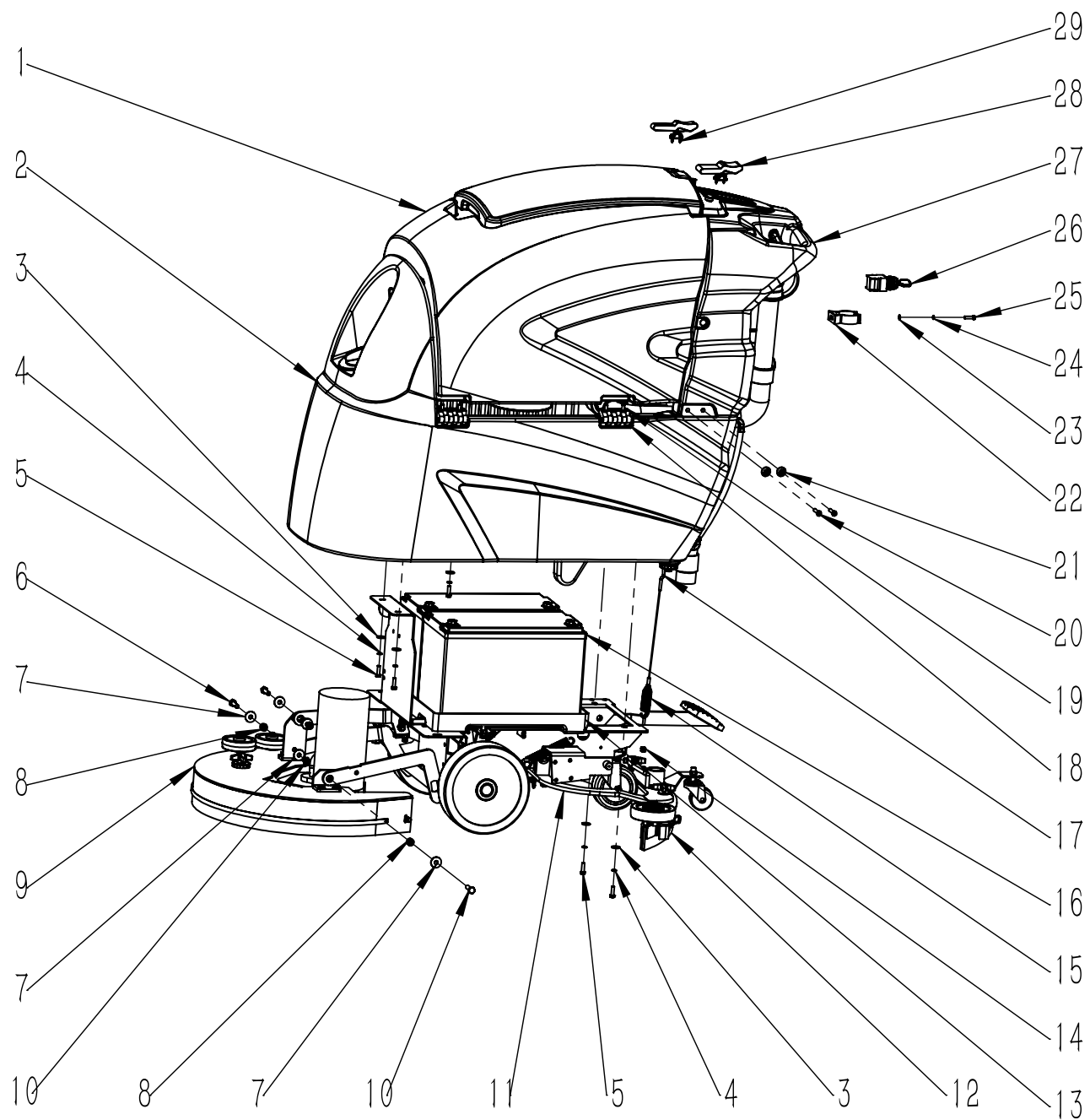


项目号 ITEM	零件号 P/N	数量 QTY	名称	DESCRIPTION
14	N010112	3	盘头十字-M5x16-不锈钢	SCREW M5x16 A2
15	A040083	1	消音盖板 T55	MUFFLER COVER T55
16	C020105	1	消音棉 T55	SOUNDPROOF COTTON T45
17	B020035	3	铜螺柱 L=82	COPPER STUD L=82
18	N020012	6	自锁螺母-M6-镀锌	LOCK NUT M6 ZINC
19	N040001	3	弹垫-M6-镀锌	LOCK WASHER M6 ZINC
20	N030008	3	平垫-6x18x1.6-镀锌	WASHER 6x18x1.6 ZINC
21	W020252	1	吸水电机组件-24V-390W-JH	VACUUM MOTOR ASSEMBLY 24V 390W JH
22	B050029	3	支撑套管 55	SLEEVING 55
23	F040005	1	3M 背胶 Φ (140-70)	3M ADHESIVES GUM φ (140-70)
24	F040001	1	吸水电机消音垫 D140x5	SPONGE Φ 140x5
25	N100008	3	螺杆 M6×100	SCREW M6x100mm
26	C020008	1	污水进水口弯头 D.38	CONNECTOR BEND D.38
27	C020009	1	污水进水口直接头 D.38	CONNECTOR STRAIGHT D.38
28	N010040	1	内六角圆柱头螺栓-M8x20-不锈钢	SCREW M8x20 A2
29	N030010	1	平垫-8x16x1.6-不锈钢	WASHER 8x16x1.6 A2
30	B060031	1	污水箱拉线 L=445	CABLE L=445
31	F060002	1	吸污管 D.38x1250	SUCTION HOSE D.38x1250
32	N090002	4	扎带固定座 23x16	SUPPORT 23x1
33	N010073	4	圆头十字螺丝-M5x16-镀锌	SCREW M5x16 ZINC

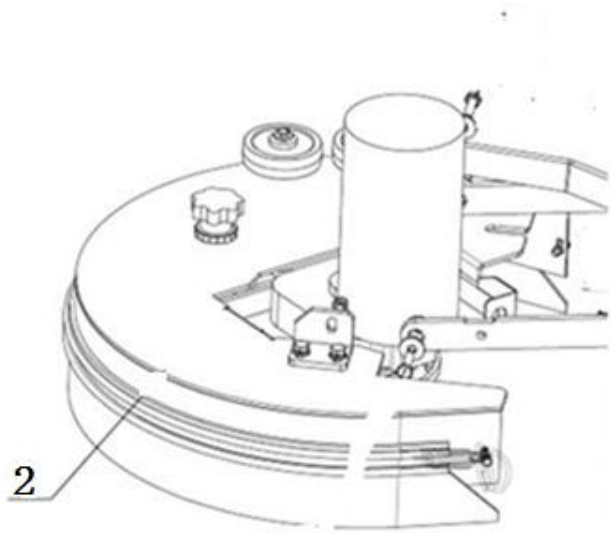


项目号 ITEM	零件号 P/N	数量 QTY	名称	DESCRIPTION
1	N010068	1	外六角 M8X40 不锈钢	SCREW M8x40 A2
2	N030028	1	平垫 8x24x2 不锈钢	WASHER 8x24x2 A2
3	N020009	1	花型螺母 M8	NUT M8
4	B020006	1	堵头 3/4 英寸	PLUG 3/4"
5	N090079	1	O 型密封圈 $\Phi 34$ (外径) $\times \Phi 5$ (线径)	O RING $\Phi 34 \times \Phi 5$
6	N020024	1	自锁螺母 M8 不锈钢	LOCK NUT M8 A2
7	F020021	2	水位显示管安装头 M10	LIQUID LEVEL DISPLAY TUBE MOUNTING HEAD M10
8	F050032.2	1	PU管 D=8 d=6 L=270	PU WATER PIPE D=8 d=6 =270
9	N090002	2	扎带固定座 23x16	SUPPORT 23x16
10	N010073	2	圆头十字螺丝 M5x16 镀锌	SCREW M5x16 ZINC
11	B060034	1	扒头拉线 L=245	CABLE L=245
12	A050020	1	提升摇臂 T55	LEVER T55
13	N020014	1	螺母-M5-镀锌	NUT M5 ZINC
14	N100007	1	提升摇臂把手 M12	HANDLE M12
15	N030019	4	平垫-3x7x0.5-不锈钢	WASHER 3x7x0.5 A2
16	N010027	2	外六角-M3x20-不锈钢	SCREW M3x20 A2
17	W020259	1	防水微动开关组件	MICROSWITCH ASSEMBLY NORMALLY SWITCH OFF
18	N030013	2	平垫-5x15x1.2-镀锌	WASHER 5x15x1.2 ZINC
19	N040007	4	弹垫-M5-镀锌	LOCK WASHER M5 ZINC
20	N010025	4	外六角-M5x16-镀锌	SCREW M5x16 ZINC
21	N020045	2	自锁螺母-M3-不锈钢	LOCK NUT M3 A2
22	A050021	1	提升开关支架 T55	SUPPORT T55
23	N020016	1	自锁螺母-M5-镀锌	LOCK NUT M5 ZINC
24	N030010	1	平垫-8x16x1.6-不锈钢	WASHER 8x16x1.6 A2
25	N010040	1	内六角圆柱头螺栓-M8x20-不锈钢	SCREW M8x20 A2
26	C020005	1	清水箱注水口盖子 D115	THREADED COVER $\Phi 115$
27	C020006	1	清水箱注水口滤网 D110	FILTER $\Phi 110$
28	C010005	1	清水箱 55L	SOLUTION TANK 55L
29	F020003	1	快速接头-3/8-D=12-d=10	CONNECTOR 3/8 D=12 d=10





项目号 ITEM	零件号 P/N	数量 QTY	名称	DESCRIPTION
1	W010016	1	污水箱组件 T55B	RECOVERY TANK ASSEMBLY T55B
2	C010005	1	清水箱 55L	SOLUTION TANK 55L
3	N030008	6	平垫-6x18x1.6-镀锌	WASHER 6x18x1.6 ZINC
4	N040001	6	弹垫-M6-镀锌	LOCK WASHER M6 ZINC
5	N010006	6	外六角-M6x20-镀锌	SCREW M6x20 ZINC
6	N010002	3	外六角-M8x30-镀锌	SCREW M8x30 ZINC
7	N030027	6	平垫-8x24x2-镀锌	WASHER 8x24x2 ZINC
8	B020001	3	铜套 8x15x8.5	BUSHING 8x15x8.5
9	W010060	1	机头组件 D518	NOSE ASSEMBLY D518
10	N020001	3	自锁螺母-M8-镀锌	LOCK NUT M8 ZINC
11	W010063	1	扒头支架组件-T55-T70	SQUEEGEE SUPPORT ASSEMBLY T55/T70
12	W010491	1	扒头组件-760新	SQUEEGEE ASSEMBLY 760 NEW
13	C020010	1	电池座 370x364x45	BATTERY BASE 370x364x45
14	N020012	1	自锁螺母 M6 镀锌	LOCK NUT M6 ZINC
15	B070017	1	单向拉簧 3x20x75.4	SPRING 3x20x75.4
16	E040006	2	电池 AGM-12V-100Ah-2-中文	BATTERY 12V 100Ah AGM
17	B060034	1	扒头拉线 L=245	CABLE L=245
18	C020011	3	合页 40x14	HINGE 40x14
19	N010017	12	沉头内六角-M6x25-发黑	SCREW M6x25
20	N010116	4	沉头十字-M6x35-不锈钢	SCREW M6x35 A2
21	C020028	4	异形垫片 D5	WASHER Φ5
22	C020014	1	管托 D43	SCREW CLAMP Φ43
23	N030016	1	平垫-5x10x1-不锈钢	WASHER 5x10x1
24	N040023	1	弹垫-M5-不锈钢	LOCK WASHER M5
25	N010029	1	外六角-M5x16-不锈钢	SCREW M5x16 A2
26	W020013	1	钥匙开关组件 双开	KEY SWITCH ASSEMBLY
27	W010067	1	手柄盒组件-T55-T70	HANDLE BOX ASESEMBLY T55/T70
28	N090004	2	橡胶搭扣 50	RUBBER HASP 50
29	N010052	4	圆头十字自攻螺丝-M4.2x16-不锈钢	SELF TAPPING SCREW M4.2x16 A2



5



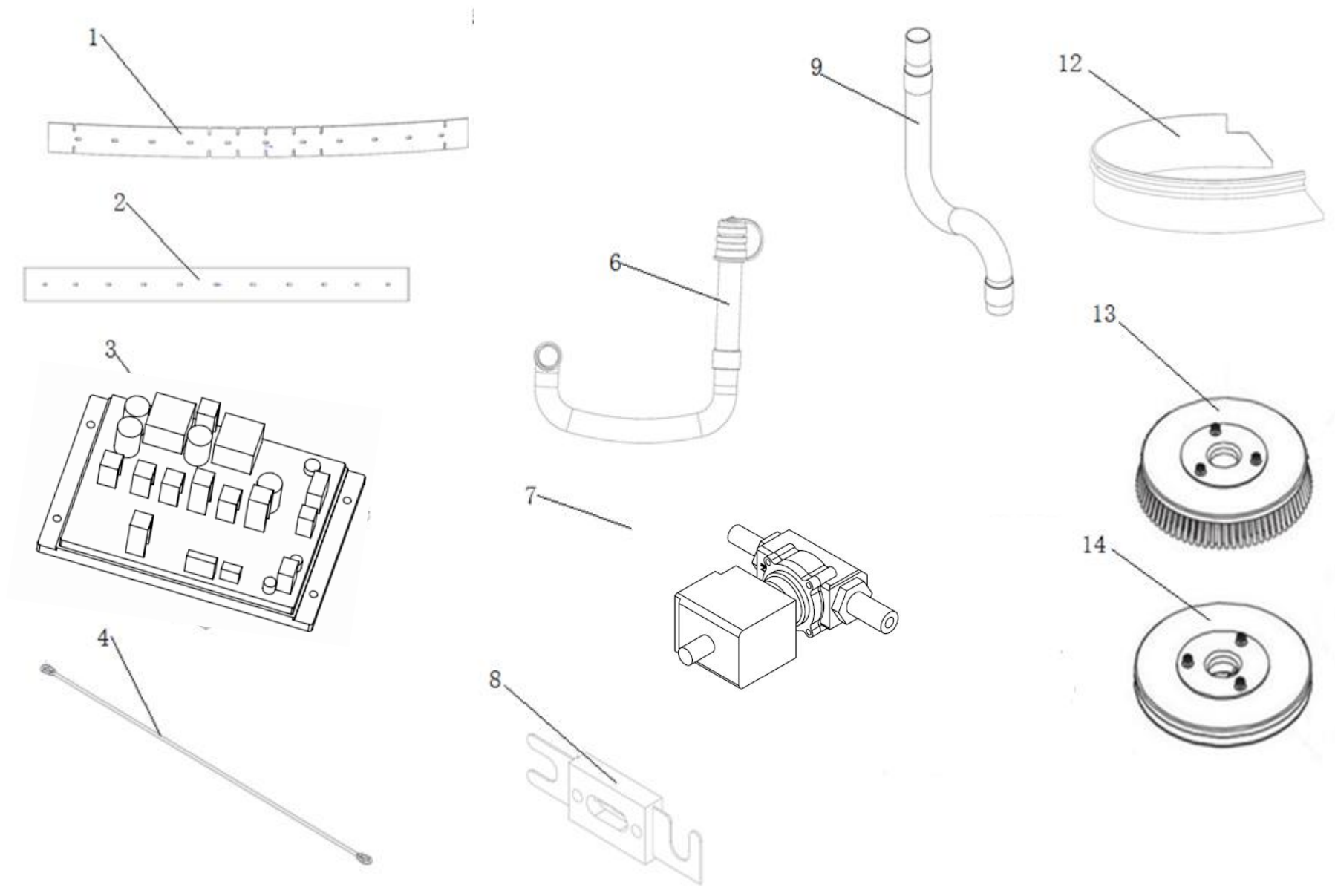
3



4



项目号 ITEM	零件号 P/N	数量 QTY	名称	DESCRIPTION
1	W010078	1	包装组件 1 T55	PACKAGING ASSEMBLY 1 T55
2	C030007	1	刷盘防溅条 85x1190	RUBBER SKIRT 85x1190
3	C040003	1	机器左侧标签 T45/T55/T70	LEFT LABEL T45/T55/T70
4	C040004	1	机器右侧标签 T45/T55/T70	RIGHT LABEL T45/T55/T70
5	C040005	1	标识标签 T55	DECAL T55
6	C040025	1	提升摇臂标识	LEVER LABEL
7	C040026	1	刹车标识	BRAKE LABEL
8	M010015	1	塑料包装袋 1400x700x1000	PLASTIC BAG 1400x700x1000
9	M020002	1	木托盘 T55 1360x620x120	WOODEN PALLETS T55 1360x620x120
10	M020008	4	三角挡块 50x50x100	TRIANGULAR BLOCK 50x50x100
11	W010079	1	包装组件 2 T55	PACKAGING ASSEMBLY 2 T55
12	M010001	1	纸箱 T55 1360x620x1070	CARTON T55 1360x620x1070
13	M010002	1	纸箱上盖 T55 1380x660x100	CARTON COVER T55 1380x660x100
14	M010009	1	纸盒-820x200x120-扒头 760	760 SQUEEGEE CARTON BOX 820x200x120
15	M010014	1	说明书自封袋 340x240mm	ZIPLOCK 340x240mm
16	M020006	4	木条 T55 40X40X1050	BATTEN 55/70L 40X40X1050
17	M020007	12	支撑护角 50x50x100	SUPPORTING CORNER
18	P010004	1	保修卡	WARRANTY CARD
19	P010012	1	测试报告	TEST REPORT



项目号 ITEM	零件号 P/N	名称	数量 QTY	DESCRIPTION
1	C030014LTX		1	FRONT SQUEEGE BLADE RUBBER LINATEX 3x50x785
2	C030015LTX		1	REAR SQUEEGE BLADE RUBBER LINATEX 4.5x53x835
3	C030014PU		1	FRONT SQUEEGE BLADE RUBBER PU 3x50x785
4	C030015PU		1	REAR SQUEEGE BLADE RUBBER PU 4.5x53x835
5	C030014PRI		1	FRONT SQUEEGE BLADE RUBBER PRIMOTHANE 3x50x785
6	C03005PRI		1	REAR SQUEEGE BLADE RUBBER PRIMOTHANE 4.5x53x835
7	N150045		1	19" LOCK WATER BRUSH PP0.5
8	N150001		1	19" BRUSH PP0.6
9	N150004		1	19" PAS HOLDER
10	N150006		1	19" BRUSH PP 0.28

