

— SCHEMATIC DRAWINGS —

装配示意图



驾驶式扫地机 TS1300 Pro

Auto Ride-On Sweeper TS1300 Pro

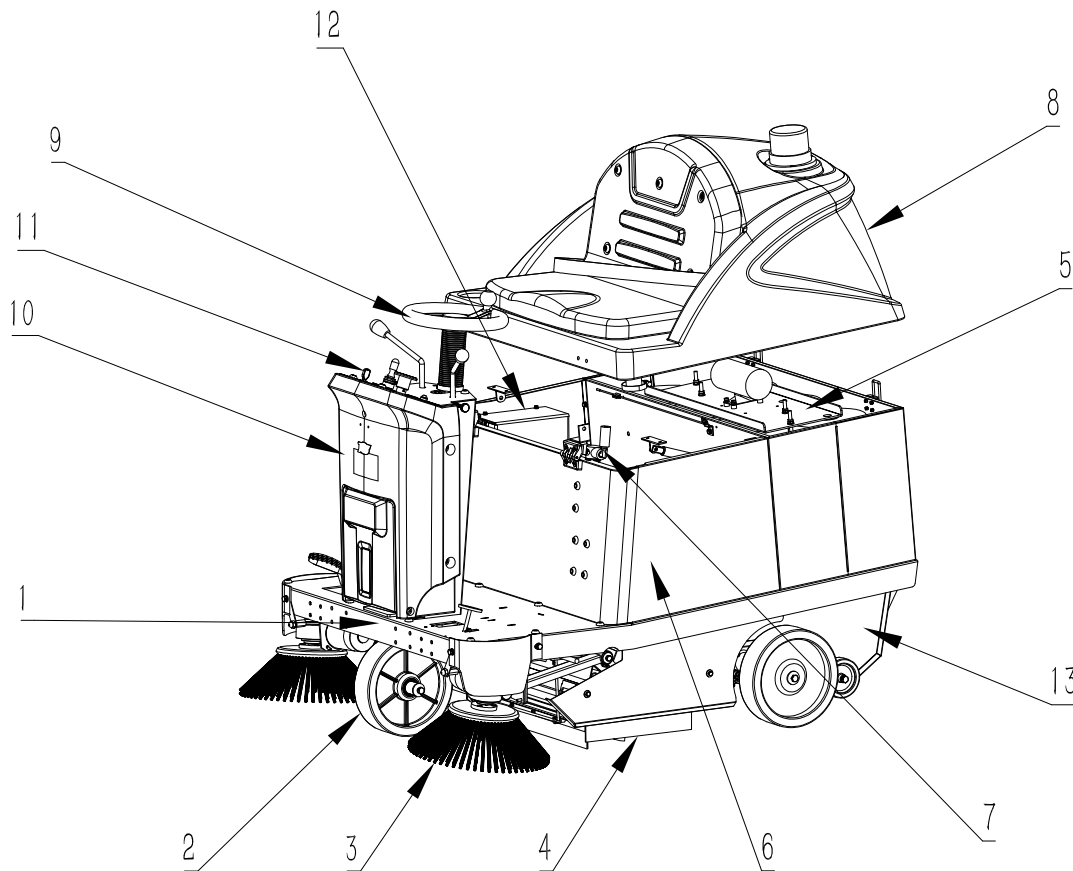
Issued in Oct 2023
Version: V09

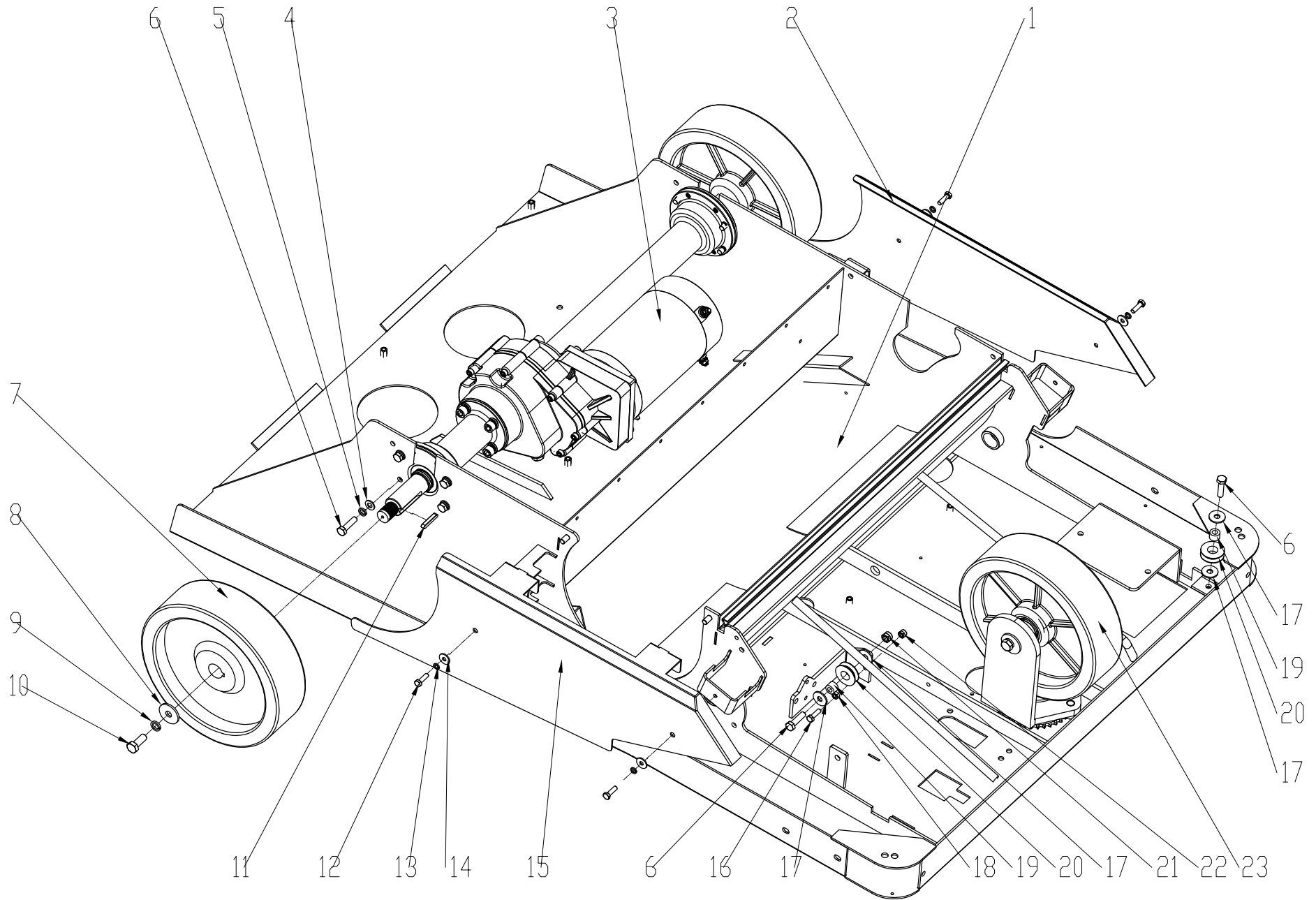


目 录

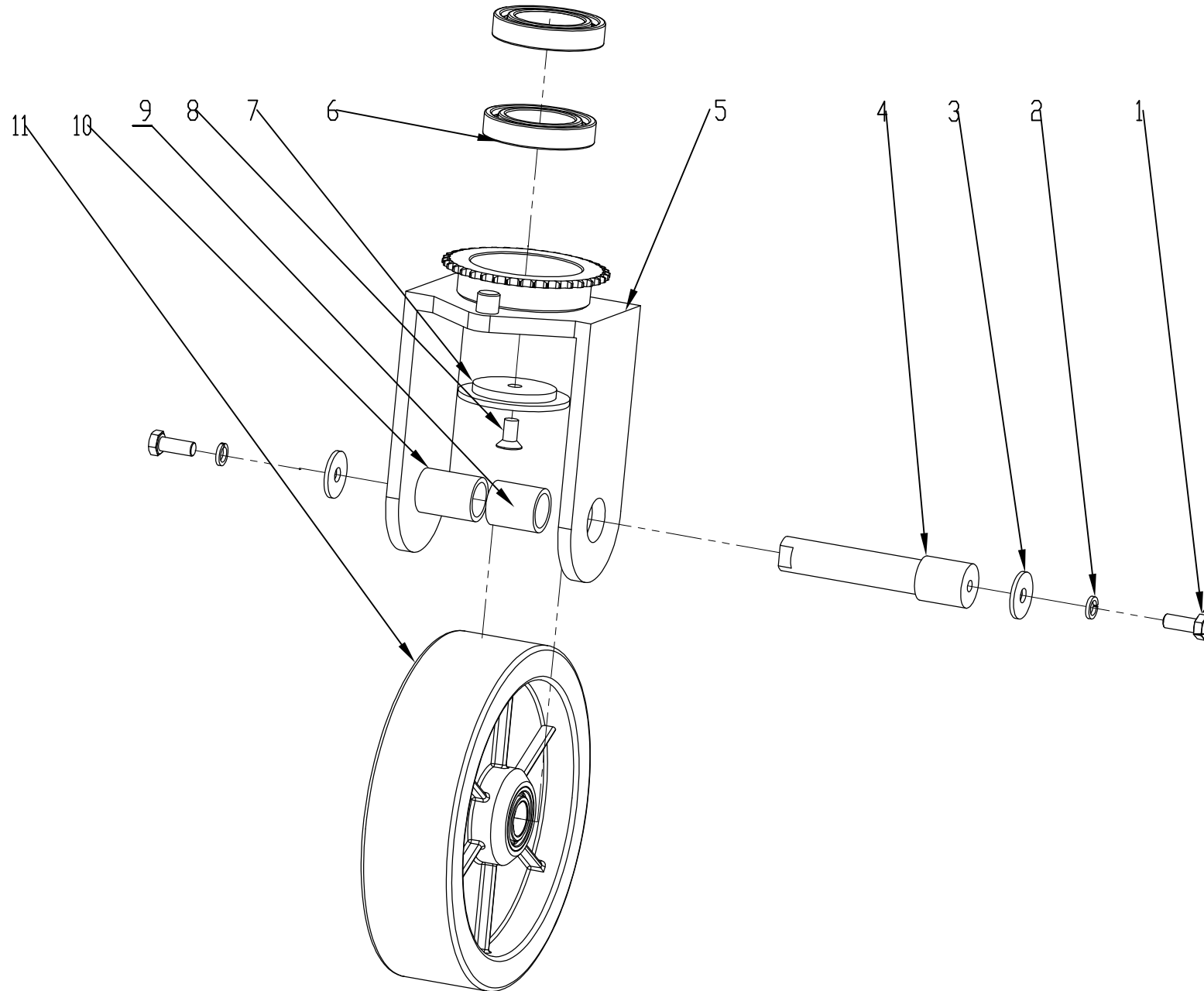
CONTENTS

1. 底座架组件.....	1—2
FRAME ASSEMBLY	
2. 行走组件.....	3—4
WHEELS ASSEMBLY	
3. 边刷和滚刷组件.....	5—10
BRUSHERS BASE ASSEMBLY	
4. 拂尘组件.....	11—12
DUST COLLECTING ASSEMBLY	
5. 机身组件.....	13—16
THE INTERNAL ASSEMBLY	
6. 罩壳组件.....	17—18
THE SHELL ASSEMBLY	
7. 水路组件.....	19—20
WATERWAY ASSEMBLY	
8. 清水箱组件.....	21—24
SLOTTED TANK ASSEMBLY	
9. 转向组件.....	25—26
DIVERSION ASSEMBLY	
10. 转向器外罩组件.....	27—28
STEERING GEAR HOUSING ASSEMBLY	
11. 控制面板组件.....	29—30
CONTROL PANEL ASSEMBLY	
12. 电器组件.....	31—32
CONTROLLER ASSEMBLY	
13. 集尘箱组件.....	33—34
DUST COLLECTOR ASSEMBLY	
14. 附件.....	35—36
ACCESSORIES	

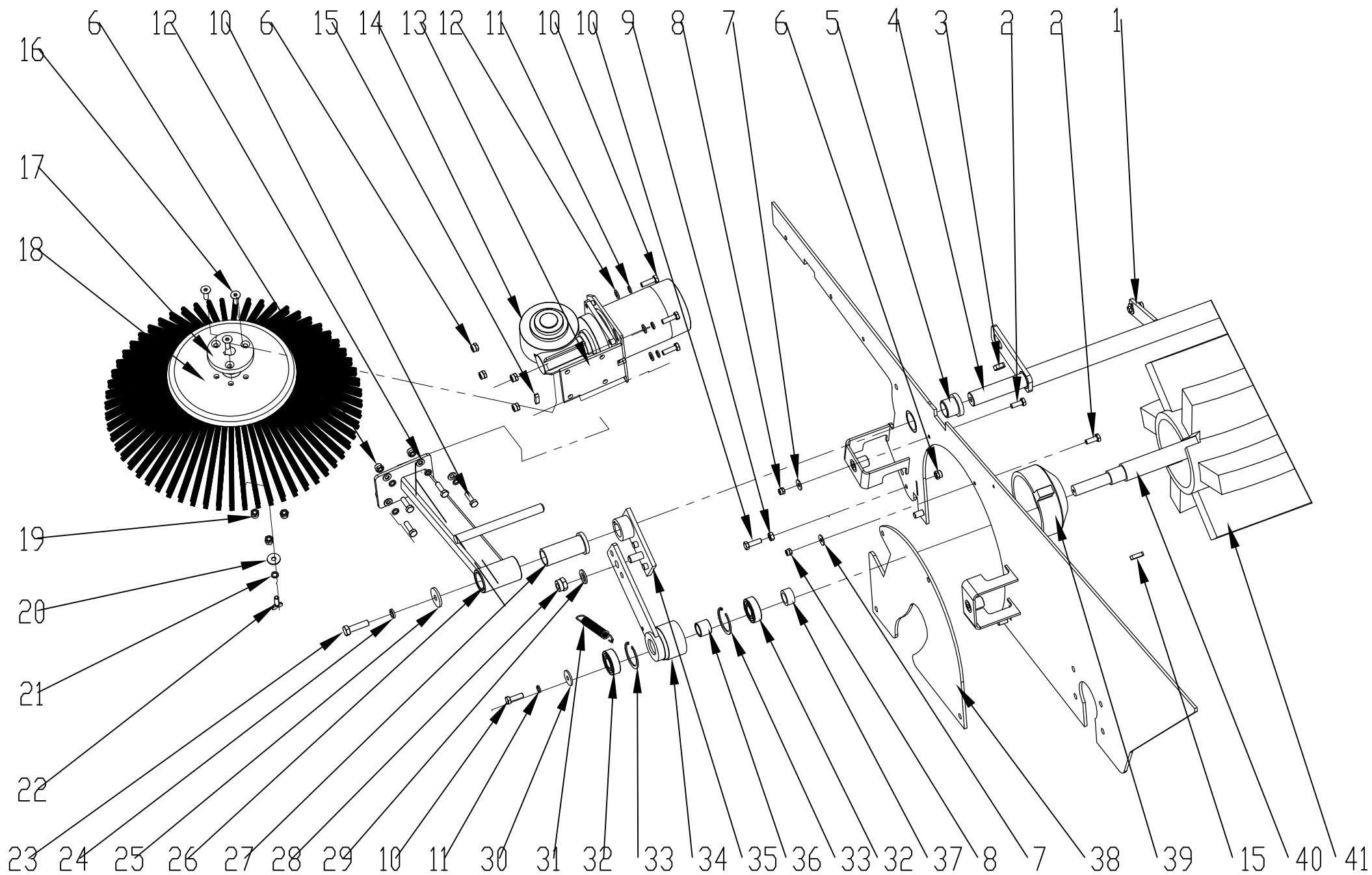




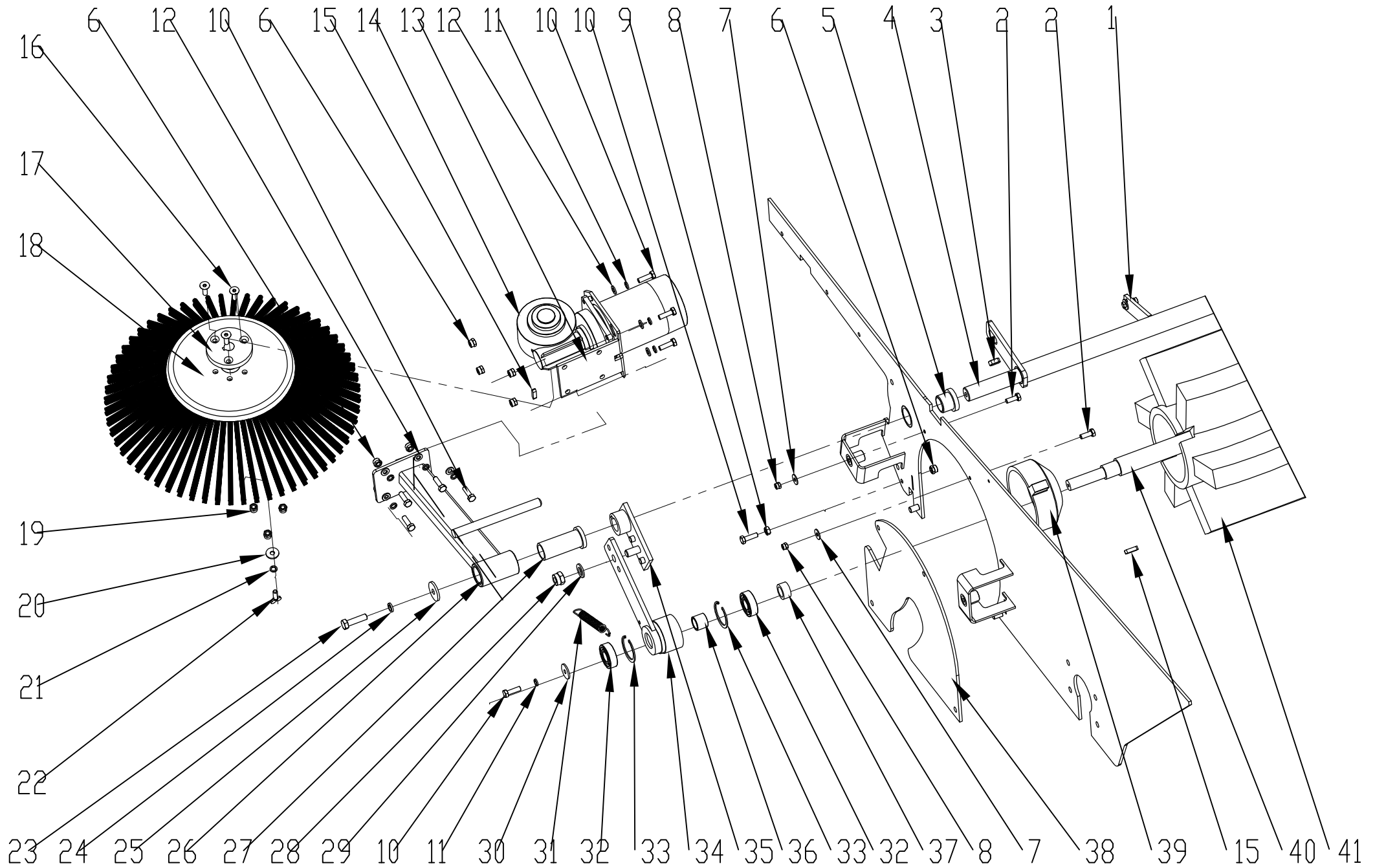
项目号 ITEM	零件号 P/N	名称	数量 QTY	DESCRIPTION
1	A010194	底座架	1	BASE FRAME
2	A010155	右盖板	1	RIGHT COVER
3	W020139	后桥电机 800W 小组件	1	DRIVE MOTOR 24V 800W
4	N030006	平垫 8x16x1.6 镀锌	8	WASHER 8X16X1.6 ZINC
5	N040013	弹垫 8 镀锌	8	LOCK WASHER M8 ZINC
6	N010002	外六角 M8x30 镀锌	10	SCREW M8X30 ZINC
7	N110039	后车轮	2	REAR WHEEL
8	N030075	平垫 $\Phi 10 \times \Phi 35 \times 5$	2	WASHER 10X35X5 ZINC
9	N040003	弹垫 10 镀锌	2	LOCK WASHER M10 ZINC
10	N010060	外六角 M10x25 镀锌	2	SCREW M10X25 ZINC
11	N060019	平键 5.8×5.8×34.5	2	KEY 5.8×5.8×34.5
12	N010013	外六角 M6x20 不锈钢	4	SCREW M6X20 A2
13	N040011	弹垫 6 不锈钢	4	LOCK WASHER M6 A2
14	N030022	大平垫 6x18x1.6 不锈钢	4	WASHER 6X18X1.6 A2
15	A010154	左盖板	1	LEFT COVER
16	N010006	外六角 M6x20 镀锌	2	SCREW M6X20 ZINC
17	N030027	大平垫 8x24x2 镀锌	4	WASHER 8X24X2 ZINC
18	N020022	螺母 M6 镀锌	2	NUT M6 ZINC
19	B020023	铜套 8 15 10.5	2	BUSHING 8×15×10.5
20	B010045	滑轮 $\Phi 35$	2	PULLEY $\Phi 35$
21	N020001	自锁螺母 M8 镀锌	2	LOCK NUT M8 ZINC
22	N020012	自锁螺母 M6 镀锌	1	LOCK NUT M6 ZINC
23	W010092	行走组件	1	WALK ASSEMBLY



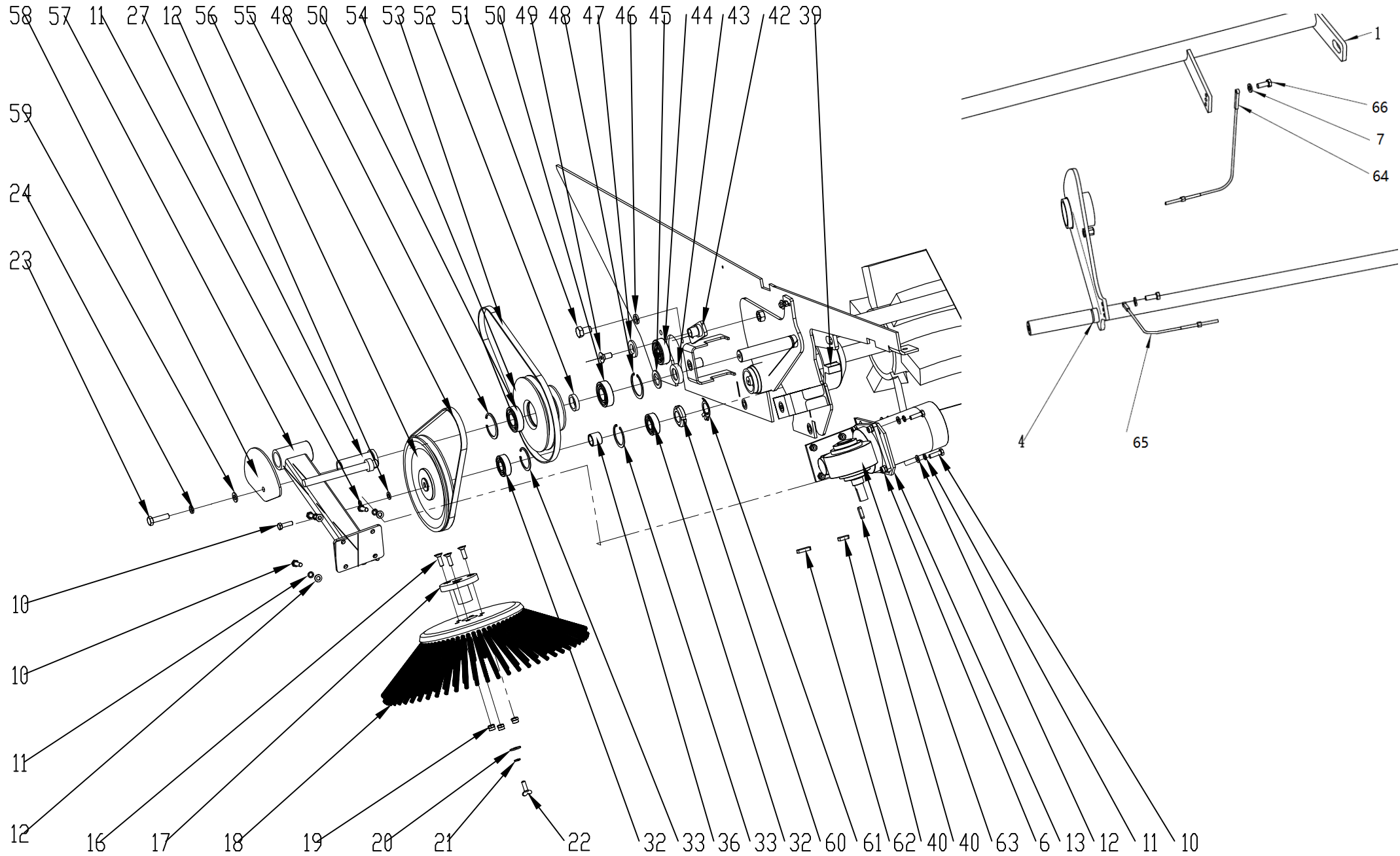
项目号 ITEM	零件号 P/N	名称	数量 QTY	DESCRIPTION
1	N010060	外六角 M10x25 镀锌	2	SCREW M10X25 ZINC
2	N040003	弹簧垫片 M10 镀锌	2	LOCK WASHER M10 ZINC
3	N030056	平垫 10X24X3 镀锌	2	WASHER 10X24X3 ZINC
4	B060137	方向轴	1	DIRECTIONAL AXIS
5	B060135	转向齿轮支架	1	STEERING GEAR BRACKET
6	N070006	6010 轴承	2	BEARING 6010
7	B010049-5	大齿轮轴盖板	1	COVER PLATE
8	N010174	沉头十字螺栓 M10x20 镀锌	1	COUNTERSUNK HEAD SCREW M10x20 ZINC
9	B010060	前轮轴套 25x32x37	1	AXLE SLEEVE 25x32x37
10	B060136	轴套 32x25x43	1	AXLE SLEEVE 32x25x43
11	N110038	前车轮	1	FRONT WHEEL



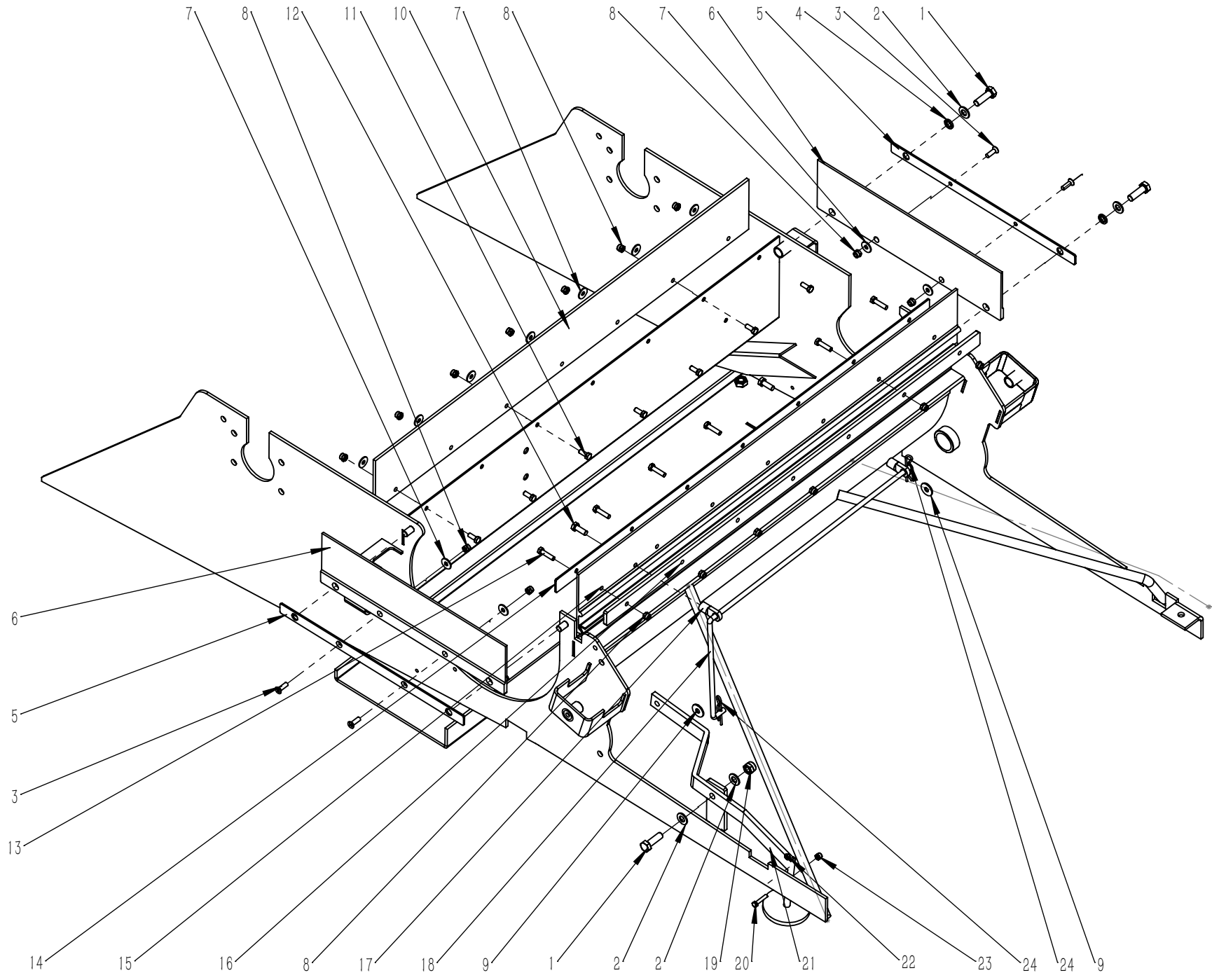
项目号 ITEM	零件号 P/N	名称	数量 QTY	DESCRIPTION
1	A040103	滚刷轴支撑架	1	ROLLING BRUSH-SHAFT SUPPORT
2	N010025	外六角-M5×16-镀锌	4	SCREW M5×16 ZINC
3	N060016	平键 6×6×16	1	FLAT KEY 6×6×16
4	B060177	滚刷轴 L=908	1	ROLLER BRUSH SHAFT
5	B050041	轴套 Φ20x20.5	2	SPACER 20×20.5
6	N020012	自锁螺母 M6 镀锌	17	LOCK NUT M6 ZINC
7	N030013	大平垫 5x15x1.2 镀锌	5	WASHER 5×15×1.2 ZINC
8	N020016	自锁螺母 M5 镀锌	3	LOCK NUT M5 ZINC
9	N020022	螺母 M6 镀锌	1	NUT M6 ZINC
10	N010006	外六角 M6x20 镀锌	19	SCREW M6×20 ZINC
11	N040001	弹垫 6 镀锌	18	LOCK WASHER M6 ZINC
12	N030007	平垫 6x12x1.6 镀锌	17	WASHER 6×12×1.6 ZINC
13	A020062	边刷电机安装板	2	SIDE BRUSH MOTOR MOUNTING PLATE
14	W020290	边刷电机组件-右24V-100W-TS1300	1	SIDE BRUSH MOTOR ASSEMBLY RIGHT 24V-100W
15	N060018	平键 4.8×4.8×19.5	2	KEY 4.8×4.8×19.5
16	N010016	内六角沉头螺钉 M6×20 不锈钢	6	COUNTERSUNK HEAD SCREW M6×20 A2
17	B050071	边刷连接法兰 TS1300PRO	2	SIDE BRUSH FLANGE
18	N150015	边刷	2	SIDE BRUSH
19	N020006	自锁螺母 M6 不锈钢	6	LOCK NUT M6 A2
20	N030022	大平垫 6x18x1.6 不锈钢	2	WASHER 6×18×1.6 A2
21	N040011	弹垫 6 不锈钢	2	LOCK WASHER M6 A2
22	N010204	蝶形螺栓-M6×12-镀锌	2	BUTTERFLY BOLT M6×12 ZINC
23	N010002	外六角 M8x30 镀锌	2	SCREW M8×30 ZINC
24	N040013	弹垫 8 镀锌	2	LOCK WASHER M8 ZINC
25	N030026	平垫 8×28×3 镀锌	1	WASHER 8×28×3 ZINC
26	A040104	右边刷支架 TS1300PRO	1	RIGHT SIDE BRUSH SUPPORT
27	B010033	轴套 ∅20x62.5	2	SPACER Φ20×62.5
28	N020002	自锁螺母 M10 镀锌	1	LOCK NUT M10 ZINC



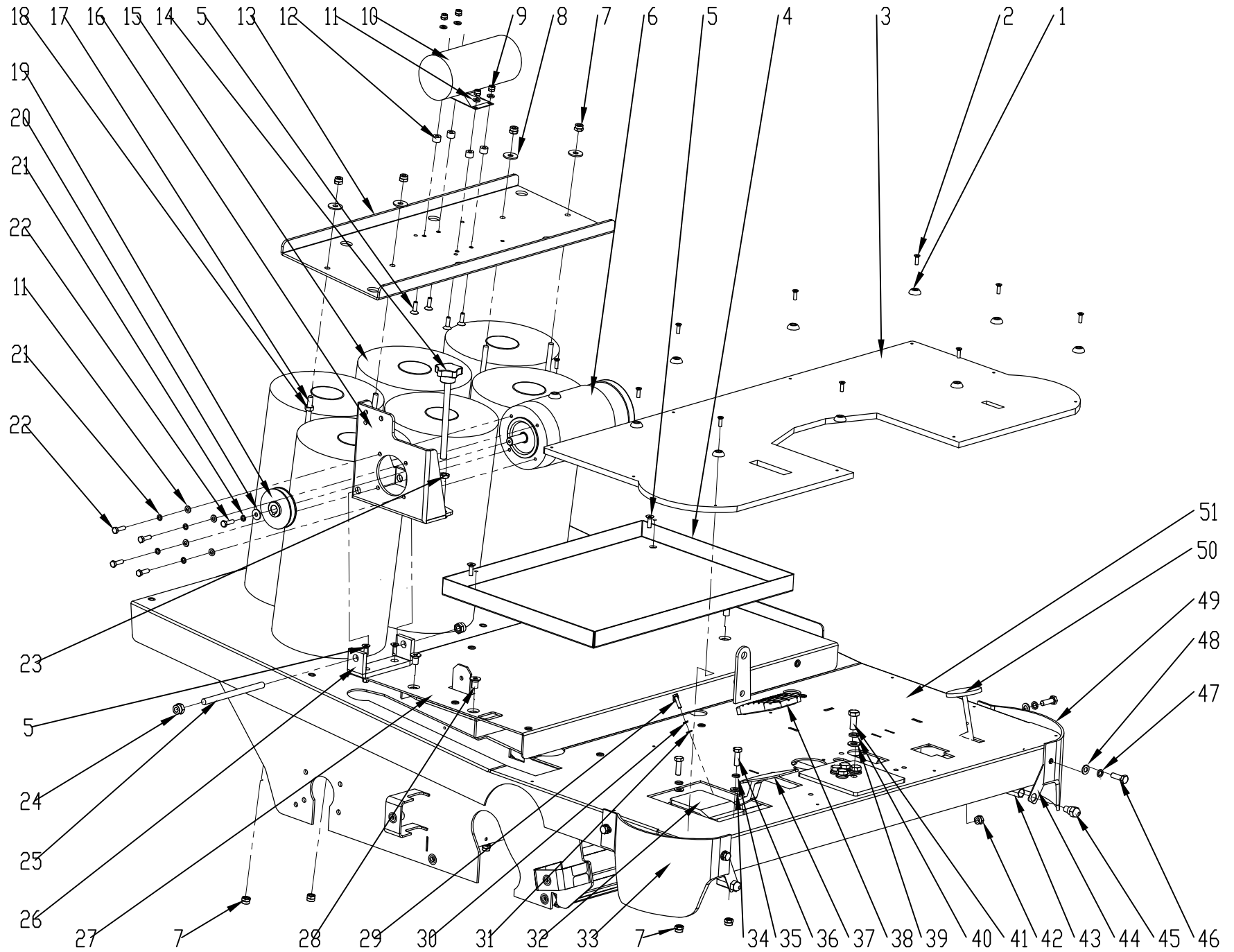
项目号 ITEM	零件号 P/N	名称	数量 QTY	DESCRIPTION
29	N030004	平垫 10x20x2 镀锌	1	WASHER 10x20x2 ZINC
30	N030074	平垫 6x22x2 镀锌	1	WASHER 6x22x2 ZINC
31	B070022	拉簧 2X15X118	1	SPRING 2x15x118
32	N070011	轴承 6202	4	6202 BEARING
33	N080019	卡簧 D35	4	STOP RING Φ35
34	A030112	滚刷安装支架	1	ROLLING BRUSH MOUNTING BRACKET
35	A030113	滚刷连接板	1	ROLLING BRUSH CONNECTING PLATE
36	B010034	轴套 20 16.5	2	SPACER Φ20x16.5
37	B010059	中心轴隔套 Φ22xΦ15.1x11	1	SPACER Φ22x15.1x11
38	C030027	滚刷侧挡板	1	THE SIDE FENCES
39	D010019A	滚刷固定轴	2	ROLLING AXIS
40	B060178	滚刷中心轴	1	CENTRAL AXIS
41	N150139	黄色滚刷700	1	YELLOW BRUSH 700



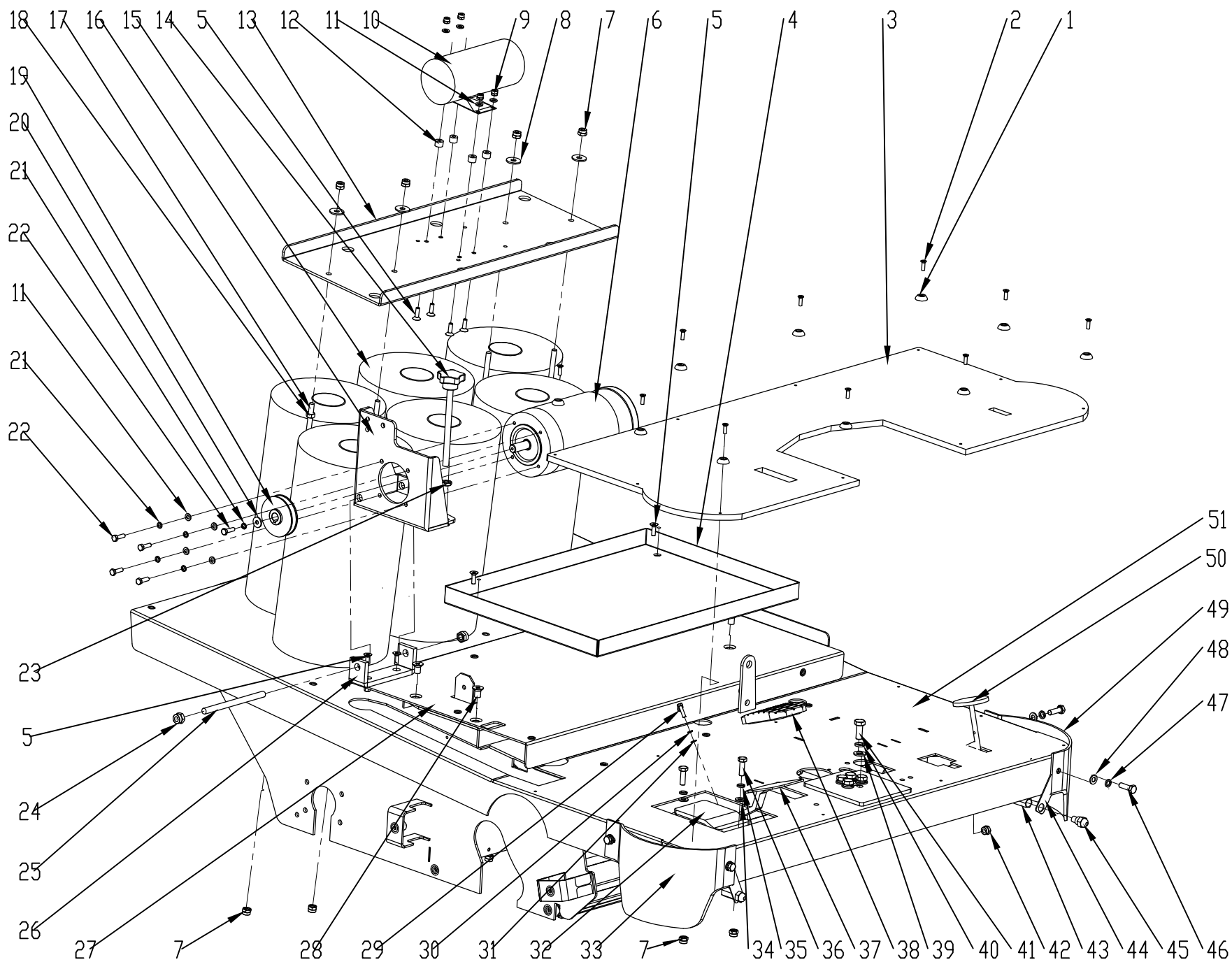
项目号 ITEM	零件号 P/N	名称	数量 QTY	DESCRIPTION
42	A050082	轴承固定座 TS1300PRO	1	BEARING SUPPORT
43	B010061	多带轮轴套 $\Phi 32.5 \times \Phi 20 \times 8\text{mm}$	1	AXLE SLEEVE 32.5x20x8
44	N070015	轴承 6302	1	BEARING 6302
45	B050064	四氟垫片 $\Phi 30 \times \Phi 20 \times 2$	1	WASHER 30x20x2
46	N080007	卡簧 D40	2	STOP RING $\Phi 40$
47	N040003	弹垫 10 镀锌	1	LOCK WASHER M10 ZINC
48	B050054	垫片 $8 \times 28 \times 3$	1	WASHER 8x28x3 ZINC
49	N070001	轴承 6004	2	BEARING 6004
50	N010019	内六角沉头螺钉 $M8 \times 18$ -镀锌	1	COUNTERSUNK HEAD SCREW $M8 \times 18$ ZINC
51	N010194	外六角螺栓- $M10 \times 16$ -镀锌	1	SCREW $M10 \times 16$ ZINC
52	B010046	轴套 $\varnothing 27 \times 6$	1	SPACER $\Phi 27 \times 6$
53	N090021	V 型带	1	V-BELT SPZ1162
54	B010036	皮带轮 $\Phi 126$	1	PULLEY $\Phi 126$
55	N090100	锯齿带	1	TOOTHED BELT XPZ 730
56	B010035	皮带轮 $\Phi 160$	1	PULLEY $\Phi 160$
57	A040105	左边刷支架 TS1300 Pro	1	LEFT SIDE BRUSH SUPPORT
58	A010140	扇形挡板	1	FAN-SHAPED BAFFLE
59	N030006	平垫 $8 \times 16 \times 1.6$ 镀锌	1	WASHER $8 \times 16 \times 1.6$ ZINC
60	N020056	四槽螺母 $M20 \times 1.5$	1	FOUR SLOT NUT $M20 \times 1.5$ BLACK
61	N040027	止退垫片- $D20.5 \times D27 \times 1$	1	RETREAT PADS $\Phi 20.5 \times \Phi 27 \times 1$
62	N060021	平键 $4.8 \times 4.8 \times 24.8$	1	KEY $4.8 \times 4.8 \times 24.8$
63	W020291	边刷电机组件-左24V-100W	1	SIDE BRUSH MOTOR ASSEMBLY LEFT 24V-100W
64	B060105	拉线 255	1	PULL LINE 255
65	B060106	拉线 720	1	PULL LINE 720
66	N010062	外六角- $M5 \times 20$ -镀锌	2	SCREW $M5 \times 20$ ZINC



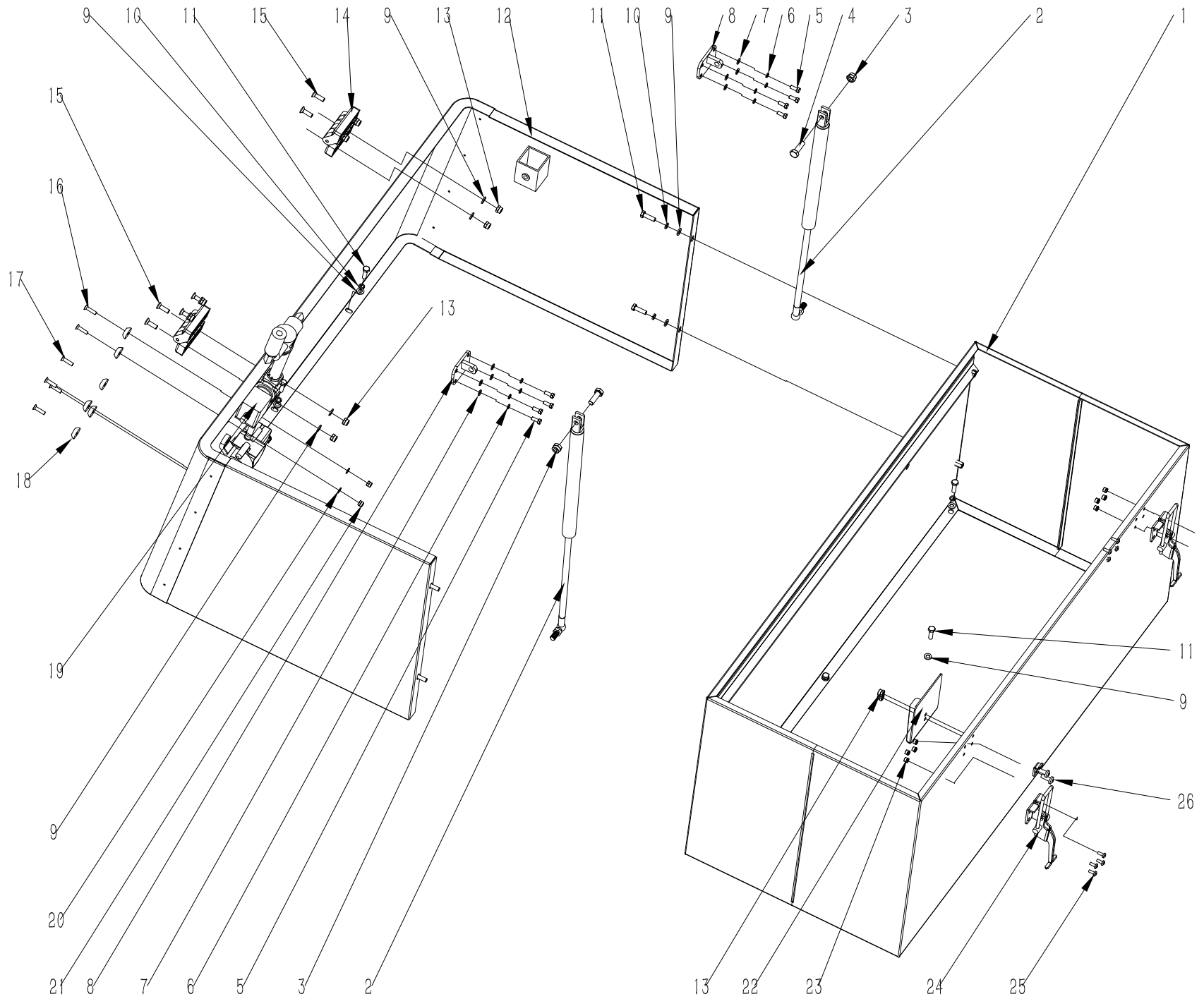
项目号 ITEM	零件号 P/N	名称	数量 QTY	DESCRIPTION
1	N010094	外六角 M8x25 不锈钢	3	SCREW M8X25 A2
2	N030010	平垫 8x16x1.6 不锈钢	4	WASHER 8X16X1.6 A2
3	N010134	沉头十字螺钉 M5x16 不锈钢	4	SPECIAL SCREW M5×16 A2
4	N040017	弹垫 8 不锈钢	2	LOCK WASHER M8 A2
5	A010178	侧挡板固定钢条	2	FIXED PLATE
6	C030026	侧边拂尘挡板	2	BACK DUST RUBBER
7	N030013	大平垫 5x15x1.2 镀锌	11	WASHER 5X15X1.2 ZINC
8	N020016	自锁螺母 M5 镀锌	17	LOCK NUT M5 ZINC
9	N030008	大平垫 6x18x1.6 镀锌	4	WASHER 6X18X1.6 ZINC
10	B050042	拂尘后挡板	1	BACK DUST RUBBER
11	N010024	外六角 M5x12 镀锌	7	SCREW M5X12 ZINC
12	N010005	外六角 M6x16 镀锌	2	SCREW M6X16 ZINC
13	N010062	外六角 M5x20 镀锌	6	SCREW M5X20 ZINC
14	A010136	拂尘挡板固定钢条2	1	STRIP
15	B050043	拂尘前挡板	1	FRONT DUST RUBBER
16	A010202	拂尘挡板固定钢条5	1	STRIP
17	N060015	气弹簧扁头 M6	2	AIR SPRING FLAT HEAD
18	B010042	拉杆 φ6	1	PULL RODφ6
19	N020024	自锁螺母 M8 不锈钢	1	LOCK NUT M8 A2
20	N010064	外六角 M4x20 镀锌	1	SCREW M4X20 ZINC
21	A040106	拂尘前挡板提升拉杆 TS1300 PRO	1	LIFT PEADL
22	N020050	螺母 M4 镀锌	1	NUT M4 ZINC
23	N020025	自锁螺母 M4 镀锌	1	LOCK WASHER M4 ZINC
24	N100035	R 型弹簧插销 φ2×40	2	OPENING PINφ2×40



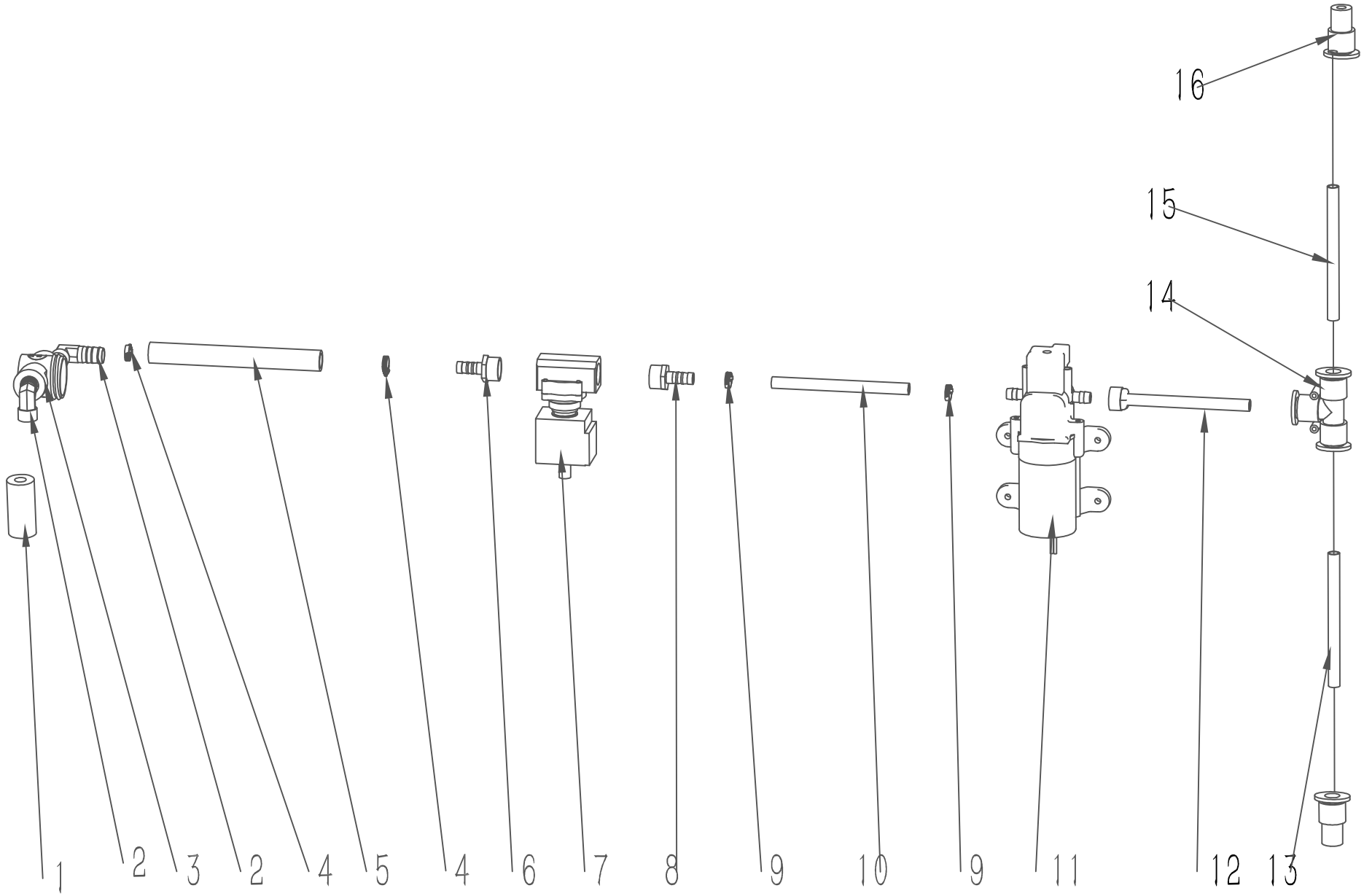
项目号 ITEM	零件号 P/N	名称	数量 QTY	DESCRIPTION
1	C020028	异形垫片 $\phi 5$	10	SPECIAL WASHER $\phi 5$
2	N010230	沉头十字-M5 \times 16-镀黑锌	10	SPECIAL SCREW M5X16
3	A010135	脚踏板(V01)	1	FOOD PAD
4	A010173	电池座 494 \times 354	1	BATTERY SEAT 484X354
5	N010016	沉头内六角 M6 \times 20 不锈钢	8	COUNTERSUNK HEAD SCREW M6X20 A2
6	W020292	滚刷电机组件-24V-500W	1	BRUSH MOTOR ASSEMBLY 24V 500W
7	N020001	自锁螺母 M8 镀锌	10	LOCK NUT M8 ZINC
8	N030027	大平垫 8 \times 24 \times 2 镀锌	4	WASHER 8X24X2 ZINC
9	N020012	自锁螺母 M6 镀锌	4	LOCK NUT M6 ZINC
10	W020293	震动电机组件-24V-100W	1	VIBRATION MOTOR ASSEMBLY 24V 100W
11	N030007	平垫 6 \times 12 \times 1.6 镀锌	8	WASHER 6X12X1.6 ZINC
12	B050055	橡胶减震垫	4	RUBBER SHOCK ABSORBERS
13	A010145	滤网固定座	1	FILTER HOLDER
14	N110029	星型手柄螺帽 M10 \times 145	1	KNOB M10
15	N110025	震尘过滤桶 187	6	DUST FILTER 187 \times 364
16	A010156	滚刷电机支架	1	BRUSH MOTOR SUPPORT
17	N110027	M8 \times 412 螺杆	4	BOLT M8X412
18	N020018	螺母 M8 镀锌	4	NUT M8 ZINC
19	B010048	电机皮带轮 $\phi 69$	1	PULLEY $\phi 69$
20	N030008	大平垫 6 \times 18 \times 1.6 镀锌	1	WASHER 6X18X1.6 ZINC
21	N040001	弹垫 6 镀锌	5	LOCK WASHER M6 ZINC
22	N010006	外六角 M6 \times 20 镀锌	5	SCREW M6X20 ZINC
23	N020031	螺母 M10 镀锌	1	NUT M10 ZINC
24	N020002	自锁螺母 M10 镀锌	2	LOCK NUT M10 ZINC
25	N110028	螺栓 M10 \times 145	1	BOLT M10X145 ZINC
26	A010164	滚刷电机固定支架	1	FIXED SUPPORT
27	A010163	电池盒固定板	1	BATTERY CASE MOUNTING PLATE
28	N010171	沉头十字螺钉 M10 \times 16 镀锌	4	SPECIAL SCREW M10X16 ZINC
29	N010165	外六角 M5 \times 25 不锈钢	1	SCREW M5X25 A2



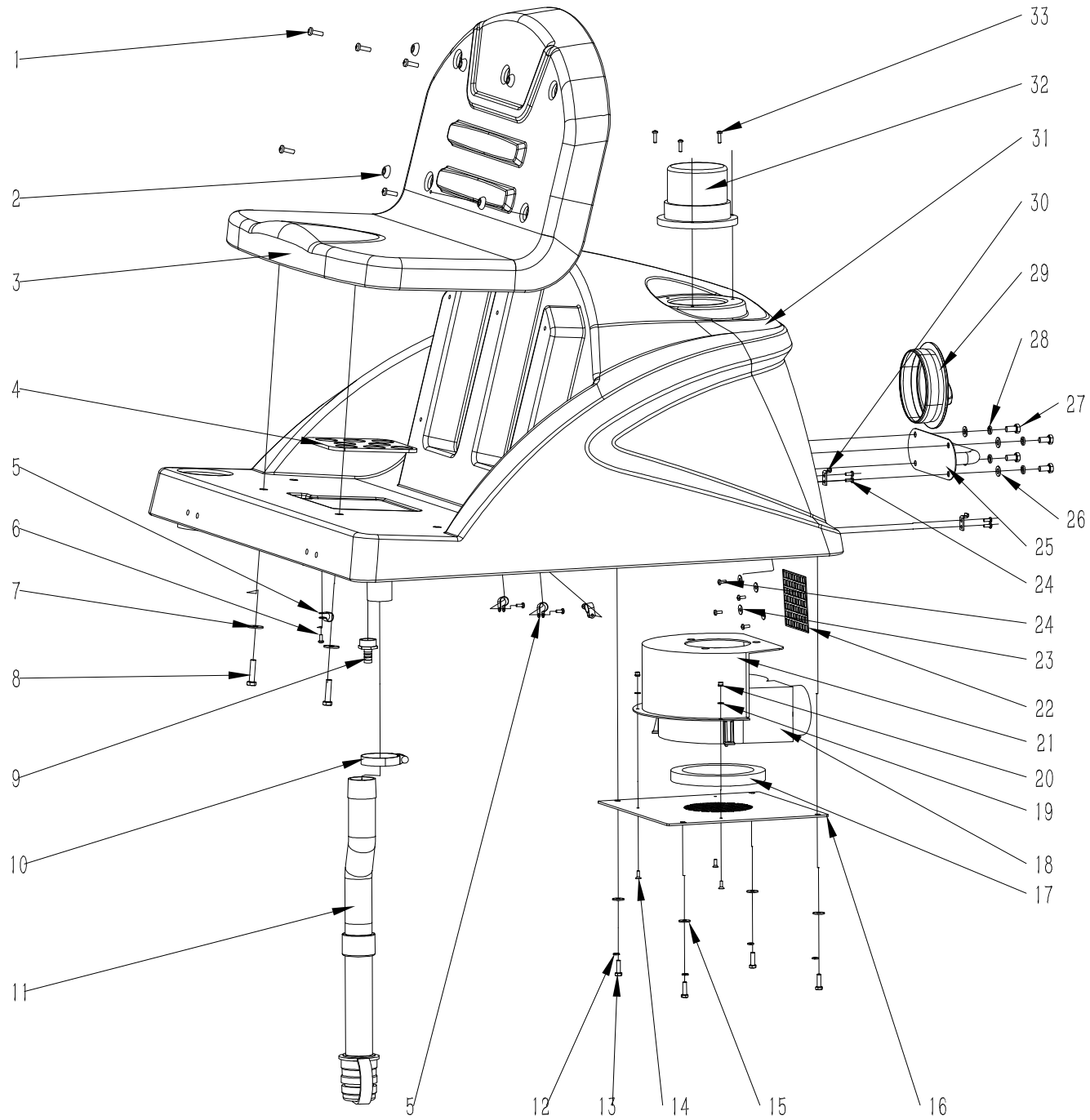
项目号 ITEM	零件号 P/N	名称	数量 QTY	DESCRIPTION
30	N040023	弹垫 5 不锈钢	1	LOCK WASHER M5 A2
31	N030016	平垫 5x10x1 不锈钢	1	WASHER 5X10X1 A2
32	E020034	脚踏电位器 0-5K	1	POTENTIOMETER 0-5K
33	A010171	左刷防护挡板	1	LEFT BUMPER
34	N030006	平垫 8x16x1.6 镀锌	2	WASHER 8X16X1.6 ZINC
35	N040013	弹垫 8 镀锌	2	LOCK WASHER M8 ZINC
36	N010007	外六角 M8x25 镀锌	2	SCREW M8X25 ZINC
37	A030102	脚踏 TS1300	1	PEDAL T1300
38	C030006	脚踏垫 98x80	1	RUBBER MAT 98X80
39	N030004	平垫 10x20x2 镀锌	5	WASHER 10X20X2 ZINC
40	N040003	弹垫 10 镀锌	5	LOCK WASHER M10 ZINC
41	N010060	外六角 M10x25 镀锌	5	SCREW M10X25 ZINC
42	N020024	自锁螺母 M8 不锈钢	2	LOCK NUT M8 A2
43	F020020	2分 直通街头	2	DIRECT CONNECTOR 1/4
44	A010177	喷头固定条	2	SPRAY HEAD SUPPORT
45	F020017	雾化喷头	2	NOZZLE 0018
46	N010094	外六角 M8x25 不锈钢	4	SCREW M8X25 A2
47	N040017	弹垫 8 不锈钢	4	LOCK WASHER M8 A2
48	N030010	平垫 8x16x1.6 不锈钢	4	WASHER 8X16X1.6 A2
49	A010172	右刷防护挡板	1	RIGHT BUMPER
50	A040106	拂尘前挡板提升拉杆 TS1300 PRO	1	WHISK FRONT BAFFLE LIFT LEVER
51	A010194	底座架	1	BASE FRAME



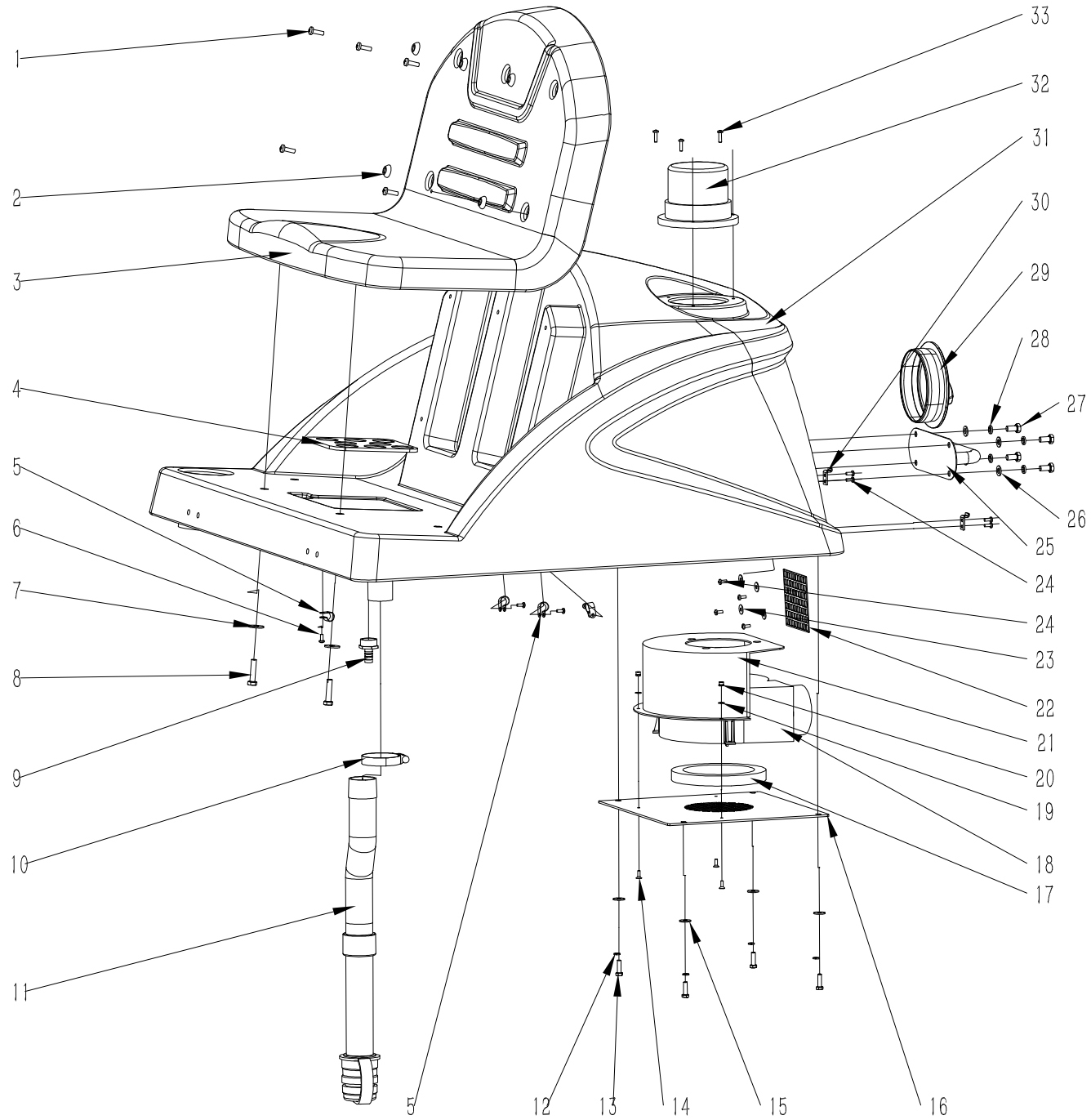
项目号 ITEM	零件号 P/N	名称	数量 QTY	DESCRIPTION
1	A010161	扫地机后壳体	1	BACK CASE
2	N080054	210×200N 气弹簧	2	GAS SPRING 210×200N
3	N020001	自锁螺母 M8 镀锌	2	LOCK NUT M8 ZINC
4	N010007	外六角 M8×25 镀锌	2	SCREW M8×25 ZINC
5	N010024	外六角 M5×12 镀锌	8	SCREW M5×12 ZINC
6	N040007	弹垫 5 镀锌	8	LOCK WASHER M5 ZINC
7	N030031	小平垫 5×10×1 镀锌	8	WASHER 5×10×1 ZINC
8	A030209	气弹簧固定座-TS1300	2	GAS SPRING RETAINER FOR TS1300
9	N030007	平垫 6×12×1.6 镀锌	21	WASHER 6×12×1.6 ZINC
10	N040001	弹垫 6 镀锌	12	LOCK WASHER M6 ZINC
11	N010006	外六角 M6×20 镀锌	13	SCREW M6×20 ZINC
12	A010162	扫地机前壳体	1	FRONT CASE
13	N020012	自锁螺母 M6 镀锌	10	LOCK NUT M6 ZINC
14	C020011	合页	2	HINGE 40×14
15	N010233	沉头内六角 M6×25 镀黑锌	8	SCREW M6×25 BLACK ZINC
16	N010230	沉头十字-M5×16-镀黑锌	2	SPECIAL SCREW M5X16 BLCK ZINC
17	N010231	沉头十字-M5×20-镀黑锌	4	SPECIAL SCREW M5X20 BLCK ZINC
18	C020028	异性垫片Φ5	6	SPECIAL WASHER Φ5
19	W010265	水路组件	1	WATER ASSEMBLY
20	N030031	平垫 5×10×1 镀锌	6	WASHER 5×10×1 ZINC
21	N020016	自锁螺母 M5 镀锌	6	LOCK NUT M5 ZINC
22	A010160	壳体固定架	1	CASE HOLDER
23	N020025	自锁螺母 M4 镀锌	8	LOCK NUT M4 ZINC
24	N090039	扫地车搭扣	2	HSAP SMALL
25	N010197	盘头十字螺钉 M4×10 镀锌	8	SCREW M4×10 ZINC
26	N010105	盘头十字螺钉 M6×16 不锈钢	2	CORSS SCREW M6×16 A2
27	N090033	前密封条	1.7	FRONT SEALING STRIP
28	N090034	后密封条	2.5	BACK SEALING STRIP



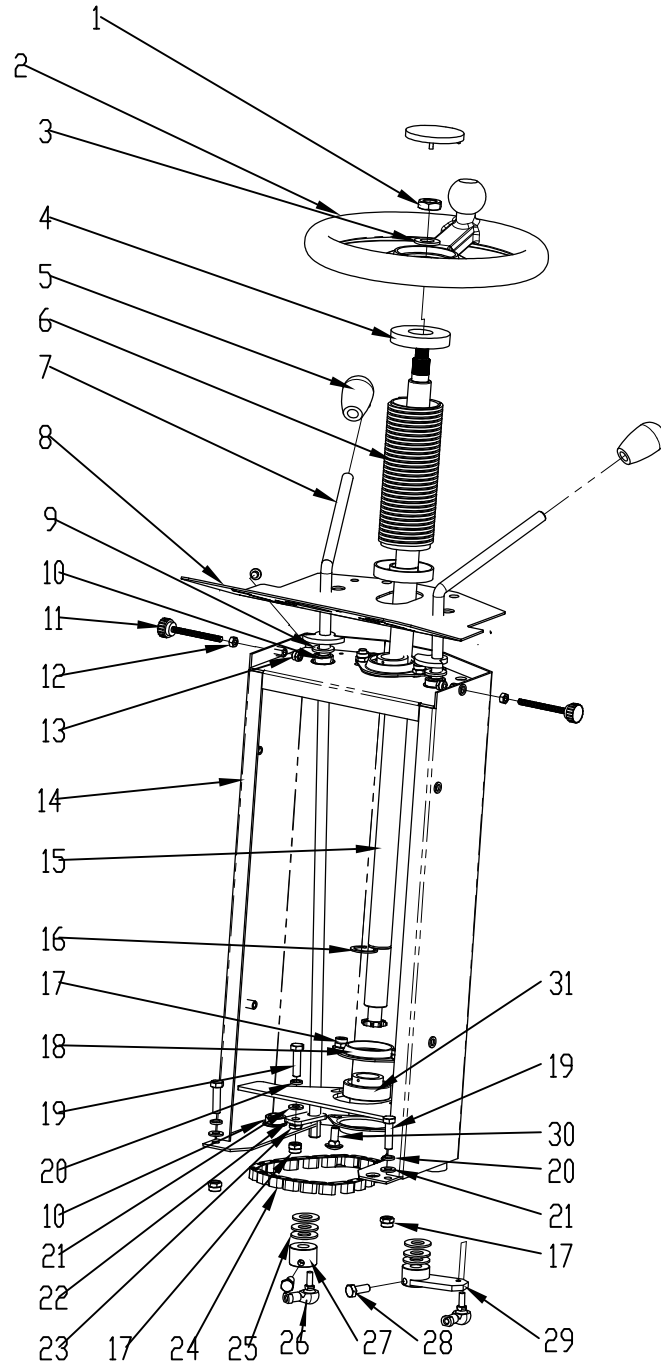
项目号 ITEM	零件号 P/N	名称	数量 QTY	DESCRIPTION
1	F050065	水管 D=14 d=9	0.05	SILICONE HOSE D=14 D=9 L=50
2	F020005	快速弯头 3/8	2	CONNECTOR BEND 3/8
3	F010004	过滤器 3/8	1	FILTER 3/8
4	F050003	卡箍 ϕ 10-16	2	SCREW CLAMP ϕ 10-16
5	F050094	钢丝水管 D=18 d=13	0.2	STEEL PIPE D=18 D=13 L=115
6	F020002	快速接头 1/2 D=13 d=10	1	CONNECTOR 1/2
7	W020359	电磁阀组件3-T55-70BT	1	SOLENOID VALVE ASSEMBLY T55/70BT
8	F020016	快速接头 1/2 D=10 d=8	1	CONNECTOR 1/2 D=10 D=8
9	F050007	卡箍 ϕ 8-12	5	SCREW CLAMP ϕ 8-12
10	F050065	水管 D=14 d=9	0.1	SILICONE HOSE D=14 D=9 L=100
11	W020358	智能型单螺纹右出水水泵-24V-25W	1	WATER PUMP 24V-25W
12	F050113.3	水管 D=12 d=8	1	SILICONE HOSE D=12 D=8 L=1000
13	F050113.4	水管 D=12 d=8	0.8	SILICONE HOSE D=12 D=8 L=800
14	F020072	三通 12mm	1	TEE FITTING 12MM
15	F050113.5	水管 D=12 d=8	0.3	SILICONE HOSE D=12 D=8 L=300
16	F020073	快速接头 1/4 PC12-02	2	CONNECTOR 1/4 PC12-02



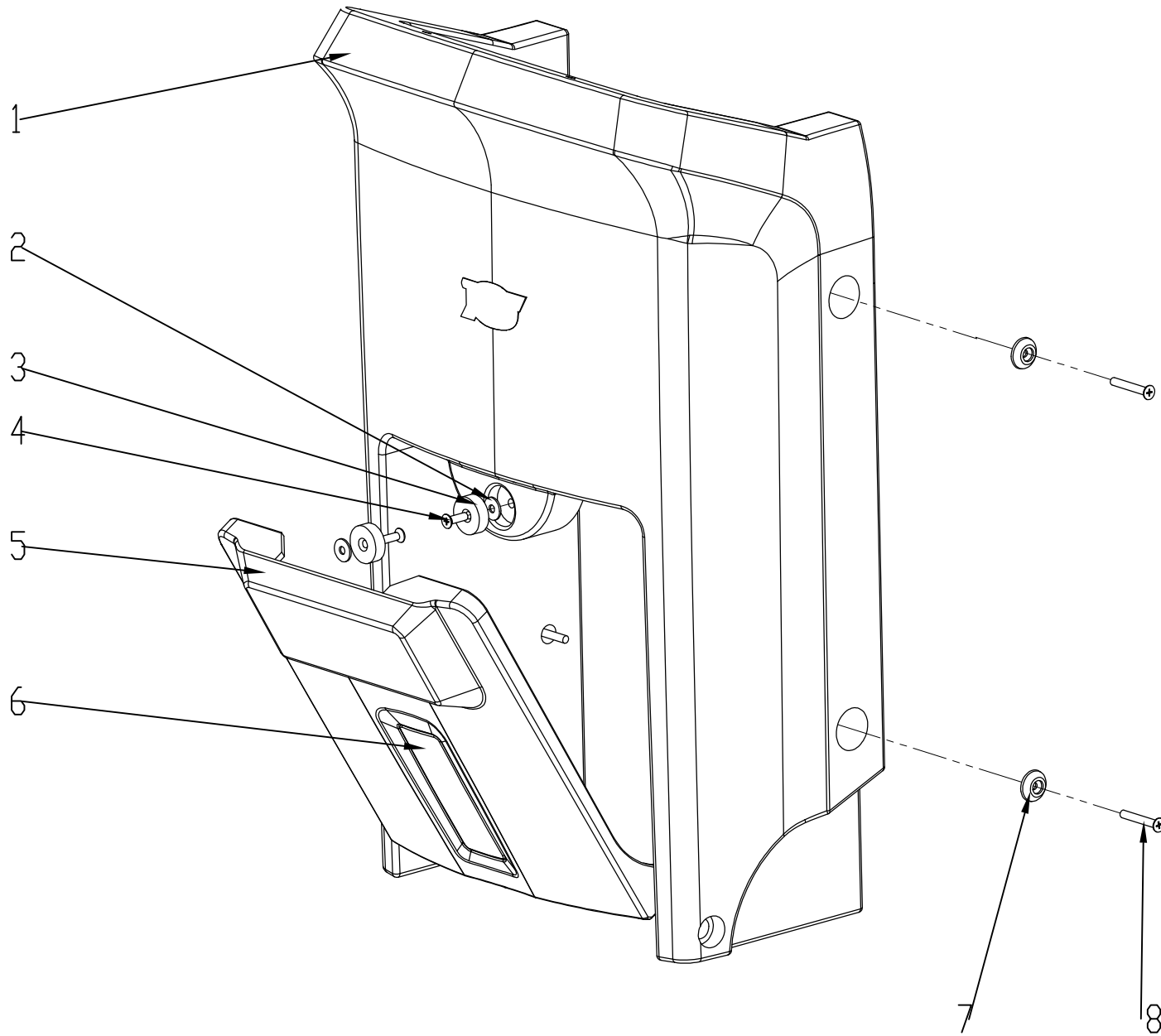
项目号 ITEM	零件号 P/N	名称	数量 QTY	DESCRIPTION
1	N010172	盘头十字螺钉 M6x20 发黑	5	SCREW M6X20 BLACK ZINC
2	C020028	异形垫片 ϕ 5	5	SPECIAL WASHER ϕ 5
3	C010018	150L 坐垫	1	SEAT 150
4	E020007	压力开关 150x135x5 常开	1	PRESSURE SWITCH 150x135x5 NO
5	C020333	R 型线卡 13.2	4	R TYPE LINE CARD 13.2
6	N010197	盘头十字螺钉 M4x10 镀锌	4	SCREW M4X10 ZINC
7	N030027	大平垫 8x24x2 镀锌	2	WASHER 8X24X2 ZINC
8	N010008	外六角 M8x35 镀锌	2	SCREW M8X35 ZINC
9	F020014	快速接头 四分之三 D=12 d=10	1	CONNECTOR 3/4 D=12 D=10
10	F050006	卡箍 33-57	1	SCREW CLAMP ϕ 33-57
11	F060018	排水管 D38x800	1	DRAINAGE PIPE D38x800
12	N030008	大平垫 6x18x1.6 镀锌	4	WASHER 6X18X1.6 ZINC
13	N040001	弹垫 6 镀锌	4	LOCK WASHER M6 ZINC
14	N010006	外六角 M6x20 镀锌	4	SCREW M6X20 ZINC
15	N010047	沉头十字螺钉 M4x12 不锈钢	3	SPECIAL SCREW M4X12 A2
16	A010175	扫地车 风机安装板	1	VACUUM MOTOR MOUNTING PLATE
17	F040006	海绵垫	1	SPONGE 114x150x16
18	E040048	真空电机	1	VACUUM MOTOR 24V 380W
19	N030045	平垫 4x9x1 镀锌	3	WASHER 4x9x1 ZINC
20	N020042	自锁螺母 M4 不锈钢	3	LOCK NUT M4 A2
21	A010180	风机安装外罩	1	WIND FAN MOUNTING COVER
22	A010176	风机出风口护网	1	GRID
23	N300040	大平垫 5x15x1.2 不锈钢	4	WASHER 5x15x1.2 A2
24	N010070	盘头十字螺钉 M4x10 不锈钢	8	SCREW M4X10 A2
25	C080036	水箱把手-TS1300	1	TANK HANDLE
26	N030081	大平垫 8x16x1.6 镀黑锌	4	WASHER 8x16x1.6 BLACK ZINC
27	N010121	外六角 M8x16 镀锌	4	SCREW M8X16 ZINC
28	N040031	弹垫 8 镀黑锌		LOCK WASHER M8 BLACK ZINC
29	C020005	清水箱注水口盖子 ϕ 115 螺纹	1	COVER ϕ 115



项目号 ITEM	零件号 P/N	名称	数量 QTY	DESCRIPTION
30	N090039	水箱塔扣	2	HSAP SMALL
31	C010023	扫地车 水箱 绿色	1	WATER TANK
32	E050103	警示灯	1	WARNING LIGHT
33	N010052	盘头十字自攻螺丝 ST4.2x16 不锈钢	3	CROSS HEAD ST4.2×16 A2

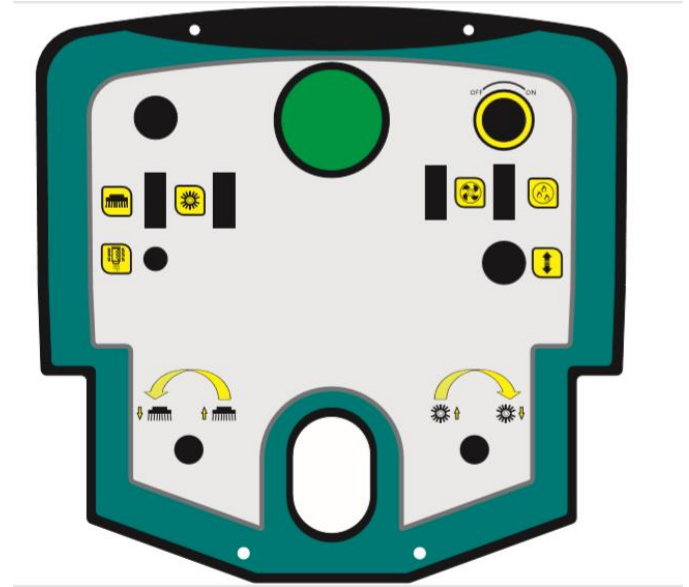
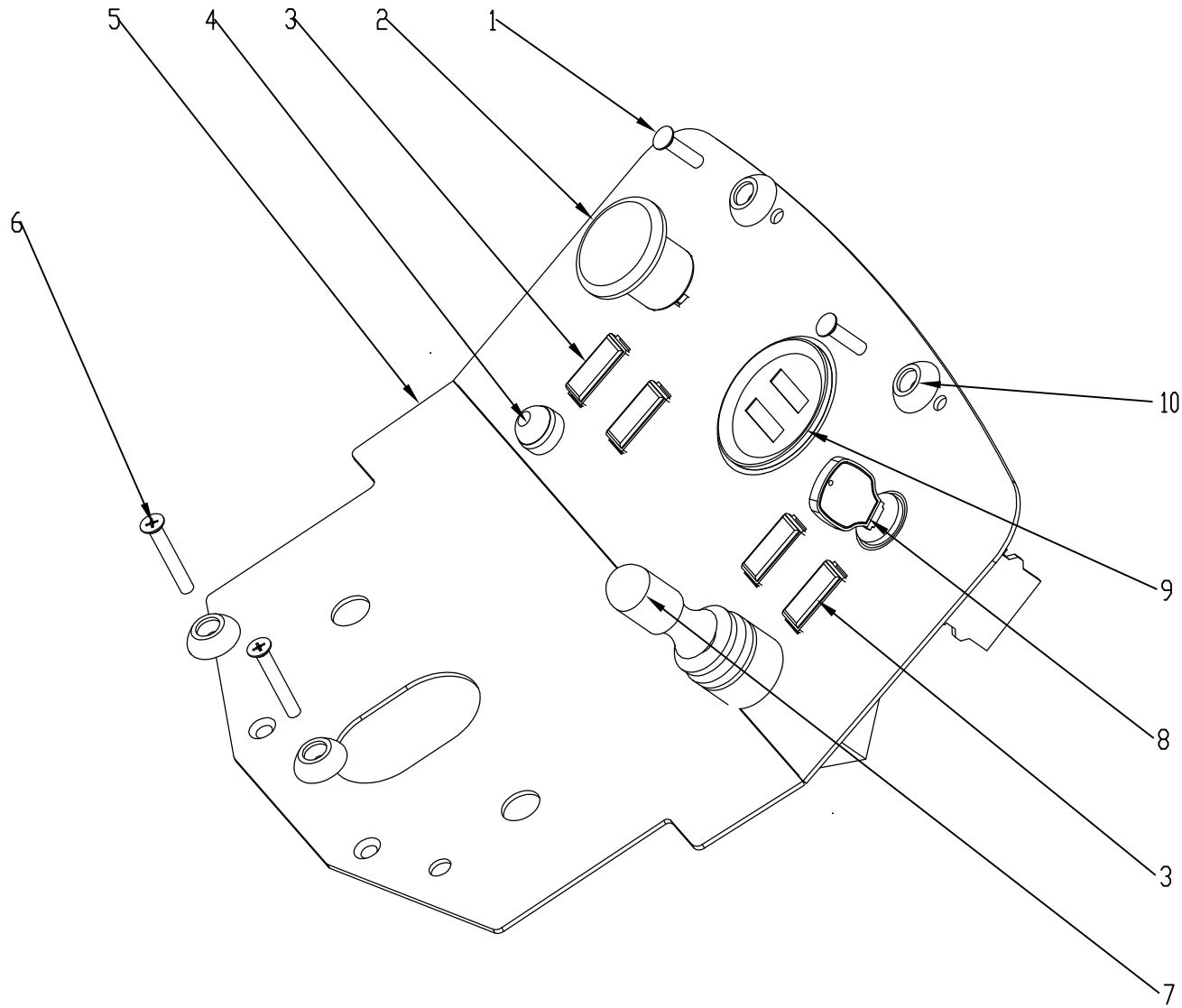


项目号 ITEM	零件号 P/N	名称	数量 QTY	DESCRIPTION
1	N020035	薄螺母 M14 镀锌	1	NUT M14 ZINC
2	N110036	带助力球方向盘 Φ265	1	STEERING WHEEL BOOSTER BALL
3	N030029	平垫 14x28x2.5 不锈钢	1	SCREW 14X28X2.5 A2
4	N090005	端盖 Φ (65-27) x12	2	END COVERΦ (65-27) X12
5	N010007	提升摇臂把手 M12	2	KNOB M12
6	N090006	波纹管轴套 Φ50x160	1	BELLOWS Φ50X200
7	A010166	操纵杆 ∅12	2	JOYSTICK
8	W010268	控制面板组件	1	CONTROL PANEL ASSEMBLY
9	N030011	平垫 12x24x2.5 镀锌	2	WASHER 12X24X2.5 ZINC
10	N070017	定心轴承 12	4	BEARING KGLM-12
11	N010025	调节手柄	2	ADJUST HANDLE
12	N020022	螺母 M6 镀锌	2	NUT M6 ZINC
13	N020012	自锁螺母 M6 镀锌	2	LOCK NUT M6 ZINC
14	A010165	转向器支架	1	STEERING GEAR SUPPORT
15	B010039A	方向轴	1	STEERING AXIS A
16	N080020	卡簧 D24	1	CIRCLIP Φ24
17	N020001	自锁螺母 M8 镀锌	8	LOCK NUT M8 ZINC
18	N070004	SB 205 轴承座	4	SB205 BEARING BLOCK
19	N010002	外六角 M8x30 镀锌	4	SCREW M8X30 ZINC
20	N040013	弹垫 8 镀锌	4	LOCK WASHER M8 ZINC
21	N030006	平垫 8x16x1.6 镀锌	4	SCREW 8x16x1.6 ZINC
22	A010179	圆轴承固定板	2	BEARING FIXED PLATE
23	N020053	薄螺母 M10 镀锌	2	NUT M10 ZINC
24	N100018	链条 06B-23	1	CHAIN 06B-23/45
25	N030001	平垫 14x29x2 尼龙	6	WASHER 14X29X2 NYLON
26	N070018	弯杆球头关节轴承 cs10	2	BEARING CS10
27	A010153	左拉线摇臂	1	LEFT ROCKER
28	N010034	外六角 M8x20 镀锌	2	SCREW M8X20 ZINC
29	A010152	右拉线摇臂	1	RIGHT ROCKER
30	N010091	大圆头方颈螺栓 M8x20 镀锌	4	SCREW M8X20 ZINC
31	N070005	SB 205 轴承	2	SB205 BEARING

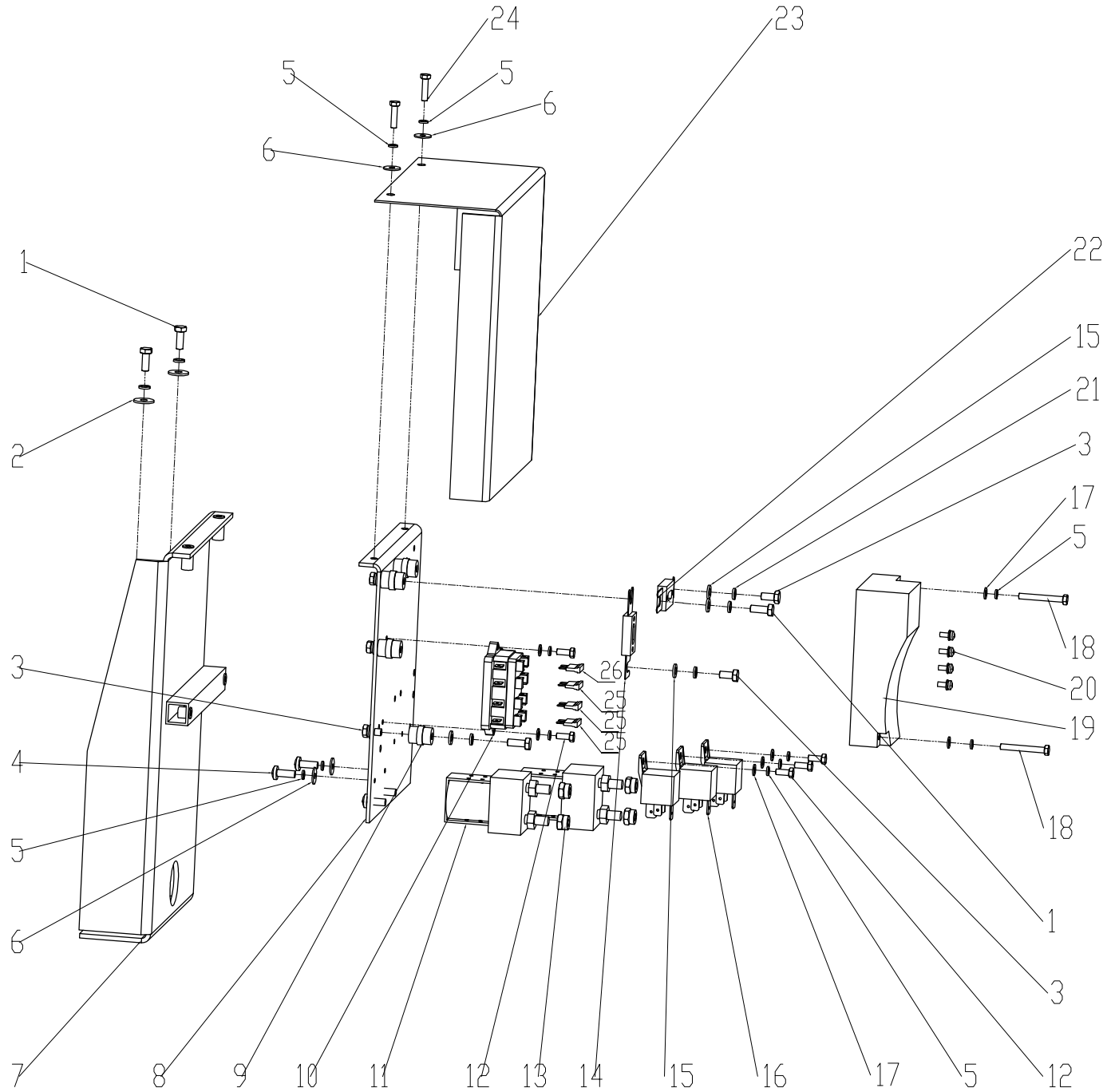


项目号 ITEM	零件号 P/N	名称	数量 QTY	DESCRIPTION
1	C010017	转向器外罩 T150	1	COVERED T150
2	N030013	平垫 5X15X1.2 镀锌	2	WASHER 5X15X1.2 ZINC
3	N060007	磁石	2	MAGNET
4	N010134	十字沉头 M5X16 不锈钢	2	CROSS HEAD M5X16 A2
5	C010049	转向器前挡板 TS1300	1	DOOR
6	E050112	前灯 TS1300	1	HEADLIGHT TS1300
7	C020028	异形垫片 Φ5	4	SPECIAL WASHER Φ5
8	N010232	十字沉头 M5X35 镀黑锌	4	CROSS HEAD M5X35 BLACK ZINC

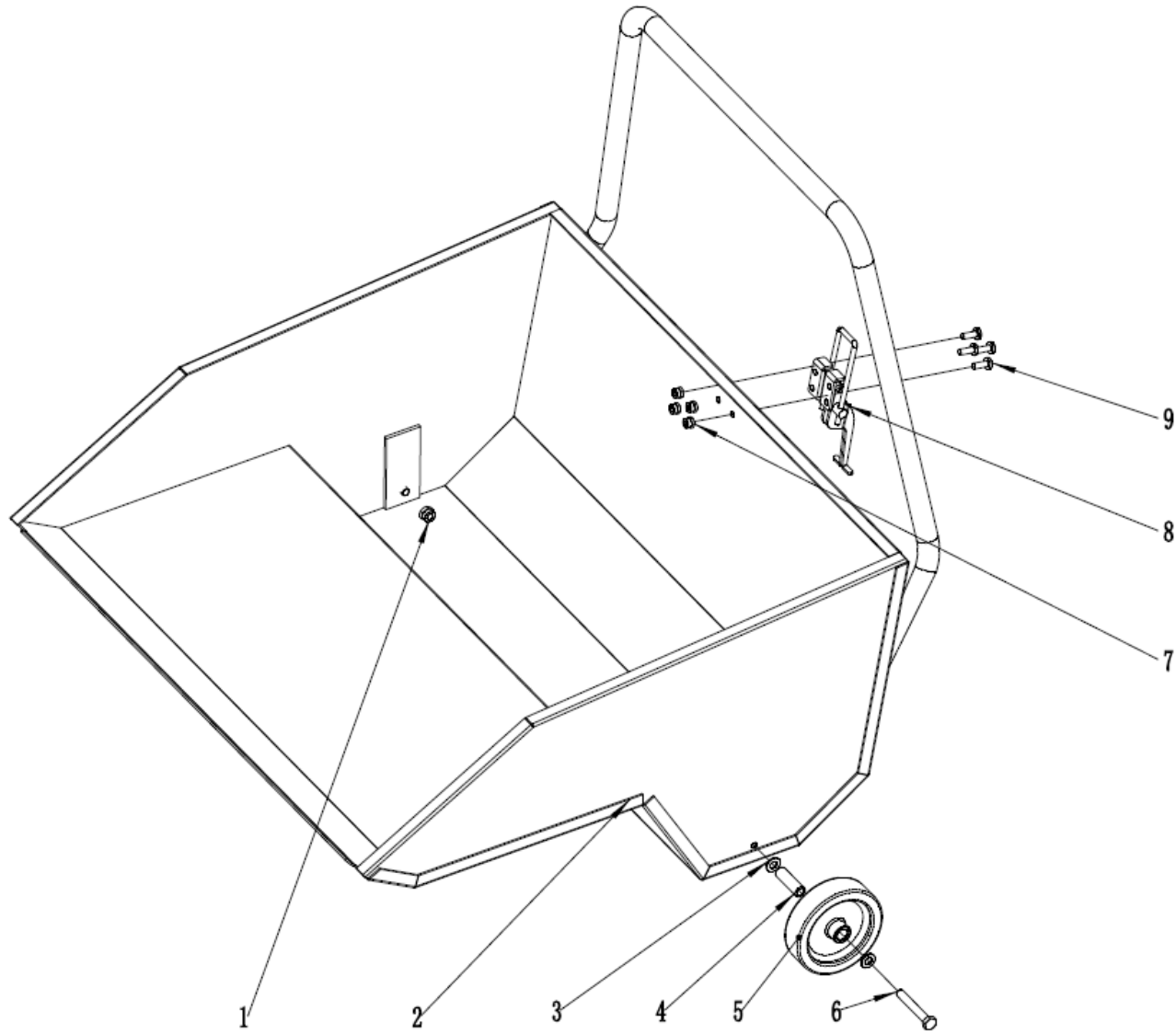




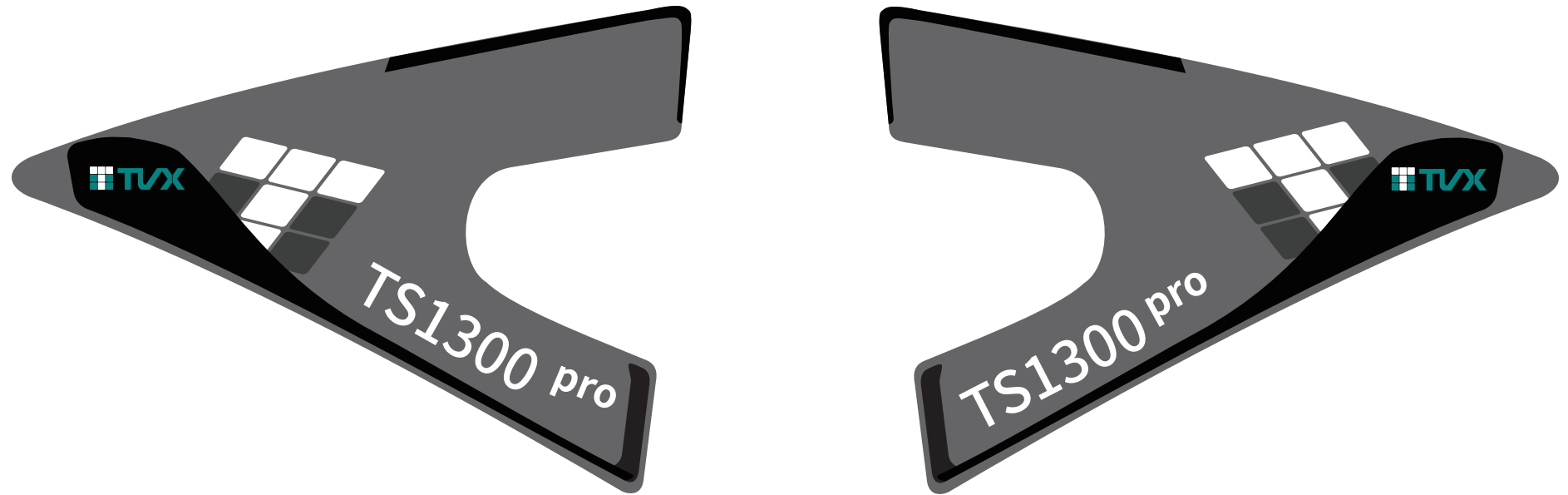
项目号 ITEM	零件号 P/N	名称	数量 QTY	DESCRIPTION
1	N010230	十字沉头 M5X16 镀黑锌	2	CROSS HEAD M5X16 BLACK ZINC
2	E020028	急停开关 220V 10A	1	EMERGENCY STOP SWITCH 220V 10A
3	E020045	船板开关	4	SWITCH 2 GEARS
4	W020258	选择按钮组件	1	BUTTON
5	A020063	扫地车控制面板 TS1300 Pro	1	CONTROL PANEL
6	N010232	十字沉头 M5X35 镀黑锌	2	CROSS HEAD M5X35 BLACK ZINC
7	E020035	十字开关 ϕ 22	1	CROSS SWITCH ϕ 22
8	W020013	钥匙开关组件 双开	1	KEY SWITCH
9	E050075	电量指示器 24V	1	COULOMETER 24V
10	C020028	异形垫片 ϕ 5	4	SPECIAL WASHER Φ 5
11	C040331	控制面板面贴 TS1300 Pro 绿色	1	CONTROL PANEL PASTE



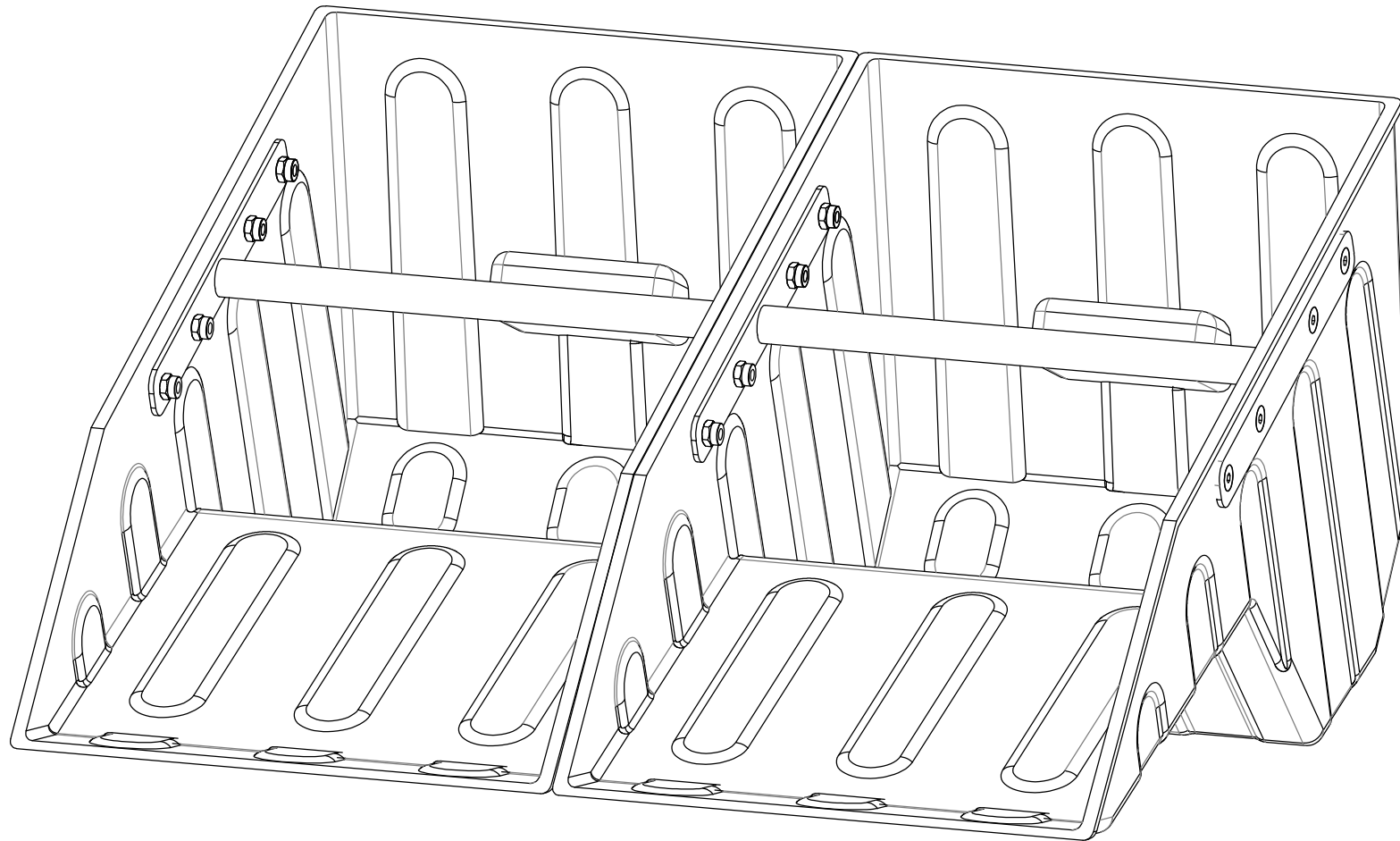
项目号 ITEM	零件号 P/N	名称	数量 QTY	DESCRIPTION
1	N010005	外六角 M6x16 镀锌	4	SCREW M6X12 ZINC
2	N030008	大平垫 6x18x1.6 镀锌	2	WASHER 6X18X1.6 ZINC
3	N010145	外六角 M6x12 不锈钢	6	SCREW M6X16 A2
4	N010073	盘头十字螺钉 M5x16 镀锌	4	SCREW M5X16 ZINC
5	N040007	弹垫 5 镀锌	13	LOCK WASHER M5 ZINC
6	N030013	大平垫 5x15x1.2 镀锌	6	WASHER 5X15X1.2 ZINC
7	A010157	控制板支架	1	RELAY SUPPORT
8	A030114	电器安装板 TS1300 pro	1	ELECTRICAL INSTALLTION PLATE
9	E050076	绝缘隔离柱 M6-20xD16	4	ISULATOR M6 20×Φ16
10	E050078	保险插座 4P	1	FUSE HOILDER
11	E050095	直流接触器 24V 100A	2	SWEEPER RELAY 24V 100A
12	N010024	外六角 M5x12 镀锌	5	SCREW M5X12 ZINC
13	N020001	自锁螺母 M8 镀锌	4	LOCK NUT M8 ZINC
14	E050080	保险 22x80 60A	1	FUSE 60A
15	N030007	平垫 6x12x1.6 镀锌	8	WASHER 6X12X1.6 ZINC
16	E050083	微型继电器 24V 80A	3	MINIATURE RELAYS 24V 80A
17	N030031	小平垫 5X10X1 镀锌	7	WASHER 5X10X1 ZINC
18	N010079	外六角 M5x40 不锈钢	2	SCREW M5X40 A2
19	W020415	控制器组件-Curtis-TS1300PRO	1	CONTROLLER ASSEMBLY CURTIS TS1300PRO
20	N010338	十字圆头组合螺丝 M4x10 不锈钢	4	ROND HEAD SCREW M4×10 A2
21	N040001	弹垫 6 镀锌	10	LOCK WASHER M6 ZINC
22	E050005	保险 22x80 80A	1	FUSE 80A
23	C020040	电控板外罩	1	COVER
24	N010062	外六角 M5x20 镀锌	2	SCREW M5X20 ZINC
25	E050018	保险 30A	3	FUSE 30A
26	E050081	保险 10A	1	FUSE10A

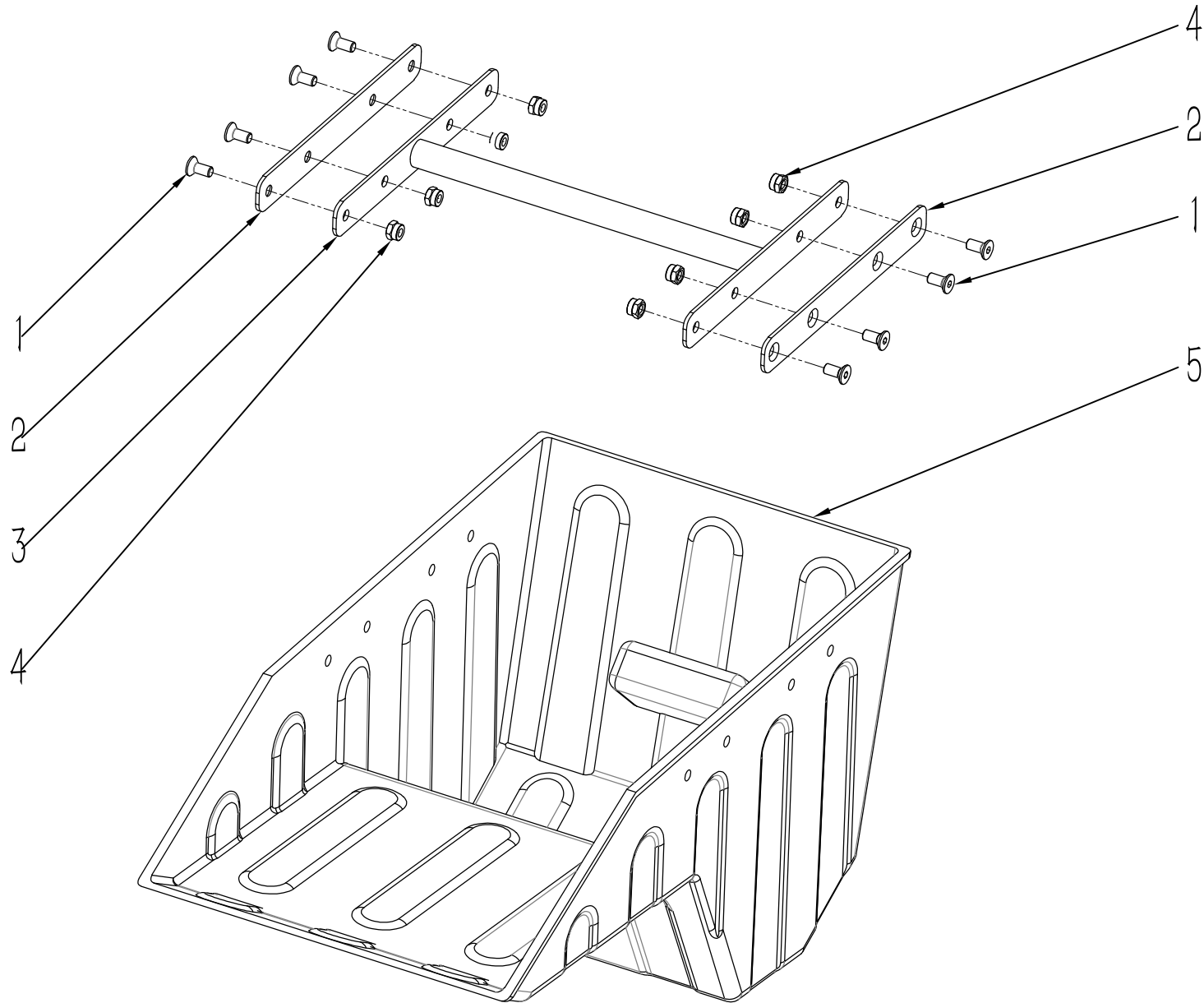


项目号 ITEM	零件号 P/N	名称	数量 QTY	DESCRIPTION
1	N020001	自锁螺母-M8-镀锌	2	LOCK NUT M8 ZINC
2	A010170	垃圾箱	1	REFUSE BIN
3	N030027	平垫-8x24x2-镀锌	4	WASHER 8X24X2 ZINC
4	B020027	防撞轮铜套 8x10x31	2	BUSHING 8×10×31
5	N110019	防撞轮 Φ100x29.5	2	WHEEL Φ100X29.5
6	N010010	外六角-M8x50-镀锌	2	SCREW M8X50 ZINC
7	N020006	自锁螺母 M6 不锈钢	4	LOCK NUT M6 A2
8	N090036	垃圾箱搭扣	1	LEVER LOCK
9	N010105	圆头十字 M6×16 不锈钢	4	SCREW M6X16 A2
10	N090033	前密封条	2.1	FRONT SEALING STRIP



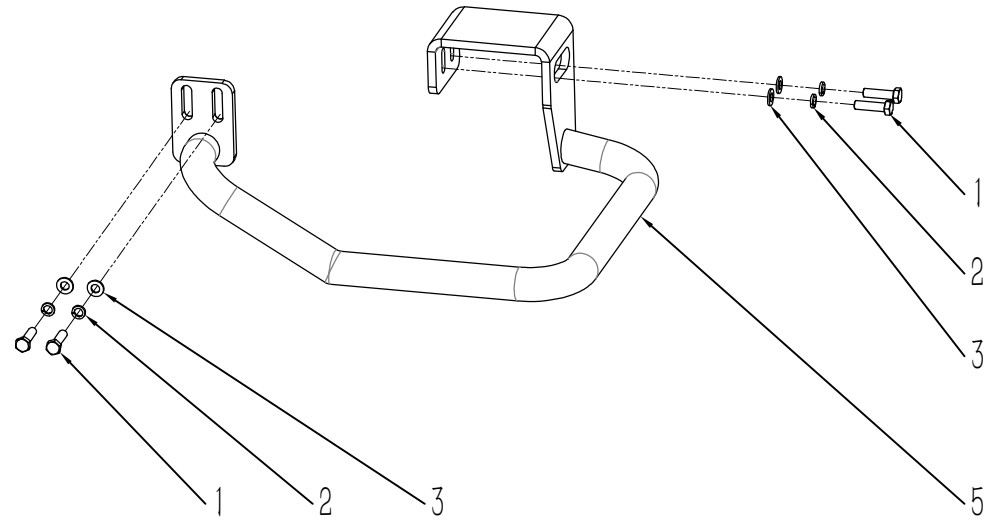
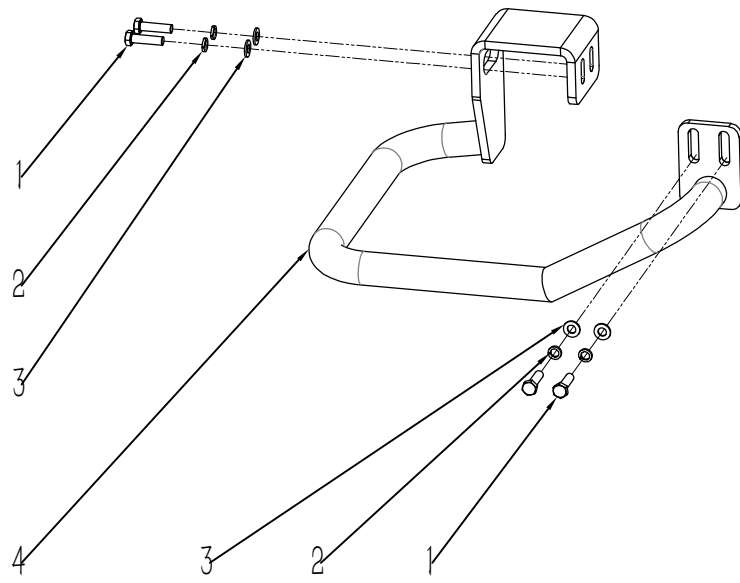
项目号 ITEM	零件号 P/N	名称	数量 QTY	DESCRIPTION
1	C040367	TVX 前标 灰底银拉丝	1	DECAL TS1300 TVX
2	C040368	扫地车 TS1300 左标贴	1	SWEEPER TS1300 LEFT MARK
3	C040369	扫地车 TS1300 右标贴	1	SWEEPER TS1300 RIGHT MARK
5	M010014	说明书自封袋 340x240mm	2	MANUAL, SELF-SEALING BAG340X240MM
7	M010019	纸箱上盖 TS1300 1490×1140×100	1	COVER THE CARTON TS1300 1490×1140×100
8	M010021	塑料包装袋 1470x1060x1300	1	PLASTIC BAGS 1470X1060X1300
9	M020007	支撑护角 50x50x100	20	SUPPORT ANGLE 50X50X100
10	M020008	三角挡块 50x50x100	7	TRIANGULAR BLOCK 50X50X100
11	M020019	木托盘 TS1300 1470x1100x120	1	WOODEN TRAY TS1300 1470X1100X120





OPTION (TS1300)

项目号 ITEM	零件号 P/N	数量 QTY	名称	DESCRIPTION
1	N010019	16	沉头内六角-M8x18-镀锌	SCREW M8×18 ZINC
2	A180015	4	内衬外锁板 TS1300	OUTER RETAINING PLATE TS1300
3	A270003	2	内衬把手 TS1300	INSIDE HANDELE TS1300
4	N020001	16	自锁螺母-M8-镀锌	LOCK NUT M8 =ZINC
5	C010210	2	垃圾箱内衬 TS1300	DUSTBIN LINING TS1300
1	FZ03060025	1	垃圾箱内衬 TS1300	KIT HOOPER INSERT



全包围保险杠组件 (TS1300)

项目号 ITEM	零件号 P/N	数量 QTY	名称	DESCRIPTION
1	N010002	8	外六角-M8x30-镀锌	SCREW M8x30 ZINC
2	N040013	8	弹垫-M8-镀锌	LOCK WASHER M8
3	N030006	8	平垫-8x16x1.6-镀锌	WASHER 8*16*1.6 ZINC
4	A150012	1	分体式保护杠-右-TS1300	SPLIT BUMPER-RIGHT-TS1300
5	A150011	1	分体式保护杠-左-TS1300	SPLIT BUMPER-LEFT-TS1300
-	FZ03060023	1	-	KIT BUMPER TS1300